

## 16MM MINIATURE PANEL SEALED METAL

The 57M is a miniature switch designed for rugged environments. The housing is zinc alloy with velour chrome plating. It is available as maintained or momentary action, Electro-mechanical operation with Gold plated contacts and solder terminals. It is ideal for a multitude of applications.

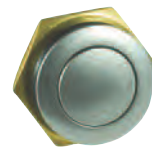
### APPLICATIONS

- Security Equipment
- Industrial Control
- Medical Equipment
- Military Equipment
- Food Processing
- Transportation
- Computers

### KEY FEATURES:

- Zinc Alloy/Velour Chrome Plated
- Center Spot LED and Non-Lighted Versions
- Maintained or Momentary Action
- Panel Sealed to IP67
- RoHS Compliant
- Electro-Mechanical
- Gold Plated Contacts and Terminals

## Series 57M-EM



ACTUAL SIZE

### ORDERING INFORMATION:

SWITCH FUNCTION:	HOUSING MATERIAL:	ILLUMINATION †:	LED COLOR:	VOLTAGE RESISTOR
1. MECHANICAL, MOMENTARY, SOLDER TERMINAL	1. ZINC ALLOY, VELOUR CHROME PLATED	0. NON-LIT	N. NONE	IF BLANK *
2. MECHANICAL, MAINTAINED, SOLDER TERMINAL		1. CENTER SPOT ILLUMINATION	G. GREEN L.E.D.	05 5V FORWARD
5. MECHANICAL, MOMENTARY, PC TERMINAL	2. ZINC ALLOY, MIRROR BLACK	2. RING ILLUMINATION	R. RED L.E.D.	12 12V FORWARD **
6. MECHANICAL, MAINTAINED, PC TERMINAL		3. STANBY LOGO ILLUMINATION	A. AMBER L.E.D.	24 24V FORWARD **
A. MECHANICAL, MOMENTARY, WIRE LEADS			B. BLUE L.E.D.	
B. MECHANICAL, MAINTAINED, WIRE LEADS			W. WHITE L.E.D.	
9. SPECIAL, DIGITS ARE IN SERIAL ORDER			RB. RED/BLUE L.E.D.	
			RG. RED/GREEN L.E.D.	

† Lighted switches come with wires on LEDs to protect from solder heat.

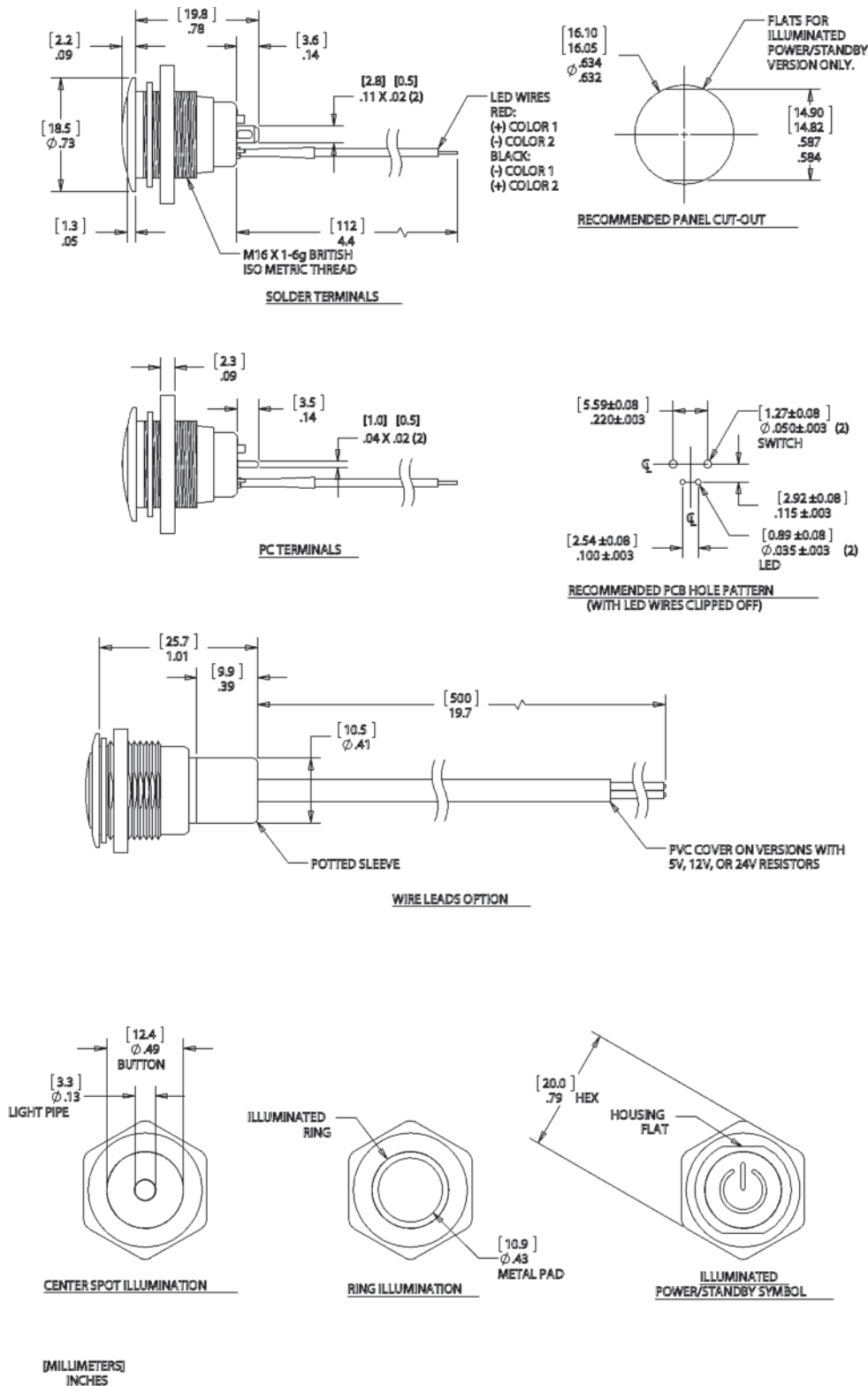
\* Current limiting resistor is required to limit LED forward current to 20 mA (not included).

\*\* 12 and 24 V resistors are available with wirelead versions only.

### STANDARDS / AGENCY / RATINGS:



## PRODUCT DRAWINGS



## MECHANICAL CHARACTERISTICS

### CIRCUIT:

SPST-NO-DB (FORM X)

### BUTTON TRAVEL (NOM):

[2.3] .09

### OPERATING FORCE (NOM):

[3N] 306g

### CONTACT BOUNCE (NOM):

1 ms

### PANEL THICKNESS:

[0.0 to 6.0] .00 to .24

### NUT TORQUE (MAX):

[11.5 kgf/cm] 10 lb/in

## HARDWARE:

BULK PACKAGED SEALING WASHER AND HEX NUT ARE INCLUDED.

## ENVIRONMENTAL SPECIFICATIONS

### ACTUATOR INGRESS

#### PROTECTION:

IP67

### OPERATING TEMPERATURE:

NON-LIT: [-40 C to +85 C]

-40 F to +185 F

ILLUMINATED: [-25 C to +85 C]

-13 F to +185 F

## ELECTRICAL SPECIFICATIONS

### CURRENT RATING (resistive):

250mA @ 12VDC, 100K CYCLES

150mA @ 28VDC, 150K CYCLES  
(MOMENTARY)

100mA @ 48VDC, 100K CYCLES

10mA @ 12VDC, 1 MILLION CYCLES  
(MOMENTARY)

### DIELECTRIC STRENGTH:

1,000 VAC

### INSULATION RESISTANCE:

1G OHM

### CONTACT RESISTANCE:

50m OHMS

### WIRE LEADS:

UL STYLE 1007

26 AWG, STRANDED

# Mouser Electronics

Authorized Distributor

Click to View Pricing, Inventory, Delivery & Lifecycle Information:

## ITW Switches:

[57M110N](#) [57M210N](#) [57M111A](#) [57M111R](#) [57M111B](#) [57M111G](#) [57M111W](#) [57M211W](#) [57M211G](#) [57M211A](#)  
[57M211B](#) [57M211R](#)