

# EMC Components

## ZAP-01 Series

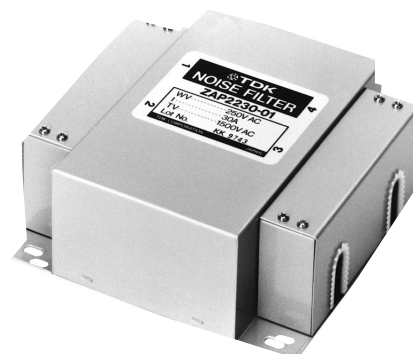
### EMC Filters for AC Power Supply Cased (Mid-Size)

#### FEATURES

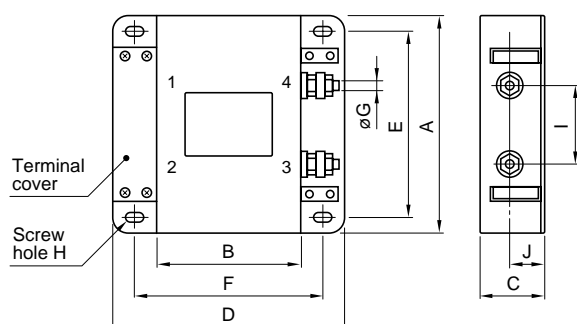
- Superior performance and reliability. Remarkable attenuation is demonstrated with respect to both the differential mode and common-mode noise components.
- High current applications possible due to an SF coil equipped with a high magnetic flux dust core.
- Current leakage is maintained at less than 1mA.

#### APPLICATIONS

General control equipment, numerically controlled devices, computers and other industrial equipment.



#### SHAPES AND DIMENSIONS



Dimensions in mm

Part No.	A	B	C	D	E	F	øG	H	I	J
ZAP2210-01	90	120	40	170	78	145	M4	4	30	20
ZAP2220-01	150	100	40	160	132	132	M4	5	40	20
ZAP2230-01	150	100	60	160	132	132	M6	5	60	26

- Case: metal, terminal:stud type, terminal cover:metal

#### ELECTRICAL CHARACTERISTICS

Part No.	ZAP2210-01	ZAP2220-01	ZAP2230-01
Rated voltage Eac(V)	250	250	250
Rated current(A)	10	20	30
Test voltage Eac(V)[Between terminal and case]	1500	1500	1500
Insulation resistance(MΩ) [DC, 500V, 1min/between terminal and case]	100min.	100min.	100min.
Leakage current(mA)[250V • 60Hz]	1max.	1max.	1max.
DC resistance(mΩ)	50max.	40max.	20max.
Operating temperature range(°C)[Including self-temperature rise]	−10 to +85	−10 to +85	−10 to +85
With derating over(°C)	55	55	55
Temperature rise(°C)	30max.	30max.	30max.
Attenuation frequency range (MHz)[+5 to +35°C]	Differential mode at 40dB Common-mode at 35dB	0.5 to 30 1.5 to 20	0.5 to 30 1.5 to 20
Weight(kg)	0.95	1.2	1.75

# EMC Components

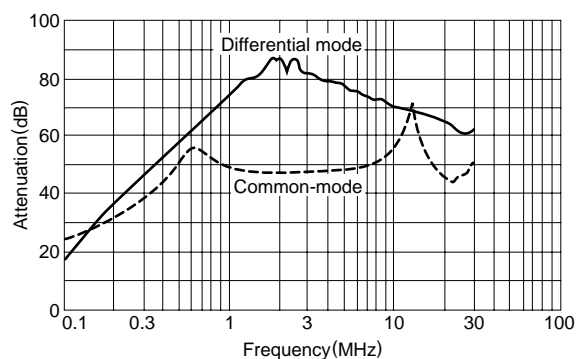
## EMC Filters for AC Power Supply Cased (Mid-Size)

## ZAP-01 Series

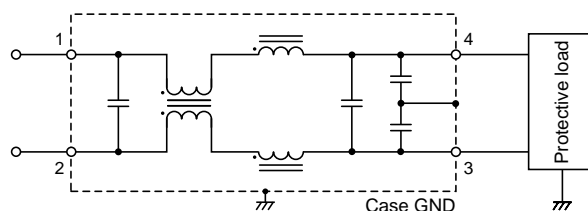
### TYPICAL ELECTRICAL CHARACTERISTICS

#### ATTENUATION vs. FREQUENCY CHARACTERISTICS

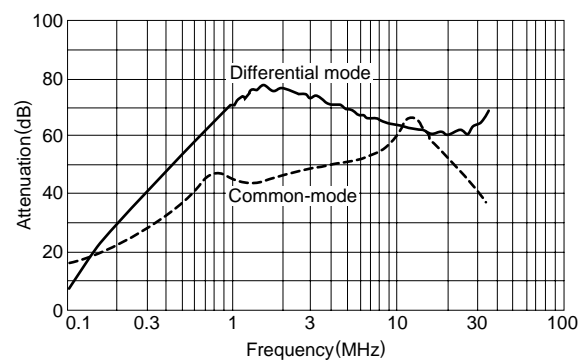
##### ZAP2210-01



#### CIRCUIT DIAGRAM



##### ZAP2220-01



##### ZAP2230-01

