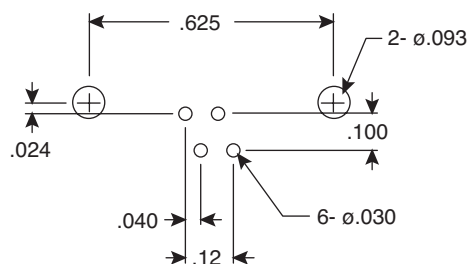
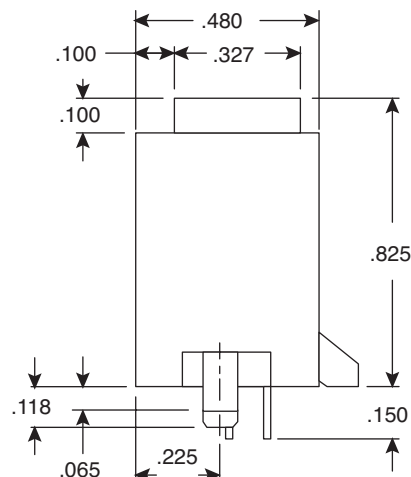
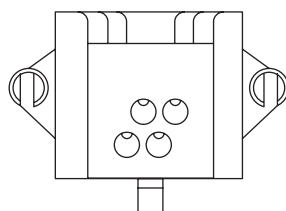
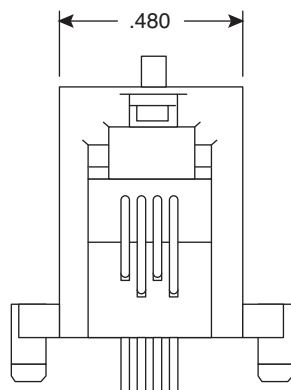
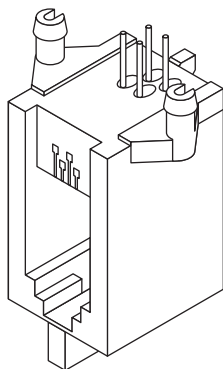


# Modular Jack with PCB Leads

154-7616PCB

KOBI CONN

Modular Jack with PCB Leads



Dimensions: In.

PCB Layout

## ELECTRICAL SPECIFICATIONS

<b>Current Rating:</b>	1.5A max.
<b>Voltage Rating:</b>	150VAC max.
<b>Dielectric Strength:</b>	1000VAC, RMS, 60Hz, for 1 Minute
<b>Contact Resistance:</b>	20mΩ max., Initial
<b>Insulation Resistance:</b>	500MΩ min.

## MATERIALS

<b>Color:</b>	Gray
<b>Contact:</b>	.45mm (.018") Dia., Phosphor Bronze
<b>Plating:</b>	Gold Plating over Nickel
<b>Housing:</b>	Glass Filled Polyester
<b>Finish:</b>	.15μ m/.6μ inch Minimum Gold Over Nickel 1.0um/40u inch min.

## MECHANICAL SPECIFICATIONS

<b>Operating Temperature:</b>	-40°C ~ +80°C
<b>Insertion Force:</b>	500gms for 4 Contacts
<b>Retention Strength:</b>	7.7kgs Between Jack and Plug
<b>H2S Gas:</b>	25°C - 86hrs.
<b>Durability:</b>	500 Cycles Meets Contact Resistance Test Check Every 100 Cycles. Mating and Unmating Cycles @ 20 Cycles/Minute.

Date Last Revised: 10-19-05

Available from Mouser Electronics  
1-800-346-6873  
www.mouser.com

KC-300607

154-7616PCB

# Mouser Electronics

Authorized Distributor

Click to View Pricing, Inventory, Delivery & Lifecycle Information:

[Kobiconn:](#)

[154-7616PCB](#)