



# SAW Components

Data Sheet B3662

Data Sheet

A large, stylized, 3D graphic of the EPCOS logo. The letters "EPCOS" are rendered in a bold, sans-serif font, appearing to be part of a larger, curved structure that resembles a stylized globe or a series of overlapping planes. The graphic is in grayscale and has a metallic, reflective appearance.



**333,0 MHz**

## Data Sheet

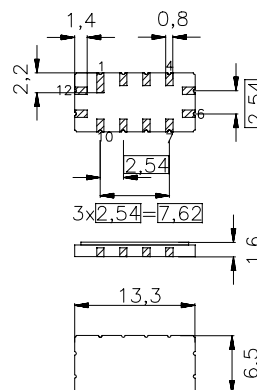
## Features

- IF filter for WLL
- Ceramic SMD package
- Low insertion attenuation

Ceramic package **QCC12**

## Terminals

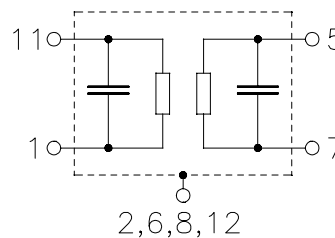
- Gold plated



Dimens. in mm, approx. weight 0,4 g

## Pin configuration

11	Input
5	Output
1	Input ground
7	Output ground
3, 4, 9, 10	Ground
2, 6, 8, 12	Case ground



Type	Ordering code	Marking and Package according to	Packing according to
B3662	B39331-B3662-Z510	C61157-A7-A55	F61074-V8026-Z000

### Electrostatic Sensitive Device (ESD)

### Maximum ratings

Operable temperature range	$T_A$	-40 / +85	°C	
Storage temperature range	$T_{\text{stg}}$	-45 / +85	°C	
DC voltage	$V_{\text{DC}}$	0	V	
Source power	$P_s$	10	dBm	



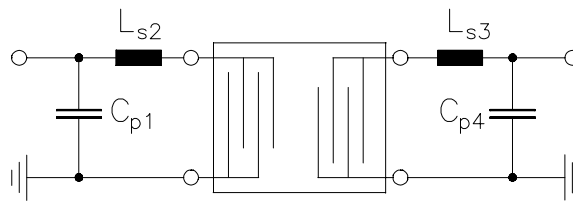
SAW Components	B3662
Low-Loss Filter	333,0 MHz

## Data Sheet

### Characteristics

Operating temperature:	$T_A = -45 \dots +85 \text{ }^{\circ}\text{C}$
Terminating source impedance:	$Z_S = 50 \text{ } \Omega$ and matching network
Terminating load impedance:	$Z_L = 50 \text{ } \Omega$ and matching network

		min.	typ.	max.	
<b>Center frequency</b>	$f_C$	332,88	333,04	333,12	MHz
<b>Minimum insertion attenuation</b>	$\alpha_{\min}$	—	7,5	9,0	dB
<b>Passband width</b>					
$\alpha_{\text{rel}} \leq 3,0 \text{ dB}$	$B_{3,0\text{dB}}$	0,62	0,66	—	MHz
$\alpha_{\text{rel}} \leq 20,0 \text{ dB}$	$B_{20\text{dB}}$	—	1,42	1,5	MHz
$\alpha_{\text{rel}} \leq 30,0 \text{ dB}$	$B_{30\text{dB}}$	—	1,65	1,7	MHz
$\alpha_{\text{rel}} \leq 40,0 \text{ dB}$	$B_{40\text{dB}}$	—	1,83	1,9	MHz
$\alpha_{\text{rel}} \leq 50,0 \text{ dB}$	$B_{50\text{dB}}$	—	5,0	6,0	MHz
<b>Group delay ripple (p-p)</b>	$\Delta\tau$				
332,72 ... 333,25 MHz		—	400	500	ns
332,69 ... 333,31 MHz		—	400	650	ns
<b>Triple Transit Suppression</b>		30	31	—	dB

**SAW Components****B3662****Low-Loss Filter****333,0 MHz****Data Sheet****Matching network** (element values may depend on pcb layout)

$$C_{p1} = 15 \text{ pF}$$

$$L_{s2} = 18 \text{ nH}$$

$$L_{s3} = 12 \text{ nH}$$

$$C_{p4} = 18 \text{ pF}$$



SAW Components

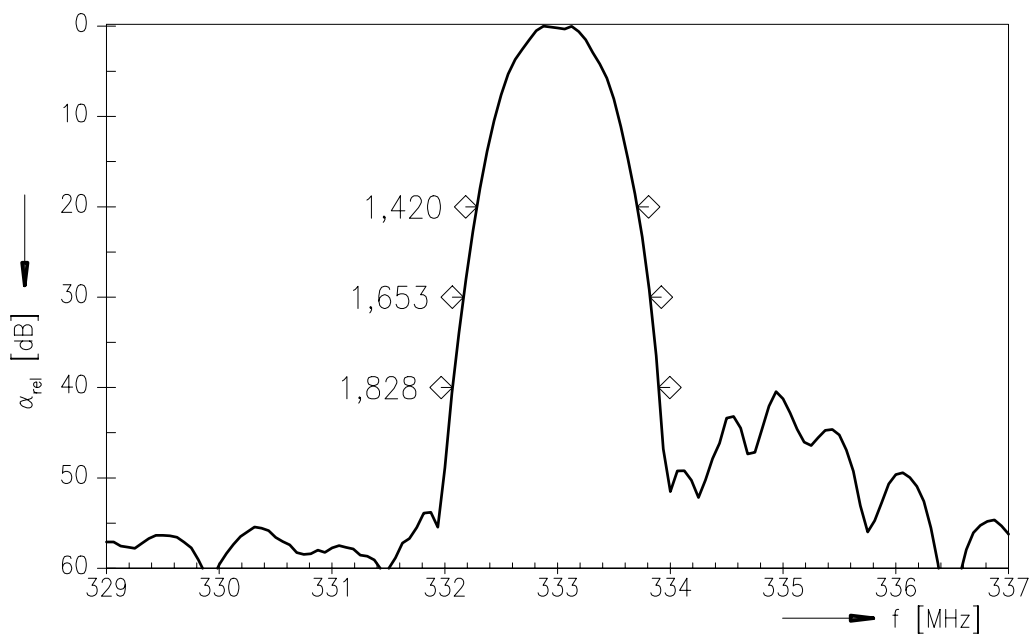
B3662

Low-Loss Filter

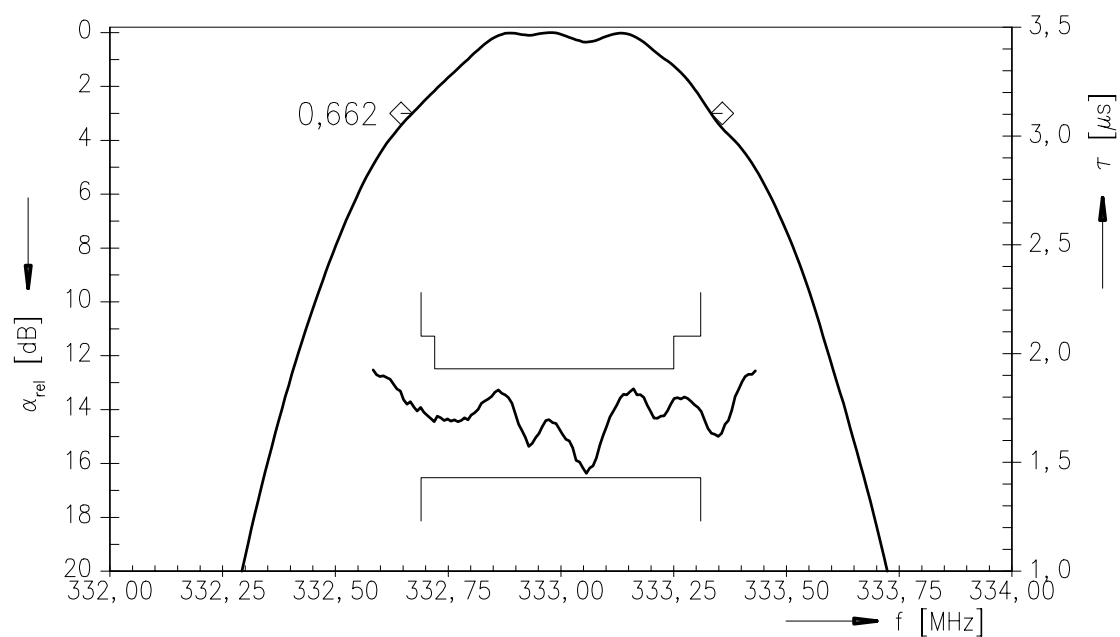
333,0 MHz

Data Sheet

Transfer function:



Transfer function (pass band):





<b>SAW Components</b>	<b>B3662</b>
<b>Low-Loss Filter</b>	<b>333,0 MHz</b>

## Data Sheet

**Published by EPCOS AG**  
**Surface Acoustic Wave Components Division, OFW E NK**  
**P.O. Box 80 17 09, D-81617 München**

© EPCOS AG 1999. All Rights Reserved.

As far as patents or other rights of third parties are concerned, liability is only assumed for components per se, not for applications, processes and circuits implemented within components or assemblies.

The information describes the type of component and shall not be considered as assured characteristics.

Terms of delivery and rights to change design reserved.

For questions on technology, prices and delivery please contact the sales offices of EPCOS AG or the international representatives.

Due to technical requirements components may contain dangerous substances. For information on the type in question please also contact one of our sales offices.