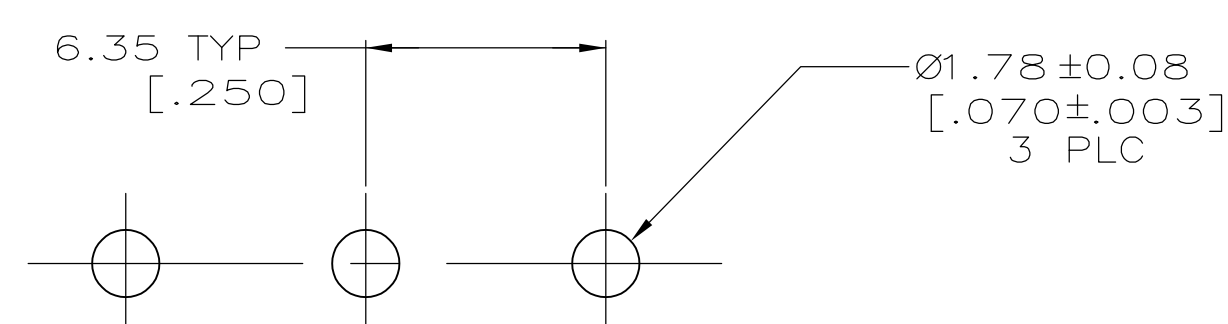
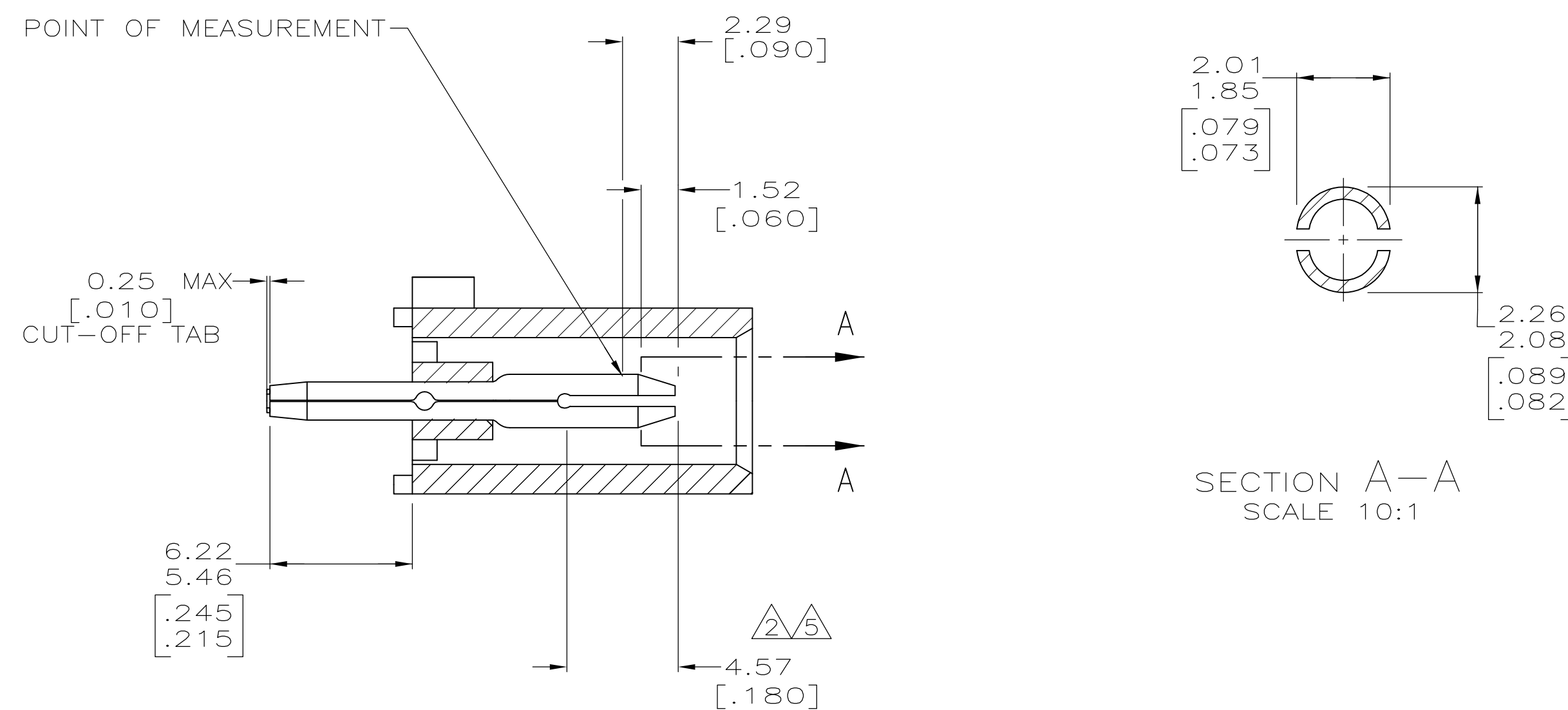
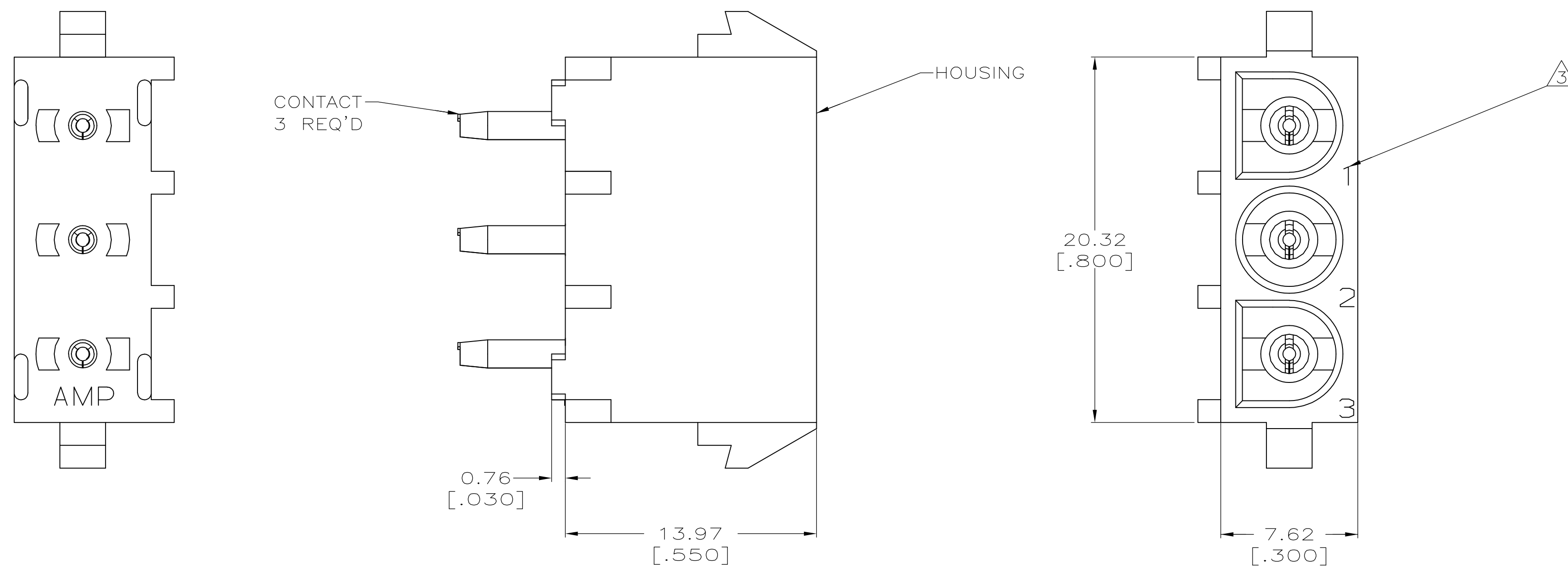
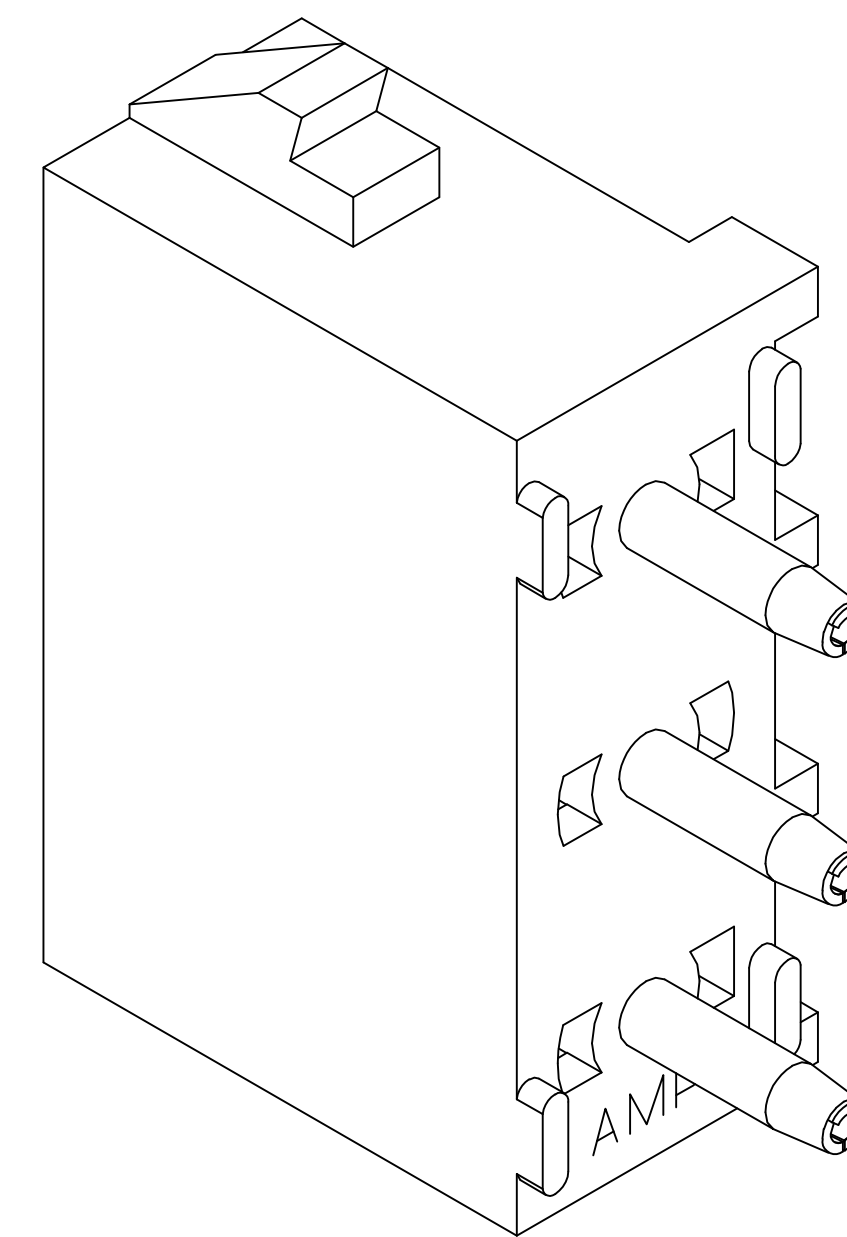


LOC	DIST	REVISIONS					
CM	00	P	LTR	DESCRIPTION	DATE	DWN	APVD
			S1	REVISED PER ECR-12-011660	25JAN13	KH	TM


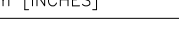


RECOMMENDED MOUNTING HOLE PATTERN
FOR 3.18 [.125] THICK P.C. BOARD

- | | |
|---|---|
| 1 | PARTS COMPLY TO AMP SOLDERABILITY SPECIFICATION 109-11-3. |
| 2 | CONTACT IS PLATED OVERALL WITH 0.00127 [.000050] NICKEL, THEN 0.00076 [.000030] GOLD OVER CONTACT LENGTH INDICATED AND MATTE TIN LEAD ON SOLDER TAIL END. |
| 3 | CIRCUIT IDENTIFICATION CHARACTERS ARE ADJACENT TO THE INDICATED CAVITIES, BUT LOCATION AND ORIENTATION MAY DIFFER FROM PRINT. |
| 4 | DIMENSIONS IN BRACKETS ARE IN INCHES. |
| 5 | CONTACT IS PLATED OVERALL WITH 0.00127 [.000050] NICKEL, THEN 0.00076 [.000030] GOLD OVER CONTACT LENGTH INDICATED AND MATTE TIN ON SOLDER TAIL END. |
| 6 | SUPERSEDED BY 350790-3 |



6	PHOSPHOR BRONZE, GOLD	5	NYLON,UL94V-0,WHITE	350790-3
	PHOSPHOR BRONZE, GOLD	2	NYLON,UL94V-0,WHITE	350790-2
	PHOSPHOR BRONZE, PRE-TIN		NYLON,UL94V-0,WHITE	350790-1
	PIN CONTACT MATERIAL AND FINISH		HOUSING MATERIAL	PART NUMBER

THIS DRAWING IS A CONTROLLED DOCUMENT.		DIN 8-19-98 B. LEWIS CHK 8-19-98 R. SWING APP'D 8-19-98 M. TRULL		 TE Connectivity	
DIMENSIONS: mm [INCHES]		TOLERANCES UNLESS OTHERWISE SPECIFIED: 0 PLC ± - 1 PLC ± - 2 PLC ± ± 0.13 [0.05] 4 PLC ± - ANGLES ± ± 0°30'		NAME PIN HEADER ASSEMBLY, 3 CIRCUIT UNIVERSAL MATE-N-LOK™	
		PRODUCT SPEC — APPLICATION SPEC —		SIZE A1	
MATERIAL SEE TABLE		FINISH SEE TABLE		CAGE CODE 00779	
		WEIGHT —		DRAWING NO C-350790	
		CUSTOMER DRAWING		SCALE 5:1	
				SHEET 1 OF 1	
				REV S	