

# SPECIFICATION FOR APPROVAL

客 戶

CUSTOMER:

客 戶 料 號

CUSTOMER PARTS NO.:

品 名

AC AXIAL FAN

DESCRIPTION:

機種

4E-115B-25W

MODEL NO.:

檔案序號

A4E0011FB-B1

FILE NO.:

核示 ISSUE	研發 R&D	品保 QA	版數 REVISION

客 戶 承 認

CUSTOMER APPROVAL

BI-SONIC TECHNOLOGY CO., LTD

HEADQUARTER: 2F, NO. 137, LANE 235, PAO CHAIO RD.,

HSIN-TIEN CITY, TAIPEI HSIEN, 231, TAIWAN , R.O.C.

TEL:(02)89192168 FAX:(02)89192169

# PERFORMANCE SPECIFICATION

PRODUCT TITLE : AC AXIAL FAN

MODEL NO : 4E-115B-25W

## 1、SCOPE :

THIS SPECIFICATION DEFINES THE ELECTRICAL AND MECHANICAL CHARACTERISTICS OF THE AC AXIAL FLOW FAN. THE FAN MOTOR IS SHADED POLE MOTOR WITH EXTERNAL ROTOR.

## 2、ELECTRICAL CHARACTERISTICS :

ALL MEASUREMENTS PERFORMED AT 20~30°C ROOM TEMPERATURE & 50~70%R.H.UNLESS OTHERWISE SPECIFIED.

ITEM	DESCRIPTION	UNIT	SYMBOL	SPEC.		CONDITION
				50Hz	60Hz	
1	RATED VOLTAGE	VOLTS	V	115	AC	
2	OPERATION VOLTAGE	VOLTS	V	105~125	AC	
3	INPUT CURRENT	AMP	A	0.24MAX	0.23MAX	AT RATED VOLTAGE
4	INPUT POWER	WATTS	W	23MAX	21MAX	AT RATED VOLTAGE
5	ROTATION SPEED	RPM	RPM	2250± 10%	2500± 10%	AT RATED VOLTAGE FREE AIR
6	ACOUSTICAL NOISE (AVG)	dB(A)	dB(A)	38± 10%	42± 10%	DETAILS SEE ATTACHED PAGE.
7	MAX. AIR-FLOW	CFM	Q	70± 10%	78± 10%	TWO-CHAMBER METHODS DETAILS SEE ATTACHED PAGE.
8	MAX. AIR-PRESSURE	mmH <sub>2</sub> O	P	6.54± 10%	7.26± 10%	TWO-CHAMBER METHODS DETAILS SEE ATTACHED PAGE.
9	INSULATION RESISTANCE	MEG. OHM	MΩ	100MΩ MIN. AT 500V DC		BETWEEN FRAME AND LEAD WIRE
10	DIELECTRIC STRENGTH			WITHSTANDING AT 1400V AC 60Hz. FOR 1 MINUTE		BETWEEN FRAME AND LEAD WIRE

**BI-SONIC TECHNOLOGY  
CO., LTD.**

FILE NO :

A4E0011FB-B1

REVISIONS :

ITEM	DESCRIPTION	SPEC.	
11	ROTATION	CW VIEW FROM NAME PLATE SIDE	
12	AIR-FLOW DIRECTION	AIR INTAKE OVER THE STRUTS	
13	INSULATION CLASS	CLASS B	
14	LIFE EXPECTANCY	50000 HOURS CONTINUOUS	<input type="checkbox"/>
15	SAFETY APPROVAL	UL. CSA. TUV. CE. IP54.	

☐ LIFE IS DEFINED AS THE TIME MOTOR SPEED DECREASED MORE THAN 30% COMPARED WITH INITIAL VALUE.

### 3、MECHANICAL

- 3-1. DIMENSIONS----- SEE SECTION 8
- 3-2. FRAME----- METAL CONSTRUCTION WITH ALUMINUM DIE-CASTING.
- 3-3. IMPELLER----- MADE OF METAL MATERIAL SPOT WELDING ON ROTOR SHELL.
- 3-4. COATING-----CED ( CATHONIC ELECTRODEPOSITION COATING WITH EPOXY) COATING ON METAL SURFACE BE CAPABLE OF IMPACT RESISTANT AND ABRASION RESISTANT.
- 3-5. BEARING SYSTEM----- BALL BEARING
- 3-6. WEIGHT----- 600 GRAMS
- 3-7. LEAD WIRE----- 1007 AWG # 22
- 3-8. TYPE OF OUTPUT : LEADWIRE
- 3-9. PLASTIC PARTS-----UNFLAMABLE MATERIAL , MEET UL 94V-0 RATING.

### 4、ENVIRONMENTAL :

- 4-1. OPERATING TEMPERATURE----- -10 TO +70℃
- 4-2. STORAGE TEMPERATURE----- -30 TO +75℃

**BI-SONIC TECHNOLOGY  
CO., LTD**

FILE NO :

A4E0011FB-B1

REVISIONS :

4-3. OPERATING HUMIDITY ----- RH 20% ~ 85%

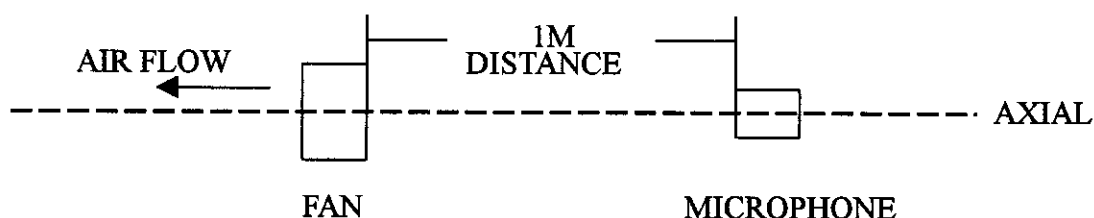
5 、 PROTECTION :

5-1. IMPEDANCE PROTECTION

IMPEDANCE OF MOTOR COIL WINDING PROTECTS MOTOR FROM  
FLAMING IN THE CONDITION OF 72 Hrs LOCKED ROTOR AT RATED  
VOLTAGE .

6 、 ACOUSTICAL NOISE :

6-1. MEASUREMENT SET-UP



6-2. MEASUREMENT PERFORMED IN ANECHOIC TEST CHAMBER  
UNDER FREE AIR CONDITION .

6-3. CHAMBER BACKGROUND NOISE 17dB MAX .

6-4. READING TAKEN FROM SPECTRUM ANALYZER .

6-5. NOISE DISTRIBUTION CURVE SEE ATTACHED PAGE .

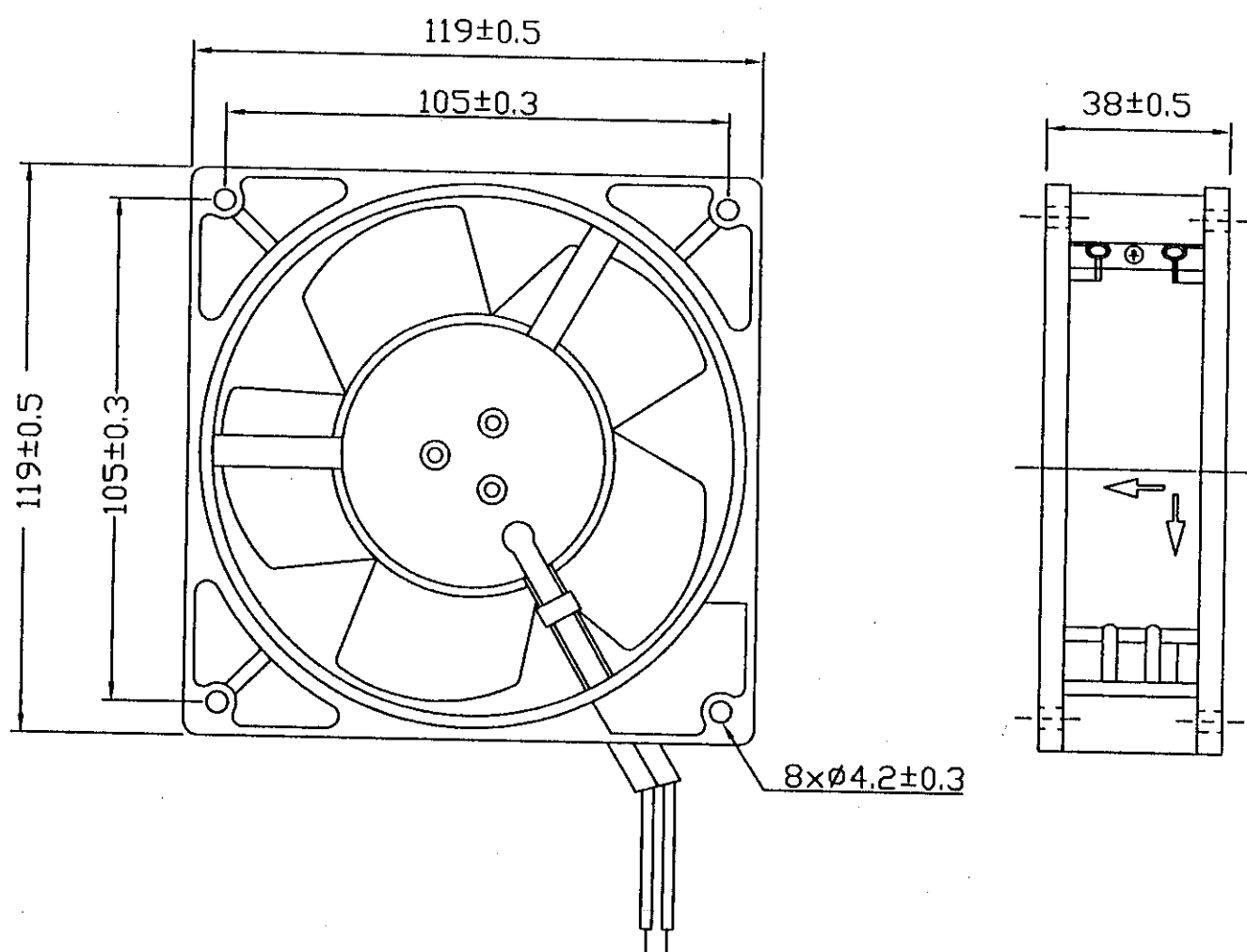
7 、 STATICS PRESSURE VS AIR FLOW CURVE :

MEASURED PER TWO CHAMBER METHOD .

DATA-CURVE SEE ATTACHED PAGE .

8、DIMENSIONS DRAWING：

UNIT:mm



BI-SONIC TECHNOLOGY  
CO., LTD.

FILE NO：

A4E0011FB-B1

REVISIONS：

# BI-SONIC TECHNOLOGY CORP NOISE TEST REPORT

測試機種: \_\_\_\_\_

測試目的: ☐ Evaluation 評估

工 令: \_\_\_\_\_

☐ LPQC

取 樣: \_\_\_\_\_ pcs

☐ QA

AC  
60Hz

資料代碼:

測試頻率:

10KHz

測試感度:

8dB

觸發感度:

0/128

觸發位置:

100點

Y軸上限:

40.00

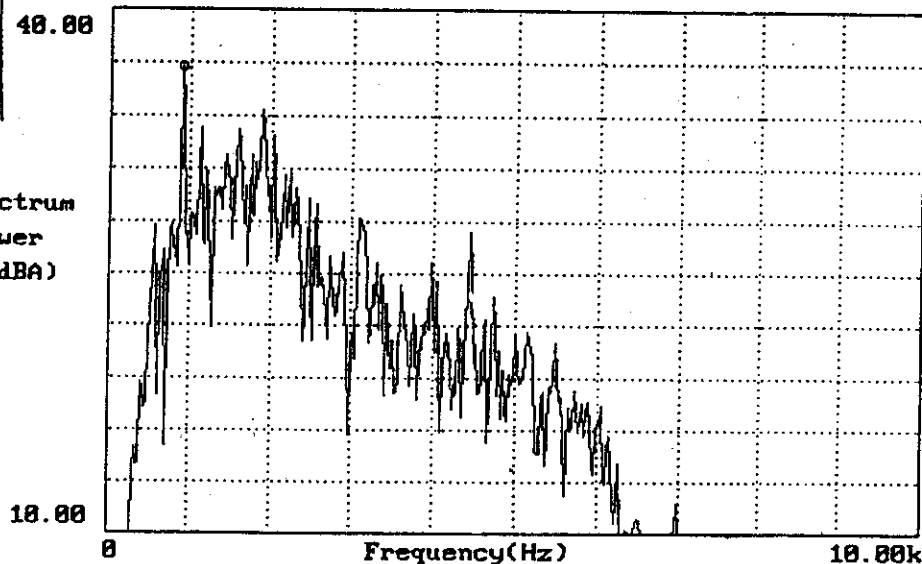
Y軸下限:

10.00

平均次數:

3次

Spectrum  
Power  
(dBA)



OU.AL	——	41.90222dB	MAXIM	899.99Hz	36.71882dB
LEFT	5.000kHz	21.38184dB	MINIM	0.0000Hz	-289.418dB

結果分析: \_\_\_\_\_

(1) Background Noise : 17dBA

(2) FFT Analyzer

(3) Sound Pressure Level Meter

No. RR01.04A

Reporter: \_\_\_\_\_

Date : 2000/06/14

# Mouser Electronics

Authorized Distributor

Click to View Pricing, Inventory, Delivery & Lifecycle Information:

Bi-Sonic:

[4E-115B-25 W-G/ROHS](#)