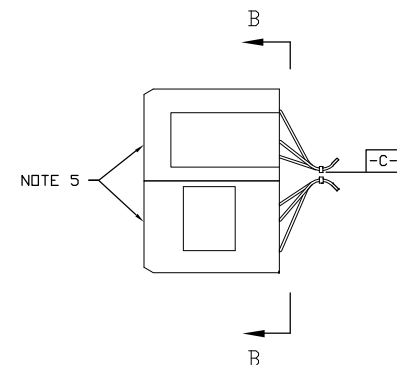
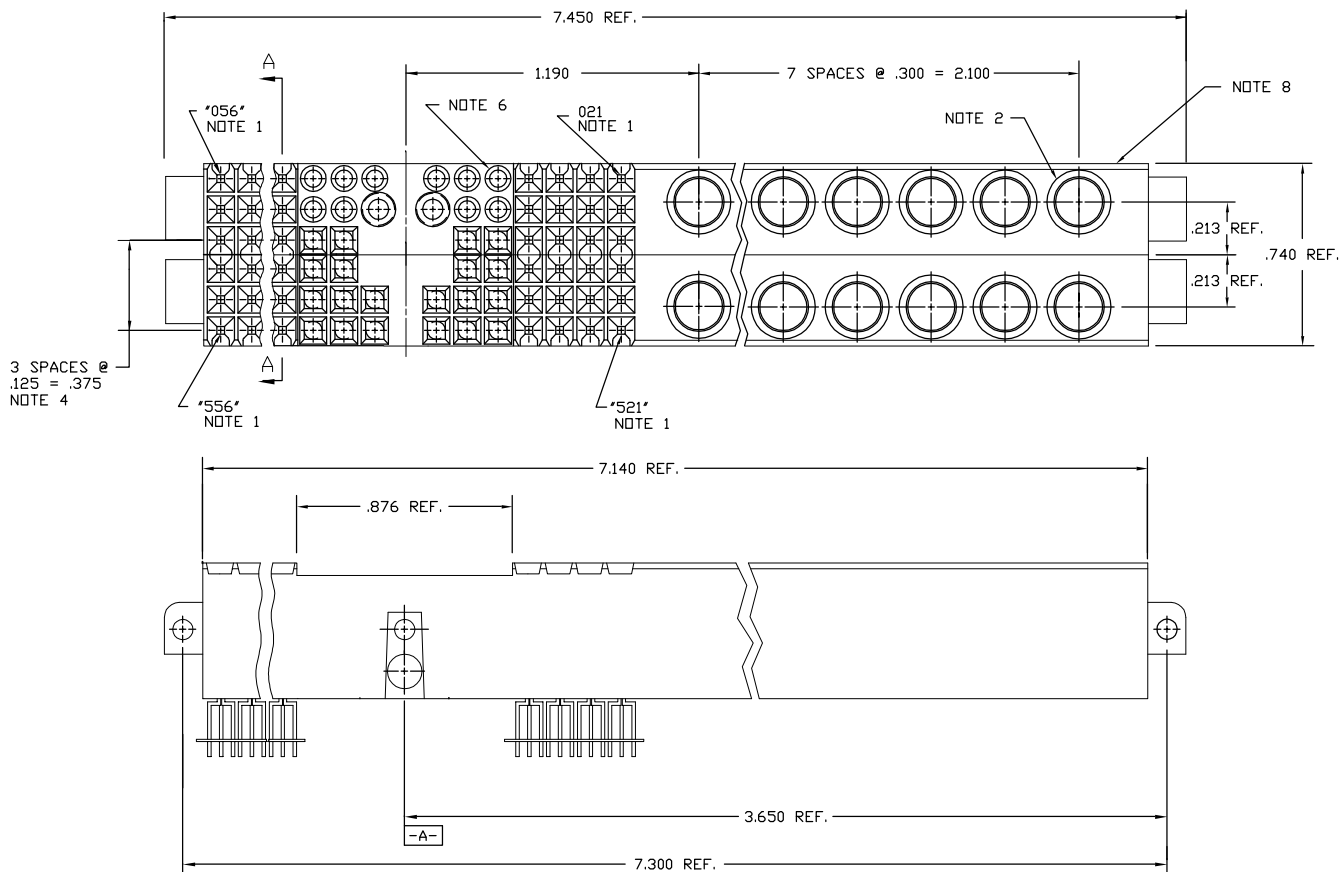


Tous droits strictement reserves. Reproduction ou communication a des tiers interdite sous quelque forme que ce soit sans autorisation ecrite du proprietaire. Propriete de c FCI. Droits de reproduction FCI.

All rights strictly reserved. Reproduction or Issue to third parties in any form whatever is not permitted without written authority from the proprietor. Property of FCI. Copyright FCI.



PRODUCT NO.
9639E



mat'l. code				tolerances unless otherwise specified				CUSTOMER COPY		<div><div>A</div><div>FCI</div><div>www.fciconnect.com</div></div>																																																																																																																																																																																																																																																																																																																																																																																																																																																																																																																																																																																																																																																																																																																																																																																																																																																																																																																																																																																																																																																																																																																																																																																																																																																																																																																																																																																																																																																																																																																																																																																				
ltr	ecn no	dr	date	linear	.XX ±.01				projection	title 9639E TYPE CONNECTOR ASSEMBLY																																																																																																																																																																																																																																																																																																																																																																																																																																																																																																																																																																																																																																																																																																																																																																																																																																																																																																																																																																																																																																																																																																																																																																																																																																																																																																																																																																																																																																																																																																																																																																																				
A	V03-0979	TAB	9/26/03		.XXX ±.003																																																																																																																																																																																																																																																																																																																																																																																																																																																																																																																																																																																																																																																																																																																																																																																																																																																																																																																																																																																																																																																																																																																																																																																																																																																																																																																																																																																																																																																																																																																																																																																									
					.XXX ±.0020																																																																																																																																																																																																																																																																																																																																																																																																																																																																																																																																																																																																																																																																																																																																																																																																																																																																																																																																																																																																																																																																																																																																																																																																																																																																																																																																																																																																																																																																																																																																																																																									
				angles	0° ±2°					product family FASTECH size dwg no A A91KC4035																																																																																																																																																																																																																																																																																																																																																																																																																																																																																																																																																																																																																																																																																																																																																																																																																																																																																																																																																																																																																																																																																																																																																																																																																																																																																																																																																																																																																																																																																																																																																																																				
				dr	T. BRUNGARD	9/26/03	INCH ←→																																																																																																																																																																																																																																																																																																																																																																																																																																																																																																																																																																																																																																																																																																																																																																																																																																																																																																																																																																																																																																																																																																																																																																																																																																																																																																																																																																																																																																																																																																																																																																																							
				engr	T. BREWBAKER	9/26/03																																																																																																																																																																																																																																																																																																																																																																																																																																																																																																																																																																																																																																																																																																																																																																																																																																																																																																																																																																																																																																																																																																																																																																																																																																																																																																																																																																																																																																																																																																																																																																																								
				chr	T. BREWBAKER	9/26/03		scale 1:1																																																																																																																																																																																																																																																																																																																																																																																																																																																																																																																																																																																																																																																																																																																																																																																																																																																																																																																																																																																																																																																																																																																																																																																																																																																																																																																																																																																																																																																																																																																																																																																						
				appd	T. BREWBAKER	9/26/03	sheet index		revision sheet		A	A																																																																																																																																																																																																																																																																																																																																																																																																																																																																																																																																																																																																																																																																																																																																																																																																																																																																																																																																																																																																																																																																																																																																																																																																																																																																																																																																																																																																																																																																																																																																																																																		

1 | 2

ACAD

PDM: Rev:A

STATUS: Released

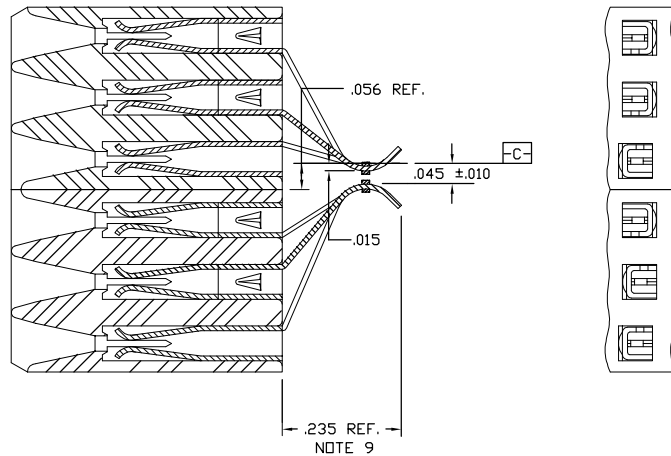
Printed: Nov 12, 2003

cage code 22526

4


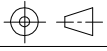
PRODUCT NO.

9639E

SECTION A-A
SCALE 4/1VIEW B-B
SCALE 4/1

NOTES:

- ①. AS VIEWED FROM THE MATING FACE OF THE CONNECTOR WITH THE ASSEMBLY SCREWS (ITEM 4D) DOWN, CONTACT AND INSULATOR CAVITY (EVEN IF NO CONTACT IS PRESENT) IS DESIGNATED BY A THREE DIGIT NUMBER. THE TOP ROW IS NUMBERED RIGHT TO LEFT, IN TWO GROUPS: 021 TO 027 AND 029 TO 056. THE SECOND ROW IS NUMBERED IN GROUPS 121 TO 126 AND 130 TO 156. SIMILARLY THE BOTTOM FOUR ROWS AND NUMBERED 221 TO 226, 230 TO 256 AND 321 TO 326, 330 TO 356 AND 421 TO 426 AND 430 TO 456, 521 TO 526, AND 530 TO 556.
- ②. AS VIEWED FROM THE MATING FACE OF THE CONNECTOR WITH THE ASSEMBLY SCREWS (ITEM 4D), COAXIAL CONTACT CAVITY IS DESIGNATED BY A TWO DIGIT NUMBER, THE TOP ROW IS NUMBERED, RIGHT TO LEFT, 01 TO 08 AND THE BOTTOM ROW IS NUMBERED 11 TO 18.
3. MOUNTING SCREWS MAY BE OBTAINED FROM CAMCAR CORP. (DIVISION OF TEXTRON).
- ④. THE INTERSECTIONS OF THE CENTERLINES OF EACH .030 SQUARE HOLE AND .110 INCH SQUARE OPENING SHALL BE WITHIN A .010 INCH DIAMETER (.005R) OF THE SPECIFIED TRUE POSITION (DIMENSIONS MARKED BASIC) WITH RESPECT TO DATUM B AT A MAXIMUM MATERIAL CONDITION. DATUM B IS THE LINE ESTABLISHED BY THE CENTERLINES OF THE OUTERMOST .030 INCH OPENINGS IN THE ROW INDICATED.
- ⑤. THE FACES OF THE TWO HALVES SHALL BE COPLANAR WITHIN .003 INCH.
- ⑥. CAVITIES 025, 026, 027, 029, 030, 031, 125, 126, 127, 129 130 AND 131 SHALL BE CORED FOR KEYING PLUGS AS SHOWN ON INSULATOR DRAWING 846765329.
7. WARP ON EACH LONGITUDINAL SURFACE OF AN ASSEMBLED CONNECTOR SHALL BE LESS THAN .003 INCH IN FREE STATE.
- ⑧. EACH COMPLETE CONNECTOR ASSEMBLY SHALL HAVE A CODE MARK ANYWHERE ON THE SURFACE SHOWN.
- ⑨. THIS DIMENSION SHALL BE MEASURED WITH CONTACT TAILS FIXED AT THE NOMINAL .015 AND .045 DIMENSIONS.

mat'l. code				tolerances unless otherwise specified		CUSTOMER COPY	 www.fciconnect.com		
ltr	ecn no	dr	date	linear	.XX ±.01		title 9639E TYPE CONNECTOR ASSEMBLY		
A					.XXX ±.003				
					.XXXX ±.0020				
				angles	0° ±2°	 INCH scale 1:1	product family FASTECH		
				dr	T. BRUNGARD 9/26/03		code 213		
				engr	T. BREWBAKER 9/26/03		size dwg no		
				chr	T. BREWBAKER 9/26/03		A A91KC4035		
				appd	T. BREWBAKER 9/26/03		sheet 2 of 2		
sheet index	revision sheet								

cage code
22526