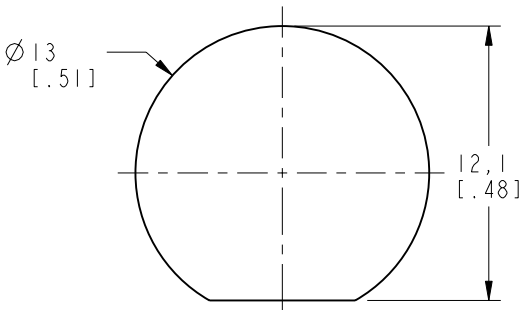
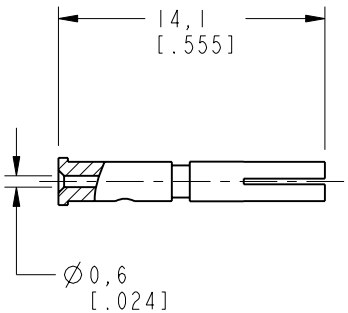
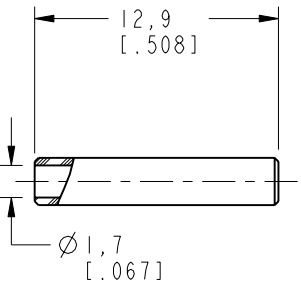
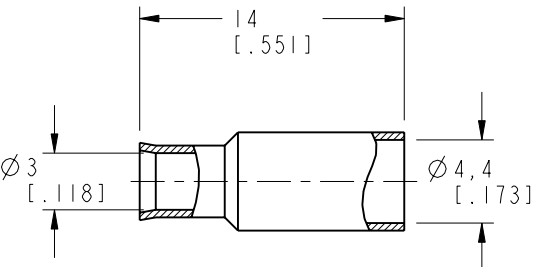


- NOTES:
- MATERIALS AND FINISHES(PLATING THICKNESS IN MICRO-INCHES):  
BODY - BRASS, NICKEL PLATING  
CONTACT - PHOSPHOR BRONZE, GOLD PLATING  
INSULATOR - DELRIN,NATURAL
  - ELECTRICAL:  
A. IMPEDANCE: 50 OHM
  - CRIMPED FERRULE: HEX CRIMP SIZE .178"
  - CRIMPED CONTACT PIN: HEX CRIMP SIZE .068"
  - MAX. PANEL THICKNESS=3.5mm



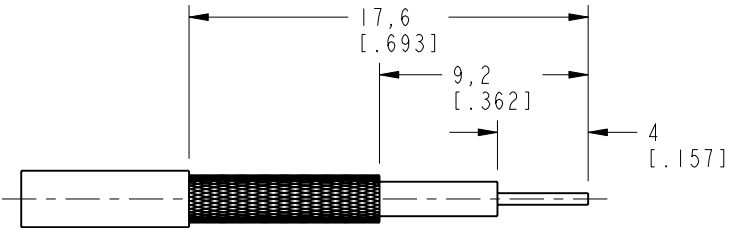
SCALE 3.000  
RECOMMENDED MOUNTING  
HOLE DIMENSIONS



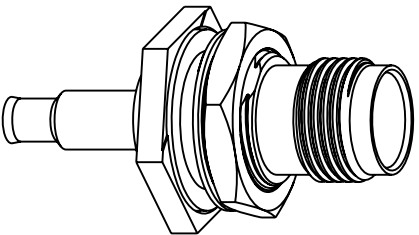
THIRD ANGLE PROJ.

REVISIONS

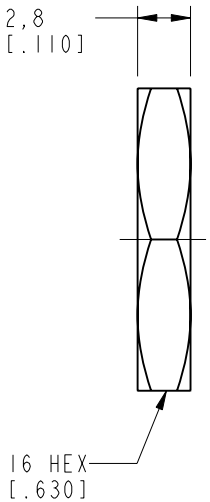
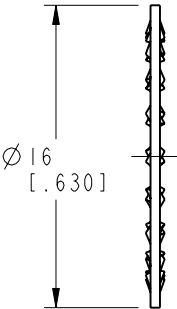
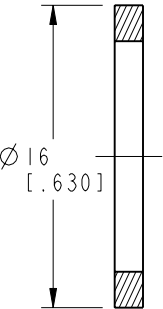
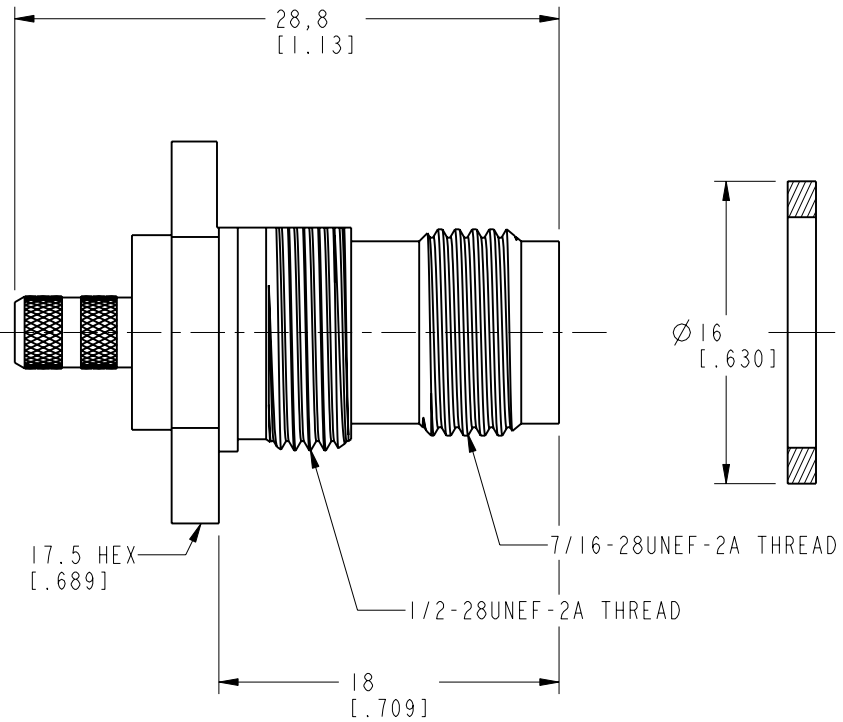
REV	DESCRIPTION	DATE	ECO	APPR
A	RELEASE TO MFG.	1/22/03	44342	CPM
C	ADDED 17.5 HEX, UPDATED SHEET	15-Jun-11	48637	RM



RECOMMENDED CABLE STRIPPING



SCALE 1.500



## CUSTOMER OUTLINE DRAWING

ALL OTHER SHEETS ARE FOR INTERNAL USE ONLY

UNLESS OTHERWISE SPECIFIED, DIMENSIONS ARE IN METRIC AND TOLERANCES ARE: <0.5mm      0.5 - 6mm      6 - 30mm      30 - 120mm      ANGLES ± 0.05mm    ±0.1mm      ±0.2mm      ± 0.3mm      ±1°	MATERIAL	DRAWN R. MAO	DATE 15-Jun-11	TITLE TNC BULKHEAD CRIMP JACK FOR RG-316/U, 188A/U, 174/U CABLE	Amphenol RF	
	-	ENGINEER O. BARTHELMES	DATE 1/6/03		www.amphenolrf.com	
	REFERENCE GEN# ASSYF23.TNC	APPROVED S. HSIEH	DATE 28-Jun-11		DRAWING NO. T6421E1-ND3G-316U-50	
	FINISH	CAD FILE			ITEM NO. 026421AAA36ND5F	
NOTICE - These drawings, specifications, or other data (1) are, and remain the property of Amphenol corp. (2) must be returned upon request; and (3) are confidential and not to be disclosed to any person other than those to whom they are given by Amphenol Corp. the furnishing of these drawings, specifications, or other data by Amphenol Corp., or to any other person to anyone for any purpose is not to be regarded by implication or otherwise in any manner licensing, granting rights to permitting such holder or any other person to manufacture, use or sell any product, process or design, patented or otherwise, that may in any way be related to or disclosed by said drawings, specifications, or other data.			SCALE: 2.5:1.0	SHEET 2 OF 2	PART NO. 31-2318-RFX	
			DWG SIZE B	REV C		