

# IOVU series PPC



**IOVU** (Input and Output Viewer) series enables the great embedded flexibility for RISC-based panel PC. Built with a XScale or Alchemy CPU, LCD display, touch screen, I/O peripherals, and pre-installed Windows® CE 5.0 or embedded Linux, the IOVU series provides the most cost-effective and stable solution for a diverse range of embedded RISC-based panel PC application. The supported software includes thin client technology, remote management tool, embedded OS SDK (software development kit) and BSP (board support package).

►► Equipped with RISC CPU and Windows® CE embedded OS, the IOVU Series panel PCs are with high-performance computing power, fan-less design, low-power consumption, wide operating temperature, and wide-input-voltage range.

►► The IOVU is designed for highly durable in harsh environments, due to its rugged, compact, low power consumption, and embedded system hardware design without failure-prone hard disk and fan. Each IOVU equips with a IP 65 or IP 64 compliant front panel to protect against accidental contacts of foreign bodies and against water.

►► Each IOVU is driven by an powerful RISC CPU with built-in WDT (Watchdog Timer) functions, has a touch screen TFT display, and comes with a series of integrated external peripheral connectors including Ethernet ports, Serial ports, USB ports, Audio ports, CompactFlash™ slot, and optional wireless communication modules supporting WiFi 802.11 b/g, Bluetooth, GPS, or GSM/GPRS.



## Applications



Industrial Automation



Building Automation



Multi-media Applications



Vehicle PC

## Diversified Mounting Support and Rigorous Environmental Test

IOVU series panel PC have several mounting holes compliant with the VESA mounting standard (VESA 75 / 100) on the rear panel for stand mounting and other mounting methods.

### Wall Mount



Requires no cut out in the wall surface. It mounts directly on the existing wall or desk.

### Panel Mount



Requires a cut out in the wall surface. With four clamps to tighten the screws that pass through the panel mounting clamps



### IP64 / 65 dustproof and waterproof front panel

The IOVU front panel is IP64 / IP65 compliant. IP64 / 65 compliance guarantees the front panel is dustproof and water-proof. The IOVU front panel can withstand any industrial environment where dust and drizzle is encountered.



Water proof device

PIFA antenna inside

### Rugged design



The IOVU is directly mounted internally to a metal main frame rather than a fragile plastic cover. In addition, the IOVU case is made from ABS/PC (Acrylonitrile Butadiene Styrene/ Polycarbonate Alloy), which improves the stiffness over conventional material and makes the system more solid and durable.

## IOVU Intelligent Panel PC

### Introduction

IOVU series enables the great embedded flexibility for RISC-based panel PC applications. Built-in XScale or Alchemy CPU, LCD display, touch screen, I/O peripherals and pre-installed Windows CE5.0, the IOVU series provide the most cost-effective and stable solution for a diverse range of embedded RISC-based panel PC application. IOVU provides an easy way to collect, transfer, process, access and manage data which is generated or inquired in various applications such as Factory Automation, Home Automation, Medical, Transportation management, POS...etc.

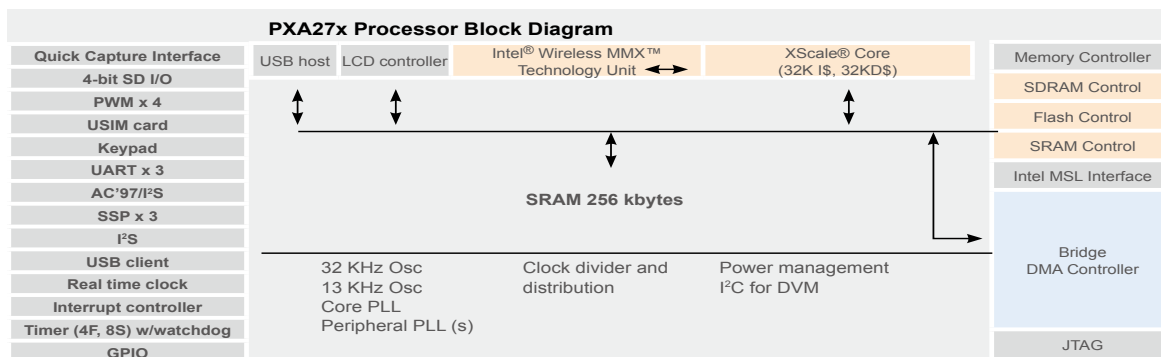


### RISC-based Solutions : The best platform for embedded system and Panel PC

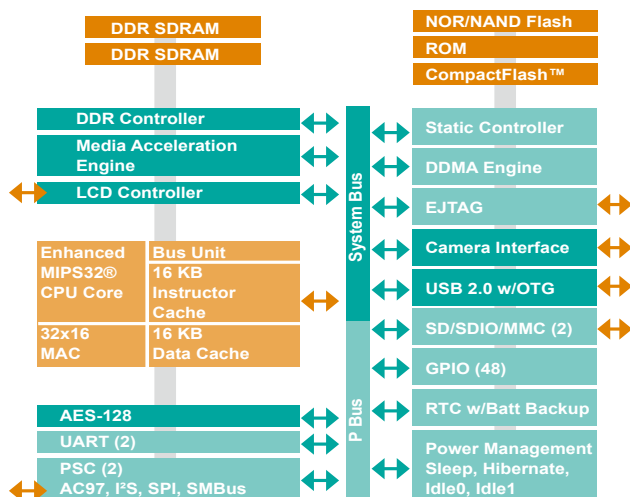
	4.3	5.7"	7"
<b>Model Name</b>	IOVU-430M	IOVU-570M IOVU-571N	IOVU-700M IOVU-751R
<b>CPU</b>	XScale® PXA270 416 MHz	Xscale® PXA 520 MHz Winbond Nuvoton 200 MHz	Xscale® PXA 520 MHz Alchemy AU1250 500 MHz
<b>Memory</b>	128MB	128MB	256MB
<b>Feature</b>	1. Projected- capacitor type multi touch screen 2. Built-in WiFi 802.11b/g function 3. GPIO and CAN bus control	1. Compact form factor 2. Built-in WiFi 802.11b/g function	1. PoE available 2. MPEG 1/2/4 support 3. Built-in WiFi 802.11b/g function

## MARVELL XScale® PXA270 and RMI Alchemy™ AU1250

High performance, ultra low power, lower cost, faster time-to-market, ARM V5TE compliant and robust tool chains make XScale® technology a compelling choice for applications ranging from smaller multimedia portable devices to high performance I/O or network applications.



IEI provides RMI Alchemy™ RISC-based technology to enable users to play DVD quality video efficiently at full-frame rates with low power consumption. The integrated MAE (Media Acceleration Engine) supports common digital video media including MPEG1, 2, 4, DivX, and WMV9 scaled up to 1024 x 768 pixel resolution, and delivers full D1 resolution without the need for a DSP or specialized coding.

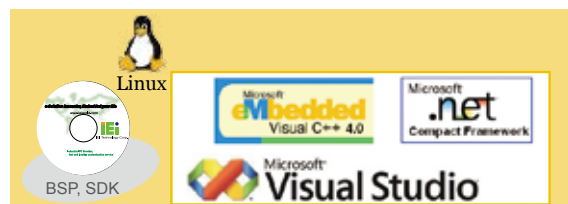


	XScale Technology	RMI Alchemy™	AMD Geode™
	<b>XScale PXA270</b>	<b>Alchemy™ Au1250™</b>	<b>AMD® LX800</b>
CPU Speed	520MHz	500 MHz	500MHz
Companion Chipset	No need	No need	AMD® CS5536
Super I/O	No need	No need	Winbond W83627EHG
System Memory	SDRAM	DDR I/II	DDR
Multimedia Support	MPEG1/2 with Software codec	Built-in Hardware MAE	MPEG1/2 with Software codec
H.D.D I/F	CompactFlash™	IDE	IDE
LCD I/F	18-bit TTL	24-bit TTL	24-bit TTL
Power Consumption	747 mW	492 mW	4W
Working Temperature	-20°C ~ 85°C	-40°C ~ 100°C	0°C ~ 50°C or -10°C ~ 70°C
Embedded OS Support	Windows® CE and Embedded Linux	Windows® CE and Embedded Linux	Windows® XP/XPe/CE

## Software Support

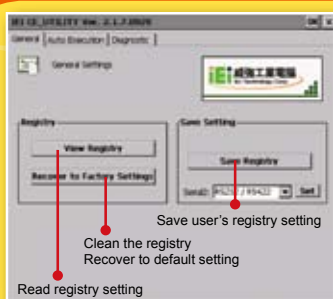
### SDK (Software Development Kit)

- Attached Software Development Kit (SDK) for eMbedded Visual C++ to program Windows® CE application.
- Built-in .NET Compact Framework support with related SDK
- Thin Client Technology, Microsoft RDP (Remote Desktop Protocol), to enable IOVU series to access Microsoft Windows® based applications installed on Microsoft Terminal Service server.
- Attached SDK including GUI, Sample Code, and Tool chain make users program application readily.



### IEI WinCE Utility

- Free pre-installed utilities for configuring and diagnosing your IOVU series panel PC



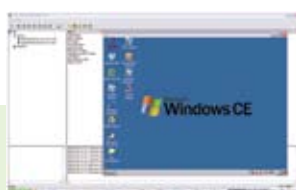
Easy to set programs for auto execution



Quickly verify peripheral function and check OS / Boot\_loader version

### RMT (Remote Management Tool)

- Free pre-installed utilities for configuring and diagnosing your IOVU series panel PC

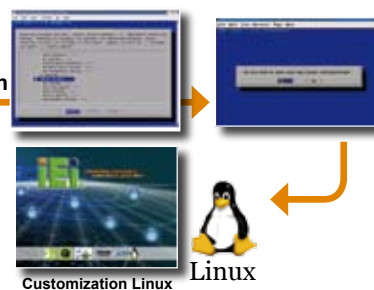


### BSP (Board Support Package)

#### Linux Kernel 2.6.18

- GNU standard Embedded Linux 2,6,18 bootloader and OS image.
- Secure Shell (OpenSSH) providing 128-bit, 192-bit or 256-bit encryption between the IOVU series and another system
- Built-in web browser and X-window system
- Related Linux drivers for onboard peripheral I/O, network and audio
- Optional Board Support Package (BSP) includes kernel source code for customers to customize their own OS image.

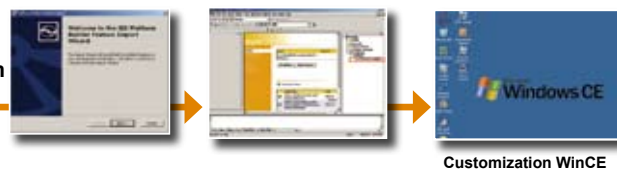
#### Embedded Linux Kernel configuration



#### Windows® CE5.0

- Standard Windows® CE5.0 professional version license.
- Optional Board Support Package (BSP) for customers to customize their own OS image.

#### Windows® Platform Builder



# IOVU RISC-based Panel PC specifications



Model Name	IOVU-430M	IOVU-570M	IOVU-571N	IOVU-751R	IMK-571R
SYSTEM					
CPU	XScale® PXA270 416 MHz	XScale® PXA 520 MHz	Nuvoton (Winbond) W90P910CBG 200 MHz	Alchemy™ AU1250 500 MHz	RMI Alchemy AU1250 500MHz CPU
Bootloader Storage	2 MB	2 MB	N/A	2 MB	2MB NOR Flash for bootloader
RAM	128 MB SDRAM	128 MB SDRAM	128MB SDRAM	256 MB DDR2	256MB DDR2
OS/Program Storage	1GB Mini secure digital card	1GB secure digital card	64MB NAND flash	1GB secure digital card	miniSD slot with default 2GB miniSD memory card for OS and user data/program
DISPLAY					
LCD Size	4.3"	5.7"	5.7"	7"	5.7"
LCD Color	262 K	262 K	262K	262 K	262K
Display Resolution	WQVGA	VGA	VGA	WVGA	VGA
LCD Brightness (cd/m <sup>2</sup> )	500	400	400	400	400
Dot Pitch (mm)	0.066(H) x 0.198(V)	0.06(H) x 0.18(V)	0.06(H) x 0.18(V)	0.064(H) x 0.191(V)	0.06(H) x 0.18 (V)
Viewing Angle (H-V)	100 / 60	140 / 100	140/ 100	140 / 100	140 / 100
Backlight MTBF	10000	25000	25000	50000	25000
Touch Screne	Projective-Capacitor Type	Resistor Type	Resistor Type	Resistor Type	Resistive Type 4-Wire Touch Screen
Multimedia Support	MPEG 1	MPEG 1	MPEG 1	MPEG 1/2/4 and WMV9	MPEG1/2/4 and WMV9
I/O and COMMUNICATION					
I/O Interface	1 x RS-232/422/485 (software controllable) 1 x Reset button 1 x 10/100Mbps LAN 1 x USB1.1 host 1 x CAN bus 6 x GPIO 1 x 2pin Terminal block DC input 1 x Mini SD card slot	1 x RS-232/422/485 (software controllable) 2 x 10/100Mbps LAN 2 x USB1.1 host 1 x SD card slot 1 x Reset button 1 x AT mode power switch 1 x 2pin Terminal block power input	1 x USB2.0 host 1 x USB client 1 x SD card slot 1 x 10/100Mbps LAN 1 x RS-232 1 x RS-422/485 1 x AT mode power switch	1 x 4-wired RS-232/422/485 (Software Controllable) 1 x RS-232 2 x 10/100Mbps LAN (one supports POE) 2 x USB2.0 host 1 x Reset button 1 x AT mode power switch 1 x 2pin Terminal block power input 1 x Power jack	Data input and display 1x Power LED 4x Function keys 1x1D/2D barcode scanner 1x Reset button 1x MSR(Optional)  Connectivity 1x RS-232 2x USB host Rev. 2.0 1x Stereo Audio Jack 2x Stereo Speaker
Audio	1.5W Speaker x 2	1.5W Speaker x 2	1.5W Speaker x 1	1.5W Speaker	2W Speaker x 2
Wireless LAN	802.11 b/g	802.11 b/g	N/A	N/A	802.11 b/g
DIMENSION					
Construction Material	ABS + PC Plastic	ABS + PC Plastic	ABS + PC Plastic	ABS + PC Plastic	ABS+PC Plastic
Net Weight (kg)	0.6	0.7	0.8	0.8	1.6
Front Panel Colco	Black	Black	Black	Black	Black
Dimension (W x H x D mm)	145 x 104 x 34	180 x 135 x 45	180 x 132 x 40	226 x 140 x 41	236 x 210 x 64
ENVIRONMENTAL / POWER					
Operating Temperature (°C)	-20°C~60°C	-20°C~60°C	0°C~50°C	-20°C~60°C	0°C~50°C
Front Panel Protection	IP65 Compliant	IP64 Compliant	IP64 Compliant	IP64 Compliant	N/A
Power Mode	AT	AT	AT	AT	AT
Power Requirement	12~36V DC input	12~36 V DC-IN	9~28 V DC-IN	6~30 V DC-IN	12~24V DC-IN
Power Consumption	7 W	8 W	8 W	8.5 W	8W
Vibration and Shock	MIL-STD-810F 1. Axes: 3 axes (Vertical / Transverse / Longitudinal) 2. 10 ~ 500Hz, 60min/axis 3. Equivalent to Z: 2.18Grms, X: 1.6Grms, Y: 1.96Grms				
Humidity	5%-90%RH	5%-90%RH	5%-90%RH	5%-90%RH	5%-90% RH

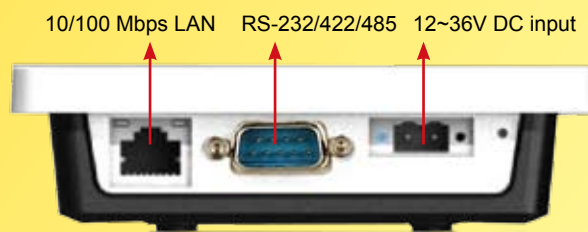
1  
Automation2  
Point of Service3  
Digital Signage4  
RISC-based Solutions5  
Medical Solutions



# IOVU-430M

## ARM-based Panel PC

While touch sensor is commonplace for single points of contact, IOVU-430M's multi-touch sensor enables a user to interact with the system with more than one finger at a time. IOVU-430's RISC-based system provides high performance, lower power consumption, wide operating temperature, rugged compact form factor and cost-effective. Built-in WiFi module, GPIO (general purpose input/output) and CAN bus control have varied applications be flexible.



## Whole plane multi-touch panel PC

### Features:

- RISC-based processor provides high performance and extremely low power consumption
- 4.3" widescreen WQVGA TFT LCD with projected-capacitor touch screen
- Multi-touch function provides flexible touch control
- Compact design with plastic housing and fan-less system
- Built-in 1.5w speakers
- Built-in 802.11b/g WiFi function
- CAN bus and GPIO provide flexible industrial control
- The whole plane multi-touch screen and IP65 compliant
- Mini secure digital card slot for storage extension



Mini secure digital card preinstalled Windows® CE5.0 operating system provides storage extension.

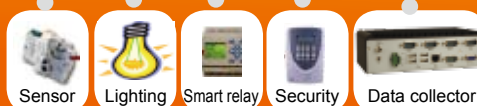
## Application

**Optional WiFi function supports 802.11b/g**

CAN bus

CAN network devices

GPIO  
(General Purpose Input/  
Output) control



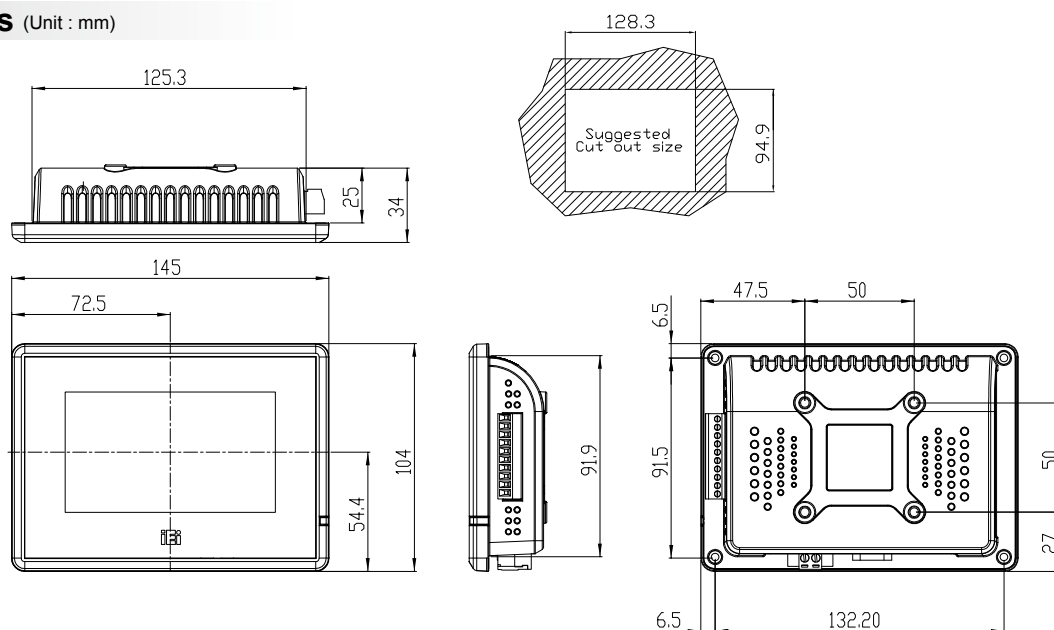
Remotely control

## IOVU-430M Specifications

<b>Model</b>	<b>IOVU-430M</b>
<b>LCD size</b>	4.3"
<b>Max. Resolution</b>	480 x 272
<b>Brightness (cd/m<sup>2</sup>)</b>	400
<b>LCD Color</b>	262K
<b>Pixel Pitch (mm)</b>	0.066(H) x 0.198(V)
<b>Backlight MTBF</b>	10000 hrs
<b>Touch Screen</b>	Projected-Capacitor
<b>CPU</b>	MARVELL XScale PXA270 416MHz
<b>RAM</b>	128MB SDRAM
<b>Bootloader Storage</b>	2MB boot ROM
<b>OS/Program Storage</b>	1GB Mini Secure Digital card
<b>I/O Ports and Switches</b>	1 x RS-232/422/485 COM port (software controllable)
	1 x Reset button
	1 x 10/100Mbps LAN
	1 x USB1.1 host
	1set CAN bus
	6sets GPIO 2pin Terminal block DC input

<b>Audio</b>	1.5W speaker x 2
<b>Construction Material</b>	ABS + PC Plastic
<b>LED Function</b>	1 x Power ON/OFF LED on front panel
<b>Mounting</b>	Wall, Stand, Vstand and Arm (VESA 50 x 50)
<b>Front Panel Color</b>	Black
<b>Dimension (W x H x D mm)</b>	145 x 104 x 34
<b>Operation Temperature (°C)</b>	-20°C ~ 60°C
<b>Storage Temperature (°C)</b>	-20°C ~ 80°C
<b>Net Weight (kg)</b>	0.7
<b>IP Level (front panel)</b>	IP 65
<b>Power Requirement</b>	12~36V DC input
<b>Power Consumption</b>	7W

### Dimensions (Unit : mm)



### Packing List

1 x IOVU-430M
1 x Null modem cable
1 x Screw kits
1 x Utility CD includes SDK, utilities, and technical document
1 x Touch pen

### Options

Part No.	Description
63000-FSP0601AD101C760-RS	12V/5A DC 60W power adapter with bare wire, 90~264V AC input

### Ordering Information

Part No.	Description
IOVU-430M-CE5/MT/-R10	4.3" TFT, WQVGA, 262K color, Multi-touch Panel PC with built-in Windows® CE 5.0 license
IOVU-430M-CE5/ST/-R10	4.3" TFT, WQVGA, 262K color, Single-touch Panel PC with built-in Windows® CE 5.0 license
IOVU-430M-CE5/MT/WL/-R10	4.3" TFT, WQVGA, 262K color, Multitouch Panel PC with built-in Windows CE 5.0 license and 802.11 b/g wireless LAN
IOVU-430M-CE5/ST/WL/-R10	4.3" TFT, WQVGA, 262K color, Single-touch Panel PC with built-in Windows CE 5.0 license and 802.11 b/g wireless LAN

# IOVU-570M ARM-based Panel PC

**NEW**


## Built-in WiFi function



WiFi function supports 802.11b/g



SD card

Preinstalled Windows® CE5.0 or ARM-Linux boot from secure digital card

2 x USB1.1 host

12~36 V DC-IN

Reset button

 10/100Mbps LAN  
RS-232/422/485  
(software controllable)


## Features:

- 5.7" TFT VGA LCD with resistive touch screen
- MARVELL XScale PXA270 520MHz processor and 128MB SDRAM
- Default 1GB secure digital card for OS and user data/programs
- Built-in 802.11b/g Wireless LAN
- Built-in 1.5W speakers
- IP64 compliant front panel
- Fan-less design for rigorous environments
- Preinstalled Windows® CE5.0 operating system.
- Windows® CE5.0 SDK for user application software development.

## Packing List

- 1 x IOVU-570M
- 1 x Utility CD includes application tools, SDK, and technical document.
- 1 x Null modem cable
- 1 x Touch pen

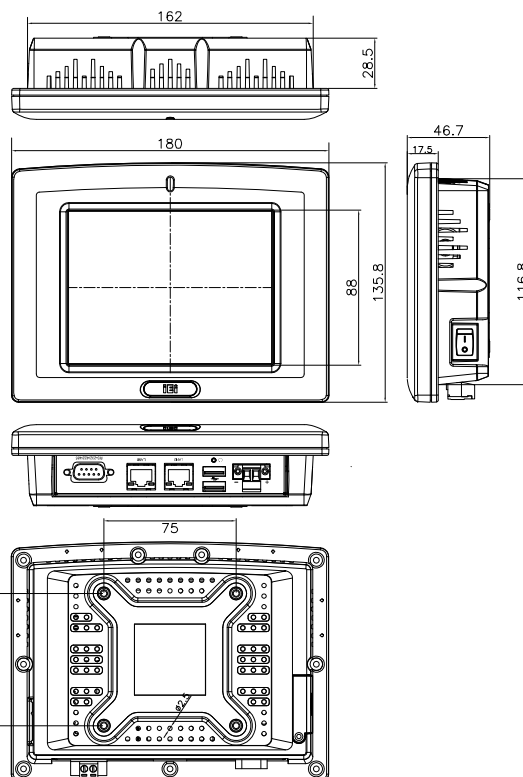
## Ordering Information

Part No.	Description
IOVU-570M-CE5/-R10	5.7", VGA fan-less touch panel PC with MARVELL XScale PXA270 CPU, 128MB SDRAM, 802.11b/g wireless LAN and built-in Windows® CE5.0 Operating System

## Options

Part No.	Description
ALFPK-08	Panel mount kit
AFLWK-07	VESA 75 wall mount kit
ARM-11-RS	LCD Monitor/PPC Arm kit loading capacity from 3kg~7kg
STAND-A08-RS	LCD Monitor/PPC Stand kit for VESA 75 and support up to 5 Kg
VSTAND-A07	LCD Monitor/PPC STAND V type for VESA 75, 0~90 degree adjustable hinge and support up to 2.5 Kg
AFLP-12BMSR-U	USB Magnetic Card Reader
AFLP-BRW01-U / AFLPBRB01-U	USB Barcode Reader (White / Black)
AFLP-CDB01 / AFLP-CDW01	VFD Customer Display (Green) 5 x 7 dot matrix (Black / White)
63000-FSP0601AD101C760-RS	12V/5A DC 60W power adapter with bare wire, 90~264V AC input

## Dimensions (Unit : mm)



1

Automation

2

Point of Service

3

Digital Signage

4

RISC-based Solutions

5

Medical Solutions

# IOVU-571N

## ARM-based Panel PC

**NEW**


### Features:

- Nuvoton(Winbond) W90P910CBG 200MHz processor
- Low power consumption
- Fanless design for rigorous environments
- 5.7" TFT VGA LCD with resistive touch screen
- Standard peripheral device interface connectors include Ethernet, serial ports, SD, USB and Audio
- Preinstalled Windows® CE5.0 embedded operating system
- Windows® CE5.0 SDK for user application software development
- Default 128MB Flash for OS and user data/programs
- DC input +9V~+28V DC

### Packing List

- 1 x IOVU-571N
- 1 x Utility CD includes application tools, SDK, and technical document.
- 1 x Null modem cable
- 1 x Touch pen
- 1 x Screw kits

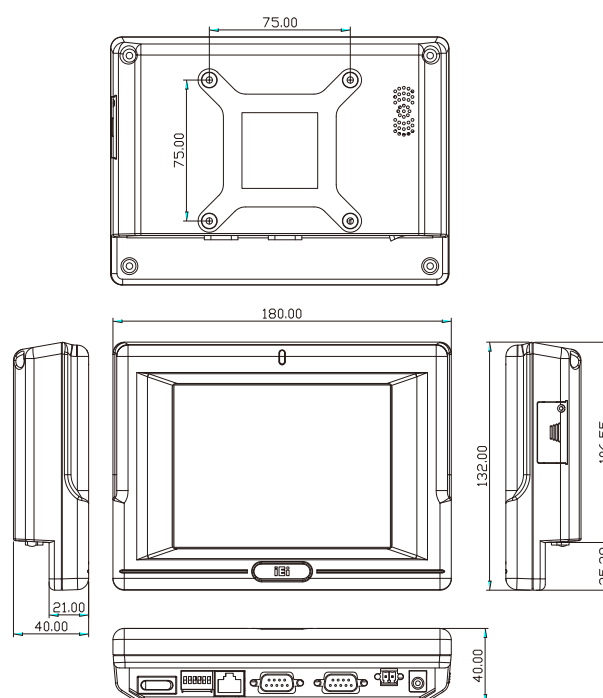
### Ordering Information

Part No.	Description
IOVU-571N-CE5/-R10	5.7" VGA fan-less touch panel PC with Winbond W90P910CBG CPU, 128MB SDRAM and built-in Windows® CE5.0 Operating System

### Options

Part No.	Description
ALFPK-08	Panel mount kit
AFLWK-07	VESA 75 wall mount kit
ARM-11-RS	LCD Monitor/PPC Arm kit loading capacity from 3kg~7kg
STAND-A08-RS	LCD Monitor/PPC Stand kit for VESA 75 and support up to 5 Kg
VSTAND-A07	LCD Monitor/PPC STAND V type for VESA 75, 0~90 degree adjustable hinge and support up to 2.5 Kg

### Dimensions (Unit : mm)





## IOVU-751R

## MIPS-based Panel PC

**NEW**MPEG1  
MPEG4MPEG2  
WMV9DivX  
MPEG4**Hardware  
Decode**

Traditionally, Power over Ethernet (PoE) technology has been used to power low voltage devices such as wireless LAN Access Points, Voice over IP phones and IP-based cameras. However, the IOVU-751R is a 7" touch screen panel PC powered by Ethernet and with enhanced built-in hardware multimedia acceleration engine (MAE) to support MPEG1/2/4, DivX, and WMV9 in full D1 resolution. The power requirement is less than 13 W, and falls within the power specified in the IEEE 802.3af PoE industry standard.

Intranet  
Internet

Power Sourcing Ethernet Switch

Wireless LAN  
Access Point

IP Camera



VoIP Phone

RMI  
Raza Microelectronics, Inc.MPEG1  
MPEG4MPEG2  
WMV9DivX  
MPEG4

Windows CE 5.0



Linux

MIPS  
TECHNOLOGIES

## Applications

The IOVU-751R is a rugged, compact device that has low power consumption and is designed without failure-prone hard disks and fans; moreover, its high-performance multimedia support is a solution for diverse range of applications :

- > POE supports Ethernet transmission for updating advertisement and doesn't need additional power supply.
- > Compliant with varied digital video media including MPEG1, 2, 4, DivX, and WMV9.
- > Internal speakers and fan-less feature for great audio presentation.



## Slim POS

- PoE supports Ethernet service and power supply function directly.
- Easy to integrate optional barcode reader, magnetic card reader, and customer display.



## Home / Building Automation

- Update the latest information by Ethernet like cookbook, entertainment program...etc.
- Power meter, lighting control, and home-safety.



## Digital Signage &amp; Game Device

- Update advertisement programs by Ethernet and support multimedia functions.
- Access games, sport training programs and internet service. Users don't need an individual coach anymore.

## Thin/Client

- Provide the service information to all passengers.
- Varied movies, games, and chat room for all passengers.



1

Automation

2

Point of  
Service

3

Digital  
Signage

4

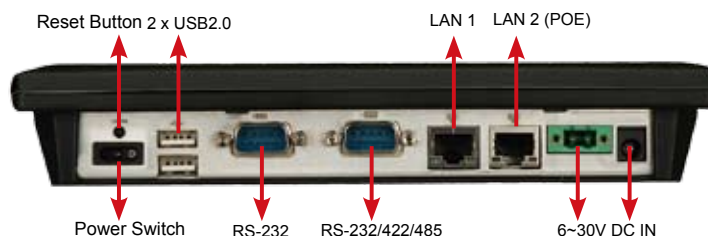
RISC-  
based  
Solutions

5

Medical  
Solutions

## Features:

- Processor includes MAE (Media Acceleration Engine) supports MPEG 1/2/4 and WMV9
- RISC-based processor provides high performance and extremely low power consumption
- POE (Power over Ethernet) function
- 7" widescreen WVGA TFT LCD with resistive touch screen
- Compact design with plastic housing
- Fanless system
- Built-in 1.5W speakers
- Secure Digital card slot for storage extension
- IP64 compliant front panel



## IOVU-751R Specifications

<b>Model</b>	IOVU-751R
<b>LCD Size</b>	7"
<b>Max. Resolution</b>	800 x 480
<b>Brightness (cd/m2)</b>	400
<b>LCD Color</b>	262K
<b>Pixel Pitch (mm)</b>	0.0635 (H) x 0.1905 (V)
<b>Backlight MTBF</b>	50000 hrs
<b>Touch Screen</b>	Resistive Type 4-wire
<b>CPU</b>	Alchemy™ Au1250™ 500 MHz
<b>RAM</b>	256 MB DDR2
<b>Bootloader Storage</b>	2 MB boot ROM
<b>OS/Program Storage</b>	1 GB Secure Digital card
<b>I/O Ports and Switches</b>	1 x RS-232 COM port
	1 x RS-232/422/485 COM port (Software Controllable)
	1 x Reset button
	1 x On/Off power switch
	2 x 10/100Mbps LAN (one supports POE) 2 x USB2.0 host

<b>Audio</b>	1.5W speaker x 2
<b>Construction Material</b>	ABS + PC Plastic
<b>LED Function</b>	1 x Power ON/OFF LED on front panel
<b>Mounting</b>	Panel, Wall, Stand, Vstand and Arm (VESA 75 x 75)
<b>Front Panel Color</b>	Gray 7C
<b>Dimensions (W x H x D mm)</b>	226 x 140 x 40
<b>Operating Temperature (°C)</b>	-20 ~ 60
<b>Storage Temperature (°C)</b>	-20 ~ 80
<b>Net Weight (kg)</b>	0.8
<b>IP Level (front panel)</b>	IP 64
<b>Power Requirement</b>	6~30 V DC
<b>Power Consumption</b>	8.5 W

## Packing List

1 x IOVU-751R
1 x Utility CD includes application tools, SDK, and technical document.
1 x Null modem cable
1 x Touch pen
1 x Screw kit

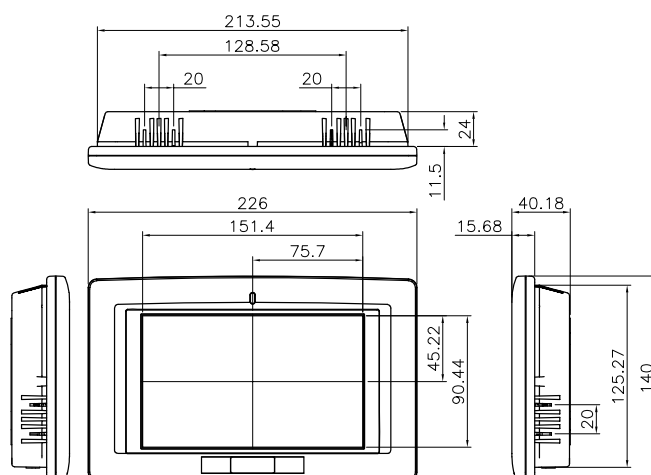
## Ordering Information

Part No.	Description
IOVU-751R-CE5/-R10	7", WVGA fan-less touch panel PC with RMI Alchemy AU1250 CPU, 256MB DDR2 SDRAM, LAN supports POE function and built-in Windows® CE5.0 Operating System
IOVU-751R-UX/-R10	7", WVGA fan-less touch panel PC with RMI Alchemy AU1250 CPU, 256MB DDR2 SDRAM, LAN supports POE function and built-in ARM-Linux 2.6.18 Operating System

## Options

Part No.	Description
ALFPK-08	Panel mount kit
AFLWK-07	VESA 75 wall mount kit
ARM-11-RS	LCD Monitor/PPC Arm kit loading capacity from 3kg~7kg
STAND-A08-RS	LCD Monitor/PPC Stand kit for VESA 75 and support up to 5 Kg
VSTAND-A07	LCD Monitor/PPC STAND V type for VESA 75, 0~90 degree adjustable hinge and support up to 2.5 Kg
AFLP-12BMSR-U	USB Magnetic Card Reader
AFLP-BRW01-U / AFLPBRB01-U	USB Barcode Reader (White / Black)
AFLP-CDB01 / AFLP-CDW01	VFD Customer Display (Green) 5 x 7 dot matrix (Black / White)
63000-FSP0601 AD101C-RS	POWER ADAPTER, 90V-264V input and 12V/5A/60W output; PLUG $\phi$ 2.5/ $\phi$ 5.5/no lock
63000-FSP0601AD101C760-RS	12V/5A DC 60W power adapter with bare wire, 90~264V AC input

## Dimensions (Unit : mm)



**DivX** hardware  
decode

[illegible]