

8P1P YYY 2 0 0 GRF 01

SERIES 14.00 [0.551]

OF POSITIONS (Ex. 002) **SEE CHART A**

2 = FEMALE

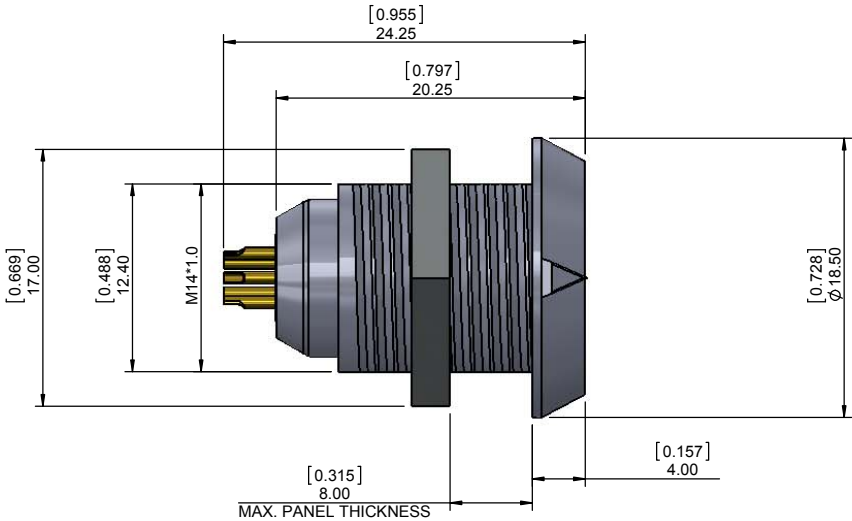
SOLDER CUP (PANEL MOUNT)

1 = GOLD FLASH

RoHS COMPLIANT

NUT "B" COLOR G = GREY

PLASTIC SHELL



CHARACTERISTICS

MATERIALS

HOUSING : ABS+PC

HOUSING COLOR : GREY

NUT A : BRASS

NUT A PLATING : NICKEL

CONTACTS : COPPER ALLOY

CONTACT PLATING : 7µ" GOLD PLATED OVER 196µ" NICKEL MIN.

INSULATOR : PPS (HIGH TEMPERATURE)

MECHANICAL

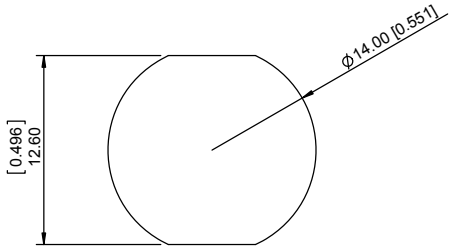
DURABILITY: 2000 CYCLES

OPERATING TEMP. RANGE: -20° C ~ +120° C

PROCESS TEMPERATURE : 260°C FOR 5 SECONDS

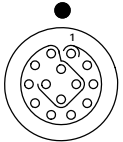
MAX. TORQUE VALUE : 0.7 Nm [6.19 IN/lbs]

IP RATING: 50



PANEL CUTOUT

TOLERANCE = +0.10, -0.0
[+0.004, -0.00]



14 POSITION
26 AWG MAX.
3 AMP MAX.
PIN Ø = 0.50 [0.020]

CONTACT
RESISTANCE = 10 mΩ
TEST VOLTAGE = 600V
WORKING VOLTAGE = 333V

CHART A

● = KEY LOCATION

VIEW FROM TERMINATION END

<p>2 POSITION 22 AWG MAX. 10 AMP MAX. PIN Ø = 1.30 [0.051]</p> <p>CONTACT RESISTANCE = 5 mΩ TEST VOLTAGE = 1250V WORKING VOLTAGE = 500V</p>	<p>3 POSITION 22 AWG MAX. 10 AMP MAX. PIN Ø = 1.30 [0.051]</p> <p>CONTACT RESISTANCE = 5 mΩ TEST VOLTAGE = 1250V WORKING VOLTAGE = 500V</p>	<p>4 POSITION 22 AWG MAX. 8 AMP MAX. PIN Ø = 0.90 [0.035]</p> <p>CONTACT RESISTANCE = 6 mΩ TEST VOLTAGE = 1250V WORKING VOLTAGE = 500V</p>	<p>5 POSITION 22 AWG MAX. 8 AMP MAX. PIN Ø = 0.90 [0.035]</p> <p>CONTACT RESISTANCE = 6 mΩ TEST VOLTAGE = 1100V WORKING VOLTAGE = 500V</p>	<p>6 POSITION 24 AWG MAX. 6 AMP MAX. PIN Ø = 0.70 [0.028]</p> <p>CONTACT RESISTANCE = 7.5 mΩ TEST VOLTAGE = 1000V WORKING VOLTAGE = 450V</p>	<p>7 POSITION 24 AWG MAX. 6 AMP MAX. PIN Ø = 0.70 [0.028]</p> <p>CONTACT RESISTANCE = 7.5 mΩ TEST VOLTAGE = 1000V WORKING VOLTAGE = 450V</p>	<p>8 POSITION 24 AWG MAX. 5 AMP MAX. PIN Ø = 0.70 [0.028]</p> <p>CONTACT RESISTANCE = 7.5 mΩ TEST VOLTAGE = 875V WORKING VOLTAGE = 400V</p>	<p>9 POSITION 26 AWG MAX. 3 AMP MAX. PIN Ø = 0.50 [0.020]</p> <p>CONTACT RESISTANCE = 10 mΩ TEST VOLTAGE = 600V WORKING VOLTAGE = 333V</p>	<p>10 POSITION 26 AWG MAX. 3 AMP MAX. PIN Ø = 0.50 [0.020]</p> <p>CONTACT RESISTANCE = 10 mΩ TEST VOLTAGE = 600V WORKING VOLTAGE = 333V</p>
---	---	--	--	--	--	---	--	---

RoHS COMPLIANT



THESE DRAWINGS AND SPECIFICATIONS
ARE THE PROPERTY OF NorComp AND
SHALL NOT BE REPRODUCED, COPIED
OR USED AS THE BASIS FOR THE
MANUFACTURE OR SALE OF APPARATUS
WITHOUT WRITTEN PERMISSION.

NorComp

DRAWN:
M. SIGMON

DATE:
10-04-16

SCALE:
N.T.S.

SHEET
1 OF
1

REV:
1

CHECKED:

DATE:

DWG NO.

8P1PYYY200GRF01