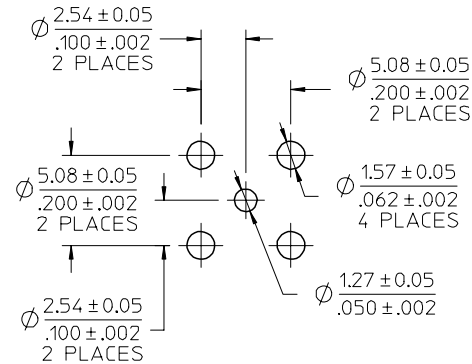
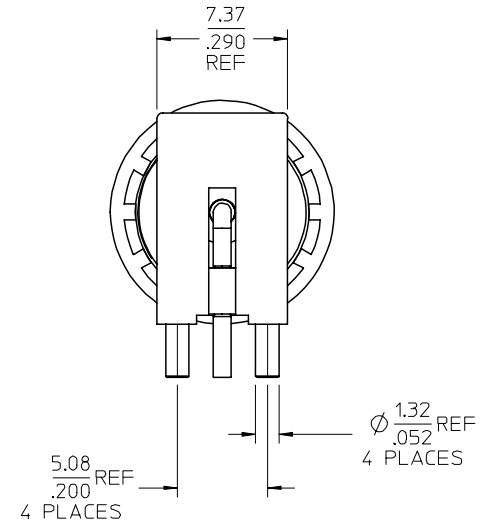
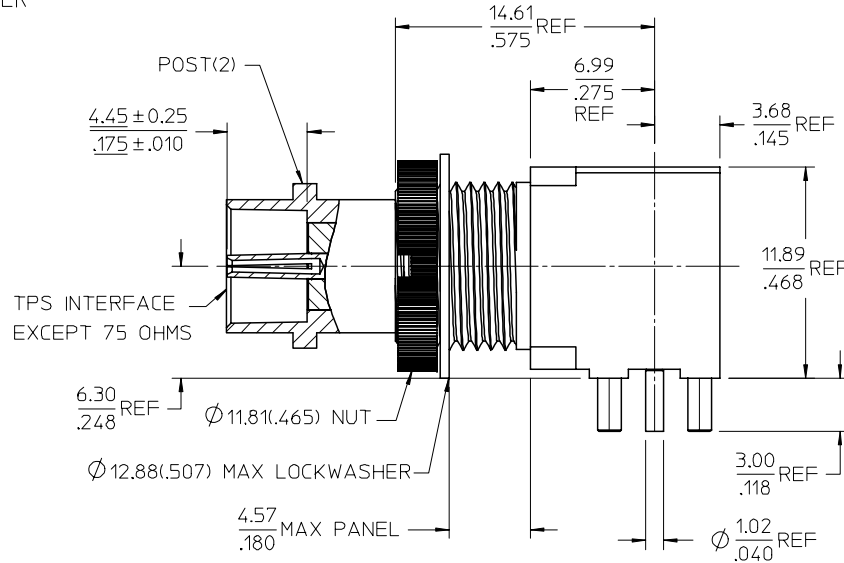
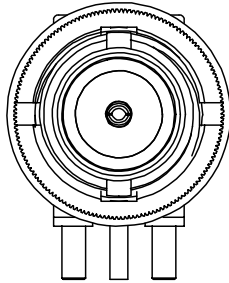


MATERIALS AND FINISHES

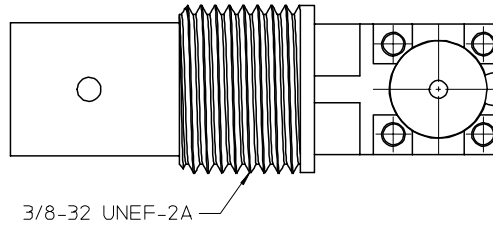
BODY ZINC
PLATED SEE TABLE

CENTER CONTACT BERYLLIUM COPPER
PLATED GOLD

INSULATOR TEFLON (PTFE)



RECOMMENDED PCB
LAYOUT



73415-2204	SINGLE BAG VERSION OF 73415-2202
73415-2203	SINGLE BAG VERSION OF 73415-2201
73415-2202	NICKEL
73415-2201	GOLD 10 μ INCHES MAX OVER NICKEL 100 μ INCHES
73415-2200	OBSOLETE
PART NO.	PLATING

CHG: ADDED -2203 & -2204. EC NO: URF-2007-0254 DRAWN: ARBERTSON 2007/01/04 CHKD: 2007/01/04 APPR: JWI/ENER 2007/01/04	QUALITY SYMBOLS	DESCRIPTION	GENERAL TOLERANCES (UNLESS SPECIFIED)		DIMENSION STYLE		SCALE	DESIGN UNITS	THIRD ANGLE PROJECTION			
				mm	INCH	MM/IN			METRIC			
			▽=0	4 PLACES	± ---	± ---	SSS	DRAWN BY DATE	TITLE	TPS JACK, R/A, PCB BLKHD, 75 OHMS EWR-1090 TPS-J/PCB		MOLEX INCORPORATED
			▽=0	3 PLACES	± ---	± ---	CHECKED BY DATE	2000/06/26				
				2 PLACES	± ---	± ---	TEF	2000/06/27				
				1 PLACE	± ---	± ---	APPROVED BY DATE	2000/06/27				
				ANGULAR ± 2 °		GMH	2000/06/27	DOCUMENT NO.		SHEET NO.		
				DRAFT WHERE APPLICABLE MUST REMAIN WITHIN DIMENSIONS		MATERIAL NO.		SD-73415-220		1 OF 1		
						SIZE		SEE TABLE				

CHG: ADDED -2203 & -2204.

EC NO: URF2007-0754

DRW: ARROBERTSON 2007/01/04

CHKD: 2007/01/04

APPR: JIM ENEER 2007/01/04

REV DESCRIPTION

B2

Mouser Electronics

Authorized Distributor

Click to View Pricing, Inventory, Delivery & Lifecycle Information:

Molex:

73415-2202