

4

3

2

1

THIS DRAWING IS UNPUBLISHED.

RELEASED FOR PUBLICATION

© COPYRIGHT

ALL RIGHTS RESERVED.

LOC

DIST


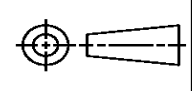
REVISIONS

P	LTR	DESCRIPTION	DATE	DWN	APVD
	B1	ECR-13-015075	27SEP13	RS	LZ

REPLACED BY OCEAN STYLE APPLICATOR PART
NUMBER 2151576-1

FOR REPLACEMENT PARTS FOR APPLICATOR 1528356
REFER TO ADDITIONAL PAGE(S). SPARE PARTS KIT (IF LISTED)
WILL REMAIN AVAILABLE.

THE REPLACEMENT OCEAN STYLE APPLICATOR HAS THE
SAME TERMINATOR/PRESS INTERFACE AS APPLICATOR
1528356

THIS DRAWING IS A CONTROLLED DOCUMENT.		DWN R.SHEN		 TE Connectivity			
DIMENSIONS:		CHK LJ.ZHANG					
		APVD U.GUO		NAME FINE ADJ SIDE FD HD-I APPL			
		PRODUCT SPEC					
		APPLICATION SPEC					
MATERIAL		WEIGHT		SIZE A3	CAGE CODE	DRAWING NO C- 1528356	RESTRICTED TO
FINISH		CUSTOMER ACCESSIBLE PRODUCTION DRAWING		SCALE	SHEET 1 OF 2	REV B1	

THIS DRAWING IS A CONTROLLED DOCUMENT

LAYOUT L1528356

SET UP GAGE 458637-3

20

THIS DRAWING IS UNPUBLISHED.

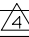



RELEASED FOR PUBLICATION

BY AMP INCORPORATED. ALL RIGHTS RESERVED.

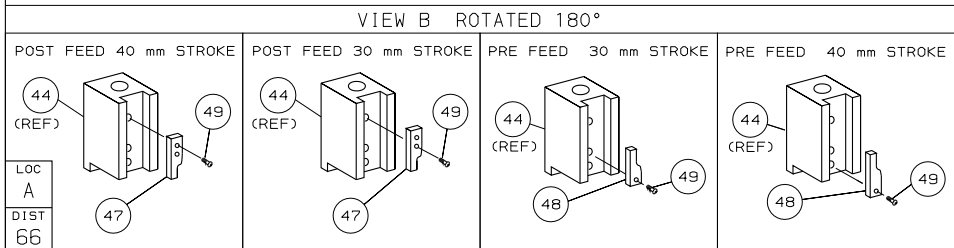
AMP 1756 REV 3-92

DRAWING MADE IN THIRD ANGLE PROJECTION

PART NUMBER	REV	FIRST USED	TERMINATOR	FEED TYPE	DESCRIPTION
1528356-1	B	-	LEADMAKER	MECH POST FEED	CUTS CARRIER
1528356-2	B	-	BENCH	MECH PRE FEED	CUTS CARRIER
1528356-6	B	-	LEADMAKER	MECH POST FEED	CONTINUOUS CARRIER
7-1528356-1	B	-	LEADMAKER	MECH POST FEED	-1 AND SPARE PARTS
7-1528356-2	B	-	BENCH	MECH PRE FEED	-2 AND SPARE PARTS
7-1528356-6	B	-	LEADMAKER	MECH POST FEED	-6 AND SPARE PARTS
7-1528356-7	A	-	-	-	SPARE PARTS KIT

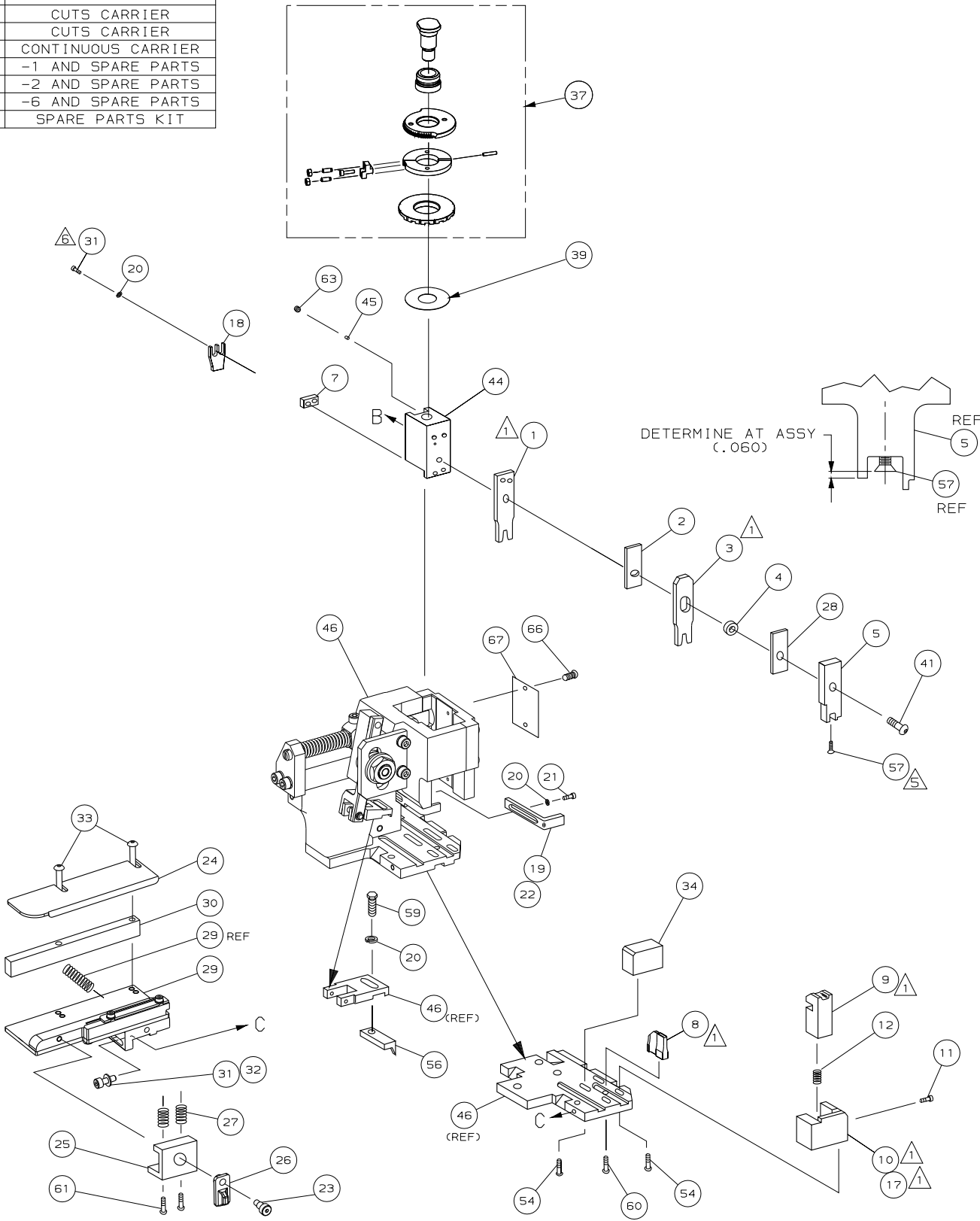
CRIMP DATA AMP TERMINAL AMP CRIMP SPECS			
TERMINAL NAME: POWER QUADLOK, TAB AND RECEPT CONTACT.			
CRIMP	SIZE	TYPE	RANGE
WIRE	2.54 [.100 IN]	F	1.50mm ² - 2.50mm ²
INSUL	5.08 [.200 IN]	0	4.1 MAX [.161 IN]
WIRE STRIP LENGTH		APPL INSTRUCTION	
4.70-5.30 [.185-.209 IN]		408-8322 & 408-8490	
TERMINAL	-	-	FEED
APPL SPEC	114-18141	-	18.30 [.720 IN]
TERMINALS APPLIED			
TERMINAL		SEAL	-
968133	TAB	967607	-
968121	RECEPTACLE	-	-
-	-	-	-
-	-	-	-
-	-	-	-
-	-	-	-
-	-	-	-
-	-	-	-
WIRE SIZE		CRIMP HEIGHT	REF SETTING
mm ² AWG			
2.5mm ²		1.99 ±0.05 [.078 ±.002 IN]	B 1
1.5mm ²		1.69 ±0.05 [.067 ±.002 IN]	D 0
-		-	-
-		-	-
-		-	-
-		-	-
-		-	-
-		-	-
-		-	-
-		-	-
-		-	-
-		-	-
-		-	-
-		-	-
-		-	-
-		-	-

1. RECOMMENDED SPARE PARTS.
2. GREASE RAM, CAM, CAM FOLLOWER AND FEED ROD LIGHTLY.
3. LUBRICATE DAILY PER THE APPLICATOR INSTRUCTION SHEET SUPPLIED WITH THE APPLICATOR.
4. THIS APPLICATOR APPLIES TERMINAL WITH A SEAL. INSULATION DIA QUOTED IS OUTSIDE DIAMETER OF SEAL. WIRE INSULATION DIA IS DEPENDENT ON SEAL BEING APPLIED. SEAL P/N 967607-1 INS RANGE 2.2 - 3.0 [.087-.118 IN]
5. APPLY TORQ-SEAL IN ALLEN SOCKET TO FILL HOLE AFTER FLAT HD HAS BEEN ADJUSTED TO CORRECT HEIGHT AT QUALIFICATION. APPLY #1-23419-5 LOC-TITE TO THREADS.
6. CUT TO LENGTH AT ASSY.



*** WARNING:**

ON INSTALLATION, SET WIRE DISC TO LARGEST WIRE SIZE SETTING. USE OF SETTINGS BELOW MIN REQUIRED CRIMP HEIGHT SETTING WILL CAUSE DAMAGE TO CRIMP TOOLING.



-	1	1	1	1	1	1	1528356	PRINT, APPLICATOR LOG SHEET	73
-	1	1	1	1	1	1	1338705-3	DOCUMENTATION PACKAGE	71
-	-	-	-	-	-	-	-	-	70
-	-	-	-	-	-	-	-	-	69
-	-	-	-	-	-	-	-	-	68
-	1	1	1	1	1	1	461264-5	PLATE, IDENTIFICATION	67
-	2	2	2	2	2	2	21017-2	SCR, DRIVE (#2x.19) ID PLATE	66
-	-	-	-	-	-	-	-	-	65
-	1	1	1	1	1	1	3-18031-0	SCR, SKT SET (M6X6) RAM	64
-	-	-	-	-	-	-	-	-	63
-	2	2	2	2	2	2	2-18032-5	SCR, SET (M5X20) DRAG	62
-	1	1	1	1	1	1	18024-7	SCR, BHC (M4X10) ANVIL	61
-	1	1	1	1	1	1	5-18022-2	SCR, HEX (M4X8) FEED FINGER	60
-	-	-	-	-	-	-	-	-	59
-	1	1	1	1	1	1	985575-3	SCR, FHC (M3X10) DEP	58
-	1	1	1	1	1	1	1338685-1	PAWL, FEED	57
-	-	-	-	-	-	-	-	-	56
-	4	4	4	4	4	4	18024-8	SCR, BHC (M4x12) SHEAR HOLDER	55
-	-	-	-	-	-	-	-	-	54
-	-	-	-	-	-	-	-	-	53
-	-	-	-	-	-	-	-	-	52
-	-	-	-	-	-	-	-	-	51
-	-	-	-	-	-	-	-	-	50
-	1	1	1	1	1	1	18024-3	SCR, BHC (M3X10) CAM	49
-	-	-	-	-	-	-	1338675-1	CAM, PRE FEED 30 & 40 mm ST	48
-	1	-	1	1	-	1	1338676-1	CAM, POST FEED 30 & 40 mm ST	47
-	1	1	1	1	1	1	1320999-3	APPLICATOR BASIC SUBASSY	46
-	1	1	1	1	1	1	690191-1	PLUG, NYLON	45
-	1	1	1	1	1	1	1338660-1	RAM	44
-	-	-	-	-	-	-	-	-	43
-	-	-	-	-	-	-	-	-	42
-	1	1	1	1	1	1	992285-2	SCR, SHC (M8X25) RAM LOW HD	41
-	-	-	-	-	-	-	-	-	40
-	1	1	1	1	1	1	690125-1	SHIM SUBASSY	39
-	-	-	-	-	-	-	-	-	38
-	1	1	1	1	1	1	879103-2	FINE ADJUST HEAD SUBASSY	37
-	-	-	-	-	-	-	-	-	36
-	-	-	-	-	-	-	-	-	35
-	1	1	1	1	1	1	1320934-4	SUPPORT, TERMINAL	34
-	2	2	2	2	2	2	1-18024-0	SCR, BHC (M4X20) STRIP GUIDE	33
-	1	1	1	1	1	1	18027-2	WASHER, FLAT (M4)	32
-	3	3	3	3	3	3	1-18023-2	SCR, SKT CAP (M4X12) MOUNT BLOCK	31
-	1	1	1	1	1	1	1320908-6	SPACER, STRIP GUIDE	30
-	1	1	1	1	1	1	1633073-2	STRIP GUIDE PLATE ASSY	29
-	1	1	1	1	1	1	1-455888-6	SPACER, FRONT SHEAR DEP	28
-	2	2	2	2	2	2	1-22284-0	SPRING, DRAG	27
-	1	1	1	1	1	1	356835-1	LEVER, DRAG RELEASE	26
-	1	1	1	1	1	1	240792-1	DRAG, TERMINAL	25
-	1	1	1	1	1	1	1320928-1	PLATE, STRIP GUIDE	24
-	1	1	1	1	1	1	980371-4	SCR, SHC SHLD	23
-	1	-	1	1	-	1	690472-2	STRIPPER	22
-	1	1	1	1	1	1	1-18023-1	SCR, SHC (M4X10) STRIPPER	21
-	4	4	4	4	4	4	18025-2	WASHER, LOCK (M4) STRIPPER	20
-	-	1	-	-	1	-	690472-1	STRIPPER	19
-	1	1	1	1	1	1	879657-2	HOLDER, TERMINAL	18
-	1	-	-	1	-	-	1338684-2	HOLDER, SHEAR, FRONT (NO-CUT)	17
-	-	-	-	-	-	-	-	-	16
-	-	-	-	-	-	-	-	-	15
-	-	-	-	-	-	-	-	-	14
-	-	-	-	-	-	-	-	-	13
-	1	1	1	1	1	1	3-22280-3	SPRING, SHEAR	12
-	1	1	1	1	1	1	356885-5	STOP, SHEAR	11
-	-	1	1	-	1	1	1-1320921-0	HOLDER, SHEAR, FRONT (CUT)	10
-	1	1	1	1	1	1	318707-7	SHEAR, FLOAT (FRONT)	9
-	1	2	2	2	1	1	3-1333206-5	ANVIL	8
-	1	1	1	1	1	1	5-240641-0	SPACER, DEPRESSOR (REAR)	7
-	-	-	-	-	-	-	-	-	6
-	1	1	1	1	1	1	1338680-9	DEPRESSOR, SHEAR (FRONT)	5
-	1	1	1	1	1	1	238011-2	SPACER, BLOCK CRIMPER	4
-	1	2	2	2	1	1	562195-1	CRIMPER, INSULATION	3
-	1	1	1	1	1	1	1-455888-7	SPACER, CRIMPER	2
-	1	2	2	2	1	1	456407-5	CRIMPER, WIRE	1
-77	-76	-72	-71	-6	-2	-1	PART NO	DESCRIPTION	ITEM NO
-	-	-	-	-	-	-	REVISION OF EACH ASSY NO (WHEN BLANK, USE DWG REVISION)		
QTY REQD PER ASSY							PARTS LIST		
DIMENSIONS, mm [INCHES]							MATL	HT TR	FIN
DO NOT SCALE PRINT.									
TOLERANCES UNLESS OTHERWISE SPECIFIED:									
1 PLC DEC ±-									
2 PLC DEC ±-									
3 PLC DEC ±-									
ANGLES ±-									
SURF TEXTURE, REMOVE BURRS, BREAK SHARP EDGES RO.36 MAX									
CHG CODE									
00779							CUSTOMER AND ASSEMBLY DRAWING		
RESTRICTED TO									