

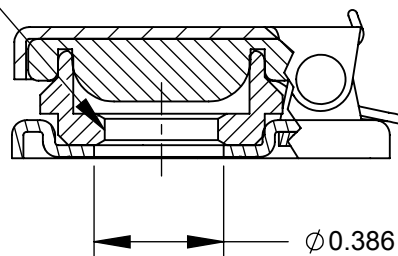
NOTES:

1. MATERIALS:

COVER & BASE - STEEL
 FINISH MIL-F-14072 (SIG. - C)
 BASIC FINISH #P-211 TYPE I EXPOSURE
 FINAL FINISH PER TT-E-529 ENAMEL
 SYNTHETIC SEMI-GLOSS
 DARK OLIVE DRAB 24087 - A2

GASKET - SYNTHETIC RUBBER
 TORSION SPRING - STAINLESS STEEL
 AXLE - COPPER ALLOY, NICKEL PLATED
 NUT - COPPER ALLOY, NICKEL PLATED

3/8-32 UNEF-2B
 THREAD



2. HEX NUT SHIPPED UNASSEMBLED

3. THIS PRODUCT IS RoHS COMPLIANT.

CUSTOMER DRAWING

						THIS DRAWING DESCRIBES A DESIGN CONSIDERED PROPRIETARY IN NATURE, DEVELOPED AND MANUFACTURED BY SWITCHCRAFT INC. AND IS RELEASED ON A CONFIDENTIAL BASIS FOR IDENTIFICATION PURPOSES ONLY.													
					UNLESS OTHERWISE SPECIFIED 1. ALL DIMENSIONS IN INCHES - TWO PLACE DECIMALS ±0.02 - THREE PLACE DECIMALS ±0.005	SIZE		WIDTH		MULT		LBS/M		TEMPER					
						FINISH SPEC No.						MATERIAL SPEC No.							
						FIRST USED ON				SCALE 1.75:1				Switchcraft®					
B	26771	05/13/11	JEB	TJK		DATE DRAWN 9-19-06	BY RF	CHKD RF 9-19-06		APVD TJK 9-19-07									
A	25429	9-19-07	RF	TJK		SHEET 1 OF 1													
REV	ECO NUMBER	DATE	BY	APVD	NAME JAX COVER, RoHS						PART No. 510X						REV B		
REVISIONS					DO NOT SCALE DRAWING														

SolidWorks CAD File

