

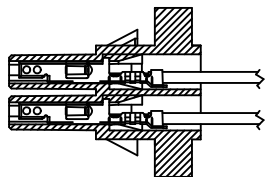
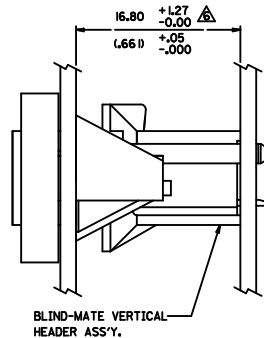
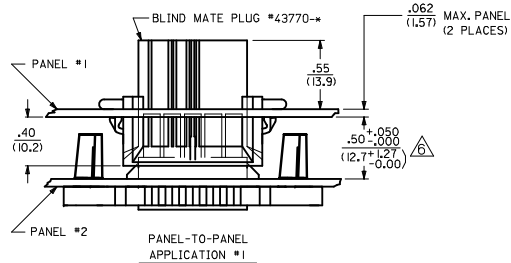


- NOTES:**
1. MATERIAL:
NYLON, 94V-2, COLOR: NATURAL (WHITE).
 2. FINISH: NONE
 3. PRODUCT SPECIFICATION: PS-43759-0001
 4. PACKAGING SPECIFICATION: PK-40873-0134
 5. PART MATES WITH MINI-FIT B.M.I. HEADER #43759, 45567 OR 43693, AND BMI PLUG # 43770.
 6. A MAXIMUM TOLERANCE OF .050/(1.27) ALLOWS FOR 2 POINTS OF ELECTRICAL CONTACT. A MAXIMUM TOLERANCE OF .020/(.51) ALLOWS FOR 4 POINTS OF CONTACT.
 7. THIS CONNECTOR ALLOWS FOR .050/(1.27) MAX. MISALIGNMENT IN ANY DIRECTION.
 8. CONNECTOR ASSEMBLIES ARE NOT TO BE MATED OR UNMATED WHILE CIRCUITS ARE LIVE.
 9. THIS PART IS INTENDED FOR ONE PANEL INSERTION ONLY. REMOVAL AND RE-INSERTION CAN DAMAGE THE MOUNTING SPIRALS.
 10. PANEL SHOULD BE PUNCHED IN THE DIRECTION OF CONNECTOR INSERTION.
 11. BOTH SPIRALS SHOULD BE INSERTED INTO THE PANEL AT THE SAME TIME. ROCKING THE PART INTO PLACE MAY CAUSE SPIRAL DAMAGE.
 12. IF THIS PRODUCT IS STORED IN AN ENVIRONMENT WITH A RELATIVE HUMIDITY OF LESS THAN 50%, MOISTURE MUST BE ADDED. REFER TO TECHNICAL ADVISORY AS-45499-002 FOR INSTRUCTIONS.
 13. PART IS FOR USE WITH 5556 OR 44476 SERIES TERMINALS.
 14. THIS DIMENSION TO BE USED FOR ALIGNMENT OF THE MATING CONNECTOR.
 15. PART MAY OR MAY NOT HAVE OPTIONAL RIBS.
 16. THIS PART IS NOT INTENDED TO PROVIDE ANY ALIGNMENT OF CUSTOMER COMPONENTS OR MODULES, SUCH AS POWER SUPPLIES AND CHASSIS.
 17. WIRES ARE TO BE DRESSED IN SUCH A MANNER TO ALLOW THE TERMINALS TO FLOAT FREELY IN THE POCKET.
 18. THIS PART CONFORMS TO CLASS B REQUIREMENTS OF COSMETIC SPECIFICATION PS-45499-002.

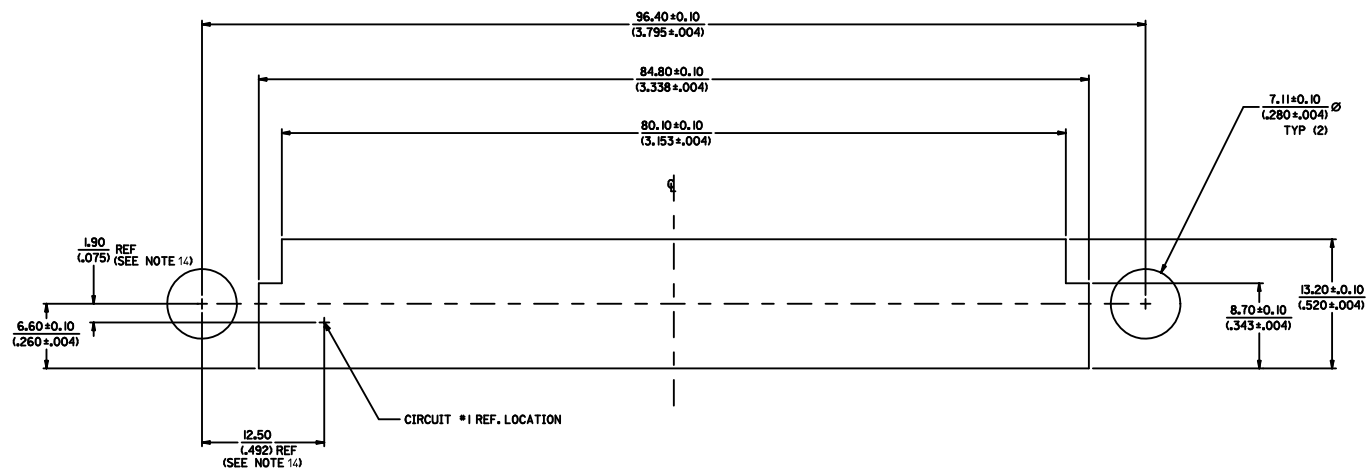
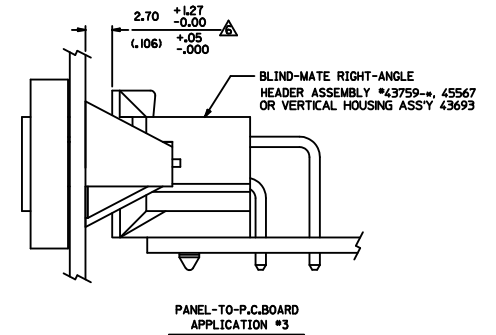
UPDATE HSG NOTE EC NO: UCP2012-2787 DRAWN: NGUYEN 2012/02/24 CHKD: BELL 2012/02/24 APPR: FSMITH 2012/05/04 REV D1	QUALITY SYMBOLS ▽=0 ▽=0 ▽=0	DESCRIPTION	GENERAL TOLERANCES (UNLESS SPECIFIED)		DIMENSION STYLE		SCALE	DESIGN UNITS	 THIRD ANGLE PROJECTION
					MM/IN		4:1	METRIC	
					DRAWN BY	DATE	PANEL-MOUNT RECEPTACLE 36-CIRCUIT BLIND MATE MINI-FIT SERIES  MOLEX INCORPORATED		
					CHECKED BY	DATE			
					APPROVED BY	DATE			
					MATERIAL NO.	DOCUMENT NO.			
mm		INCH	MANLAPAZ	06/18/97	SD-43760-001		1 OF 2		
4 PLACES ± .015		3 PLACES ± .015	MBANDURA		06/18/97				
2 PLACES ± 0.38		1 PLACE ± .015	FSMITH		2012/05/04				
ANGULAR ±1/2°		DRAFT WHERE APPLICABLE MUST REMAIN WITHIN DIMENSIONS		SIZE D		THIS DRAWING CONTAINS INFORMATION THAT IS PROPRIETARY TO MOLEX INCORPORATED AND SHOULD NOT BE USED WITHOUT WRITTEN PERMISSION			



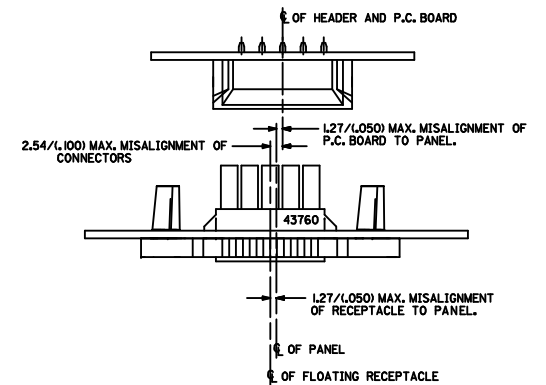
SECTION "Z-Z"
TERMINAL ORIENTATION





PANEL-TO-P.C. BOARD
APPLICATION #2



RECOMMENDED PANEL CUT-OUT FOR .127(+0.30/-0.050)+.012 THICK PANEL



ALIGNMENT TOLERANCES FOR .127(+0.30/-0.050)+.012 THICK PANEL
(±.127(+0.30/-0.050)+.012 RECEPTACLE FLOAT)

SEE SHEET 1 EC NO: UCP2012-2787 DRAWN BY: CHYD:JELL CHECKED BY: APPR:FSM TH REV: D1	DESCRIPTION	QUALITY SYMBOLS ▽=0 ▽=0 ▽=0	GENERAL TOLERANCES (UNLESS SPECIFIED)		DIMENSION STYLE MM/IN		SCALE 4:1	DESIGN UNITS METRIC	 THIRD ANGLE PROJECTION	
			4 PLACES ± ---	± ---	mm	INCH	DRAWN BY MANLAPAZ	DATE 06/18/97		TITLE PANEL-MOUNT RECEPTACLE 36-CIRCUIT BLIND MATE MINI-FIT SERIES  MOLEX INCORPORATED
			3 PLACES ± ---	± .015			CHECKED BY MBANDURA	DATE 06/18/97		
			2 PLACES ± 0.38	± ---			APPROVED BY FSM TH	DATE 2012/05/04		
			1 PLACE ± ---	± ---						
			ANGULAR ± 1/2°		MATERIAL NO. 43760-0001	DOCUMENT NO. SD-43760-001	SHEET NO. 2 OF 2			
DRAFT WHERE APPLICABLE MUST REMAIN WITHIN DIMENSIONS		SIZE D	THIS DRAWING CONTAINS INFORMATION THAT IS PROPRIETARY TO MOLEX INCORPORATED AND SHOULD NOT BE USED WITHOUT WRITTEN PERMISSION							