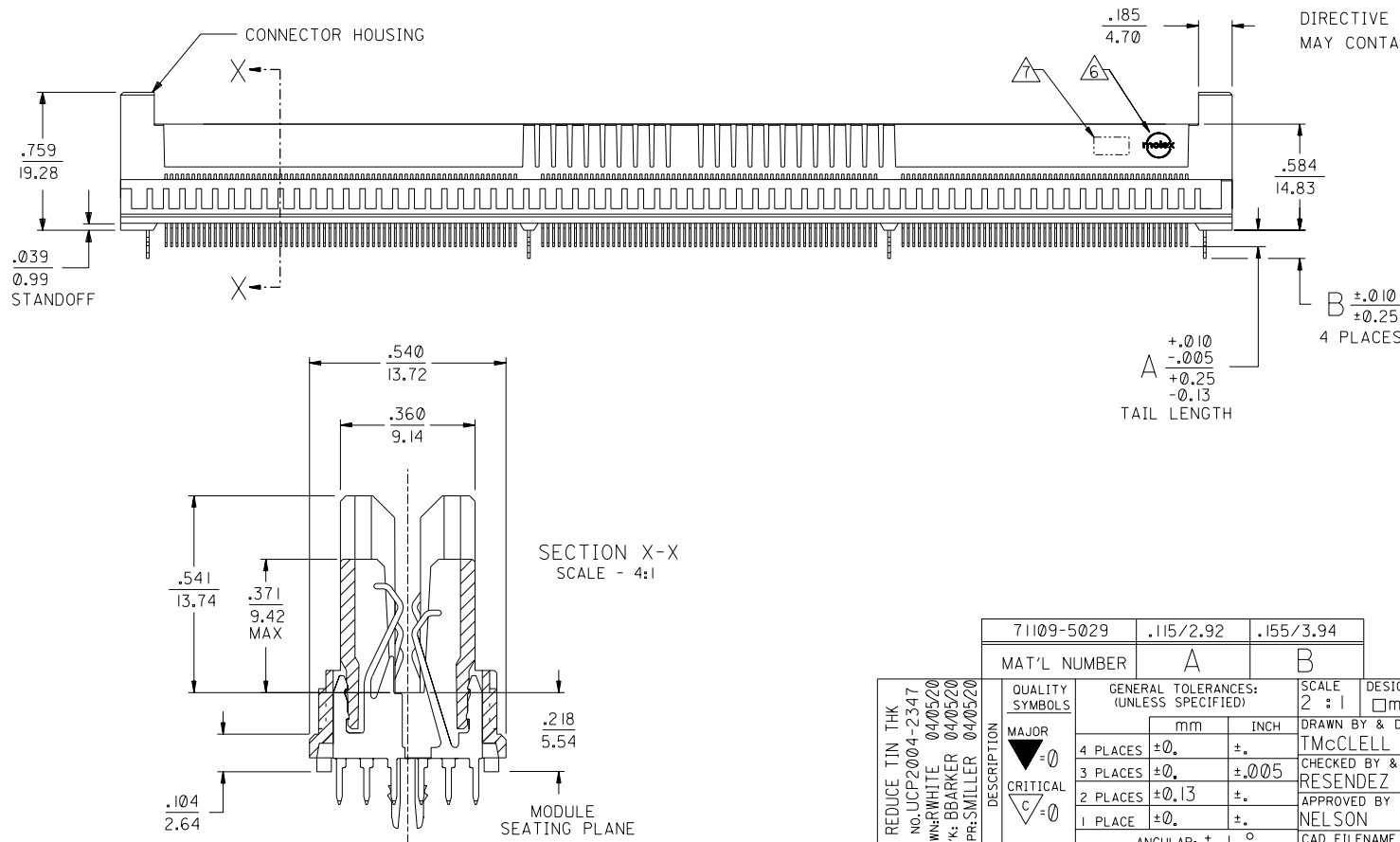
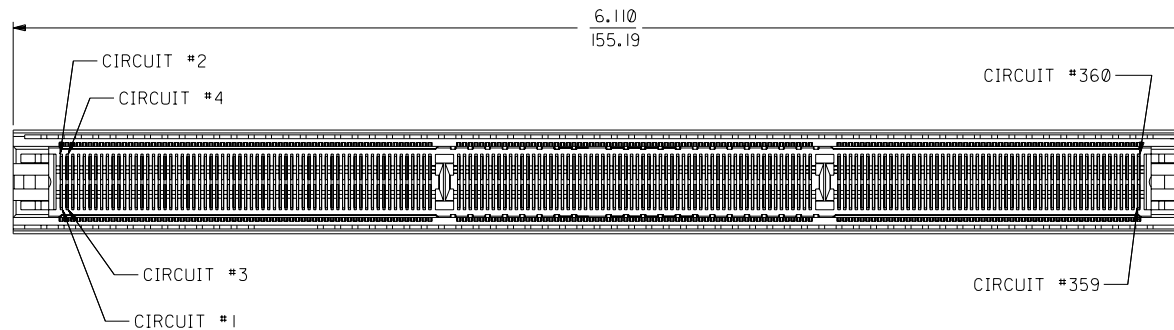


NOTES:

1. MATERIALS:
HOUSING - LCP, 30% GLASS FILLED, 94-V0, BLACK.
TERMINALS - PHOSPHOR BRONZE.
METAL FORKLLOCKS - PHOSPHOR BRONZE.
2. FINISH:
TERMINALS - .000030/0.00076 MINIMUM GOLD IN THE CONTACT AREA AND .000075/0.0019 MINIMUM TIN IN SOLDER TAIL AREA OVER .000050/0.0013 MINIMUM NICKEL OVERALL.
METAL FORKLLOCKS - .00008/0.002 MINIMUM TIN OVERALL.
3. PRODUCT SPECIFICATION PS-71109-9999 APPLIES.
4. CARD SLOT ACCEPTS .062 +.007/-.005 P.C. BOARD.
5. THE RECOMMENDED PLATING SPECIFICATION FOR THE MATING PC BOARD IS .000030/0.0076 MINIMUM GOLD OVER .000075/0.0019 MINIMUM NICKEL.
6. MOLEX LOGO SHALL APPEAR ON BOTH SIDES OF HOUSING AND LOCATED APPROXIMATELY AS SHOWN.
7. FOUR DIGIT DATE CODE (YR/WK) SHALL BE LOCATED APPROXIMATELY AS SHOWN.
8. THE PRIMARY SHIPPING CARTON WILL BE LABELED *COMPLIANT TO ROHS DIRECTIVE 2002/95/EC AND ELV ANNEX II OF DIRECTIVE 2000/53/EC*. CARTONS WITHOUT THIS LABEL MAY CONTAIN PRODUCT WITH LEAD.



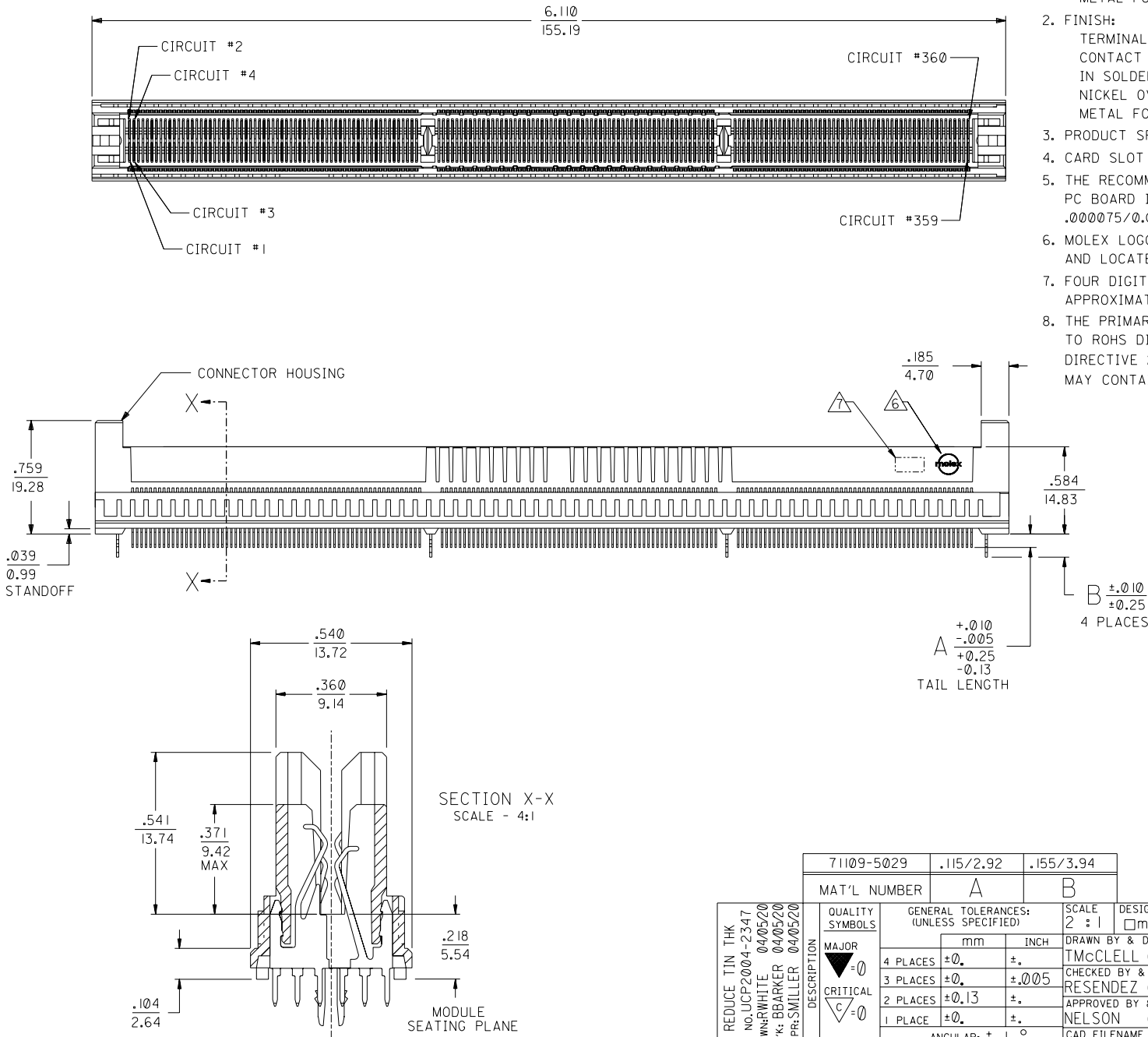
71109-5029		.115/2.92		.155/3.94	
MAT'L NUMBER		A		B	
REDUCE TIN THK EC NO:UCP2004-2347 DRWN:RWHT 04/05/20 CHK: BBARKER 04/05/20 APPR:SMILLER 04/05/20	QUALITY SYMBOLS	GENERAL TOLERANCES: (UNLESS SPECIFIED)		SCALE 2 : 1	DESIGN UNITS <input type="checkbox"/> mm <input checked="" type="checkbox"/> INCH
	MAJOR	mm		INCH	DRAWN BY & DATE
	CRITICAL	mm		INCH	CHECKED BY & DATE
	CRITICAL	mm		INCH	APPROVED BY & DATE
	CRITICAL	mm		INCH	CAD FILENAME
REV	DESCRIPTION	DRAFT WHERE APPLICABLE MUST REMAIN WITHIN DIMENSIONS		WORKMANAGER	MATERIAL NO. SEE CHART
				THIS DRAWING CONTAINS INFORMATION THAT IS PROPRIETARY TO MOLEX INCORPORATED AND SHOULD NOT BE USED WITHOUT WRITTEN PERMISSION.	SHEET NO. 1 OF 2

DIMENSIONS:		2	B
		1	E
		SHT	REV
		REVISE ON CAD ONLY	

TITLE: SALES ASSEMBLY	
360 CKT "HiSpec" CONNECTOR	
W/METAL FORKLLOCKS	
MOLEX INCORPORATED	
CAD FILENAME	DRAWING NO.
WORKMANAGER	SD-71109-511
MATERIAL NO.	SHEET NO.
SEE CHART	1 OF 2

NOTES:

1. MATERIALS:
HOUSING - LCP, 30% GLASS FILLED, 94-V0, BLACK.
TERMINALS - PHOSPHOR BRONZE.
METAL FORKLOCKS - PHOSPHOR BRONZE.
2. FINISH:
TERMINALS - .000030/0.00076 MINIMUM GOLD IN THE CONTACT AREA AND .000075/0.0019 MINIMUM TIN IN SOLDER TAIL AREA OVER .000050/0.0013 MINIMUM NICKEL OVERALL.
METAL FORKLOCKS - .00008/0.002 MINIMUM TIN OVERALL.
3. PRODUCT SPECIFICATION PS-71109-9999 APPLIES.
4. CARD SLOT ACCEPTS .062 +.007/-.005 P.C. BOARD.
5. THE RECOMMENDED PLATING SPECIFICATION FOR THE MATING PC BOARD IS .000030/0.0076 MINIMUM GOLD OVER .000075/0.0019 MINIMUM NICKEL.
6. MOLEX LOGO SHALL APPEAR ON BOTH SIDES OF HOUSING AND LOCATED APPROXIMATELY AS SHOWN.
7. FOUR DIGIT DATE CODE (YR/WK) SHALL BE LOCATED APPROXIMATELY AS SHOWN.
8. THE PRIMARY SHIPPING CARTON WILL BE LABELED "COMPLIANT TO ROHS DIRECTIVE 2002/95/EC AND ELV ANNEX II OF DIRECTIVE 2000/53/EC". CARTONS WITHOUT THIS LABEL MAY CONTAIN PRODUCT WITH LEAD.



71109-5029		.115/2.92	.155/3.94			2	B					
				MAT'L NUMBER		A	B					
REDUCE TIN THK EC NO:UCP2004-2347 DRAWN:WHITE 04/05/20 CHK: BBARKER 04/05/20 APPR:SWILLER 04/05/20 F	DESCRIPTION MAJOR CRITICAL C	GENERAL TOLERANCES: (UNLESS SPECIFIED)		SCALE 2 : 1	DESIGN UNITS <input type="checkbox"/> mm <input checked="" type="checkbox"/> INCH	DIMENSIONS: <input type="checkbox"/> mm INCH <input checked="" type="checkbox"/> mm mm ONLY		SHT	REV			
						THIRD ANGLE PROJECTION		REVISE ON CAD ONLY				
				DRAWN BY & DATE TMCLELL 08/14/98		TITLE: SALES ASSEMBLY 360 CKT "HiSpec" CONNECTOR W/METAL FORKLOCKS						
				CHECKED BY & DATE RESENDEZ 08/14/98								
				APPROVED BY & DATE NELSON 08/14/98								
						CAD FILENAME WORKMANAGER		MATERIAL NO. SEE CHART		DRAWING NO. SD-71109-511		SHEET NO. 1 OF 2
												SIZE C
										</		

