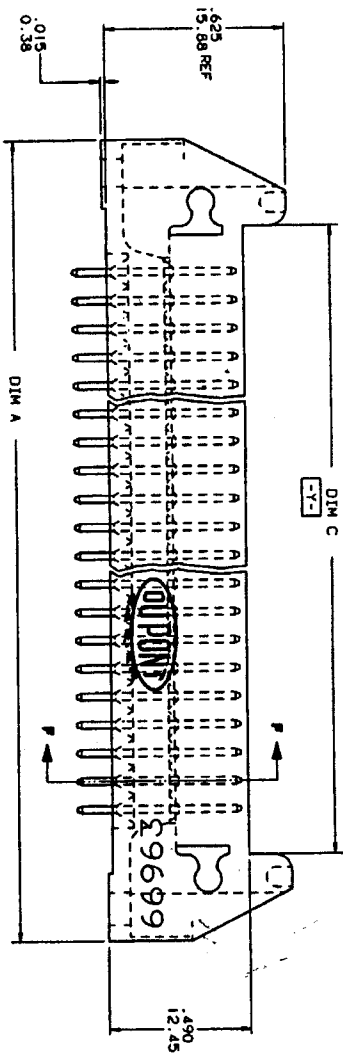
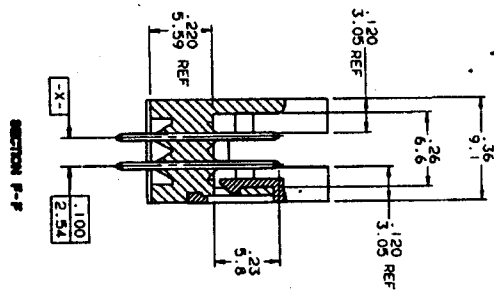




PRODUCT NO  
SEE TABLE



REV	DESCRIPTION	BY	DATE
K			

SHEET NO		ISSUE	CUSTOMER COPY	
MODEL		DO NOT SCALE	CODE IDENT	
TOLERANCE UNITS		INCHES	22936	
DECIMALS		0.001		
FRACTIONS		1/32		
FURNISH		DATE		
DRAWN		DATE		
CHECKED		DATE		
APPROVED		DATE		
SCALE		SIZE	SHEET	
5/1		D	2	

www.fccompany.com

HEADERS, OUTLINE, SEALED, VERTICAL

PRODUCT NO  
SEE TABLE

REV K

DESCRIPTION

DATE

1

2

3

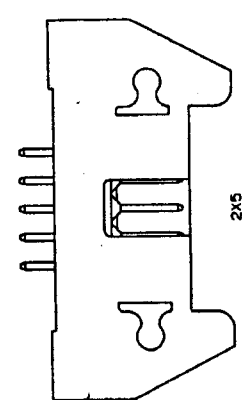
4

5

6

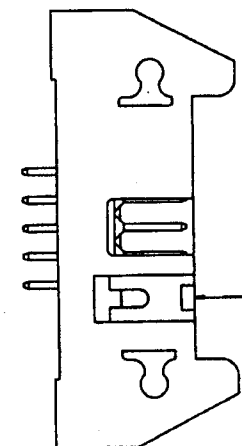
7

8



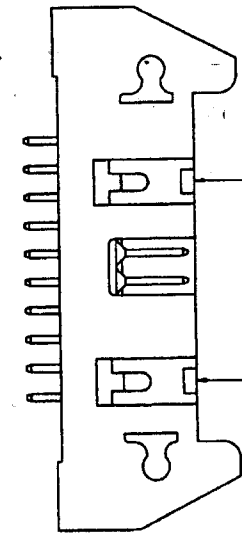
2x5  
STYLE A

KEY POSITION K



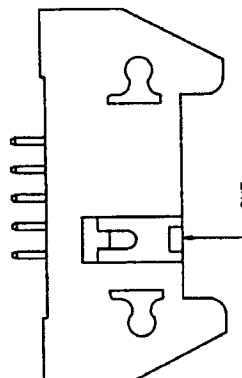
2x7  
STYLE C

KEY POSITION K



2x8 THRU 2x30  
(2x10 SHOWN)  
STYLE D

KEY POSITION K



2x5  
STYLE B

KEY POSITION K

**NOTES:**

- MOLDING MAT'L: 30% GLASS FILLED POLYESTER, FLAME RETARDANT PER UL-94V-0, COLOR: BLUE.
- 1" MAX DRAFT PERMISSIBLE ON ALL SURFACES, UNLESS OTHERWISE SPECIFIED.
- BASIC DIM SHALL BE LOCATED SYMMETRICAL TO DATUM -Y-.
- LOGO LOCATION TO BE OPTIONAL.
- PIN MAT'L: 3/4 HARD PHOSPHOR BRONZE ALLOY UNS C-51000.
- PLATING ON LEAD-IN PORTION OF PIN IS MANUFACTURING OPTION.
- RECOMMENDED MOUNTING SCREW SIZE: #2-56 FILLISTER HEAD MACHINE SCREW, 1/4" LONG FOR 1/16" AND 3/32" BOARD, 3/16" LONG FOR 1/8" BOARD.
- 4LBS/1.8KG MIN PIN RETENTION IN BOTH DIRECTIONS.
- L.P. LATCHES TO BE USED WITH FEMALE CONNECTOR WITHOUT STRAIN RELIEF STANDARD LATCHES TO BE USED WITH FEMALE CONNECTOR WITH STRAIN RELIEF.
- ONE KEY INSTALLED ON 2x5 & 2x7 SIZES, TWO KEYS INSTALLED ON 2x8 THRU 2x30 SIZES.
- ONE KEY INSTALLED IN POSITION "K" FOR -391 ONLY.
- ONE KEY INSTALLED IN POSITION "L" FOR -392 ONLY.
- MOLDED-IN KEYS ARE MANUFACTURER'S OPTION.
- HEADERS WITH INSTALLED POLARIZING KEYS THAT ARE MADE FROM 65863 HEADERS AND 66423 POLARIZING KEY-THOSE HEADERS WILL EXHIBIT THE 65863 P/N ON THE HEADER ASS'Y. (EXAMPLE: 65863-355 WITH 66423-001 WILL = 66963-359).

15. ADD "LF" SUFFIX AT THE END OF PART NUMBER FOR LEAD FREE OPTION.

16. IF "LF" P/N THE PRODUCT MEETS EUROPEAN UNION DIRECTIVES AND OTHER COUNTRY REGULATION AS DESCRIBED IN GS-22-008.

17. THE HOUSING WILL WITHSTAND EXPOSURE TO 260° PEAK TEMPERATURE FOR 15 SECONDS IN A WAVE SOLDER PROCESS.

CUSTOMER COPY

CODE IDENT

DATE

TITLE

22526

9/19/90

9/19/90

HEADER QUICKIE SEA-HORSE VERTICAL

DR M. CORNUMAN

DR M. SHYK

DR M. SHYK

DR M. SHYK

SCALE

SIZE

NO

SHEET

1

1

1

1

ISSUE

NO

DATE

DESCRIPTION

1

1

1

1

1

1

1

1

1

1

1

1

1

1

1

1

1

1

1

1

1

1

1

1

1

1

1

1

1

1

1

1

1

1

1

1

1

1

1

1

1

1

1

1

1

1

1

1

1

1

1

1

1

1

1

1

1

1

1

1

1

1

1

1

1

1

1

1

1

1

1

1

1

1

1

1

1

1

1

1

1

1

1

1

1

1

1

1

1

1

1

1

1

1

1

1

1

1

1

1

1

1

1

1

1

1

1

1

1

1

1

1

1

1

1

1

1

1

1

1

1

1

1

1

1

1

1

1

1

1

1

1

1

1

1

1

1

1

1

1

1

1

1

1

1

1

1

1

1

1

1

1

1

1

1

1

1

1

1

1

1

1

1

1

1

1

1

1

1

1

1

1

1

1

1

1

1

1

1

1

1

1

1

1

1

1

1

1

1

1

1

1

1

1

1

1

1

1

1

1

1

1

1

1

1

1

1

1

1

1

1

1

1

1

1

1

1

1

1

1

1

1

1

1

1

1

1

1

1

1

1

1

1

1

1

1

1

1

1

1

1

1

1

1

1

1

1

1

1

1

1

1

1

1

1

1

1

1

1

1

1

1

1

1

1

1

1

1

1

1

1

1

1

1

1

1

1

1

1

1

1

1

1

1

1

1

1

1

1

1

1

1

1

1

1

1

1

1

1

1

1

1

1

1

1

1

1

1

1

1

1

1

1

1

1

1

1

1

1

1

1

1

1

1

1

1

1

1

1

1

1

1

1

1

1

1

1

1

1

1

1

1

1

1

1

1

1

1

1

1

1

1

1

1

1

1

1

1

1

1

1

1

1

1

1

1

1

1

1

1

1

1

1

1

1

1

PRODUCT NO		SIZE	LATCH NOTE	PIN SHAPE	DIM A	DIM B	DIM C	DIM D ±.010 ±.025	DIM E	TERMINAL PLATING	STYLE
66963-001		2x5	NO	RND	1.330/33.78	.400/10.16	.720/18.29	.105/ 2.67	1.100/27.94	30u"/.76u Au OVER 50u"/.27u Ni	A
-002				SQ				.105/ 2.67		150u"/3.81u TiN	
-003				RND				.150/ 3.81		30u"/.76u Au OVER 50u"/.27u Ni	
-004				SQ				.150/ 3.81		150u"/3.81u TiN	
-005				SQ				.675/17.15		30u"/.76u Au OVER 50u"/.27u Ni	
-006		2x5		SQ	1.330/33.78	.400/10.16	.720/18.29	.675/17.15	1.100/27.94	150u"/3.81u TiN	A
-007		2x7		RND	1.530/38.86	.600/15.24	.920/23.37	.105/ 2.67	1.300/33.02	30u"/.76u Au OVER 50u"/.27u Ni	C
-008				SQ				.105/ 2.67		150u"/3.81u TiN	
-009				RND				.150/ 3.81		30u"/.76u Au OVER 50u"/.27u Ni	
-010				SQ				.150/ 3.81		150u"/3.81u TiN	
-011				SQ				.675/17.15		30u"/.76u Au OVER 50u"/.27u Ni	
-012		2x7		SQ	1.530/38.86	.600/15.24	.920/23.37	.675/17.15	1.300/33.02	150u"/3.81u TiN	C
-013		2x8		RND	1.630/41.40	.700/17.78	1.020/25.91	.105/ 2.67	1.400/35.56	30u"/.76u Au OVER 50u"/.27u Ni	D
-014				SQ				.105/ 2.67		150u"/3.81u TiN	
-015				RND				.150/ 3.81		30u"/.76u Au OVER 50u"/.27u Ni	
-016				SQ				.150/ 3.81		150u"/3.81u TiN	
-017				SQ				.675/17.15		30u"/.76u Au OVER 50u"/.27u Ni	
-018		2x8		SQ	1.630/41.40	.700/17.78	1.020/25.91	.675/17.15	1.400/35.56	150u"/3.81u TiN	
-019		2x10		RND	1.830/46.48	.900/22.86	1.220/30.99	.105/ 2.67	1.600/40.64	30u"/.76u Au OVER 50u"/.27u Ni	
-020				SQ				.105/ 2.67		150u"/3.81u TiN	
-021				RND				.150/ 3.81		30u"/.76u Au OVER 50u"/.27u Ni	
-022				SQ				.150/ 3.81		150u"/3.81u TiN	
-023				SQ				.675/17.15		30u"/.76u Au OVER 50u"/.27u Ni	
-024		2x10		SQ	1.830/46.48	.900/22.86	1.220/30.99	.675/17.15	1.600/40.64	150u"/3.81u TiN	
-025		2x13		RND	2.130/54.10	1.200/30.48	1.520/38.61	.105/ 2.67	1.900/48.26	30u"/.76u Au OVER 50u"/.27u Ni	
-026				SQ				.105/ 2.67		150u"/3.81u TiN	
-027				RND				.150/ 3.81		30u"/.76u Au OVER 50u"/.27u Ni	
-028				SQ				.150/ 3.81		150u"/3.81u TiN	
-029				SQ				.675/17.15		30u"/.76u Au OVER 50u"/.27u Ni	
-030		2x13		SQ	2.130/54.10	1.200/30.48	1.520/38.61	.675/17.15	1.900/48.26	150u"/3.81u TiN	
-031		2x17		RND	2.530/64.26	1.600/40.64	1.920/48.77	.105/ 2.67	2.300/58.42	30u"/.76u Au OVER 50u"/.27u Ni	
-032				SQ				.105/ 2.67		150u"/3.81u TiN	
-033				RND				.150/ 3.81		30u"/.76u Au OVER 50u"/.27u Ni	
-034				SQ				.150/ 3.81		150u"/3.81u TiN	
-035				SQ				.675/17.15		30u"/.76u Au OVER 50u"/.27u Ni	
66963-036		2x17	NO	SQ	2.530/64.26	1.600/40.64	1.920/48.77	.675/17.15	2.300/58.42	150u"/3.81u TiN	D

CUSTOMER COPY		DATE	BY	DATE
10/19/90		10/19/90		
10/19/90		10/19/90		
10/19/90		10/19/90		
10/19/90		10/19/90		
10/19/90		10/19/90		
10/19/90		10/19/90		
10/19/90		10/19/90		
10/19/90		10/19/90		
10/19/90		10/19/90		
10/19/90		10/19/90		
10/19/90		10/19/90		
10/19/90		10/19/90		
10/19/90		10/19/90		
10/19/90		10/19/90		
10/19/90		10/19/90		
10/19/90		10/19/90		
10/19/90		10/19/90		
10/19/90		10/19/90		
10/19/90		10/19/90		
10/19/90		10/19/90		
10/19/90		10/19/90		
10/19/90		10/19/90		
10/19/90		10/19/90		
10/19/90		10/19/90		
10/19/90		10/19/90		
10/19/90		10/19/90		
10/19/90		10/19/90		
10/19/90		10/19/90		
10/19/90		10/19/90		
10/19/90		10/19/90		
10/19/90		10/19/90		
10/19/90		10/19/90		
10/19/90		10/19/90		
10/19/90		10/19/90		
10/19/90		10/19/90		
10/19/90		10/19/90		
10/19/90		10/19/90		
10/19/90		10/19/90		
10/19/90		10/19/90		
10/19/90		10/19/90		
10/19/90		10/19/90		
10/19/90		10/19/90		
10/19/90		10/19/90		
10/19/90		10/19/90		
10/19/90		10/19/90		
10/19/90		10/19/90		
10/19/90		10/19/90		
10/19/90		10/19/90		
10/19/90		10/19/90		
10/19/90		10/19/90		
10/19/90		10/19/90		
10/19/90		10/19/90		
10/19/90		10/19/90		
10/19/90		10/19/90		
10/19/90		10/19/90		
10/19/90		10/19/90		
10/19/90		10/19/90		
10/19/90		10/19/90		
10/19/90		10/19/90		
10/19/90		10/19/90		
10/19/90		10/19/90		
10/19/90		10/19/90		
10/19/90		10/19/90		
10/19/90		10/19/90		
10/19/90		10/19/90		
10/19/90		10/19/90		
10/19/90		10/19/90		
10/19/90		10/19/90		
10/19/90		10/19/90		
10/19/90		10/19/90		
10/19/90		10/19/90		
10/19/90		10/19/90		
10/19/90		10/19/90		
10/19/90		10/19/90		
10/19/90		10/19/90		
10/19/90		10/19/90		
10/19/90		10/19/90		
10/19/90		10/19/90		
10/19/90		10/19/90		
10/19/90		10/19/90		

PRODUCT NO	SIZE	LATCH	PIN	DIM A	DIM B	DIM C	DIM D : .010	DIM E	TERMINAL PLATING	STYLE
66963-037	2x20	NO	RND	2.830/71.88	1.900/48.26	2.220/56.39	.105/ 2.67	2.600/66.04	30u"/.76u Au OVER 50u"/.1.27u NI	D
-038			SD				.105/ 2.67		150u"/.3.81u TIN	
-039			RND				.150/ 3.81		30u"/.76u Au OVER 50u"/.1.27u NI	
-040			SD				.150/ 3.81		150u"/.3.81u TIN	
-041			SD				.675/17.15		30u"/.76u Au OVER 50u"/.1.27u NI	
-042	2x20		SD	2.830/71.88	1.900/48.26	2.220/56.39	.675/17.15	2.600/66.04	150u"/.3.81u TIN	
-043	2x25		RND	3.330/84.58	2.400/60.96	2.720/69.09	.105/ 2.67	3.100/78.74	30u"/.76u Au OVER 50u"/.1.27u NI	
-044			SD				.105/ 2.67		150u"/.3.81u TIN	
-045			RND				.150/ 3.81		30u"/.76u Au OVER 50u"/.1.27u NI	
-046			SD				.675/17.15		150u"/.3.81u TIN	
-047			SD				.675/17.15		30u"/.76u Au OVER 50u"/.1.27u NI	
-048	2x25	NO	SD	3.330/84.58	2.400/60.96	2.720/69.09	.675/17.15	3.100/78.74	150u"/.3.81u TIN	D
-049	2x5	STD	RND	1.330/33.78	.400/10.16	.720/18.29	.105/ 2.67	1.100/27.94	30u"/.76u Au OVER 50u"/.1.27u NI	A
-050			SD				.105/ 2.67		150u"/.3.81u TIN	
-051			RND				.150/ 3.81		30u"/.76u Au OVER 50u"/.1.27u NI	
-052			SD				.675/17.15		150u"/.3.81u TIN	
-053			SD				.675/17.15		30u"/.76u Au OVER 50u"/.1.27u NI	A
-054	2x5		SD	1.330/33.78	.400/10.16	.720/18.29	.675/17.15	1.100/27.94	150u"/.3.81u TIN	C
-055	2x7		RND	1.530/38.86	.600/15.24	.920/23.37	.105/ 2.67	1.300/33.02	30u"/.76u Au OVER 50u"/.1.27u NI	
-056			SD				.105/ 2.67		150u"/.3.81u TIN	
-057			RND				.150/ 3.81		30u"/.76u Au OVER 50u"/.1.27u NI	
-058			SD				.675/17.15		150u"/.3.81u TIN	
-059			SD				.675/17.15		30u"/.76u Au OVER 50u"/.1.27u NI	C
-060	2x7		SD	1.530/38.86	.600/15.24	.920/23.37	.105/ 2.67	1.300/33.02	150u"/.3.81u TIN	D
-061	2x8		RND	1.630/41.40	.700/17.78	1.020/25.91	.105/ 2.67	1.400/35.56	30u"/.76u Au OVER 50u"/.1.27u NI	
-062			SD				.105/ 2.67		150u"/.3.81u TIN	
-063			RND				.150/ 3.81		30u"/.76u Au OVER 50u"/.1.27u NI	
-064			SD				.675/17.15		150u"/.3.81u TIN	
-065			SD				.675/17.15		30u"/.76u Au OVER 50u"/.1.27u NI	
-066	2x8		SD	1.630/41.40	.700/17.78	1.020/25.91	.675/17.15	1.400/35.56	150u"/.3.81u TIN	
-067	2x10		RND	1.830/46.48	.900/22.86	1.220/30.99	.105/ 2.67	1.600/40.64	30u"/.76u Au OVER 50u"/.1.27u NI	
-068			SD				.105/ 2.67		150u"/.3.81u TIN	
-069			RND				.150/ 3.81		30u"/.76u Au OVER 50u"/.1.27u NI	
-070			SD				.675/17.15		150u"/.3.81u TIN	
-071			SD				.675/17.15		30u"/.76u Au OVER 50u"/.1.27u NI	
66963-072	2x10	STD	SD	1.830/46.48	.900/22.86	1.220/30.99	.675/17.15	1.600/40.64	150u"/.3.81u TIN	D

REV	DESCRIPTION	BY	DATE
K			

CUSTOMER	DATE	DATE	DATE
CPY	22034	9/19/00	9/19/00

FILE	DATE	DATE	DATE
SEA-HORSE VERTICAL	9/19/00	9/19/00	9/19/00

DATE	DATE	DATE	DATE
5/1	66963	5/1	5



PRODUCT NO 66963-109	SIZE 2x5	LATCH NOTE 9	P/N SHAPE 50	DIM A	DIM B	DIM C	DIM D ±.25	DIM E	TERMINAL PLATING 30μ"/.76μ Au OVER 50μ"/1.27μ Ni	STYLE A	REV K	REVISIONS		DATE
												DESCRIPTION	BY	
-110	2x7			1.330/33.78	.400/10.16	.720/18.29	.105/ 2.67	1.100/27.94		A				
-111	2x8			1.530/38.86	.600/15.24	.920/23.37		1.300/33.02		C				
-112	2x10			1.630/41.40	.700/17.78	1.020/25.91		1.400/35.56		D				
-113	2x13			1.830/46.48	.900/22.86	1.220/30.99		1.600/40.64						
-114	2x17			2.130/54.10	1.200/30.48	1.520/38.61		1.900/48.26						
-115	2x20			2.530/64.26	1.600/40.64	1.920/48.77		2.300/58.42						
-116	2x25			2.830/71.88	1.900/48.26	2.220/56.39		2.600/66.04						
-117	2x30			3.330/84.58	2.400/60.96	2.720/69.09		3.100/78.74		D				
-118	2x35			3.830/97.28	2.900/73.66	3.220/81.79		3.600/91.44		A				
-119	2x40			4.330/110.16	3.400/86.11	3.720/94.17		4.100/104.14		C				
-120	2x45			4.830/123.02	3.900/99.06	4.220/107.15		4.600/116.12		D				
-121	2x50			5.330/135.88	4.400/111.94	4.720/120.02		5.100/129.00						
-122	2x55			5.830/148.74	4.900/124.82	5.220/133.02		5.600/141.88						
-123	2x60			6.330/161.60	5.400/137.70	5.720/145.94		6.100/154.94						
-124	2x65			6.830/174.46	5.900/150.58	6.220/158.82		6.600/167.00						
-125	2x70			7.330/187.32	6.400/163.46	6.720/171.70		7.100/180.00						
-126	2x75			7.830/199.18	6.900/176.34	7.220/184.58		7.600/192.88						
-127	2x80			8.330/212.04	7.400/189.22	7.720/197.46		8.100/205.82						
-128	2x85			8.830/224.90	7.900/202.10	8.220/210.34		8.600/218.70						
-129	2x90			9.330/237.76	8.400/214.98	8.720/223.22		9.100/231.58						
-130	2x95			9.830/250.62	8.900/227.86	9.220/236.10		9.600/244.46						
-131	2x100			10.330/263.48	9.400/240.74	9.720/249.02		10.100/257.34						
-132	2x105			10.830/276.34	9.900/253.62	10.220/261.90		10.600/269.78						
-133	2x110			11.330/289.20	10.400/266.50	10.720/274.78		11.100/282.66						
-134	2x115			11.830/302.06	10.900/279.38	11.220/287.66		11.600/295.54						
-135	2x120			12.330/314.92	11.400/292.26	11.720/299.54		12.100/307.42						
-136	2x125			12.830/327.78	11.900/305.14	12.220/312.42		12.600/319.30						
-137	2x130			13.330/340.64	12.400/318.02	12.720/325.30		13.100/331.18						
-138	2x135			13.830/353.50	12.900/330.90	13.220/338.18		13.600/343.06						
-139	2x140			14.330/366.36	13.400/343.78	13.720/351.06		14.100/354.94						
-140	2x145			14.830/379.22	13.900/356.66	14.220/363.94		14.600/367.82						
-141	2x150			15.330/392.08	14.400/369.54	14.720/376.82		15.100/379.70						
-142	2x155			15.830/404.94	14.900/382.42	15.220/389.70		15.600/391.58						
-143	2x160			16.330/417.80	15.400/395.30	15.720/402.58		16.100/404.46						
-144	2x165			16.830/430.66	15.900/408.18	16.220/415.46		16.600/417.34						
-145	2x170			17.330/443.52	16.400/421.06	16.720/428.34		17.100/430.22						
-146	2x175			17.830/456.38	16.900/433.94	17.220/441.22		17.600/443.10						
-147	2x180			18.330/469.24	17.400/446.82	17.720/454.10		18.100/455.98						
-148	2x185			18.830/482.10	17.900/459.70	18.220/466.98		18.600/467.86						
-149	2x190			19.330/494.96	18.400/472.58	18.720/479.86		19.100/479.74						
-150	2x195			19.830/507.82	18.900/485.46	19.220/492.74		19.600/491.62						
-151	2x200			20.330/520.68	19.400/498.34	19.720/505.62		20.100/503.50						
-152	2x205			20.830/533.54	19.900/511.22	20.220/518.50		20.600/516.38						
-153	2x210			21.330/546.40	20.400/524.10	20.720/531.38		21.100/529.26						
-154	2x215			21.830/559.26	20.900/536.98	21.220/544.26		21.600/542.14						
-155	2x220			22.330/572.12	21.400/549.86	21.720/557.14		22.100/555.02						
-156	2x225			22.830/584.98	21.900/562.74	22.220/570.02		22.600/566.90						
-157	2x230			23.330/597.84	22.400/575.62	22.720/582.90		23.100/579.78						
-158	2x235			23.830/610.70	22.900/588.50	23.220/595.78		23.600/592.66						
-159	2x240			24.330/623.56	23.400/601.38	23.720/608.66		24.100/605.54						
-160	2x245			24.830/636.42	23.900/614.26	24.220/621.54		24.600/618.42						
-161	2x250			25.330/649.28	24.400/627.14	24.720/634.42		25.100/630.30						
-162	2x255			25.830/662.14	24.900/640.02	25.220/647.30		25.600/643.18						
-163	2x260			26.330/675.00	25.400/652.90	25.720/660.18		26.100/656.06						
-164	2x265			26.830/687.86	25.900/665.78	26.220/673.06		26.600/668.94						
-165	2x270			27.330/700.72	26.400/678.66	26.720/685.94		27.100/681.82						
-166	2x275			27.830/713.58	26.900/691.54	27.220/698.82		27.600/694.70						
-167	2x280			28.330/726.44	27.400/704.42	27.720/711.70		28.100/707.58						
-168	2x285			28.830/739.30	27.900/717.30	28.220/724.58		28.600/720.46						
-169	2x290			29.330/752.16	28.400/730.18	28.720/737.46		29.100/733.34						
-170	2x295			29.830/765.02	28.900/743.06	29.220/750.34		29.600/746.22						
-171	2x300			30.330/777.88	29.400/755.94	30.220/763.22		30.600/759.10						
-172	2x305			30.830/790.74	29.900/768.82	30.720/776.10		31.100/771.98						
-173	2x310			31.330/803.60	30.400/781.70	31.220/788.98		31.600/784.86						
-174	2x315			31.830/816.46	30.900/794.58	31.720/801.86		32.100/797.74						
-175	2x320			32.330/829.32	31.400/807.46	32.220/814.74		32.600/806.62						
-176	2x325			32.830/842.18	31.900/820.34	32.720/827.62		33.100/819.50						
-177	2x330			33.330/855.04	32.400/833.22	33.220/840.50		33.600/832.38						
-178	2x335			33.830/867.90	32.900/846.10	33.720/853.38		34.100/845.26						
-179	2x340			34.330/880.76	33.400/858.98	34.220/866.26		34.600/858.14						
-180	2x345			34.830/893.62	33.900/871.86	34.720/879.14		35.100/871.02						
-181	2x350			35.330/906.48	34.400/884.74	35.220/892.02		35.600/883.90						
-182	2x355			35.830/919.34	34.900/897.62	35.720/904.90		36.100/896.78						
-183	2x360			36.330/932.20	35.400/910.50	36.220/917.78		36.600/909.66						
-184	2x365			36.830/945.06	35.900/923.38	36.720/930.66		37.100/922.54						
-185	2x370			37.330/957.92	36.400/936.26	37.220/943.54		37.600/935.42						
-186	2x375			37.830/970.78	36.900/949.14	37.720/956.42		38.100/948.30						
-187	2x380			38.330/983.64	37.400/962.02	38.220/969.30		38.600/961.18						
-188	2x385			38.830/996.50	37.900/974.90	38.720/982.18		39.100/974.06						
-189	2x390			39.330/1009.36	38.400/987.78	39.220/995.06		39.600/986.94						
-190	2x395			39.830/1022.22	38.900/1000.66	39.720/1007.94		40.100/999.82						
-191	2x400			40.330/1035.08	39.400/1013.54	40.220/1020.82		40.600/1012.70						
-192	2x405			40.830/1047.94	39.900/1026.42	40.720/1033.70		41.100/1025.58						
-193	2x410			41.330/1060.80	40.400/1039.30	41.220/1046.58		41.600/1038.46						
-194	2x415			41.830/1073.66	40.900/1052.18	41.720/1059.46		42.100/1051.34						
-195	2x420			42.330/1086.52	41.400/1065.06	42.220/1072.34		42.600/1064.22						
-196	2x425			42.830/1099.38	41.900/1077.94	42.720/1085.22		43.100/1077.10						
-197	2x430			43.330/1112.24	42.400/1090.82	43.220/1098.10		43.600/1090.98						
-198	2x435			43.830/1125.10	42.900/1103.70	43.720/1110.98		44.100/1103.86						
-199	2x440			44.330/1137.96	43.400/1116.58	44.220/1123.86		44.600/1116.74						
-200	2x445			44.830/1150.82	43.900/1129.46	44.720/1136.74		45.100/1129.62						
-201	2x450			45.330/1163.68	44.400/1142.34	45.220/1149.62		45.						





Printed: Apr 12, 2011

PRODUCT NO	SIZE	LATCH NOTE	PIN SHAPE	DIM A	DIM B	DIM C	DIM D .010	DIM E	TERMINAL PLATING	STYLE
66963-253	2x20	NO	RND	2.830/71.88	1.900/48.26	2.220/56.39	.105/ 2.67	2.600/66.04	30u"/.76u CMT/GOLD FLASH	D
-254	2x25		RND	3.330/84.58	2.400/60.96	2.720/69.09	.105/ 2.67	3.100/78.74		D
-255	2x30		RND	3.830/97.28	2.900/73.66	3.220/81.79	.105/ 2.67	3.600/91.44		D
-256	2x35		SO	1.330/33.78	.400/10.16	.720/18.29	.675/17.15	1.100/27.94		A
-257	2x7			1.530/38.86	.600/15.24	.920/23.37		1.300/33.02		C
-258	2x8			1.630/41.40	.700/17.78	1.020/25.91		1.400/35.56		D
-259	2x10			1.830/46.48	.900/22.86	1.220/30.99		1.600/40.64		
-260	2x13			2.130/54.10	1.200/30.48	1.520/38.61		1.900/48.26		
-261	2x17			2.530/64.26	1.600/40.64	1.920/48.77		2.300/58.42		
-262	2x20			2.830/71.88	1.900/48.26	2.220/56.39		2.600/66.04		
-263	2x25			3.330/84.58	2.400/60.96	2.720/69.09		3.100/78.74		
-264	2x30	NO	SO	3.830/97.28	2.900/73.66	3.220/81.79	.675/17.15	3.600/91.44		D
-265	2x35	STD	RND	1.330/33.78	.400/10.16	.720/18.29	.105/ 2.67	1.100/27.94		A
-266	2x7			1.530/38.86	.600/15.24	.920/23.37		1.300/33.02		C
-267	2x8			1.630/41.40	.700/17.78	1.020/25.91		1.400/35.56		D
-268	2x10			1.830/46.48	.900/22.86	1.220/30.99		1.600/40.64		
-269	2x13			2.130/54.10	1.200/30.48	1.520/38.61		1.900/48.26		
-270	2x17			2.530/64.26	1.600/40.64	1.920/48.77		2.300/58.42		
-271	2x20			2.830/71.88	1.900/48.26	2.220/56.39		2.600/66.04		
-272	2x25			3.330/84.58	2.400/60.96	2.720/69.09		3.100/78.74		
-273	2x30		RND	3.830/97.28	2.900/73.66	3.220/81.79	.105/ 2.67	3.600/91.44		D
-274	2x35		SO	1.330/33.78	.400/10.16	.720/18.29	.675/17.15	1.100/27.94		A
-275	2x7			1.530/38.86	.600/15.24	.920/23.37		1.300/33.02		C
-276	2x8			1.630/41.40	.700/17.78	1.020/25.91		1.400/35.56		D
-277	2x10			1.830/46.48	.900/22.86	1.220/30.99		1.600/40.64		
-278	2x13			2.130/54.10	1.200/30.48	1.520/38.61		1.900/48.26		
-279	2x17			2.530/64.26	1.600/40.64	1.920/48.77		2.300/58.42		
-280	2x20			2.830/71.88	1.900/48.26	2.220/56.39		2.600/66.04		
-281	2x25			3.330/84.58	2.400/60.96	2.720/69.09		3.100/78.74		
-282	2x30	STD	SO	3.830/97.28	2.900/73.66	3.220/81.79	.675/17.15	3.600/91.44		D
-283	2x35	LP	RND	1.330/33.78	.400/10.16	.720/18.29	.105/ 2.67	1.100/27.94		A
-284	2x7			1.530/38.86	.600/15.24	.920/23.37		1.300/33.02		C
-285	2x8			1.630/41.40	.700/17.78	1.020/25.91		1.400/35.56		D
-286	2x10			1.830/46.48	.900/22.86	1.220/30.99		1.600/40.64		
-287	2x13			2.130/54.10	1.200/30.48	1.520/38.61		1.900/48.26		
66963-258	2x17	LP	RND	2.530/64.26	1.600/40.64	1.920/48.77	.105/ 2.67	2.300/58.42	30u"/.76u CMT/GOLD FLASH	D

Notes: This drawing is the property of and contains proprietary information of the design company. No part of this drawing should be used without the written consent of the design company.

SHEET INDEX		ISSUE		DO NOT SCALE DRAWING		TOLERANCE UNITS		FINISH		DATE	
INDEX	SH NO	ISSUE	DATE	BY	CHK	UNIT	INCH	MM	FINISH	DATE	
DRAWING NO.		REV.		SCALE		SHEET		OF		TOTAL	
66963-258		1		1:1		11		11		11	
TITLE		CUSTOMER		CODE		JOB NO.		DATE		BY	
SEA-HORSE VERTICAL		FCI		22236		9/19/90		9/19/90		9/19/90	
SCALE		SHEET		OF		TOTAL		DATE		BY	
5/1		D		66963		SHEET		11		DATE	

PRODUCT NO		SIZE	LATCH	PIN	DIM A	DIM B	DIM C	DIM D	DIM E	TERMINAL PLATING	STYLE
PRODUCT NO	SIZE	LATCH	PIN	DIM A	DIM B	DIM C	DIM D	DIM E	TERMINAL PLATING	STYLE	
66963-289	2x20	LP	RND	2.830/71.88	1.900/48.26	2.220/56.39	.105/ 2.67	2.600/66.04	30u"/.76u GXT/GOLD FLASH	D	
-290	2x25	LP	RND	3.330/84.58	2.400/60.96	2.720/69.09	.105/ 2.67	3.100/78.74		D	
-291	2x30	LP	RND	3.830/97.28	2.900/73.66	3.220/81.79	.105/ 2.67	3.600/91.44		D	
-292	2x5	SO	SO	1.530/39.78	.400/10.16	.720/18.29	.675/17.15	1.100/27.94		C	
-293	2x7	SO	SO	1.530/38.86	.600/15.24	.920/23.37		1.300/33.02		D	
-294	2x8	SO	SO	1.630/41.40	.700/17.78	1.020/25.91		1.400/35.56		D	
-295	2x10	SO	SO	1.830/46.48	.900/22.86	1.220/30.99		1.600/40.64		D	
-2/6	2x13	SO	SO	2.130/54.10	1.200/30.48	1.520/38.61		1.900/48.26		D	
-297	2x17	SO	SO	2.530/64.26	1.600/40.64	1.920/48.77		2.300/58.42		D	
-298	2x20	SO	SO	2.830/71.88	1.900/48.26	2.220/56.39		2.600/66.04		D	
-299	2x25	SO	SO	3.330/84.58	2.400/60.96	2.720/69.09		3.100/78.74		D	
-300	2x30	LP	SO	3.830/97.28	2.900/73.66	3.220/81.79	.675/17.15	3.600/91.44	30u"/.76u GXT/GOLD FLASH	D	
-301	2x5	NO	RND	1.330/33.78	.400/10.16	.720/18.29	.105/ 2.67	1.100/27.94	15u"/.38u Au OVER 50u"/1.27u Ni	A	
-302	2x7	NO	RND	1.530/38.86	.600/15.24	.920/23.37		1.300/33.02		C	
-303	2x8	NO	RND	1.630/41.40	.700/17.78	1.020/25.91		1.400/35.56		D	
-304	2x10	NO	RND	1.830/46.48	.900/22.86	1.220/30.99		1.600/40.64		D	
-305	2x13	NO	RND	2.130/54.10	1.200/30.48	1.520/38.61		1.900/48.26		D	
-306	2x17	NO	RND	2.530/64.26	1.600/40.64	1.920/48.77		2.300/58.42		D	
-307	2x20	NO	RND	2.830/71.88	1.900/48.26	2.220/56.39		2.600/66.04		D	
-308	2x25	NO	RND	3.330/84.58	2.400/60.96	2.720/69.09		3.100/78.74		D	
-309	2x30	NO	RND	3.830/97.28	2.900/73.66	3.220/81.79	.105/ 2.67	3.600/91.44		A	
-310	2x5	NO	RND	1.330/33.78	.400/10.16	.720/18.29	.150/ 3.81	1.100/27.94		C	
-311	2x7	NO	RND	1.530/38.86	.600/15.24	.920/23.37		1.300/33.02		D	
-312	2x8	NO	RND	1.630/41.40	.700/17.78	1.020/25.91		1.400/35.56		D	
-313	2x10	NO	RND	1.830/46.48	.900/22.86	1.220/30.99		1.600/40.64		D	
-314	2x13	NO	RND	2.130/54.10	1.200/30.48	1.520/38.61		1.900/48.26		D	
-315	2x17	NO	RND	2.530/64.26	1.600/40.64	1.920/48.77		2.300/58.42		D	
-316	2x20	NO	RND	2.830/71.88	1.900/48.26	2.220/56.39		2.600/66.04		D	
-317	2x25	NO	RND	3.330/84.58	2.400/60.96	2.720/69.09		3.100/78.74		D	
-318	2x30	NO	RND	3.830/97.28	2.900/73.66	3.220/81.79	.150/ 3.81	3.600/91.44		A	
-319	2x5	NO	RND	1.330/33.78	.400/10.16	.720/18.29	.105/ 2.67	1.100/27.94		C	
-320	2x7	NO	RND	1.530/38.86	.600/15.24	.920/23.37		1.300/33.02		D	
-321	2x8	NO	RND	1.630/41.40	.700/17.78	1.020/25.91		1.400/35.56		D	
-322	2x10	NO	RND	1.830/46.48	.900/22.86	1.220/30.99		1.600/40.64		D	
-323	2x13	NO	RND	2.130/54.10	1.200/30.48	1.520/38.61		1.900/48.26		D	
66963-324	2x17	NO	RND	2.530/64.26	1.600/40.64	1.920/48.77	.105/ 2.67	2.300/58.42	15u"/.38u Au OVER 50u"/1.27u Ni	D	

CUSTOMER		DATE		TIME		TITLE	
NAME	CODE	DATE	TIME	DATE	TIME	DATE	TIME
66963	324	5/1/90	5/1	5/1/90	5/1	5/1/90	5/1

REVISIONS		BY		DATE	
REV	DESCRIPTION	BY	DATE	REV	DESCRIPTION
K					

FCC		DATE		TIME		TITLE	
NAME	CODE	DATE	TIME	DATE	TIME	DATE	TIME
66963	324	5/1/90	5/1	5/1/90	5/1	5/1/90	5/1

Printed: Apr 12, 2011

REV	DESCRIPTION	BY	DATE
K			

PRECINCT NO	SIZE	LATCH NOTE 9	PLN SHAPE	QIM A	DIM B	QIM C	QIM D : .010	QIM E	TECHNICAL PLATING	STYLE
66963-361	2x5	STD	RND	1.330/33.78	.400/10.16	.720/18.29	.105/2.67	1.100/27.94	30u"/.76u GXT/GOLD FLASH	B
-362		STD	SO						150u"/.3.81u TIN	
-363		LP	RND						30u"/.76u AU OVER 50u"/.27u NI	
-364		LP	RND						15u"/.38u AU OVER 50u"/.27u NI	
-365		LP	RND						30u"/.76u GXT/GOLD FLASH	
-366		LP	SO				.105/2.67		150u"/.3.81u TIN	
-367		NO	RND				.150/3.81		30u"/.76u AU OVER 50u"/.27u NI	
-368		NO	RND						15u"/.38u AU OVER 50u"/.27u NI	
-369		NO	SO						30u"/.76u GXT/GOLD FLASH	
-370		NO	SO						150u"/.3.81u TIN	
-371		STD	RND						30u"/.76u AU OVER 50u"/.27u NI	
-372		STD	RND						15u"/.38u AU OVER 50u"/.27u NI	
-373		STD	RND						30u"/.76u GXT/GOLD FLASH	
-374		STD	SO						150u"/.3.81u TIN	
-375		LP	RND						30u"/.76u AU OVER 50u"/.27u NI	
-376		LP	RND						15u"/.38u AU OVER 50u"/.27u NI	
-377		LP	RND						30u"/.76u GXT/GOLD FLASH	
-378		LP	SO				.150/3.81		150u"/.3.81u TIN	
-379		NO	NO				.675/17.15		30u"/.76u AU OVER 50u"/.27u NI	
-380		NO	NO				.105/2.67		15u"/.38u AU OVER 50u"/.27u NI	
-381		NO	NO						30u"/.76u GXT/GOLD FLASH	
-382		NO	NO						150u"/.3.81u TIN	
-383		STD	STD						30u"/.76u AU OVER 50u"/.27u NI	
-384		STD	STD						15u"/.38u AU OVER 50u"/.27u NI	
-385		STD	STD						30u"/.76u GXT/GOLD FLASH	
-386		STD	STD						150u"/.3.81u TIN	
-387		LP	LP						30u"/.76u AU OVER 50u"/.27u NI	
-388		LP	LP						15u"/.38u AU OVER 50u"/.27u NI	
-389		LP	LP						30u"/.76u GXT/GOLD FLASH	
-390	2x5	LP	SO	1.330/33.78	.400/10.16	.720/18.29	.675/17.15	1.100/27.94	150u"/.3.81u TIN	B
-391	2x50	STD	RO	3.830/97.28	2.900/73.66	3.200/81.79	.105/2.67	3.600/91.44	30u"/.76u AU OVER 50u"/.27u NI	D
66963-392	2x30	STD	RD	3.830/97.28	2.900/73.66	3.200/81.79	.105/2.67	3.600/91.44	15u"/.38u AU OVER 50u"/.27u NI	D

ISSUE	MODEL	DO NOT SCALE	DATE	BY	DATE	BY	DATE	BY	DATE
1	1	1	08/01/01	J. J.	08/19/90	M. SHYK	08/19/90	M. SHYK	08/19/90

TABLETATION	YES	NO	INCH	MM	ANALOGES	Q - 1/2"
1	1	1	1	1	1	1

CUSTOMER	CODE	IDENT	DATE	BY	DATE	BY	DATE
FCI	22526	22526	08/19/90	M. SHYK	08/19/90	M. SHYK	08/19/90

HEADER	QUICKIE	SEA-+ORSE	VERTICAL	SCALE	STY	DATE	BY	DATE	BY	DATE
1	1	1	1	1	1	08/19/90	M. SHYK	08/19/90	M. SHYK	08/19/90

# Mouser Electronics

Authorized Distributor

Click to View Pricing, Inventory, Delivery & Lifecycle Information:

FCI:

[66963-085LF](#) [66963-272LF](#)