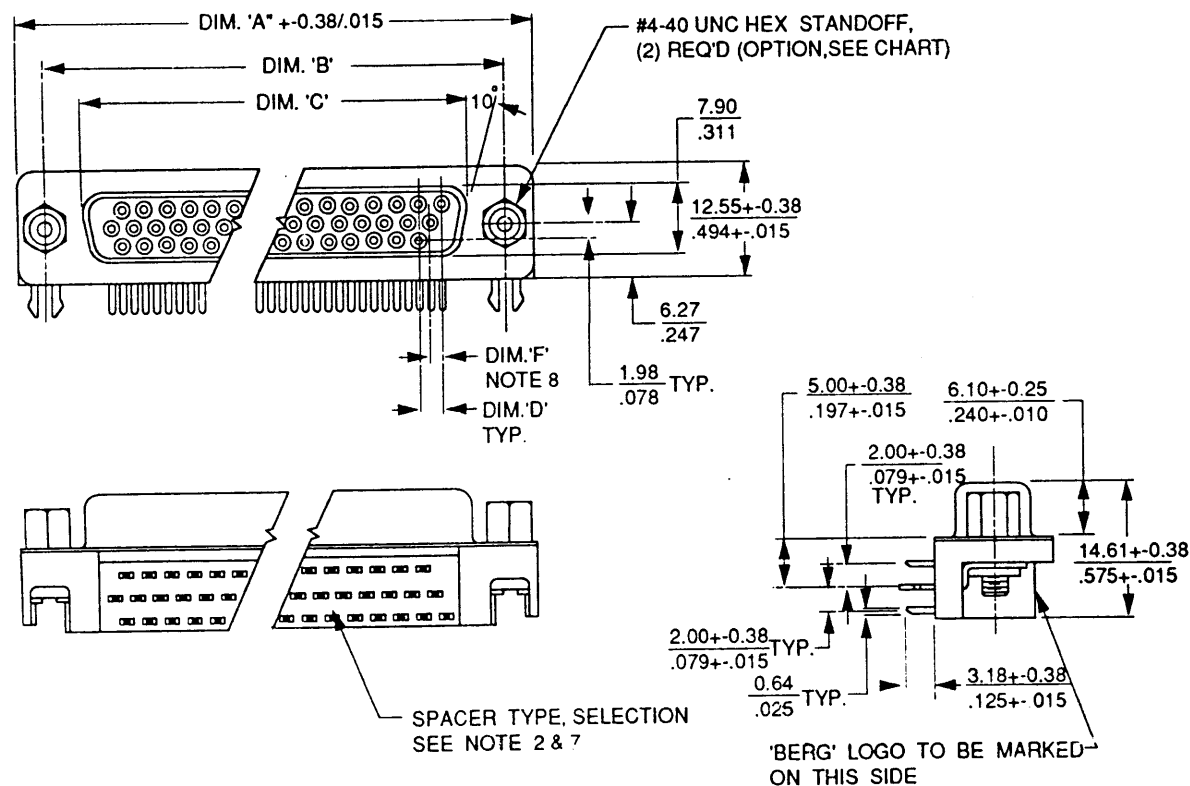


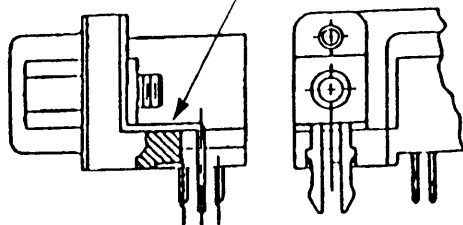
PRODUCT NO	NO. OF POS.	DIM. 'A'	DIM. 'B'	DIM. 'C'	DIM. 'D'
94102-XXXX15	15	30.84/1.214	24.99/984	16.26/640	2.29/.090
↑ -XXXX26		UNAVAILABLE			
↓ -XXXX44		UNAVAILABLE			
94102-XXXX62 (NOTE 2)		UNAVAILABLE			



mat'l code SEE NOTE 1				tolerances unless otherwise specified		CUSTOMER COPY			
itr	ecn no	dr	date	linear	angular				
A	T30264	JL	8/27/93		0.0+0.38 / .00+-.015			title D-SUB, HI-DENSITY, R/A, FEMALE, 5MM FOOT PRINT	product family D-SUB
B	T30312	JL	10/12/93		0.00+0.25 / .000+-.010				
C	T30339	JL	11/2/93		+0°30'				
		dr	J. LIN	8/17/93			size A3	code 94102	sheet 1 of 3
		engr	J. LIN	8/17/93					
		chr	J. LIN	8/17/93					
		appd	C M CHANG	8/25/93					
sheet	revision	C	C	C	C				
index	sheet	1	2	3	4				

product no  
SEE CHART

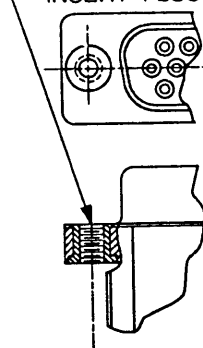
FLAT GROUNDING  
CLIP (NOTE 5)



TYPE '4'

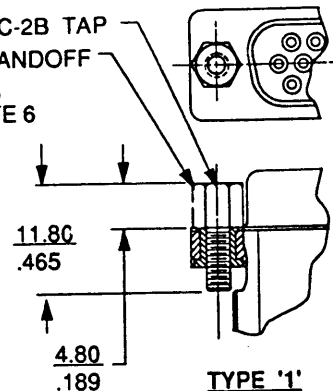
FIGURE 1. GROUNDING CLIP

#4-40-UNC THREADED  
INSERT FLUSH MOUNT



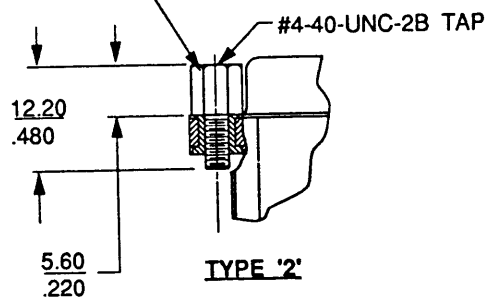
TYPE 'O'

#4-40-UNC-2B TAP  
#4-40 HEX-STANDOFF  
P/N 89760-005,  
(2) REQ'D, NOTE 6

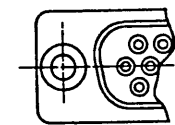


TYPE '1'

#4-40 HEX-STANDOFF, P/N 89760-006  
(2) REQ'D, NOTE 6

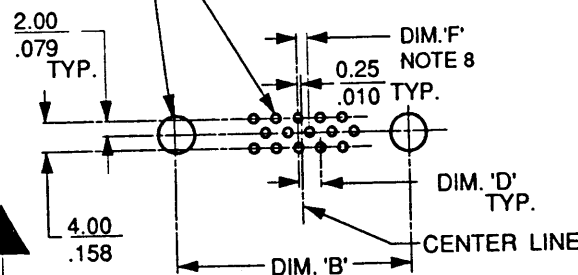


TYPE '2'



TYPE '9'

3.05/.120 DIA. HOLE, 2 PLACES  
1.19+0.08/.047+-.003 DIA. HOLE  
TYP.





MALE CONNECTOR  
MATING DIRECTION

FOR 15 POS. PCB LAYOUT ONLY

FIGURE 3. RECOMMENDED PCB MOUNTING LAYOUT

FIGURE 2. OPTIONS FOR HEX-NUT STANDOFF

part code SEE NOTE 1				- tolerances unless otherwise specified		CUSTOMER COPY		<b>BERG</b> ELECTRONICS	
tr	ecn no	dr	date	linear	0.0-0.38 / .00-.015 0.00-0.25 / .000-.010	projection		title D-SUB, HI-DENSITY, R/A, FEMALE, 5MM FOOT PRINT	
C				angles	+0°30'				
				dr	J. LIN 8/17/93		product family D-SUB		code
				engr	J. LIN 8/17/93		mm inch	size dwg no	
				chr	J. LIN 8/17/93	scale	A3	94102	sheet
				appd	C M CHANG 8/25/93	N/A			2 of
sheet	revision	sheet	1						
index									
					</				

product no  
SEE CHART

NOTES :

1. MATERIAL :
  - a. HOUSING : GF POLYESTER, FLAME RETARDANT PER UL 94V-0, COLOR : BLACK.
  - b. SHELL : STEEL STRIP WITH NICKEL OR TIN PLATING, THE SELECTION SEE NOTE 2.
  - c. CONTACTS : PHOSPHOR BRONZE WITH GOLD PLATING ON THE CONTACT AREA AND TIN PLATING ON THE SOLDER TAIL. THE SELECTION SEE NOTE 2.
2. THE PART NUMBERS ARE ASSIGNED AS FOLLOWS :

94102 - X X X X Y Y

- NO. OF CONTACT
- SHELL PLATING & SPACER TYPE : 1 FOR NICKEL SHELL WITH OPEN SPACER  
2 FOR NICKEL SHELL WITH CLOSE SPACER  
3 FOR TIN SHELL WITH OPEN SPACER  
4 FOR TIN SHELL WITH CLOSE SPACER
- GROUNDING CLIP : 4 FOR TYPE '4'.
- HEX-STANDOFF : 0 FOR TYPE '0', 1 FOR TYPE '1', 2 FOR TYPE '2', 9 FOR TYPE '9'.
- CONTACT PLATING : 0 FOR GOLD FLUSH  
1 FOR 10 MICROINCH GOLD.  
3 FOR 30 MICROINCH GOLD.  
5 FOR 15 MICROINCH GOLD

3. RECOMMENDED PCB MOUNTING LAYOUT SHOWN IN FIGURE 3.
4. THE OPTIONS FOR GROUND CLIP PER FIGURE 1, AND FOR HEX-STANDOFF PER FIGURE 2.
5. GROUNDING CLIP : TYPE '4' IS FOR 3.05/120 DIA. PCB HOLE.
6. BOTH HEX-STANDOFF SHALL BE FASTERNED WITH D-SUB TOGETHER.
7. THERE ARE TWO TYPE OF SPACER, ONE IS THE OPEN(STANDARD) TYPE, THE OTHER IS THE CLOSE TYPE; THE SELECTION SEE NOTE 2.
8. DIM. 'F' IS 1.14/.045 FOR 15, 26 AND 44 POS., BUT IS 1.21/.048 FOR 62 POS. PART.

mat'l code SEE NOTE 1				tolerances unless otherwise specified		CUSTOMER COPY	<b>BERG</b> ELECTRONICS	
lr	ecn no	dr	date	linear	0.0-0.38 / .00+-015 0.00+-0.25 / .000+-010	projection	title D-SUB, HI-DENSITY, R/A, FEMALE, 5MM FOOT PRINT	
C				angles	+0°30'			
				dr	J. LIN 8/17/93	mm	product family	D-SUB
				engr	J. LIN 8/17/93	inch	size	dwg no
				chr	J. LIN 8/17/93	scale	A3	94102
				appd	C.M. CHANG 8/25/93	N/A		code TWN
								sheet 3 of
sheet index	revision	sheet	1					