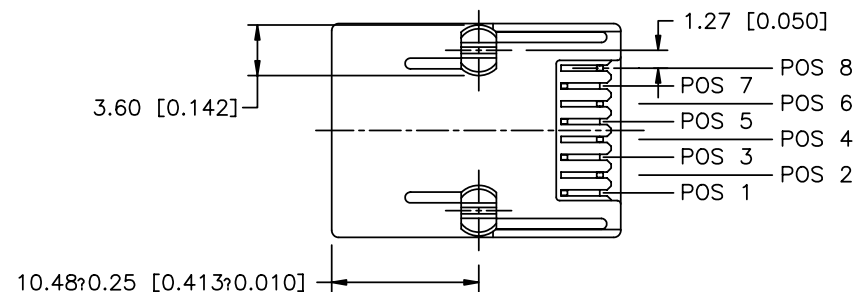
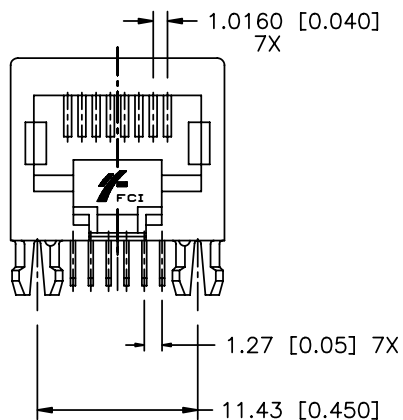
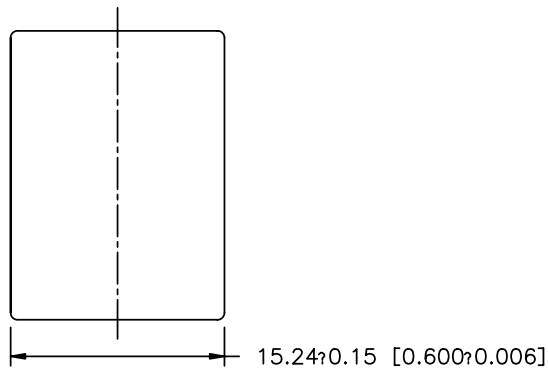


Tous droits strictement reserves. Reproduction ou communication a des tiers interdite sous quelque forme que ce soit sans autorisation écrite du propriétaire. Propriete de c FCI. Droits de reproduction FCI.

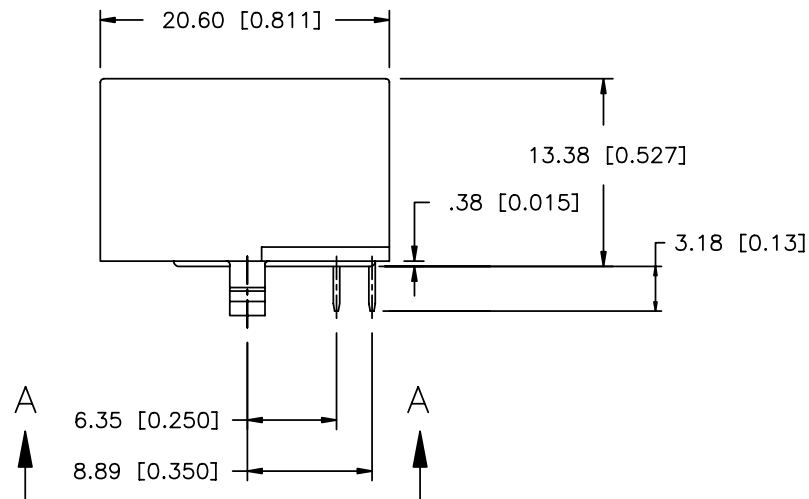


All rights strictly reserved. Reproduction or issue to third parties in any form whatever is not permitted without written authority from the proprietor. Property of FCI. Copyright FCI.

PRODUCT NO
SEE TABLE



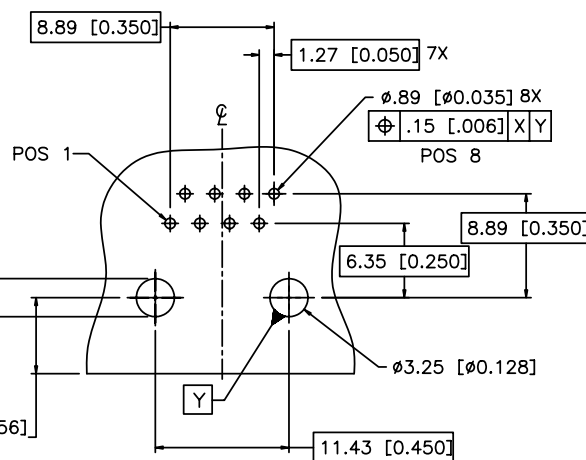
VIEW A-A



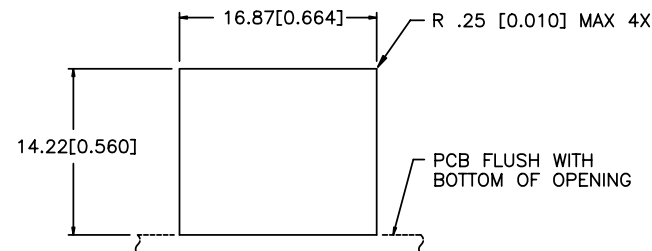
mat'l. code				tolerances unless otherwise specified		CUSTOMER COPY		FCI	
ltr	ecn no	dr	date	linear angles		projection		www.fciconnect.com	
A	V00456	BKB	1/24/00					title	
B	V00691	CP	4/17/00					UNSHIELDED NET JACK II RJ45	
C	V12718	LP	1/22/00					SINGLE PORT ASSY, SNAP PEG	
D	M05-0074	MTH	4/23/05	dr	B. BAHN	1/24/00	MM/INCH scale 1:1	product family MOD JACK	
				enr	B. BRUBAKER	1/24/00		code	
				chr	B. BRUBAKER	1/24/00		size dwg no	
				appd	B. BRUBAKER	1/24/00		53509	
sheet index	revision sheet	D	D						sheet 1 of 2
		1	2						



PRODUCT NO
53509-501XXX
53509-501XXXLF
NET JACK MAGNETICS OPTION CODE-XXX
SEE GES-12-020



RECOMMENDED P.C.B. LAYOUT
AS VIEWED FROM TOP SIDE (COMPONENT SIDE)



RECOMMENDED PANEL OPENING

NOTES :

1. RECOMMENDED PCB THICKNESS 1.57 [0.062].
2. HOUSING MATL: HIGH TEMP. THERMOPLASTIC, COLOR BLACK, UL94V-0.
3. CONTACT MATL: COPPER ALLOY
MATING AREA PLATING: 1.27uM/50u" MIN Au OVER Ni.
SOLDER AREA PLATING: 2.54uM/100u" MIN TIN LEAD OVER Ni.
LEAD FREE OPTION:
SOLDER AREA PLATING: 2.54uM/100u" MIN PURE TIN OVER Ni.
4. ALL DIMENSIONS IN MILLIMETERS AND INCHES.
5. DIMENSIONS AND TOLERANCES ARE IN ACCORDANCE WITH ASME Y14.5M 1994.
6. LF SUFFIX AT THE END OF PART NUMBER IS LEAD FREE.
7. THE HOUSING WILL WITHSTAND EXPOSURE TO 260°C PEAK TEMPERATURE FOR 15 SECONDS IN A WAVE SOLDER APPLICATION WITH A 1.5mm MINIMUM THICK CIRCUIT BOARD. SEE APPLICATION NOTES/PROCEDURES IF THEY ARE AVAILABLE.
8. THIS PRODUCT MEETS EUROPEAN UNION DIRECTIVES AND OTHER COUNTRY REGULATION AS DESCRIBED IN GS-22-008.

mat'l. code				tolerances unless otherwise specified		CUSTOMER COPY		FCI		www.fciconnect.com	
ltr	ecn no	dr	date	linear	angles	projection	title	product family	MOD JACK	code	
A	V00456	BKB1	24/00				UNSHIELDED NET JACK II RJ45				
B	V00691	CP4	17/00				SINGLE PORT ASSY, SNAP PEG				
C	V12718	LP 1	22/								
D	M05-0074	MTH#	23/05	dr	B BAHN	1/24/00	M/INCH	product family	MOD JACK	code	
				enr	B.BRUBAKER	1/24/00	scale	size	dwg no	sheet	
				chr	B.BRUBAKER	1/24/00	1:1	A	53509	2 of 2	
				appd	B.BRUBAKER	1/24/00					
sheet index	revision sheet	D	D								
		1	2								