

MICRO SWITCH
a Honeywell Division

FED.MFG.CODE 91929

SPRING

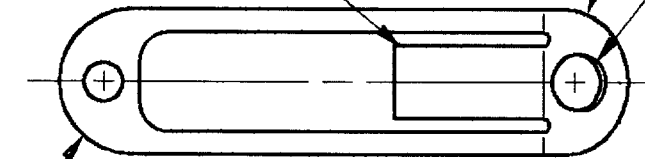
CATALOG LISTING
15PA235-PL

THIS DRAWING COVERS A PROPRIETARY ITEM AND IS THE PROPERTY OF MICRO SWITCH, A DIVISION OF HONEYWELL. THIS DRAWING IS NOT TO BE COPIED OR USED WITHOUT THE APPROVAL OF MICRO SWITCH.

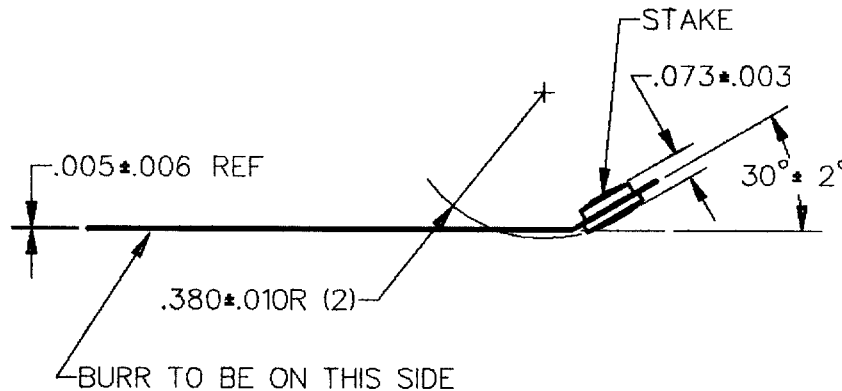
CENTER MEMBER PARALLEL
WITH SIDE LEGS WITHIN $\pm 3^\circ$

END OF SPRING MAY BE
BOWED .003 MAX AFTER
STAKING

CONTACT MATERIAL
FINE SILVER



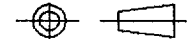
SPRING MATERIAL
BERYLLIUM COPPER C17200



NOTES

- 1 - HONEYWELL PURCHASE PART NO. IS 123233
- 2 - MICRO SWITCH PART NO. PL-10060

THIRD ANGLE PROJECTION



SCALE 2 : 1

DO NOT SCALE PRINT

UNLESS OTHERWISE SPECIFIED
TOLERANCES ARE

ONE PLACE	(.0)	$\pm .030$
TWO PLACE	(.001)	$\pm .015$
THREE PLACE	(.000)	$\pm .005$
ANGLES		\pm

WEIGHT .076 LB

15PA235-PL

M

DRAWING
NUMBER

1

ISSUE

REPLACES

RELEASE NO. PR-15868

CHECK

REVISIONS

CHECK

16 SEP 87

CHECK

10 SEPT 87

DDM/CAD

DRAWN

WJK

Mouser Electronics

Authorized Distributor

Click to View Pricing, Inventory, Delivery & Lifecycle Information:

[Honeywell:](#)

[15PA235-PL](#)