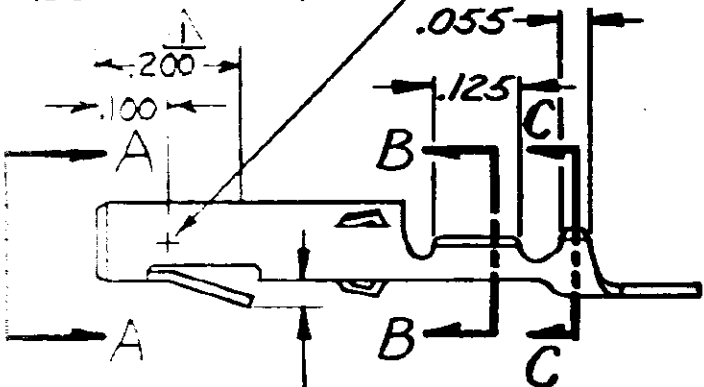


.078/.081 DIA.



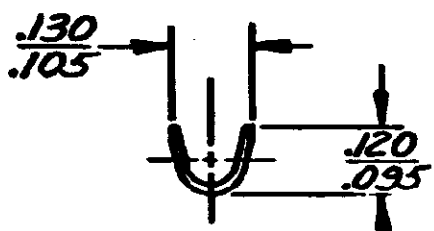
VIEW A-A

POINT OF MEASUREMENT
INSIDE OF RECEPTACLE



SECT. B-B

.020 MIN.



SECT. C-C

PART NO.	MATL & FINISH
350078-1	BRASS-PRETIN
350078-4	PH. BRZ.-PRETIN
350078-5	BRASS- Δ

Δ .000030 THK. GOLD OVER NICKEL ON INSIDE OF RECEPT. * WIRE BARREL; REMAINDER OF CONTACT IS NICKEL PLATED.

				CUSTOMER COPY REFERENCE ONLY			
				MATERIAL AND FINISH		ETE TE Connectivity	
				SEE-TABLE			
				CLASS		#	
				WIRE RANGE INSULATION		TYPE	
				30-22 AWG .040-.075		#	
N1 REVISED PER ECO-11-005294		RK 14 APR 11		TOLERANCE EXCEPT AS NOTED \pm .015		SCALE	
LTR		REVISION RECORD		DATE		LOC CM A	
SAUER		H.E. IGALLA		NO 350078		REV N1	
NAME MATE-N-LOK SOCKET							