

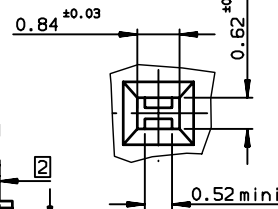
1

2

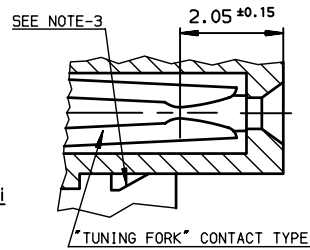
3

4

DETAIL-A

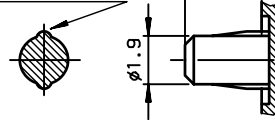


SECTION-FF

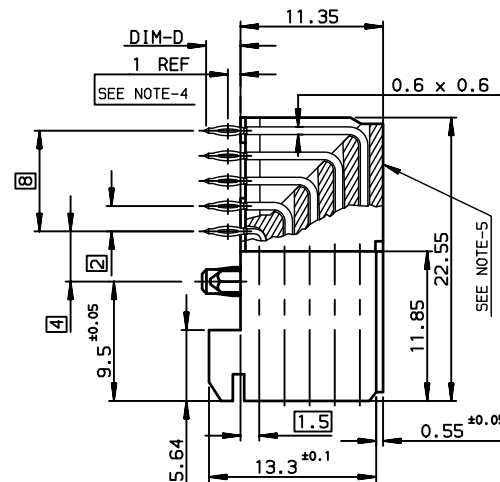


DETAIL OF PRESS-IN PEGS

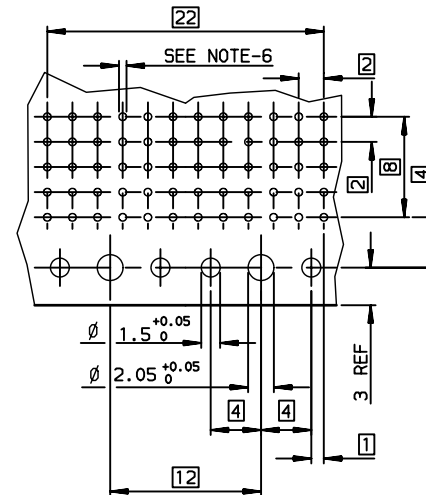
RETENTION FEATURES



DIM-D

1 REF
SEE NOTE-4

LAYOUT FOR P.C.B



GENERAL CHARACTERISTICS AND ROHS INFORMATIONS:

SEE GS-12-447

NOTE-1: PRESS-IN RETENTION PEG

NOTE-2: CONNECTORS WITH PCB-2.4mm ARE
COMPATIBLE WITH WIDE AND NARROW BODIES

NOTE-3: PLUG FOR CODING KEY FIXING

NOTE-4: EYE OF THE NEEDLE PRESS-FIT CTS TYPE

NOTE-5: FLAT ROCK INSERTION TOOLING IN PCB,
SEE DRW REF:C-8626-1003

NOTE-6: METALIZED HOLE DEFINITION,SEE GS-12-447

NOTE-7: IF SUFFIX "P" IS ADDED IN P/N, PACKAGING IS IN TRAYS,
BUT CONNECTOR MARKING IS WITHOUT "P"

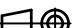
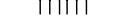

Example : HM1FxxxxxxxH6PLF, marking:HM1FxxxxxxxH6LF

European Views

TIN LEAD Part Number: HM1F52FDP000H6		
LEAD FREE Part Number: HM1F52FDP000H6LF		
TERMINATION TYPE	D = 2.90 ±0.3	L = 3 ±0.05

(REDUCED SCALE SHEET)

rev	ecn no	dr	date
D	-	CHA	1999/04/14
E	LS05-004	MLE	2005/02/17
F	LS06-0095	LGO	2006/07/03
G	LS06-0159	MLE	2006/10/23
H	LS07-0266	MLE	2007/11/06
-	-	-	-
-	-	-	-

www.fciconnect.com			surface ISO 1302 ✓		tolerance std ISO 406 ISO 1101		projection 		mm 		
			TOLERANCES UNLESS OTHERWISE SPECIFIED								
Dr	CHAMPION	1991/09/25	ANGULAR 0.XX' ±2'	LINEAR	0.X	±0.1	size A3	Scale 2.5			
Eng	LENOIR	1991/09/25			0.XX	±0.1					
Chr	LEGARE	1991/09/25			0.XXX	±0.1		ECN LS07-0266			
Appr	LEGARE	1991/09/25	Product family				METRAL		Spec ref -		
			title METRAL FEMALE 5 ROWS 60 CTS RIGHT ANGLE PRESS-FIT/PRESS-IN PEG				dwg no C-8626-0073		Rev. H		
			catalog no -				CUSTOMER		sheet 1 of 1		

REV F - 2006-04-17

1

2

3

4

A

B

C

D