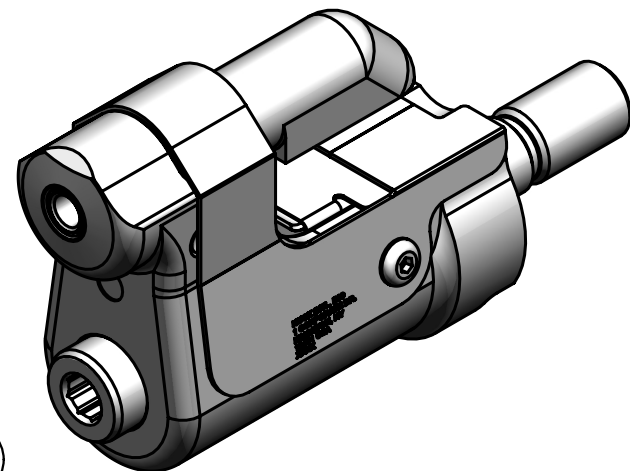
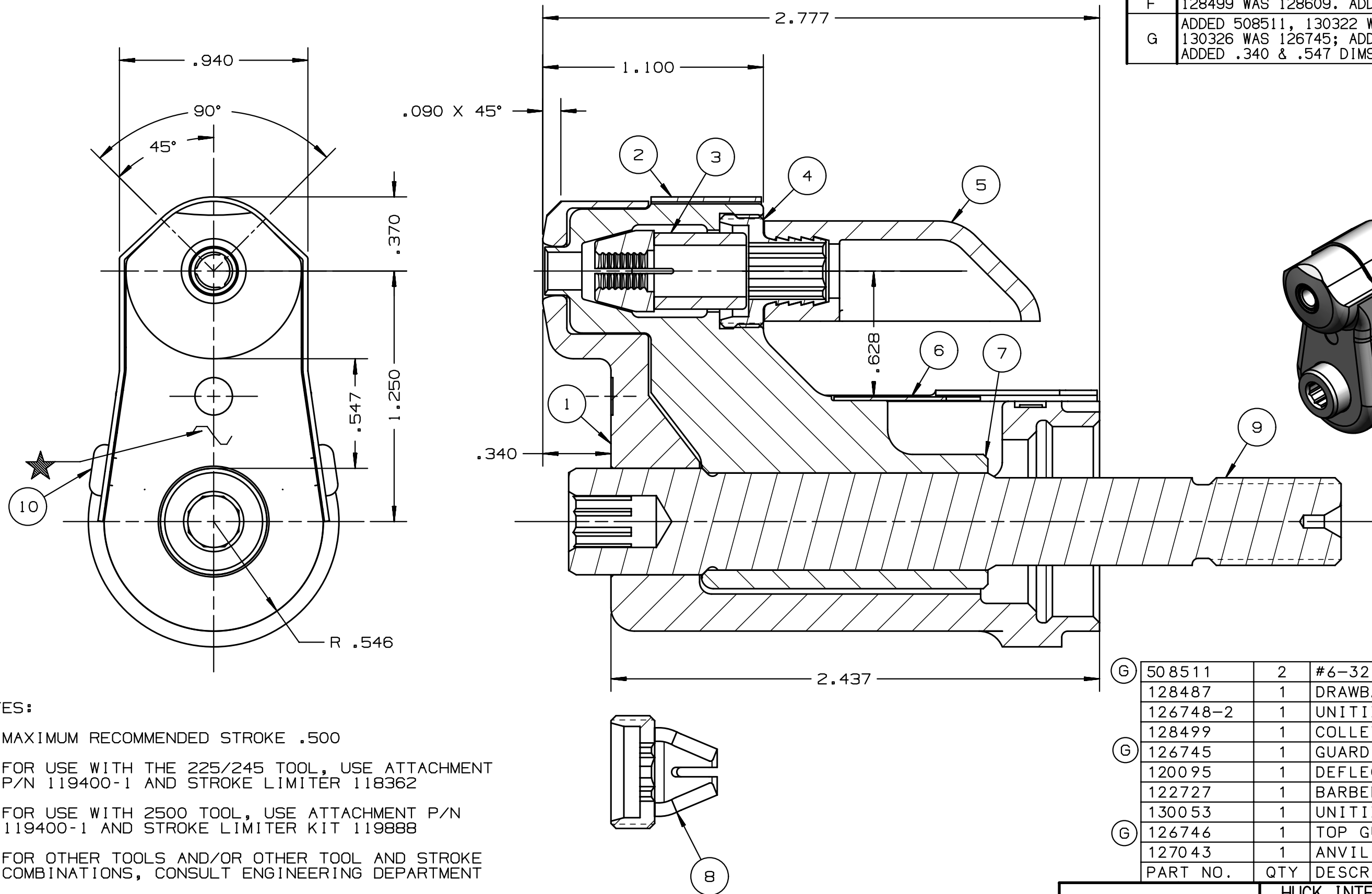


REV	DESCRIPTION	DET	DATE
E	ITEM 3, 130053 WAS 123189	EL	11/10/11
F	128499 WAS 128609. ADDED 128487.	JJC	07/31/12
G	ADDED 508511, 130322 WAS 126746, 130326 WAS 126745; ADDED VIEW; ADDED .340 & .547 DIMS	NDG	06/03/13



NOTES:

- 1 MAXIMUM RECOMMENDED STROKE .500
- 2 FOR USE WITH THE 225/245 TOOL, USE ATTACHMENT P/N 119400-1 AND STROKE LIMITER 118362
- 3 FOR USE WITH 2500 TOOL, USE ATTACHMENT P/N 119400-1 AND STROKE LIMITER KIT 119888
- 4 FOR OTHER TOOLS AND/OR OTHER TOOL AND STROKE COMBINATIONS, CONSULT ENGINEERING DEPARTMENT
- 5 SHIP WITH STOP 126747
- 6 SHIP WITH DEFLECTOR 126748-2
- 7 SHIP WITH (2) .030 SHIMS 128290 REFERENCE PB563 FOR PROPER USE

G	508511	2	#6-32 B.H.C.S.	10
	128487	1	DRAWBAR	9
	126748-2	1	UNITIZED DEFLECTOR	8
	128499	1	COLLET	7
G	126745	1	GUARD	6
	120095	1	DEFLECTOR	5
	122727	1	BARBED RETAINER	4
	130053	1	UNITIZED CHUCK JAW	3
G	126746	1	TOP GUARD	2
	127043	1	ANVIL	1
	PART NO.	QTY	DESCRIPTION	ITEM

IDENTIFICATION PER SPEC 42-311: ★ ETCH	HUCK INTERNATIONAL, INC., I.S.D 1 CORPORATE DR KINGSTON, NEW YORK 12401		
ITAR/ECCN: EAR99	NOSE ASSEMBLY -06 LGP STRADDLE		
SCH B#: 8467.99.0190	FINAL ASSY: FOR USE WITH 206-375		
HTS: 8467.99.0190	ENG: MVM CK:	DATE: 02/12/02	SCALE: 2:1
	B	99-3734	