

DO NOT
SCALE FROM
THIS PRINT

 THIS PRODUCT MANUFACTURED
WITH LEAD-FREE PROCESSING

DESIGNED & DIMENSIONED
IN MILLIMETERS[INCHES]

SMA-J-P-X-ST-EM1

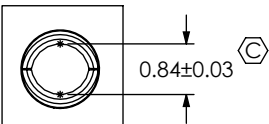
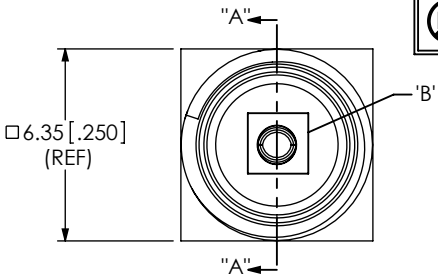
GENDER
-J: JACK

TYPE
-P: PCB

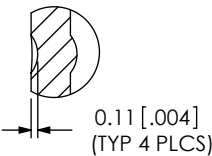
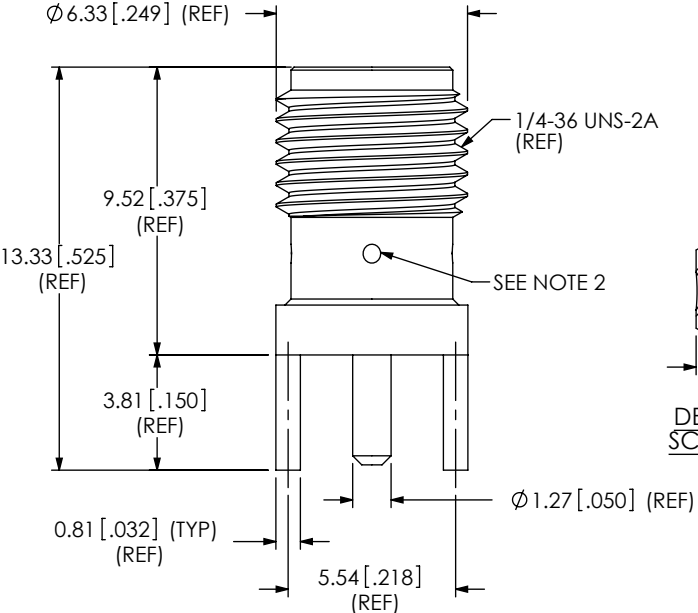
TERMINATION
-EM1: EDGE MOUNT

ORIENTATION
-ST: STRAIGHT

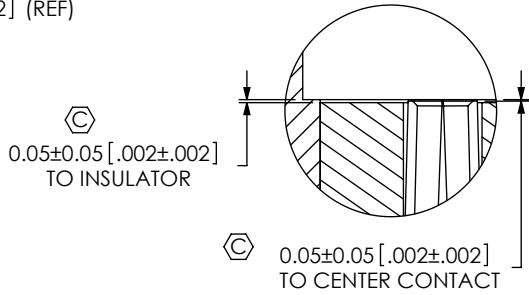
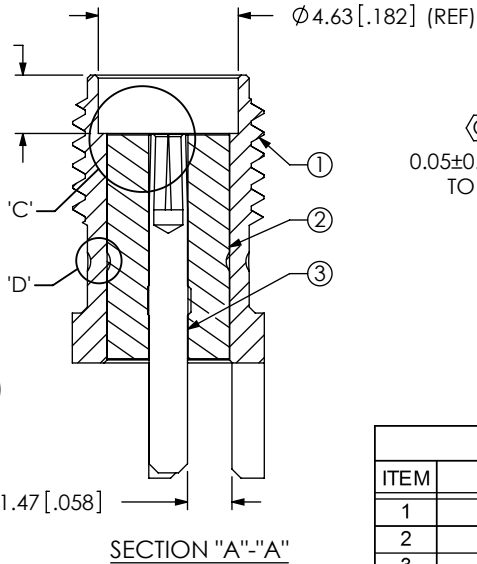
PLATING SPECIFICATION
-H: 30μ" GOLD CENTER CONTACT,
3μ" GOLD OUTER CONTACT
(SEE TABLE 1)



DETAIL 'B'
SCALE 8:1



DETAIL 'D'
SCALE 8:1



DETAIL 'C'
SCALE 8:1

TABLE 1		
ITEM	COMPONENT	-H
1	SHELL	SMA-J-P-F-ST-EM1-SHL
2	INSULATOR	SMA-INS-006
3	SOCKET	SMA-SKT-005-H

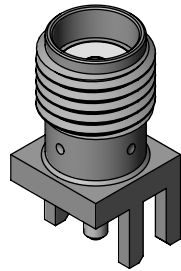
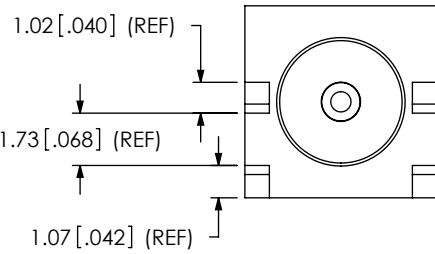
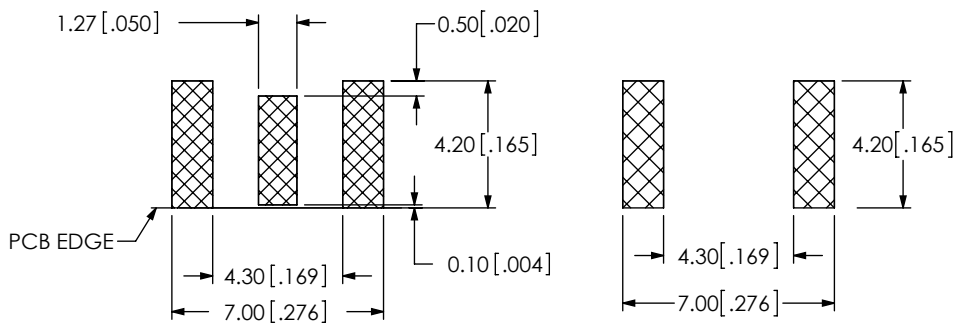



FIG 1
SMA-J-P-X-ST-EM1 SHOWN

RECOMMENDED PCB LAYOUT
BOARD THICKNESS: 1.57 MM



NOTES:

1.  REPRESENTS A CRITICAL DIMENSION.
2. STAKE AROUND CIRCUMFERENCE 4 INDENTS EQUALLY SPACED.
3. PUSHOUT FORCE FOR INSULATOR: 44.48 N [10 LB] MIN.
4. CENTER CONTACT PUSHOUT FORCE: 26.69 N [6 LB] MIN.
5. PARTS TO BE PACKAGED IN TRAYS; IF QUANTITY IS LESS THAN HALF TRAY, PARTS TO BE PACKAGED IN COHESIVE FOAM
6. NOTE DELETED.
7. NOTE DELETED.
8. NOTE DELETED.

UNLESS OTHERWISE SPECIFIED,
DIMENSIONS ARE IN
MILLIMETERS [INCHES].
TOLERANCES ARE:
DECIMALS ANGLES
.X: ±0.3 [.01] 5°
.XX: ±0.13 [.005]
.XXX: ±0.051 [.0020]

PROPRIETARY NOTE
THIS DOCUMENT CONTAINS INFORMATION
CONFIDENTIAL AND PROPRIETARY TO
SAMTEC, INC. AND SHALL NOT BE REPRODUCED
OR TRANSFERRED TO OTHER DOCUMENTS OR
DISCLOSED TO OTHERS OR USED FOR ANY
PURPOSE OTHER THAN THAT WHICH IT WAS
OBTAINED WITHOUT THE EXPRESSED WRITTEN
CONSENT OF SAMTEC, INC.

MATERIAL: SHELL: BRASS
SOCKET: COPPER ALLOY
DIELECTRIC: PTFE



520 PARK EAST BLVD, NEW ALBANY, IN 47150
PHONE: 812-944-6733 FAX: 812-948-5047
e-Mail: info@SAMTEC.com code: 55322

DESCRIPTION:
SMA STRAIGHT, EDGE MOUNT JACK- 50 OHM
DWG. NO.
SMA-J-P-X-ST-EM1
BY: R MUSSER 01/28/2008 SHEET 1 OF 1