

# EMC Components

## EMC Filters for AC Power Supply Cased (3-Phase, Mid-Size)

## ZAGT-M Series

### FEATURES

- These are compact type 3-phase EMC filters with a highly efficient thermal design, providing high insertion loss.
- They are highly effective at preventing both the radiation and penetration of EMC noise. The parts are, therefore, highly immune to externally generated noise and do not, themselves, serve as sources of radiated noise
- For the CISPR frequency band, this product provides superior attenuation for both differential mode and common mode noise components.
- Withstand voltages is AC.1250V between the lines and AC. 2000V between line and ground.
- Voltage drop and temperature rise are well controlled and kept to minimum levels.
- Leakage current is maintained at less than 1mA.

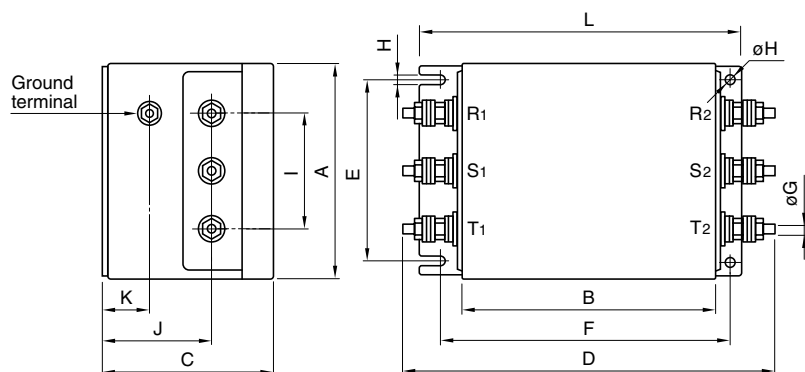
### SAFETY STANDARDS

Part No.	UL	CSA	TÜV
ZAGT2230-M	E62388	LR76849C	R9750222
ZAGT2250-M	E62388	LR76849C	R9750222
ZAGT2280-M	E62388	LR76849C	R9750222

### APPLICATIONS

Computers, hard disk drives, electronic exchange devices, NC control devices, inverters for motor, etc.

### SHAPES AND DIMENSIONS



Dimensions in mm

Part No.	A	B	C	D	E	F	øG	H	I	J	K	L
ZAGT2230-M	105	120	80	176	85	140	M6	5.5	64	50	20	160
ZAGT2250-M	110	150	80	212	90	170	M6	5.5	64	50	20	190
ZAGT2280-M	120	200	110	274	100	220	M8	5.5	64	66	30	240

• Case: metal, terminal: stud

### ELECTRICAL CHARACTERISTICS

Part No.	ZAGT2230-M	ZAGT2250-M	ZAGT2280-M
Rated voltage Eac(V)	250	250	250
Rated current(A)	30	50	80
Test voltage Eac(V)[Between terminal and case]	2000	2000	2000
Insulation resistance(MΩ) [DC. 500V, 1min/between terminal and case]	100min.	100min.	100min.
Leakage current(mA)[250V • 60Hz]	1max.	1max.	1max.
DC resistance(mΩ)	10max.	6max.	3.5max.
Operating temperature range(°C)[Including self-temperature rise]	-25 to +85	-25 to +85	-25 to +85
With derating over(°C)	55	55	55
Temperature rise(°C)	30max.	30max.	30max.
Attenuation frequency range (MHz)[+5 to +35°C]	Differential mode 0.3 to 30[25dB]	0.4 to 30[20dB]	0.5 to 30[20dB]
	Common mode 0.3 to 20[25dB]	0.3 to 30[20dB]	0.5 to 30[20dB]
Weight(kg)	1.7	2.5	5.5

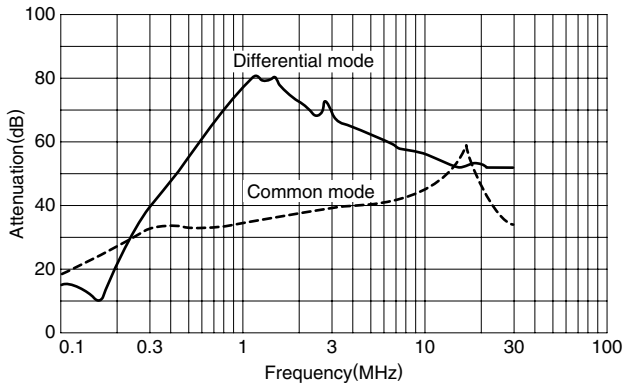
# EMC Components

## EMC Filters for AC Power Supply Cased (3-Phase, Mid-Size)

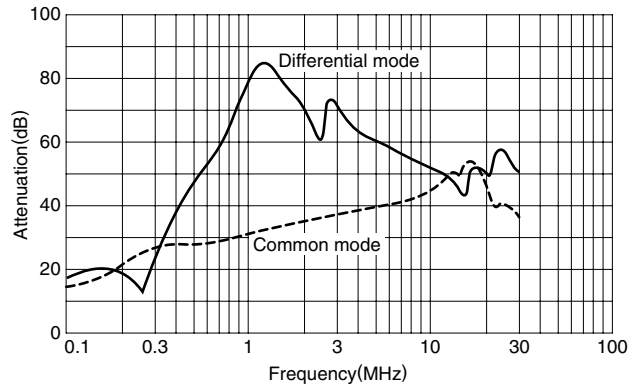
# ZAGT-M Series

### TYPICAL ELECTRICAL CHARACTERISTICS ATTENUATION vs. FREQUENCY CHARACTERISTICS

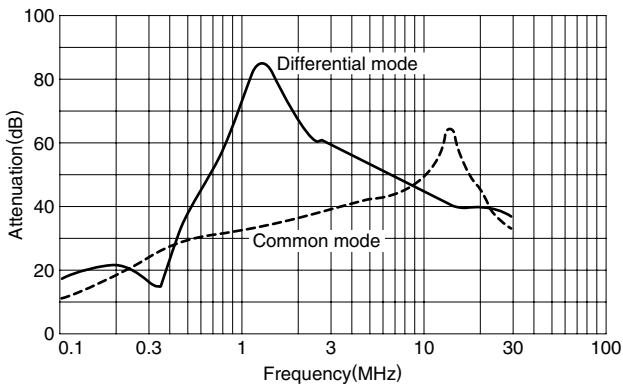
ZAGT2230-M



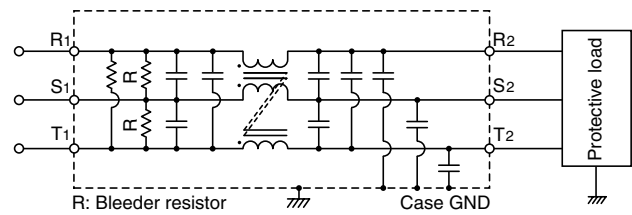
ZAGT2250-M



ZAGT2280-M



### CIRCUIT DIAGRAM



### CAUTIONS

- When there is a danger of a high energy pulse voltage (over 2kV for over 1μs), use a surge absorbing element such as a varistor, or an arrester on the EMC filter power supply input side.

