

# RL-3410 RL-3420, RL-3430 CURRENT SENSORS



These encapsulated Current Sensing coils are designed for PC board mounting and are used as a nonintrusive method of controlling, monitoring or measuring AC currents. The sensors are non-contact devices having no DC power loss resulting in no heating problems. High quality toroids are used in order to obtain optimum performance over the designated current and frequency range.

## FEATURES:

- Molded Aperture for Primary Wire(s)
- Frequency Range Up to 100kHz
- Meets VDE Specifications
- PC Board Mounting

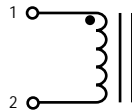
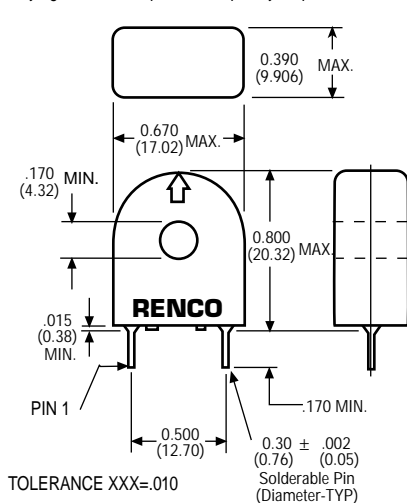
## APPLICATIONS:

- Isolated current feed-back signal in Switch Mode Power Supplies
- Motor current load/overload
- Isolated bi-directional current sensor with full wave bridge rectifier
- Ultra-sound current
- High resolution sonar current

Renco Part No.	Sensing Range (Amps)	Frequency Response* (kHz)	Secondary Turns	Secondary Inductance mH (Min.)	Secondary Inductance Test Voltage @ 15.75kHz	Secondary DCR Ohms (Max.)	Secondary Terminating Resistance Ohms** (Nom.)	Primary Unipolar Amp usec. Rating (Max.)	Primary Bipolar Amp usec. Rating (Max.)	1 Turn Primary Peak Sense Current (Amps)
RL-3410	2-10	5-25	50	5.0	0.5	0.7	50	150	300	20
RL-3420	2-14	5-50	100	20.0	1.0	1.40	100	300	600	20
RL-3430	1-35	1-100	200	80.0	2.0	4.50	200	600	1200	20

\* Outside frequency range square wave deteriorates.

\*\*Varying R affects output and frequency response.



## NOTES:

- Maximum operating temperature: 105°C.
- Maximum ratings are with a 1 turn primary and specified secondary terminating resistance.
- Amp/microsecond (A/usec) rating of primary equals Volt/microsecond (V/usec) rating of secondary when the secondary is terminated with its specified resistance. (Note: A/usec is equal to the product of a square wave pulse current, in Amps, multiplied by the current pulse width in microseconds.)
- Inductor scale factor is:  $V_{out} = 1 \text{ Volt/Amp}$  when the specified terminating resistance is used.

Dimensions: Inches  
(mm)



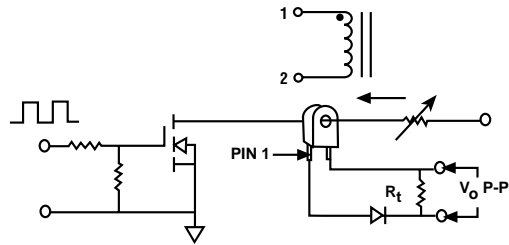
## RENCO ELECTRONICS, INC.

595 International Place, Rockledge, FL 32955-4200 USA

(321) 637-1000 • Toll Free Engineering Hot line 800-645-5828

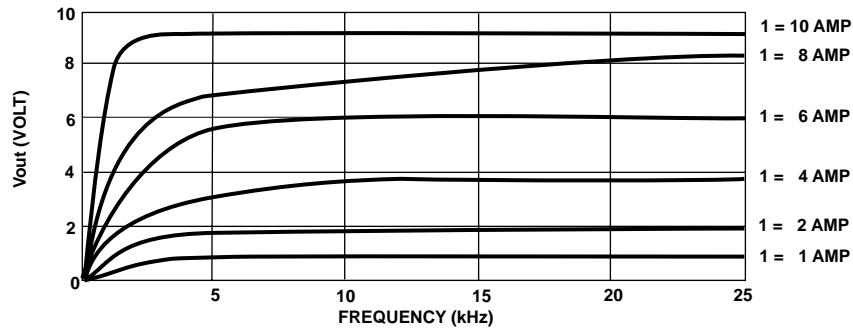
Fax: (321) 637-1600 Web Site: [www.rencousa.com](http://www.rencousa.com) E-mail: [sales@rencousa.com](mailto:sales@rencousa.com)

# TEST CIRCUIT



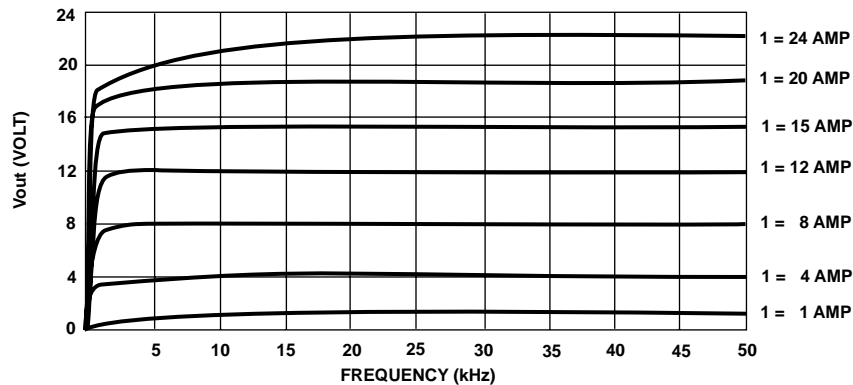
**RL 3410**

**50 TURNS**



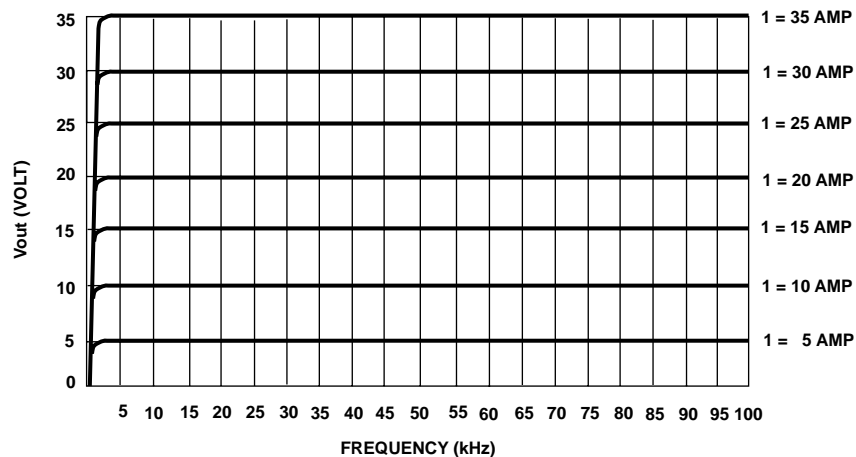
**RL 3420**

**100 TURNS**



**RL 3430**

**200 TURNS**



**RENCO ELECTRONICS, INC.**

✉ 595 International Place, Rockledge, FL 32955-4200 USA

☎ (321) 637-1000 • Toll Free Engineering Hot line 800-645-5828

📠 Fax: (321) 637-1600 🌐 Web Site: [www.rencousa.com](http://www.rencousa.com) ✉ E-mail: [sales@rencousa.com](mailto:sales@rencousa.com)