

Compensated High Inductance Choke, 1-phase



Approvals and Compliances

Description

- Current compensated choke
- 1-phase choke
- Flexible wire
- Flange for mounting onto printed circuit board
- Fully potted resign

Applications

- Placed in front of frequency converter
- Stepper motor drives
- UPS-systems
- Inverter

Weblinks

[pdf datasheet](#), [html-datasheet](#), [General Product Information](#), [Distributor-Stock-Check](#), [Detailed request for product](#)

Technical Data

| | |
|---------------------------|--------------------------------|
| Rated voltage | up to 540 VAC up to 760 VDC |
| Rated Current | 4 - 20 A @ Ta 40 °C |
| Rated inductance | 14 - 60 mH, Tol. -30% +50% |
| Power Operating Frequency | 50 - 400 Hz |
| Terminal Type | Flexible wire |
| Weight | 145 - 512 g |
| Material: Housing | UL 94V-0 |
| Sealing Compound | UL 94V-0 |

| | |
|---------------------------|---|
| Test Voltage | 2.5 kV, 50 Hz, 2 sec, winding to winding |
| Isolation Voltage | 2.5 kV eff., 50 Hz, 2 sec, winding to ambient |
| Climatic Category | 25/100/21 acc. to IEC 60068-1 |
| Allowable Operation Temp. | -25 °C to 100 °C |


Approvals and Compliances

Detailed information on product approvals, code requirements, usage instructions and detailed test conditions can be looked up in [Details about Approvals](#)

Approvals


The approval mark is used by the testing authorities to certify compliance with the safety requirements placed on electronic products.

Approval Reference Type: DKLP

| Approval Logo | Certificates | Certification Body | Description |
|---|------------------------------|--------------------|-----------------|
|  | UL Approvals | UL | UL File Number: |

Application standards

Application standards where the product can be used

| Organization | Design | Standard | Description |
|---|--------------------------------|--------------|---|
|  | Designed for applications acc. | IEC/UL 60950 | IEC 60950-1 includes the basic requirements for the safety of information technology equipment. |

Compliances

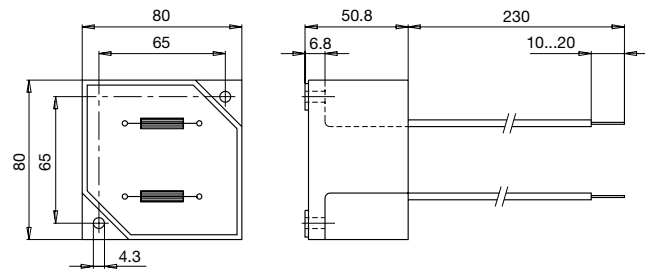
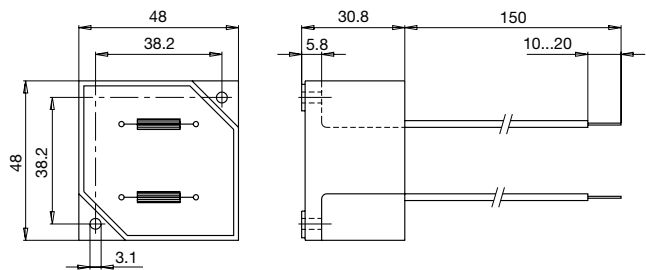
The product complies with following Guide Lines

| Identification | Details | Initiator | Description |
|----------------|------------------------------|-------------|---|
| CE | CE declaration of conformity | SCHURTER AG | The CE marking declares that the product complies with the applicable requirements laid down in the harmonisation of Community legislation on its affixing in accordance with EU Regulation 765/2008. |
| RoHS | RoHS | SCHURTER AG | EU Directive RoHS 2011/65/EU |
| e | China RoHS | SCHURTER AG | The law SJ / T 11363-2006 (China RoHS) has been in force since 1 March 2007. It is similar to the EU directive RoHS. |
| REACH | REACH | SCHURTER AG | On 1 June 2007, Regulation (EC) No 1907/2006 on the Registration, Evaluation, Authorization and Restriction of Chemicals 1 (abbreviated as "REACH") entered into force. |

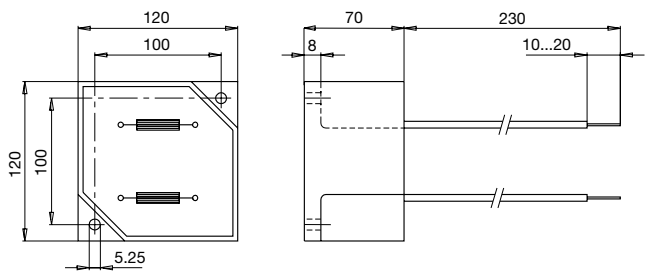
Dimension [mm]

Case 29-2W

Case 31-2W

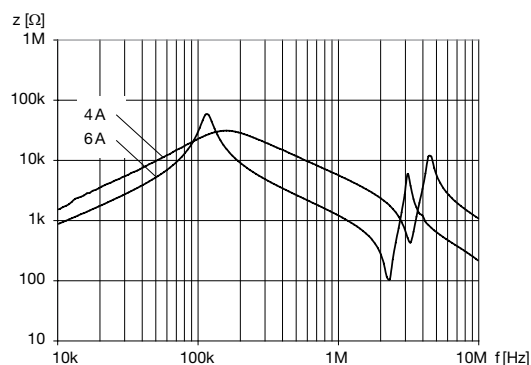


Case 33-2W

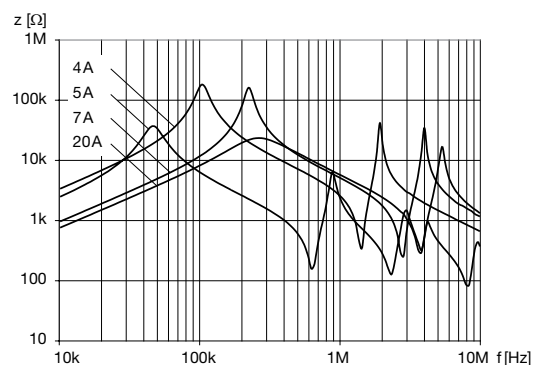


Impedance curves

DKLP-0229-xxxx



DKLP-023x-xxxx



All Variants

| I_n [A] | L_n [mH] | R_{cu} [m Ω] | Power _{loss} [W] | f_{RES} [MHz] | Copper ϕ [mm] | Weight [g] | Housings | Packing unit [pcs.] | Order Number |
|-----------|------------|------------------------|---------------------------|-----------------|--------------------|------------|----------|---------------------|----------------|
| 4 | 30 | 96 | 3 | 0.2 | 0.8 | 145 g | 29-2W | 12 | DKLP-0229-0430 |
| 6 | 14 | 46 | 3.3 | 0.3 | 1 | 145 g | 29-2W | 12 | DKLP-0229-0614 |
| 4 | 60 | 250 | 8 | 0.1 | 0.71 | 477 g | 31-2W | 2 | DKLP-0231-0460 |
| 5 | 40 | 126 | 6.3 | 0.048 | 0.9 | 505 g | 31-2W | 2 | DKLP-0231-0540 |
| 7 | 20 | 62 | 6 | 0.18 | 1.12 | 512 g | 31-2W | 2 | DKLP-0231-0720 |
| 20 | 12 | 19 | 15.2 | 0.16 | 1.8 | 180 g | 33-2W | 1 | DKLP-0233-2012 |

Availability for all products can be searched real-time: <https://www.schurter.com/en/Stock-Check/Stock-Check-SCHURTER>