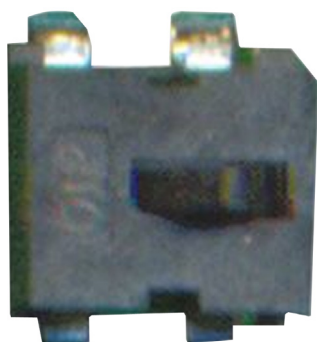


Detector Switch - Card



Specifications:

Mechanical:

Maximum Operating Force	: 40gf
Maximum Stroke	: 3.9mm (stem height 5.3mm) 2.6mm (stem height 3.8mm)
Operating Temperature	: -10°C to +60°C
Storage Temperature	: -20°C to +70°C
External Height	: 2.3mm
External Width	: 4.7mm
External Depth	: 3.8mm

Electrical:

Electrical Life	: 100,000 Cycles
Rating	: 1mA, 5V DC
Maximum Contact Resistance	: 1Ω
Minimum insulation resistance	: 100MΩ at 100V DC
Dielectric Strength	: 100V AC/1minute
Rate Of Operating	: 20 to 25 operation per minute
Contact Arrangement	: 1 pole
Contact Configuration	: SPST-NO

Material:

Cover(1)	: LCP High-temperature thermoplastic Colour : Black
Cover(2)	: LCP High-temperature thermoplastic Colour : Black
Stem	: LCP High-temperature thermoplastic Colour : Black
Contact	: Stainless with silver cladding
Base	: PA9T High-temperature thermoplastic Colour : Black
Contact disc	: Stainless with silver cladding
Terminal	: Brass with silver plated

Soldering Process:

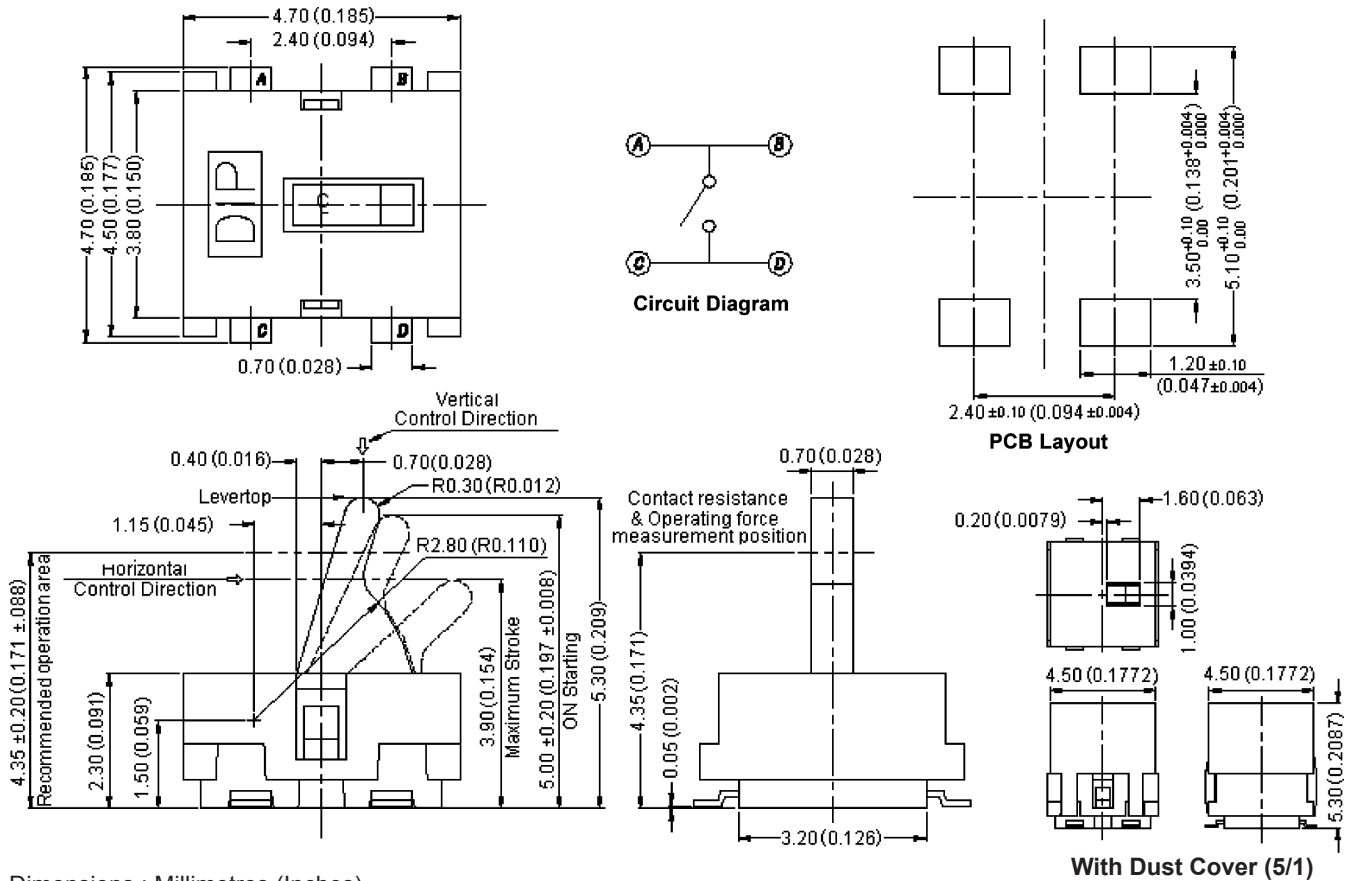
For best results, please follow these recommendations:

Hand Soldering	: Use a soldering iron of 30W, controlled at 608°F (350°C) approximately maximum 5 seconds while applying
Reflow Soldering	: When applying reflow soldering, the peak temperature or the reflow oven should be set to 260°C maximum

Detector Switch - Card



MCATE-1



Dimensions : Millimetres (Inches)

Reflow Temperature Profile:

