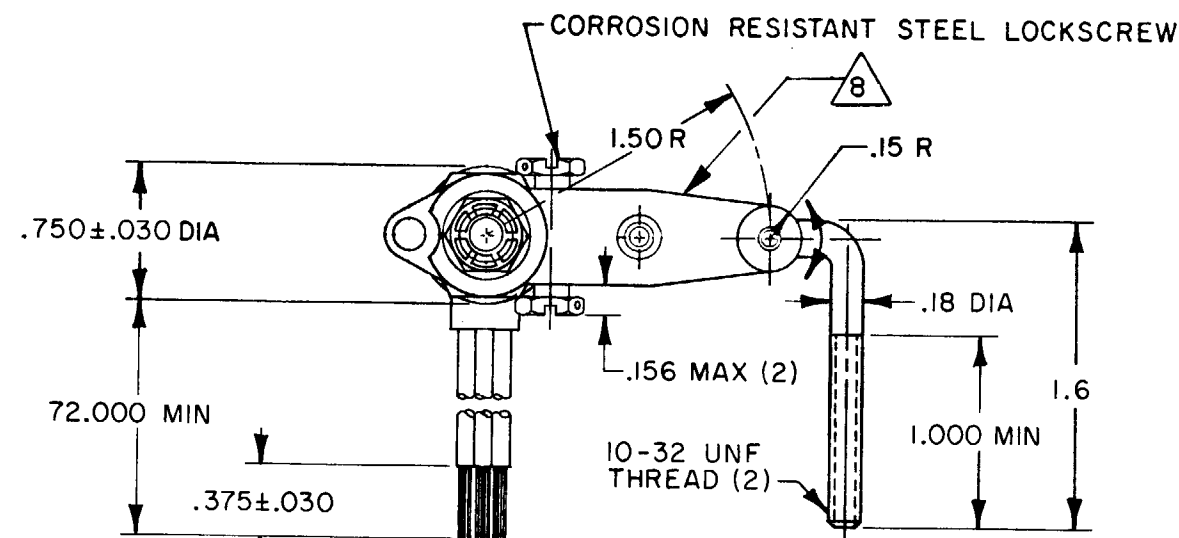


**MICRO SWITCH**  
FREEPORT ILLINOIS U S A  
A DIVISION OF HONEYWELL  
FED. MFG. CODE 91929

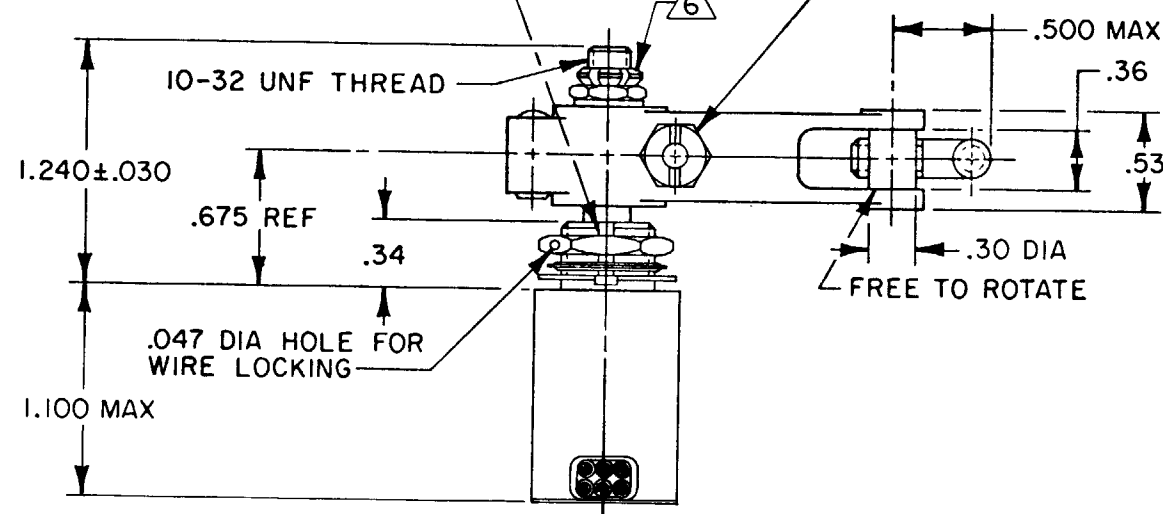
# SWITCH - ENCLOSED

CATALOG LISTING  
**442EN19-6**



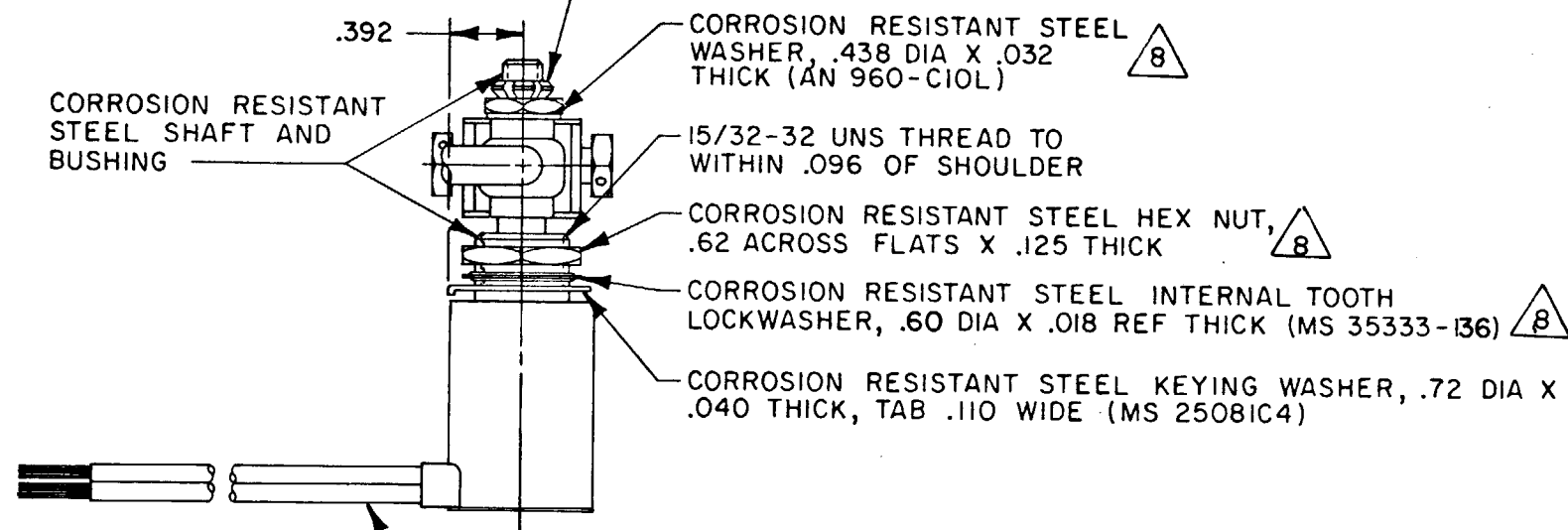
1/4-32 UNEF-2A CORROSION RESISTANT STEEL LOCKING SCREW .312 REF ACROSS FLATS (2)

.076 WIDE X .040 REF DEEP KEYWAY

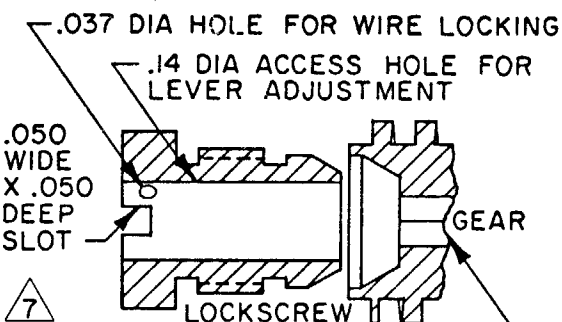


10-32 UNF SELF-LOCKING NYLON INSERT NUT

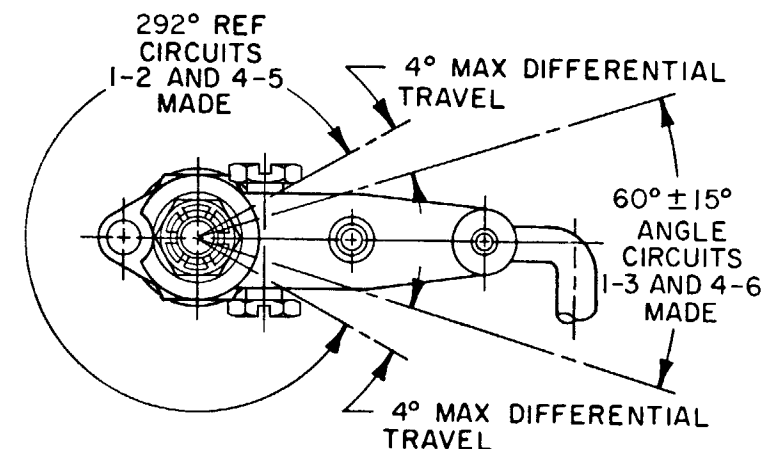
CORROSION RESISTANT STEEL SHAFT AND BUSHING



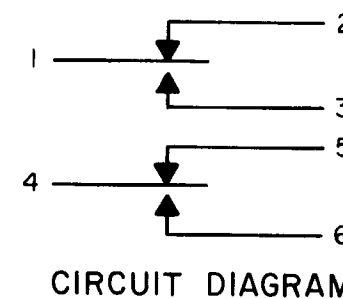
NO. 20 WIRE LEAD PER MIL-W-22759/5 MARKED WITH CIRCUIT IDENTIFICATION AND WIRE GAGE (1-20, 2-20, ETC) PER MIL-W-5088 (6)



THROUGH HEX HOLE TO ACCEPT 3/32 ALLEN WRENCH FOR LEVER ADJMT.  
LEVER MAY BE ADJUSTED FOR AN INFINITE NUMBER OF POSITIONS THRU 360° ADJUSTMENT IS MADE BY LOOSENING THE LOCK NUT AND THEN THE LOCKSCREW AND TURNING GEAR UNTIL LEVER IS IN DESIRED POSITION. LOCKSCREW AND LOCK NUT ON SHAFT IS THEN TIGHTENED TO POSITIVELY LOCK LEVER IN POSITION.  
**LEVER ADJUSTMENT DETAIL**  
SCALE 2 TO 1



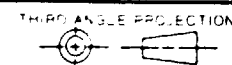
## CHARACTERISTICS



## NOTES

- 1 - ALL EXPOSED PARTS ARE CORROSION RESISTANT
- 2 - SWITCH SEALED PER MIL-S-8805 SYMBOL 4
- 3 - MICRO IDENTIFICATION, CIRCUIT DIAGRAM, AND CAT. LIST. PERMANENTLY MARKED ON SIDE OF SWITCH
- 4 - UNIT PROVIDES NO SHAFT RESTORING TORQUE, THE ACTUATING DEVICE MUST CONTROL MOVEMENT OF THE SHAFT
- 5 - CIRCUIT DIAGRAM SHOWN WITH SWITCH IN OPERATED POSITION
- 6 - DO NOT APPLY MORE THAN 20-25 INCH-POUNDS OF TORQUE WHEN TIGHTENING LOCKING NUT
- 7 - WORM GEAR TO TURN WITH 6 IN-LB MAX TORQUE WITH SCREWS LOCKED OUT TIGHT
- 8 - HARDWARE MAY BE PACKAGED UNASSEMBLED PER MIL-S-8805

THIS DRAWING COVERS A PROPRIETARY ITEM AND IS THE PROPERTY OF MICRO SWITCH, A DIVISION OF HONEYWELL. THIS DRAWING IS NOT TO BE COPIED OR USED WITHOUT THE APPROVAL OF MICRO SWITCH.



SCALE FULL

DO NOT SCALE PRINT

TOLERANCES			
APPLY TO DESIGN UNITS. CONVERSIONS ARE ONLY FOR REFERENCE. UNLESS NOTED, TOLERANCES ARE:			
DIM.	TOL.	DIM.	TOL.
mm	mm/in	in	mm/in
NO PLACES	X	1/64	X
ONE PLACE	X,X	0.010	X,X
TWO PLACES	X,X,X	0.001	X,X,X
THREE PLACES			
ANGLES			

DESIGN UNITS	
SI METRIC	<input type="checkbox"/>
US CUSTOMARY	<input checked="" type="checkbox"/>
RAW MATERIAL - COMMERCIAL STANDARD	
MICRO SWITCH STANDARDS APPLY	
DIMENSIONS ARE TO BE MET BEFORE PROTECTIVE COATINGS ARE APPLIED	
WEIGHT 8.3 OZ MAX	

## CHARACTERISTICS

OPERATING TORQUE-----3 IN LB MAX

## ELECTRICAL DATA

CONTACT ARRANGEMENT

S P D T (2)

LOAD	28 VDC	
	SEA LEVEL	50,000 FT.
RES	7	7
IND	4	2.5
MOTOR	4	
LAMP		

PRETRAVEL  
DIFFERENTIAL TRAVEL  
OVERTRAVEL  
FREE POSITION  
SEE DETAIL

# Mouser Electronics

Authorized Distributor

Click to View Pricing, Inventory, Delivery & Lifecycle Information:

[Honeywell:](#)

[442EN19-6](#)