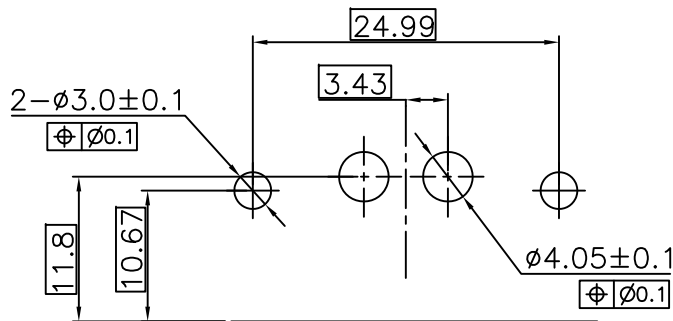
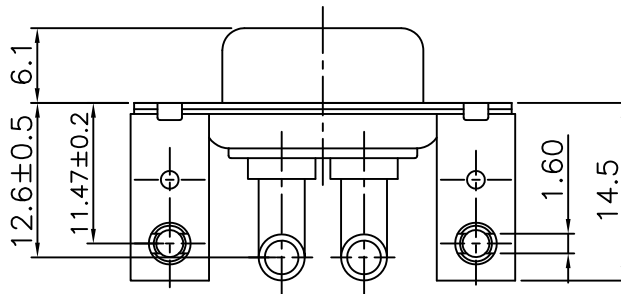
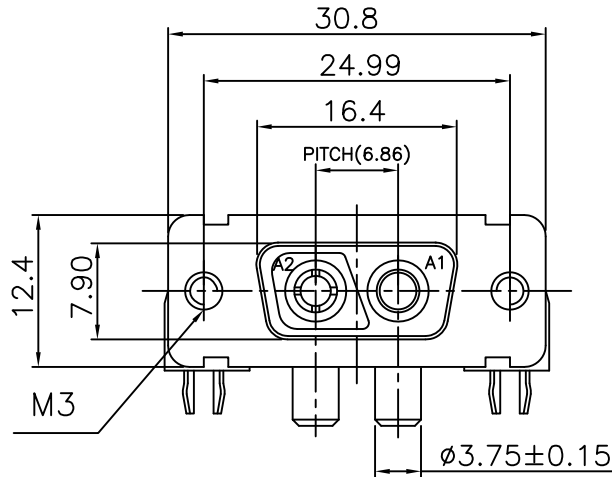
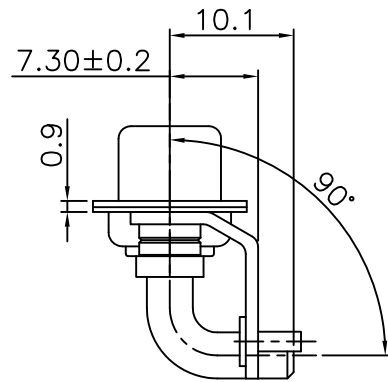
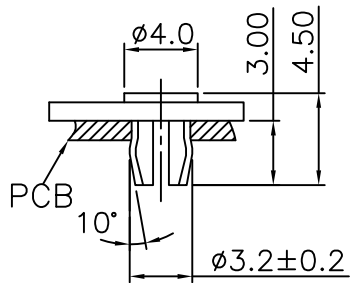


This document is the property of Amphenol Corporation and is delivered on the express condition that it is not to be disclosed, reproduced or used, in whole or in part, for manufacture or sale by anyone other than Amphenol Corporation without its prior consent, & that no right is granted to disclose or to use any information in this document.



RECOMMENDED P.C.B LAYOUT  
(thickness :1.6mm)

Customer Drawing for proposal

## REVISIONS

SYM	ECN	DESCRIPTION	DATE	APPROVED
1			20/11/08	
2		1.Modify insulator and rear nut view 2.Modify tolerance of dimension "10.1" and "12.6"	Sep/26/11	

## D-SUB TECHNICAL DATA

- SHELL : Steel, 2.5um(100u") min tin over 1.25um(50u") min nickel  
BODY : Glass filled thermoplastic.  
Flame retardant to UL94 V-0, Color Black  
CONTACT : Male contact: Brass, Female contact: Bronze  
15u" min gold over 50u" min nickel on mating area  
100u" min tin over 50u" min nickel on solder area  
REAR NUT : Brass, 100u" min tin over 50u" min nickel  
ELECTRICAL : Voltage rating : 300 V Rms to 50 Hz  
Nominal current : 20-40A  
Withstanding Voltage >1000 V RMS at 50 Hz for one minute  
Insulation resistance >5000 M Ohms  
Contact resistance 30 M ohms max  
CLIMATIC : Temperature range -55 °C up to 155°C  
Damp heat 56 days(40 °C-95% HR)  
MARKING : Amphenol...(Series No.)  
Commercial reference  
Manufacturing date

## PRODUCT CODE

L 77TW P 2W2 S C770

L: RoHS Compliance

77TW: tinned shell with receptacle

P: Polar key

C770:  
1.Special footprint  
12.6 mm  
2.tail length 10.1mm  
3.rear screw M3

Contact type:  
S:Female shell

2W2:  
1Femal+1male

## UNLESS OTHERWISE SPECIFIED TOLERANCES

	U.S.	METRIC
.X	+/-	0.50
.XX	+/-	0.30
.XXX	+/-	0.20
FRACTIONS	+/-	2'
ANGLES	+/-	

## FOR MATERIALS AND FINISHES SEE NOTES

## REMOVE SHARP EDGES

## DIMENSIONS

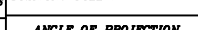
U.S.	INCHES
METRIC	MM

## APPROVAL

DRAWN	Terry.zie	DATE	Sep/26/11
CHECKED	Lik.wang	DATE	Sep/26/11
CHECKED			

## DRAWING FILE :

## ANGLE OF PROJECTION



Amphenol  
Amphenol East Asia Limited

TITLE  
D-SUB 2W2 1 MALE & 1 FEMALE

SIZE DRAWING NO.  
A4 C L77TWP2W2SC770

SCALE NONE SHEET 1 OF 1

A

# Mouser Electronics

Authorized Distributor

Click to View Pricing, Inventory, Delivery & Lifecycle Information:

[Amphenol:](#)

[L77TWP2W2SC770](#)