

IPC-603MB

2U 3-Slot Rackmount Chassis for ATX/MicroATX Motherboard with Front I/O



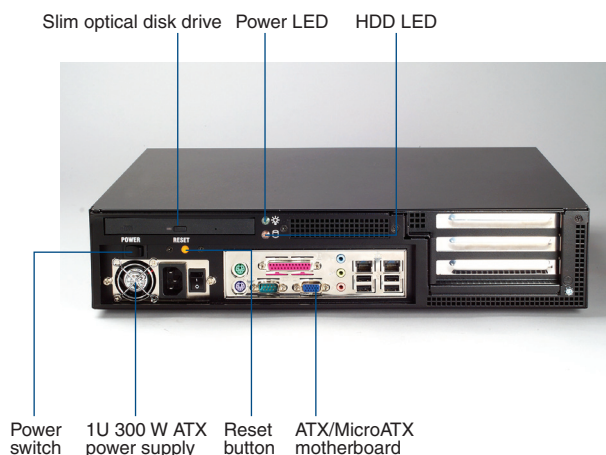
Features

- The best embedded computing system for machinery applications
- Streamlined in-chassis airflow design supporting LGA775 Intel® Pentium® 4 processor up to 3.8 GHz with suggested CPU cooler
- All I/O interfaces are in the front
- Shock resistant disk drive bay designed to hold one slim CD-ROM and one internal 3.5" HDD
- Equipped with 1U 300 W ATX PFC power supply
- Easy-to-replace air filters

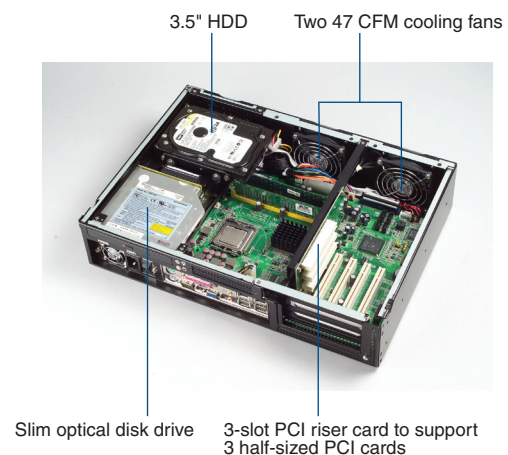
Specifications

| Drive Bay | Slim Optical Disk Drive 3.5" | Front-accessible | Internal |
|--------------------------|--|--|----------------------------------|
| | | 1 | - |
| Cooling | Fan | 2 (8 cm/47 CFM each) | |
| | Air Filters | 3 (85 x 80 mm) | |
| Miscellaneous | Notification LEDs | Power & HDD activity | |
| Environment | Temperature Humidity Vibration (5 ~ 500 Hz) Shock | Operating | Non-Operating |
| | | 0 ~ 40° C (32 ~ 104° F) | -20 ~ 60° C (-4 ~ 140° F) |
| | | 10 ~ 85% @ 40° C, non-condensing | 10 ~ 95% @ 40° C, non-condensing |
| | | 1 Grms | 2 G |
| | | 10 G (with 11 ms duration, half sine wave) | 30 G |
| Physical Characteristics | Dimensions (W x H x D) | 482 x 88 x 308 mm (19" x 3.46" x 12.1") | |
| | Weight | 6.4 kg (14.1 lb) | |

Front View

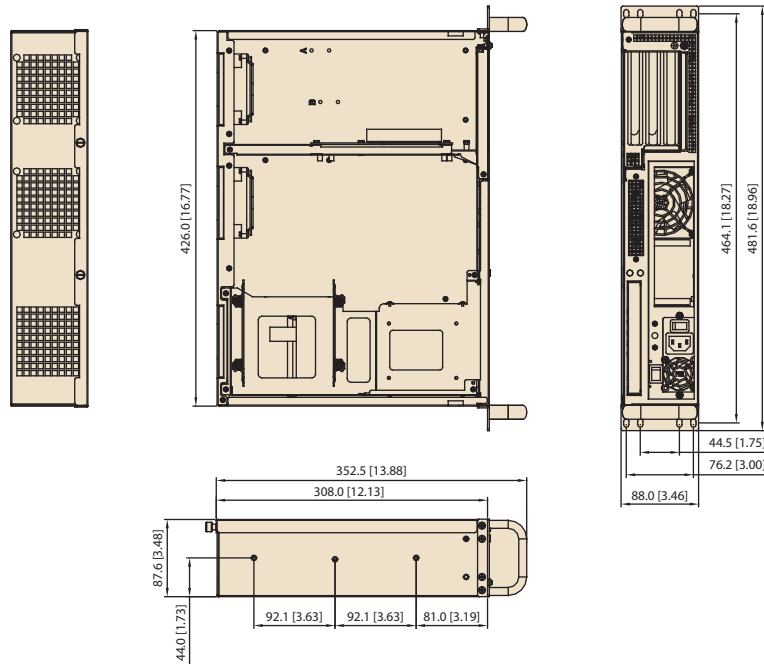


Inside View



Dimensions

Unit: mm [inch]



Ordering Information

| Part Number | Power Supply |
|-----------------|----------------------|
| IPC-603MB0-00XE | Without power supply |
| IPC-603MB0-30ZE | 1757000160G |

Optional Accessories

| Part Number | Description |
|----------------|--|
| 1750000257 | 2U Socket 478 P4 CPU cooler up to 3.4 GHz (89 W) |
| 1960022033T000 | 2U LGA775 P4 CPU cooler up to 3.4 GHz (84 W) |
| 2130004795S000 | Fan filter 80 x 85 x 5 mm |

Power Supply Options

(For detailed power supply specs, please refer to Chapter 7)

| Part Number | Specifications | |
|------------------------|----------------|-----------------------------|
| | Watt | Input |
| 1757000160G (ATX, PFC) | 300 W | AC 100 ~ 240 V (full range) |