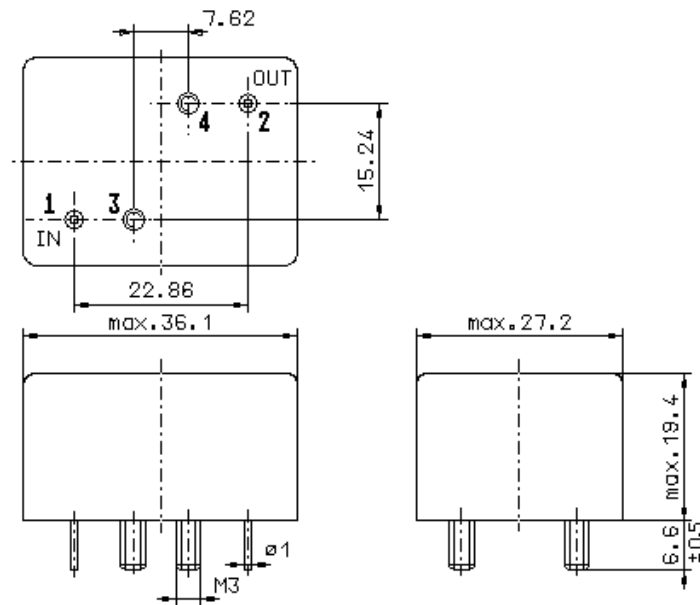


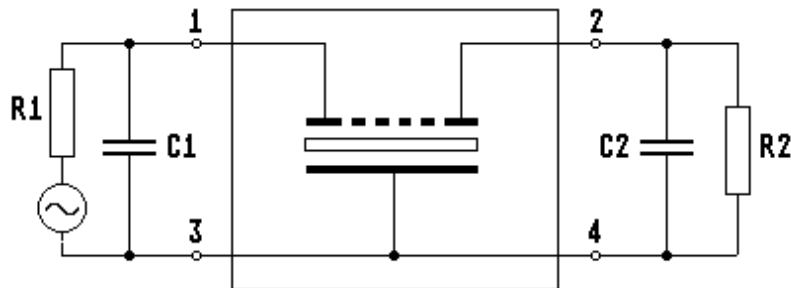
Specification for crystal filter: **QF 2.7648-1500/06**

1. General

1.1. Package:



GM11.0



- | | |
|---|-------------------|
| 1.2. Type name: | QF 2.7648-1500/06 |
| 1.3. Number of poles: | 4 |
| 1.4. Operating temperature range (OTR): | 0°C to +50°C |
| 1.5. Storage temperature range: | -40°C to +90°C |

2. Electric values

- | | |
|--|---------------------------|
| 2.1. Nominal centre frequency (fo): | 2.76480 MHz |
| 2.2. Pass band | |
| 2.2.1. Bandwidth between 3 dB - frequencies: | > fo ± 7.5 kHz |
| 2.2.2. Ripple in pass band at fo ± 6.0 kHz: | < 2.0 dB (peak to peak) |
| 2.2.3. Insertion loss at fo: | < 8.0 dB |

2.3. Stop band

2.3.1. $f_0 - 55 \text{ kHz} / +50 \text{ kHz}$: > 60 dB

2.3.2. $f_0 \pm 100 \text{ kHz}$: > 80 dB

2.3.3. $f_0 \pm 100 \text{ kHz} \dots \pm 500 \text{ kHz}$: > 80 dB (except spurious)

2.4. Terminating impedance (input and output): $50 \Omega // 0 \text{ pF}$

2.5. Maximum input power level

working: -5dBm

non-damaged: +10dBm

2.5.1. Input power level for reference measurements: -10 dBm

3. Marking:

top view

IN
(1)

VECTRON YYWW

QF 2.7648-1500/06

OUT
(2)

4. Environment conditions: Corresponding to VECTRON standard CF001

Edited by: _____ date: _____ name: _____