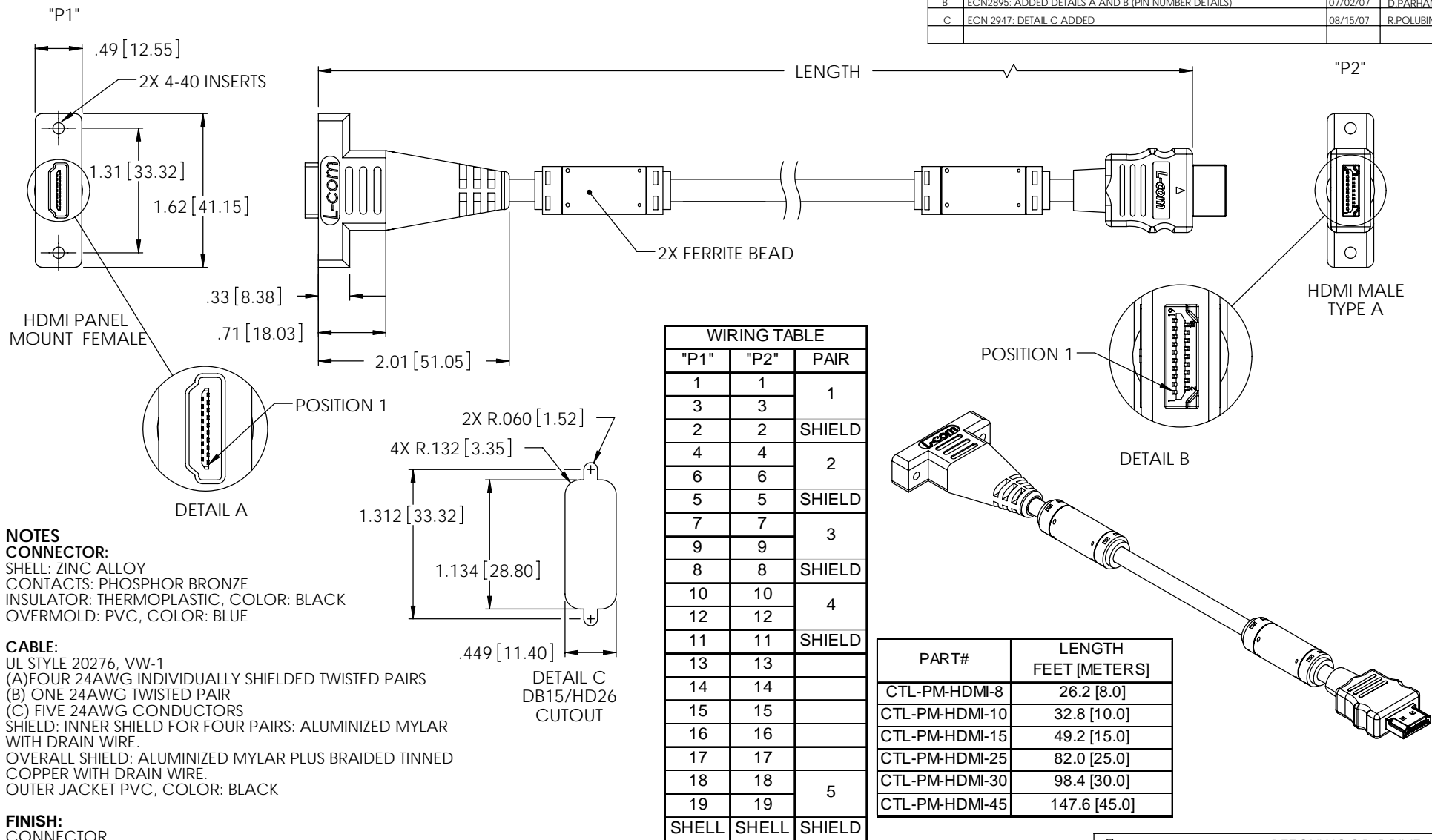


THE INFORMATION CONTAINED IN THIS DRAWING IS THE SOLE PROPERTY OF L-COM, INC. ANY REPRODUCTION IN PART OR WHOLE WITHOUT THE WRITTEN PERMISSION OF L-COM, INC. IS PROHIBITED.

REVISIONS			
REV	DESCRIPTION	DATE	APPROVED
A	INITIAL RELEASE	03/12/07	C.BERUBE
B	ECN2895: ADDED DETAILS A AND B (PIN NUMBER DETAILS)	07/02/07	D.PARHAM
C	ECN 2947: DETAIL C ADDED	08/15/07	R.POLUBINSKI



NOTES

CONNECTOR:

SHELL: ZINC ALLOY
CONTACTS: PHOSPHOR BRONZE
INSULATOR: THERMOPLASTIC, COLOR: BLACK
OVERMOLD: PVC, COLOR: BLUE

CABLE:

UL STYLE 20276, VW-1
(A) FOUR 24AWG INDIVIDUALLY SHIELDED TWISTED PAIRS
(B) ONE 24AWG TWISTED PAIR
(C) FIVE 24AWG CONDUCTORS
SHIELD: INNER SHIELD FOR FOUR PAIRS: ALUMINIZED MYLAR WITH DRAIN WIRE.
OVERALL SHIELD: ALUMINIZED MYLAR PLUS BRAIDED TINNED COPPER WITH DRAIN WIRE.
OUTER JACKET PVC, COLOR: BLACK

FINISH:

CONNECTOR
SHELL: GOLD OVER NICKEL
CONTACTS: GOLD OVER NICKEL

ENVIRONMENTAL:

OPERATING
TEMPERATURE -20°C TO 80°C

MISCELLANEOUS:

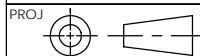
CABLE ASSEMBLIES SHALL BE TESTED FOR CONTINUITY
CABLE ASSEMBLIES SHALL BE PACKAGED
INDIVIDUALLY IN A POLY BAG
CABLE ASSEMBLIES TO BE ROHS COMPLIANT

DIMENSIONS ARE IN INCHES [mm]

UNLESS OTHERWISE SPECIFIED,
TOLERANCES TO BE:

X ±1 [2.5] ANGLES ±2°
.XX ±.05 [1.3]
.XXX ±.005 [0.13]

OVERALL CABLE LENGTH TOL:
≤60 [1524] +3 [76.2] / -0
>60 [1524] +5% / -0%



APPROVALS

DRAWN BY

C.BERUBE

CHECKED BY

J.ROBERTS

APPROVED BY

J.ROBERTS

DATE

01/26/07

03/12/07

03/12/07

CONFIGURATION DETAILS OF
UNDIMENSIONED FEATURES
MAY VARY

L-com
CONNECTIVITY
PRODUCTS

45 BEECHWOOD DRIVE
NORTH ANDOVER, MA
01845

CATEGORY

VIDEO

PRODUCT DESCRIPTION

HDMI MALE TO FEMALE PANEL
MOUNT CABLE (24AWG)

SIZE

A

FSCM NO.

43321

DWG. NO.

CTL-PM-HDMI

REV.

C

SCALE: NONE

CAD FILE: CTL-PM-HDMI.SLDRW

SHEET 1 OF 1