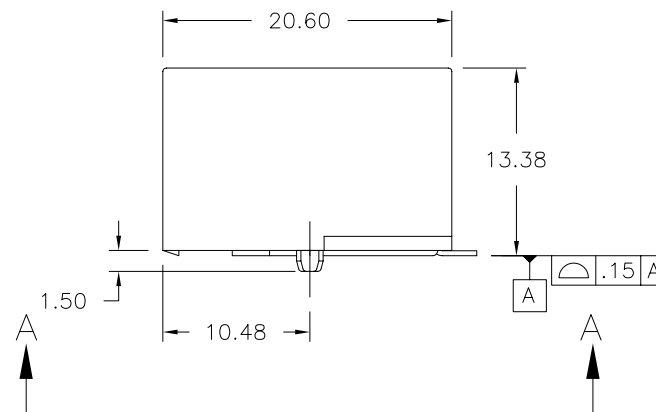
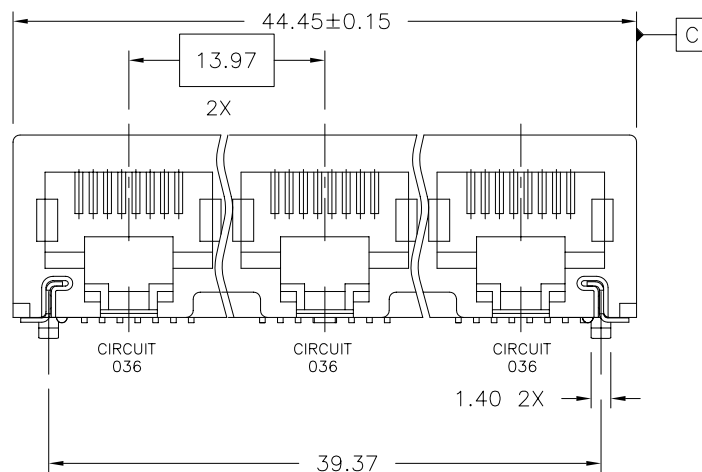
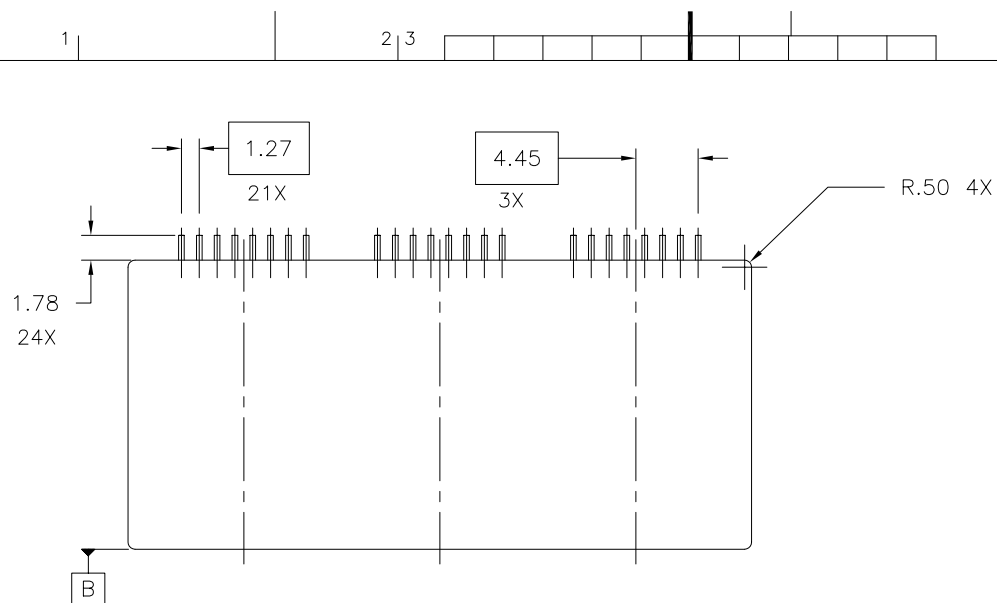




FCIconnect.com

Copyright FCI

PRODUCT NO
SEE TABLE



| | | | | | | | |
|-------------|----------|-----|----------|---------------------------------------|--------------|------------|--|
| mat'l. code | | | | surface | tolerance | projection | product family |
| - | | | | ISO 1302 | ISO 406 | MM | MOD JACK |
| | | | | tolerances unless otherwise specified | | scale 1:1 | title |
| ltr | ecr | no | dr | date | angles | | |
| A | v03-1187 | LP | 9/13/99 | | linear | | |
| B | M06-0224 | ERE | 06/12/06 | | 0° ± 2' | | 5 PORT NET JACK II, RJ45 SMT ASSEMBLY |
| | | | | dr | L. POTTEIGER | 11/12/02 | dwg no |
| | | | | enr | J. KONTOS | 11/12/02 | |
| | | | | chr | J. KONTOS | 11/12/02 | |
| | | | | app | J. KONTOS | 11/12/02 | sheet 1 of 3 size |
| sheet | revision | B | B | B | | | |
| index | sheet | 1 | 2 | 3 | | | |
| | | | | | | | 10019296 |
| | | | | | | | A3 |
| | | | | | | | type |
| | | | | | | | Product Customer Drawing |

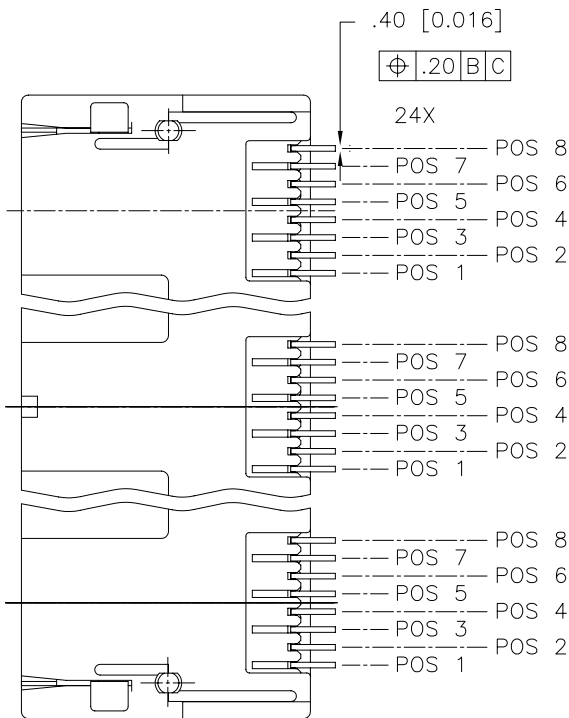
form: A3



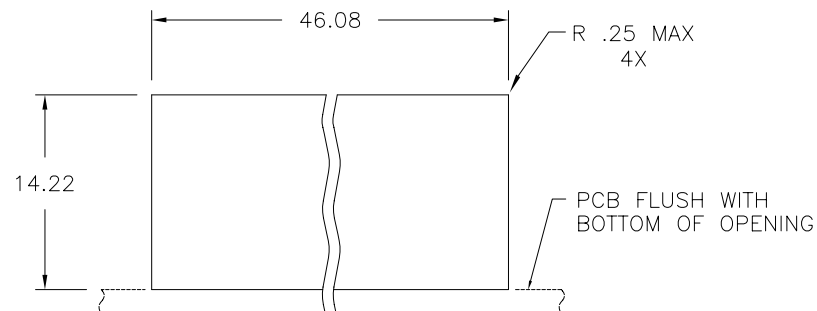
FCIconnect.com

Copyright FCI

PRODUCT NO
SEE TABLE






VIEW A-A



RECOMMENDED PANEL OPENING

NOTES:

1. HOUSING MAT'L: HIGH TEMP. THERMOPLASTIC, COLOR BLACK, UL94V-0.
2. CONTACT MAT'L: COPPER ALLOY
MATING AREA PLATING OPTIONS: SEE TABLE
SOLDER AREA PLATING : 2.54uM MIN. TIN LEAD OVER Ni.
3. ALL DIMENSIONS IN MILLIMETERS.
4. PACKAGING OPTIONS: SEE TABLE

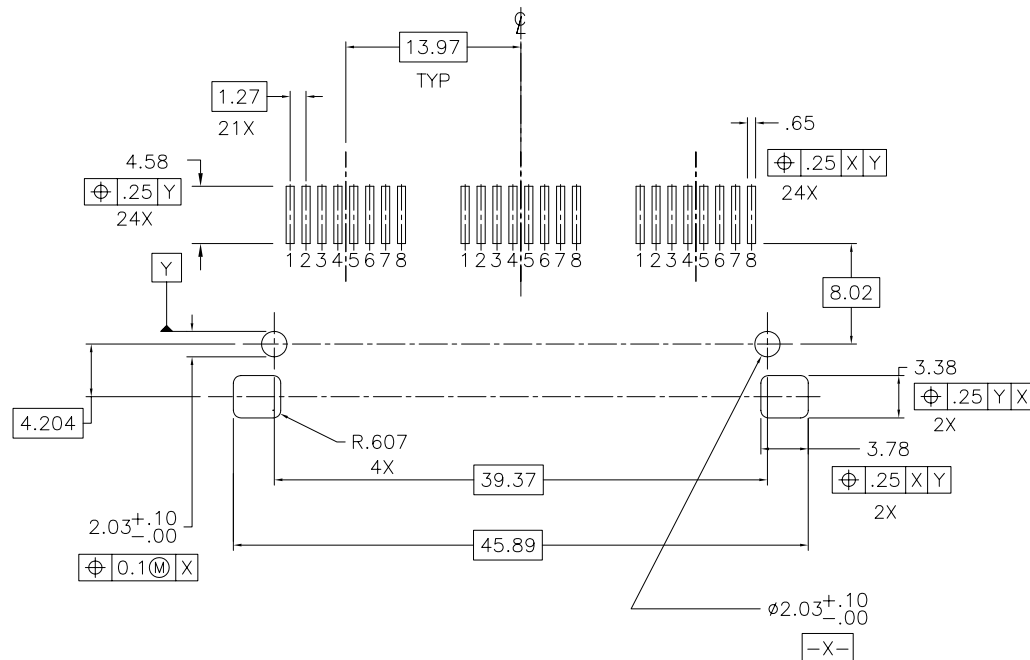
| | | | | | | | | | | | | |
|------------------|-----|----------------|----|------|---------------------------------------|--------------|----------------------------------|---|---|---------|--------------|---------|
| mat'l. code — | | | | | surface ISO 1302 ✓ | | tolerance ISO 406 ISO 1101 | projection  | product family MOD JACK | | | |
| ltr | ecr | no | dr | date | tolerances unless otherwise specified | | | | title | | | |
| B | | | | | angles | linear | .X ±.3 .XX ±.10 .XXX ±.050 |  MM | 5 PORT NET JACK I, RJ45 SMT ASSEMBLY | | | |
| | | | | | 0°±2' | | | | scale 1:1 | | | |
| | | | | | dr | L. POTTEIGER | 11/15/02 |  | dwg no | | sheet 2 of 3 | size |
| | | | | | enr | J. KONTOS | 11/15/02 | | 10019296 | | A3 | |
| | | | | | chr | J. KONTOS | 11/15/02 | | | | | |
| | | | | | appd | J. KONTOS | 11/15/02 | | | | | |
| sheet index | | revision sheet | | | | | | | type | Product | Customer | Drawing |
| | | | | | | | | | | | | |

form: A3

10019296-XY1

| | |
|----------------|--------------|
| PACKAGING CODE | TYPE |
| 0 | TRAY |
| 1 | TAPE ON REEL |

| PLATING CODE | PLATING |
|--------------|-------------|
| 3 | .76uM GOLD |
| 5 | 1.27uM GOLD |



RECOMMENDED P.C.B. LAYOUT
AS VIEWED FROM TOP SIDE (COMPONENT SIDE)

[illegible]