

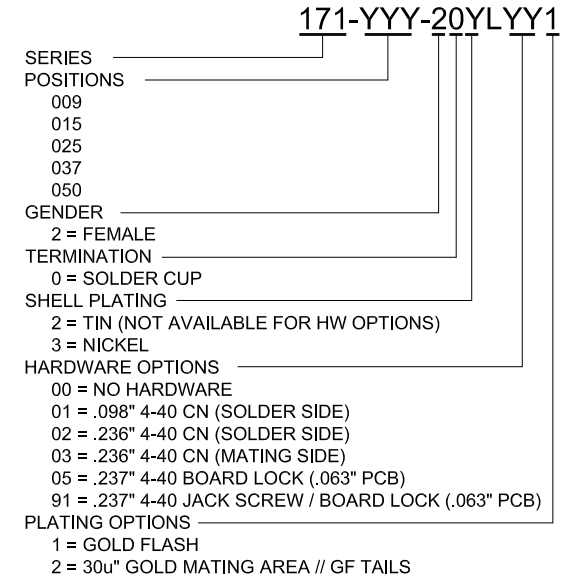
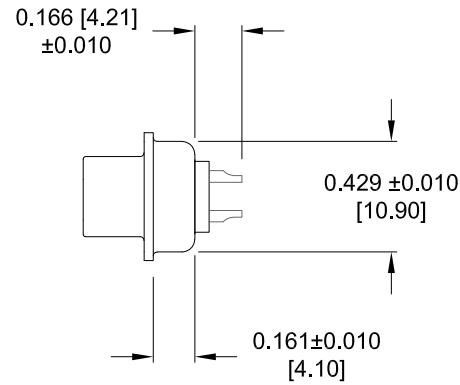
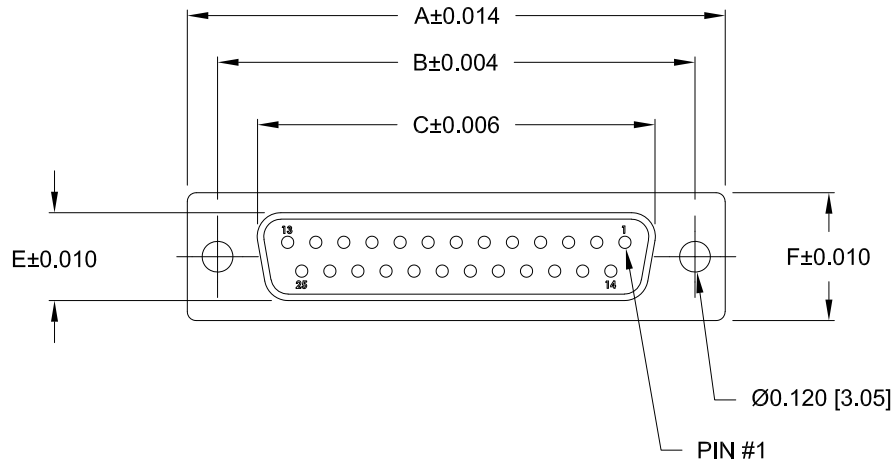
SPECIFICATIONS:

MATERIALS:

SHELL: NICKEL OR TIN PLATED STEEL
 INSULATOR: PBT +30% GF, UL 94V-0, BLACK
 CONTACTS: COPPER ALLOY, GOLD PLATED

ELECTRICALS:

CURRENT RATING: 5 AMPS
 CONTACT RESISTANCE: 15 mOHMS MAX
 INSULATOR RESISTANCE: 1000 MOHMS MIN
 VOLTAGE: 500V AC FOR 1 MINUTE
 TEMPERATURE: -50°C TO +100°C



DIMENSIONS (in/mm)						
POS.	A	B	C	D	E	F
9	1.213	0.984	0.642	0.756	0.311	0.496
	30.80	24.99	16.30	19.20	7.90	12.60
15	1.541	1.312	0.971	1.091	0.311	0.496
	39.15	33.32	24.65	27.70	7.90	12.60
25	2.087	1.853	1.512	1.618	0.311	0.496
	53.00	47.04	38.40	41.10	7.90	12.60
37	2.728	2.500	2.157	2.256	0.311	0.496
	69.30	63.50	54.80	57.30	7.90	12.60
50	2.638	2.406	2.055	2.169	0.429	0.602
	67.00	61.00	52.20	55.10	10.90	15.30

WILL ACCEPT 28-20 AWG CONDUCTORS

RoHS COMPLIANT

UNITS = INCHES [MM] DO NOT SCALE FROM DRAWING



THESE DRAWINGS AND SPECIFICATIONS ARE THE PROPERTY OF NorComp AND SHALL NOT BE REPRODUCED, COPIED OR USED AS THE BASIS FOR THE MANUFACTURE OR SALE OF APPARATUS WITHOUT WRITTEN PERMISSION.

DRAWN:

J. KADEL

DATE:

07/24/2018

NorComp

SCALE:

NTS

SHEET

OF

1 2

REV

14

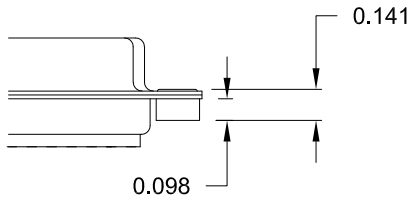
DWG NO.

171-YYY-20YLYY1

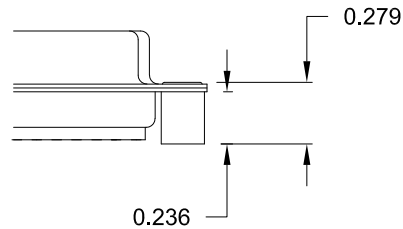
TOLERANCE:
ALL DIMENSIONS ARE ± 0.010

ALL CLINCH-NUTS ARE 4-40 INTERNAL THREADS

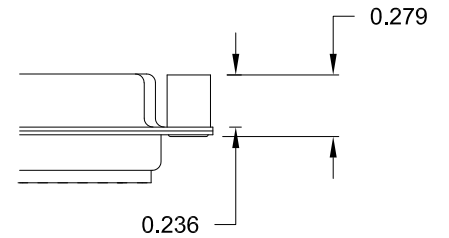
01X 0.098" (SOLDER SIDE)



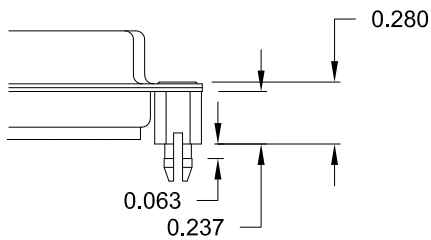
02X 0.236" (SOLDER SIDE)



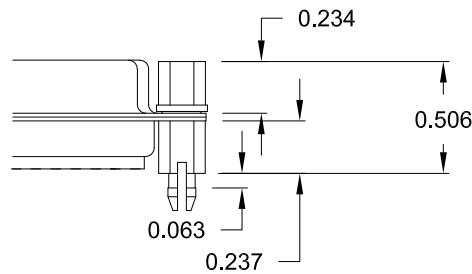
03X..... 0.236" (MATING SIDE)



05X 0.237" (SOLDER SIDE)



91X 0.237" (SOLDER SIDE)



NOTE: 4-40 FEMALE SCREW LOCK IS REMOVABLE

RoHS COMPLIANT

UNITS = INCHES

DO NOT SCALE FROM DRAWING



THESE DRAWINGS AND SPECIFICATIONS ARE THE PROPERTY OF NorComp AND SHALL NOT BE REPRODUCED, COPIED OR USED AS THE BASIS FOR THE MANUFACTURE OR SALE OF APPARATUS WITHOUT WRITTEN PERMISSION.

DRAWN:

J. KADEL

DATE:

07/24/2018

NorComp

SCALE:
NTS

SHEET OF
2 2

REV
14

DWG NO.

171-YYY-20YLYY1