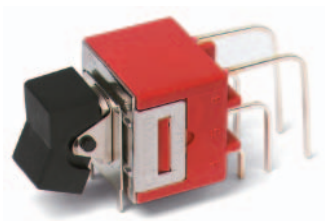


# 9000 Series

## Power Rocker and Lever Handle Switches



### Features/Benefits

- **Thermoset UL 94V-0 housing**
- **Rugged construction**
- **Variety of actuator and termination options**
- **RoHS compliant**

### Typical Applications

- **Small equipment**
- **Shut-off switch**

UL 61058-1



### Specifications

CONTACT RATING:

9201 Model:

- GP (general purpose)
- 6 AMPS 125 VAC 50/60 Hz T85 10,000 cycles (10E3)
- 3 AMPS 250 VAC 50/60 Hz T85 10,000 cycles
- R (resistive)
- 6 AMPS 30 VDC T85 10,000 cycles

9221 Model:

- GP (general purpose)
- 10 AMPS 125 VAC 50/60 Hz T85 10,000 cycles
- 5 AMPS 250 VAC 50/60 Hz T85 10,000 cycles
- R (resistive)
- 10 AMPS 30 VDC T85 10,000 cycles

ELECTRICAL LIFE: 25,000 make-and-break cycles at full load.

CONTACT RESISTANCE: Below 10 m  $\Omega$  typ. initial @ 2–4 V DC, 100 mA.

INSULATION RESISTANCE: 10<sup>9</sup>  $\Omega$  min.

DIELECTRIC STRENGTH: 2,500 Vrms min. @ sea level.

OPERATING TEMPERATURE: –30°C to 85°C.

SOLDERABILITY: Per MIL-STD-202F method 208D, or EIA RS-186E method 9 (1 hour steam aging).

### Materials

CASE: Diallyl phthalate (DAP) (UL 94V-0).

ACTUATOR: Nylon, black standard.

FRAME-REAR MOUNT OPTIONS: Spring steel, black.

BUSHING: Brass, nickel plated.

HOUSING: Stainless steel.

SWITCH SUPPORT: Brass or steel, matte-tin plated.

MOUNTING BRACKET: Stainless steel.

END CONTACTS: 9201 Model: Coin silver, silver plated.  
9221 Model: Silver cadmium oxide.

CENTER CONTACTS: Copper alloy, silver plated

ALL TERMINALS: 9201 Model: Copper alloy, silver plated.  
9221 Model: Copper alloy, matte-tin plated.

TERMINAL SEAL: Epoxy.

HARDWARE: Nut, Screw & Lockwasher: Stainless steel. Standoff: Nylon standard, aluminum available, consult Customer Service Center.

\*Cadmium used in electrical contacts is acceptable for RoHS.

**NOTE:** Any models supplied with Q contact material are RoHS compliant.

**NOTE:** Specifications and materials listed above are for switches with standard options. For information on specific and custom switches, consult Customer Service Center.

### Build-A-Switch

To order, simply select desired option from each category and place in the appropriate box. Available options are shown and described on pages G-53 through G-56. For additional options not shown in catalog, consult Customer Service Center.



#### Switch Function

- 9201** DP On-On, 6 Amps
- 9221** DP On-On, 10 Amps

#### Actuator

- J1** Rocker
- J2** Lever
- J3** Rocker
- J37** Rocker with metal frame

#### Terminations

- Z** Solder lug (9201 only)
- AV2** Vertical right angle, PC thru-hole (9201 only)
- C** PC Thru-hole (9201 only)
- Z4** Quick connect

#### Contact Material

- Q** Silver

#### Seal

- E** Epoxy
- D** No Seal

#### Actuator Color

- 2** Black
- 1** White
- 3** Red

#### Frame Color

- 2** Black
- NONE** No frame color required

Rocker



Dimensions are shown: Inches (mm)

Specifications and dimensions subject to change

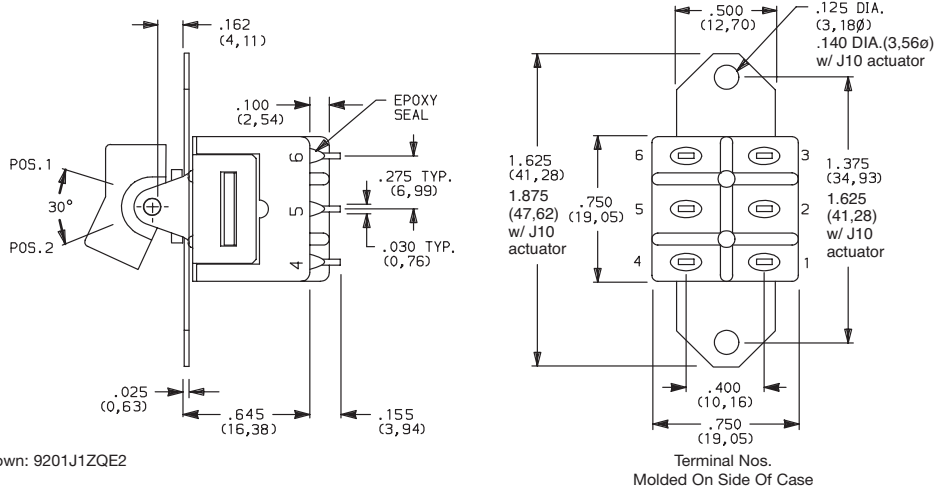
# 9000 Series Power Rocker and Lever Handle Switches

## SWITCH FUNCTION



| NO. POLES | MODEL NO. | RATING* | SWITCH FUNCTION |        | CONNECTED TERMINALS |         | SCHEMATIC |
|-----------|-----------|---------|-----------------|--------|---------------------|---------|-----------|
|           |           |         | POS. 1          | POS. 2 | POS. 1              | POS. 2  |           |
|           |           |         |                 |        |                     |         |           |
| DP        | 9201      | 6 AMPS  | ON              | ON     | 2-3,5-6             | 2-1,5-4 |           |
|           | 9221      | 10 AMPS | ON              | ON     |                     |         |           |

### DPDT



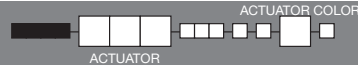
All 9000 Series models meet international dimensional and electrical requirements.



\* See CONTACT MATERIAL, page G-55, for complete ratings.

9221 model must be ordered with Z4 terminations and D seal option.

## ACTUATOR-PANEL MOUNT

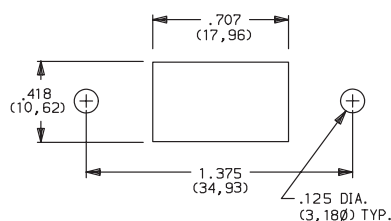


| OPTION CODE | ACTUATOR COLOR |
|-------------|----------------|
| 2           | BLACK          |
| 1           | WHITE          |
| 3           | RED            |

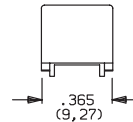
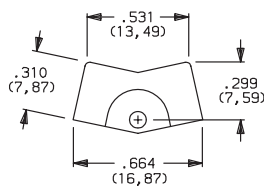
Finish: Matte. Other colors, custom actuator markings and legends available, consult Customer Service Center.

**NOTE:** Hardware: two each—mounting screws, nuts, lockwashers and standoffs for 1/8 inch thick panel are supplied standard on all switches with panel mounting brackets. Actuators available separately, see page G-55-56. Hardware available separately, see Technical Data section of this catalog.

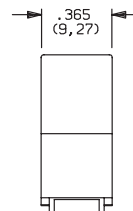
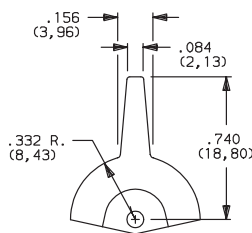
### PANEL MOUNTING



### J1 ROCKER



### J2 LEVER



Dimensions are shown: Inches (mm)

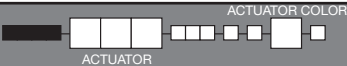
Specifications and dimensions subject to change



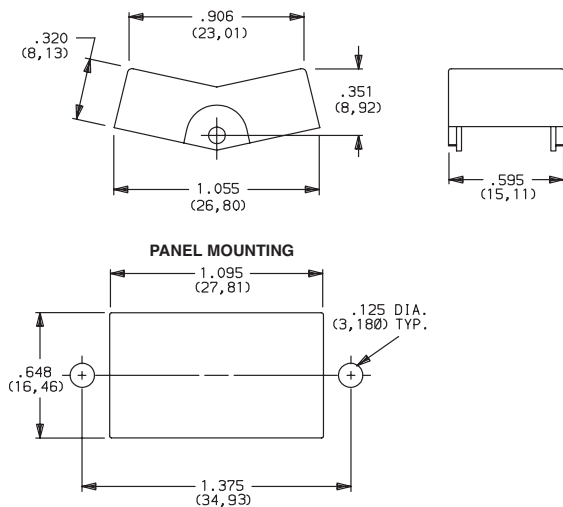
# 9000 Series

## Power Rocker and Lever Handle Switches

### ACTUATOR-PANEL MOUNT



#### J3 ROCKER

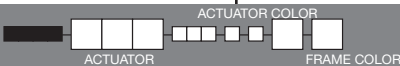


| OPTION CODE | ACTUATOR COLOR |
|-------------|----------------|
| 2           | BLACK          |
| 1           | WHITE          |
| 3           | RED            |

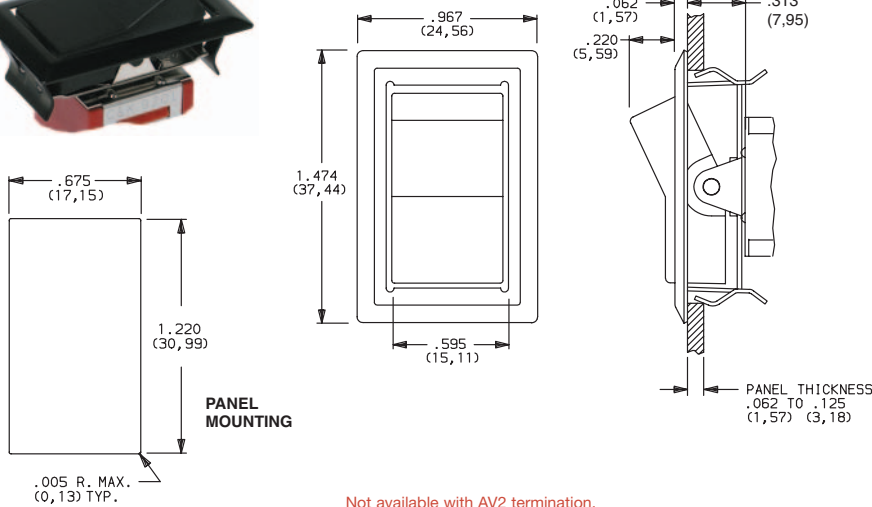
Actuator finish: Matte. Other colors, custom actuator markings and legends available, consult Customer Service Center.

**NOTE:** Actuators available separately, see page G-55-56. Hardware: two each—mounting screws, nuts, lockwashers and standoffs for 1/8 inch thick panel are supplied standard on all switches with panel mounting brackets. Hardware available separately, see Technical Data section of this catalog.

### ACTUATOR-REAR MOUNT



#### J37 ROCKER WITH METAL FRAME



| OPTION CODE | ACTUATOR COLOR |
|-------------|----------------|
| 2           | BLACK          |
| 1           | WHITE          |
| 3           | RED            |

| OPTION CODE | FRAME COLOR |
|-------------|-------------|
| 2           | BLACK       |

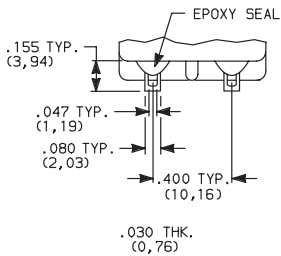
Actuator finish: Matte. Frame finish: Gloss. Other colors, custom actuator markings and legends available, consult Customer Service Center.

**NOTE:** Actuators & frames available separately, see page G-55-56. Hardware: two each—mounting screws, nuts, lockwashers and standoffs for 1/8 inch thick panel are supplied standard on all switches with panel mounting brackets. Hardware available separately, see Technical Data section of this catalog.

### TERMINATIONS

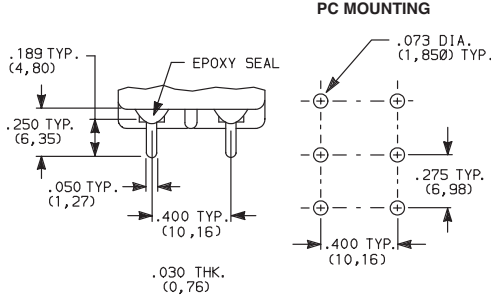


#### Z SOLDER LUG



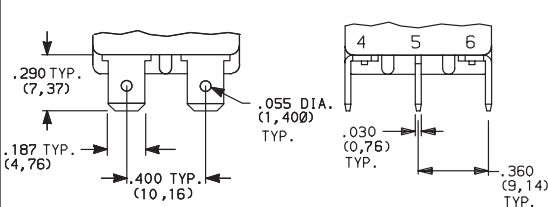
9201 Only

#### C PC THRU-HOLE



9201 Only

#### Z4 QUICK CONNECT



9201 and 9221

**NOTE:** Only termination available with 9221 model. Must be ordered with D seal option. Mating terminal standard Nema .187" quick connect.



Third Angle Projection

Dimensions are shown: Inches (mm)

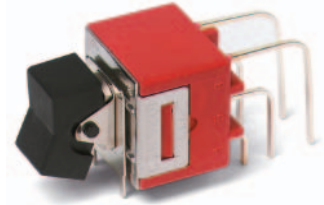
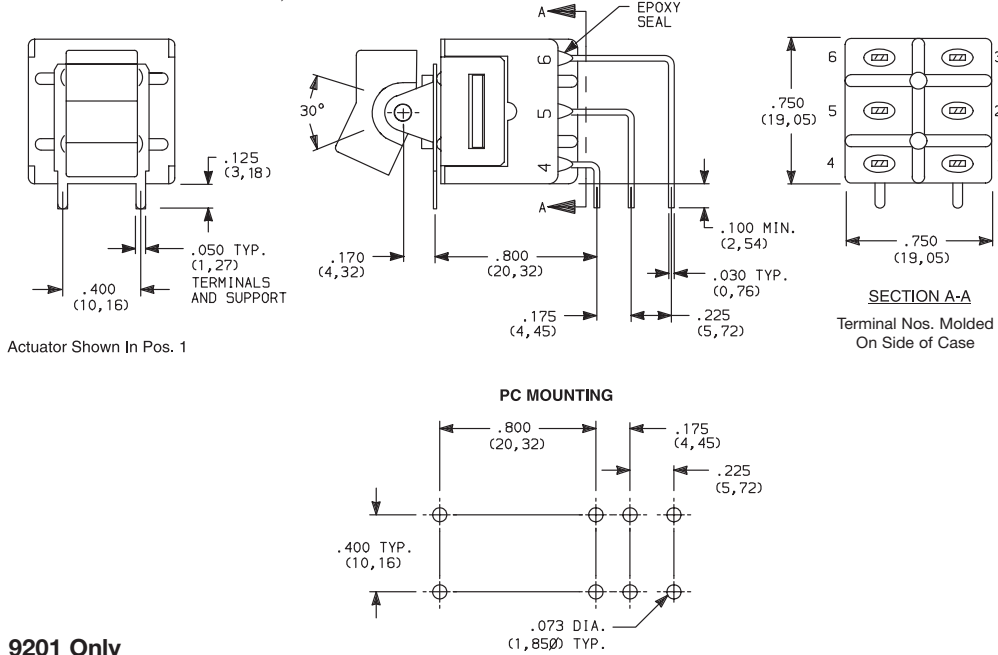
Specifications and dimensions subject to change

www.ck-components.com

# 9000 Series Power Rocker and Lever Handle Switches

## TERMINATIONS

### AV2 VERTICAL RIGHT ANGLE, PC THRU-HOLE



9201J1AV2QE2  
Vertical Actuation  
DPDT

### 9201 Only

**NOTE:** Terminal bend radii and lead-in manufacturing option.  
Terminal spacing greater than 3mm at all points.

## CONTACT MATERIAL

| OPTION CODE | MODEL | CONTACT MATERIAL                      | TERMINAL PLATING             | RATINGS   |
|-------------|-------|---------------------------------------|------------------------------|---|
| Q           | 9201  | SILVER <sup>1,2</sup>                 | SILVER OR TIN <sup>2,5</sup> | GP (general purpose) 6 AMPS 125 VAC 50/60 Hz T85 10,000 cycles (10E3)<br>3 AMPS 250 VAC 50/60 Hz T85 10,000 cycles<br>R (resistive) 6 AMPS 30 VDC T85 10,000 cycles |
|             | 9221  | SILVER CADMIUM OXIDE <sup>3,4,6</sup> | TIN <sup>5</sup>             | GP (general purpose) 10 AMPS 125 VAC 50/60 Hz T85 10,000 cycles<br>5 AMPS 250 VAC 50/60 Hz T85 10,000 cycles<br>R (resistive) 10 AMPS 30 VDC T85 10,000 cycles      |

\* Note: See Technical Data section of this catalog for RoHS compliant and compatible definitions and specifications.

- <sup>1</sup> END CONTACTS: Coin silver, silver plated.
- <sup>2</sup> CENTER CONTACTS & ALL TERMINALS: Copper alloy, silver plated.
- <sup>3</sup> END CONTACTS: Silver cadmium oxide.
- <sup>4</sup> CENTER CONTACTS: Copper alloy, silver plated.
- <sup>5</sup> Z4 TERMINALS ONLY: Copper alloy, tin plated.
- <sup>6</sup> Cadmium used for electrical contacts is acceptable for RoHS.

**NOTE:** Any models supplied with Q contact material is RoHS compliant.

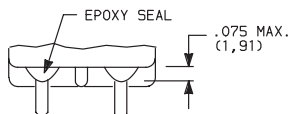
9221 model must be ordered with Z4 terminations and D seal option.

All 9000 Series models meet international dimensional and electrical requirements.



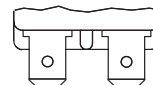
## SEAL

### E EPOXY SEAL



Not available with 9221 model or Z4 terminations.

### D NO EPOXY SEAL



Must be ordered with 9221 model and Z4 termination.

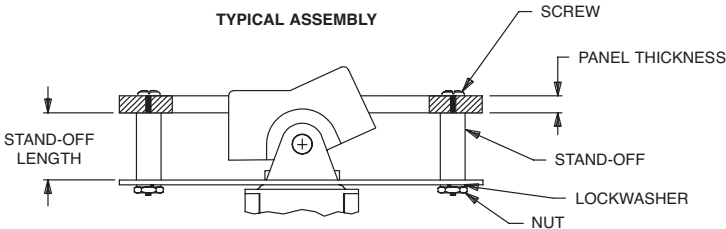


# 9000 Series

## Power Rocker and Lever Handle Switches



AVAILABLE HARDWARE

Panel mounting hardware for rocker and lever handle switches is available separately. Mounting hardware consists of two screws, two nuts, two standoffs and two lockwashers per switch, and is available for panel thicknesses of 1/16, 3/32 and 1/8 inch. See part numbers below.



J1 & J2 actuators

| PART NO.  | PANEL THK.      | STANDOFF LENGTH |
|-----------|-----------------|-----------------|
| 761101000 | 1/16 IN. (1,59) | .295 (7,49)     |
| 761102000 | 3/32 IN. (2,38) | .264 (6,71)     |
| 761103000 | 1/8 IN. (3,18)  | .233 (5,92)     |

|   |   |   |
|---|---|---|
| <p><b>J1 Actuator</b></p>  <p><b>PART NO.</b><br/> <b>776A01000</b> WHITE<br/> <b>776A02263</b> BLACK<br/> <b>776A03000</b> RED</p> <p>Material: Nylon<br/>                     Finish: Matte</p> | <p><b>J2 Actuator</b></p>  <p><b>PART NO.</b><br/> <b>760501000</b> WHITE<br/> <b>760502263</b> BLACK<br/> <b>760503000</b> RED</p> <p>Material: Nylon<br/>                     Finish: Matte</p> | <p><b>J3, J37 Actuators</b></p>  <p><b>PART NO.</b><br/> <b>766601000</b> WHITE<br/> <b>766602263</b> BLACK<br/> <b>766603000</b> RED</p> <p>Material: Nylon<br/>                     Finish: Matte</p> |
| <p><b>Frame for J37 Actuators</b></p>  <p><b>PART NO.</b><br/> <b>445400746</b> BLACK ENAMEL<br/> <b>445400747</b> WHITE ENAMEL</p> <p>Material: Spring Steel</p>                                | <p><b>NOTE:</b> Additional nuts, screws and lockwashers available separately, see Technical Data section of this catalog.</p> <p>Other colors available, consult Customer Service Center.</p>   |   |

Rocker



Dimensions are shown: Inches (mm)  
 Specifications and dimensions subject to change