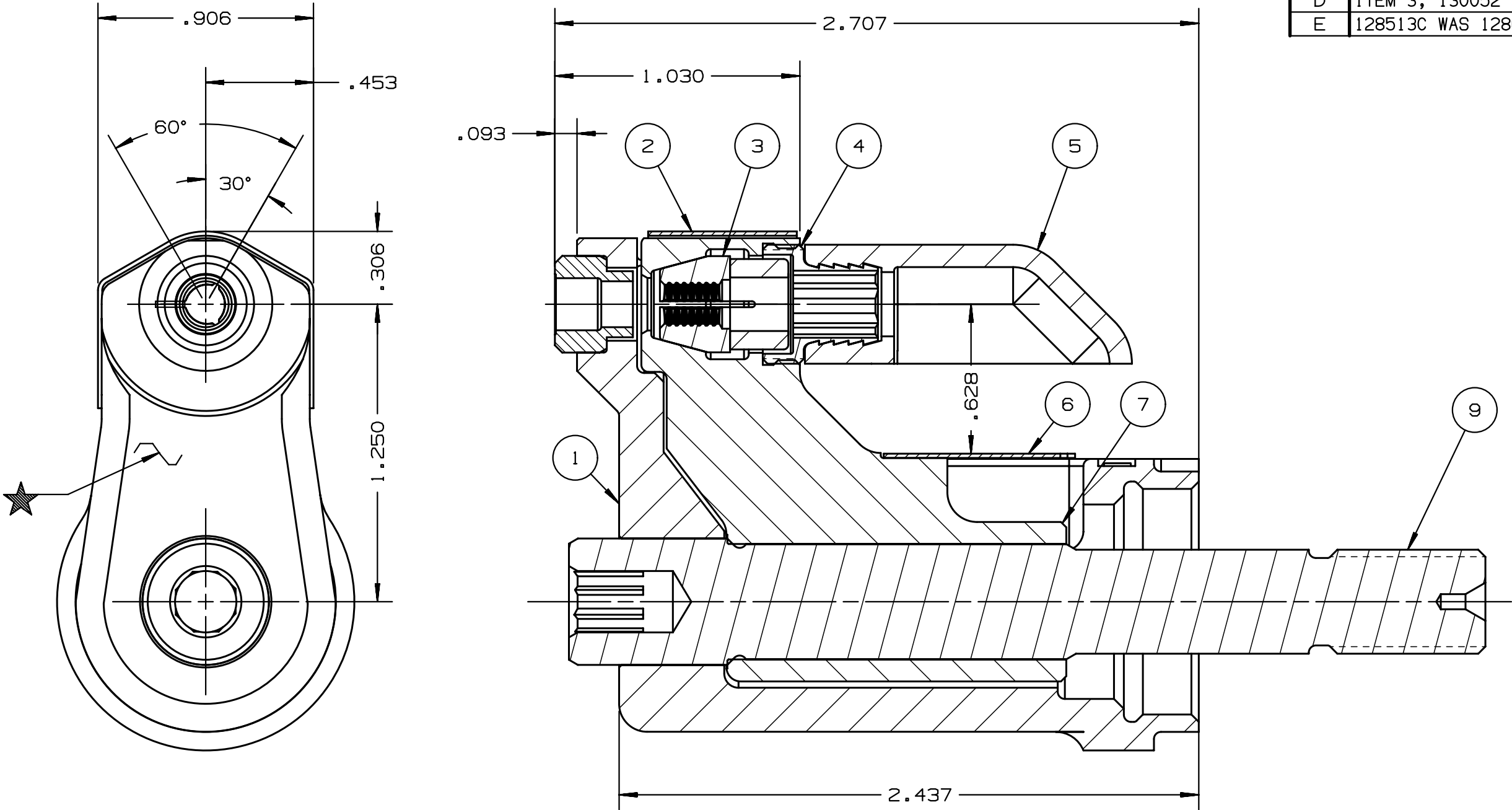


REV	DESCRIPTION	DET	DATE
D	ITEM 3, 130052 WAS 128071	EL	11/11/11
E	128513C WAS 128623C. ADDED 1284887	JJC	07/31/12



- NOTES:
- 1 MAXIMUM RECOMMENDED STROKE: .500.
 - 2 FOR USE WITH 206-375 TOOL, FOR OTHER TOOLS AND/OR STROKE COMBINATIONS, REFER TO STROKE LIMITER CHART (HK1122) OR CONSULT AN AFS/HUCK SALES SPECIALIST.
 - 3 SHIP WITH: STOP 126747 AND DEFLECTOR 126748-1.
 - 4 128623C ASSEMBLY CONSISTS OF 128513C COLLET AND 128487 DRAWBAR.
 - 5 127131C ASSEMBLY CONSISTS OF 127077C ANVIL HOLDER AND 120308 ANVIL INSERT.

(E)	128487	1	DRAWBAR	9
	126748-1	1	UNITIZED DEFLECTOR	8
(E)	128513C	1	COLLET	7
	126745	1	GUARD	6
	120095	1	DEFLECTOR	5
	122912	1	BARBED RETAINER	4
	130052	1	UNITIZED CHUCK JAW	3
	127582	1	TOP GUARD	2
	127131C	1	ANVIL ASSEMBLY	1
	PART NO.	QTY	DESCRIPTION	ITEM

IDENTIFICATION PER SPEC 42-311: ★ ETCH		HUCK INTERNATIONAL, INC., I.S.D 1 CORPORATE DR KINGSTON, NEW YORK 12401	
ITAR/ECCN: EAR99		CLEARANCE NOSE ASSEMBLY -08 ASP	
SCH B#: 8467.99.0190		FINAL ASSY: -	
HTS: 8467.99.0190		ENG: MVM CK:	DATE: 10/12/04 SCALE: 2:1
		B	99-3729C