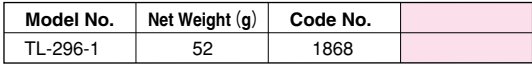
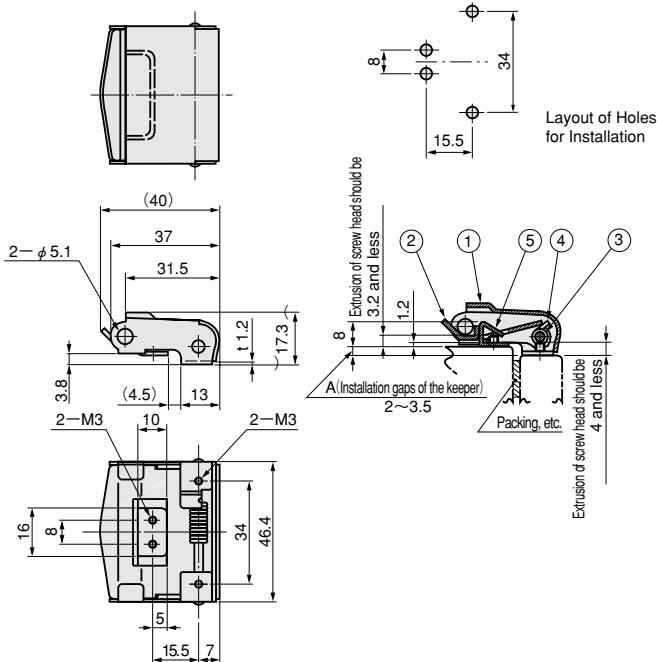


**STAINLESS  
STEEL  
WARE**



No.	Part Name	Material	Finish	Quantity
1	Cover	SUS304	Barrel Polishing	1
2	Lock			1
3	Shaft		_____	1
4	Spring	SUS304WPB		1
5	Keeper	SUS304	Barrel Polishing	1

Control boards / Control boxes /  
Boxes for gage boards, etc.



# TL-296-2 Snap In Latch



Model No.	Net Weight (g)	Code No.	
TL-296-2	54	1869	

## Parts List

No.	Part Name	Material	Finish	Quantity
1	Cover	SUS304	Barrel Polishing	1
2	Lock			1
3	Shaft			1
4	Spring	SUS304WPB		1
5	Keeper	SUS304	Barrel Polishing	1

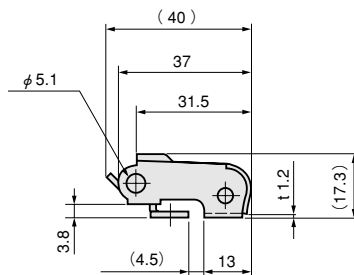
## Characteristic

It is a all stainless steel made catch, using SUS304 to have an excellent performance on corrosion-resistance. It can be opened and closed by one touch operation. Using a padlock, TL-285J-2 or other, it can be locked. It suits for boxes where the surface of the panel is flattened.

## Operational Instruction

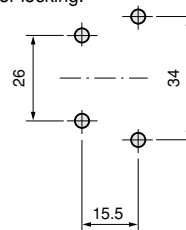
Lift up the lock first before opening the lid.

And close the lid until the lock comes to the position for locking.



## Application

Control boards / Control boxes / Boxes for gage boards, etc.



Layout of Holes for Installation

