

Customer Information Sheet

DRAWING No.: M80-5S2XXXXMQ

IF IN DOUBT - ASK

©

NOT TO SCALE

THIRD ANGLE PROJECTION

ALL DIMENSIONS IN mm

SPECIFICATIONS:

MATERIAL:

MOULDING = GLASS-FILLED PPS,
UL94V-0, BLACK

CONTACTS, STRAIN RELIEF STRAPS = BRASS

JACKSCREW = STAINLESS STEEL

FINISH:

CONTACTS:

05 = 0.75µ 100% GOLD

22 = 0.75µ GOLD ON CONTACT AREA,
0.3µ90/10 TIN/LEAD ON TAILS

42 = 0.75µ GOLD ON CONTACTS AREA,
0.3µ 100% TIN OVER NICKEL ON TAILS

STRAIN RELIEF STRAPS:

2.5µ MIN 100% TIN OVER 1.6µ MIN NICKEL

ELECTRICAL:

CURRENT RATING AT 25°C = 3.0A MAX

CURRENT RATING AT 85°C = 2.2A MAX

WORKING VOLTAGE = 800V AC/DC

VOLTAGE PROOF = 1200V AC/DC

CONTACT RESISTANCE = 25mΩ MAX

INSULTAION RESISTANCE = 100MΩ MIN

MECHANICAL:

DURABILITY = 500 OPERATIONS

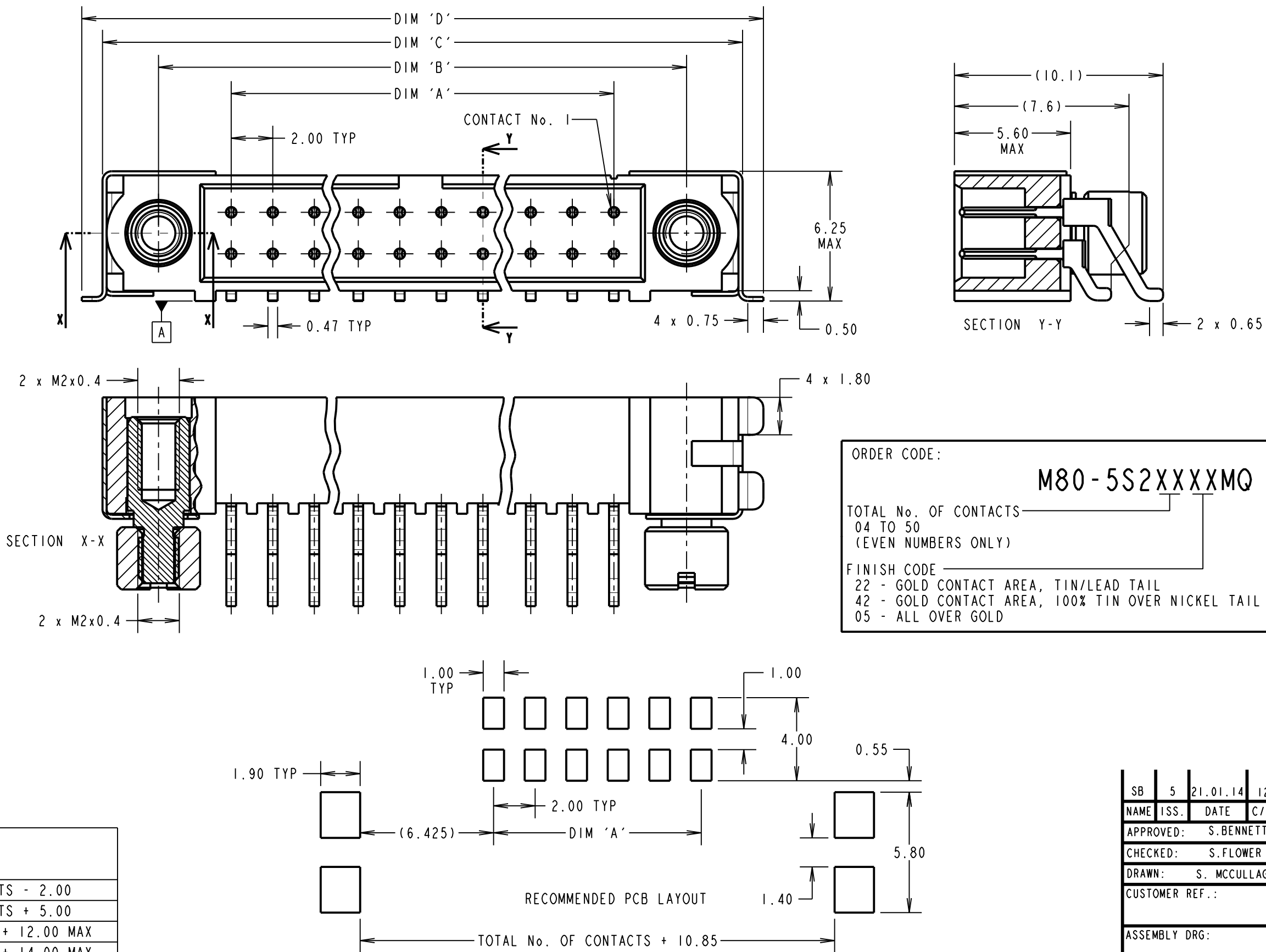
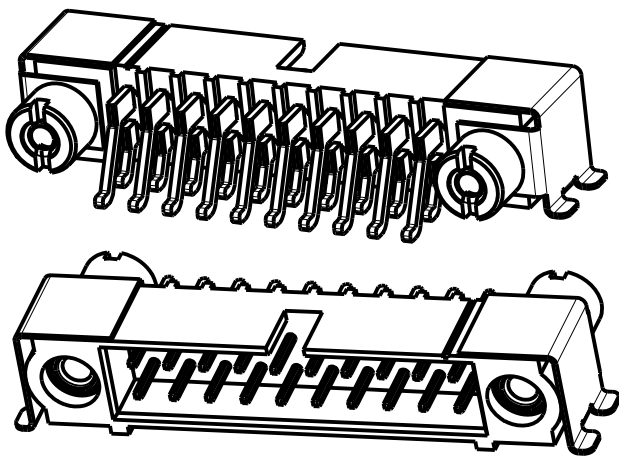
ENVIRONMENTAL:

TEMPERATURE RANGE = -55°C TO +125°C

PACKING:

TUBE

FOR COMPLETE SPECIFICATION, SEE COMPONENT
SPECIFICATION C005XX (LATEST ISSUE)



ORDER CODE:

M80-5S2XXXXMQ

TOTAL No. OF CONTACTS
04 TO 50
(EVEN NUMBERS ONLY)

FINISH CODE

22 - GOLD CONTACT AREA, TIN/LEAD TAIL


42 - GOLD CONTACT AREA, 100% TIN OVER NICKEL TAIL

05 - ALL OVER GOLD

DIMENSION	CALCULATION
DIM 'A'	TOTAL No. OF CONTACTS - 2.00
DIM 'B'	TOTAL No. OF CONTACTS + 5.00
DIM 'C'	TOTAL No. OF CONTACTS + 12.00 MAX
DIM 'D'	TOTAL No. OF CONTACTS + 14.00 MAX

EXAMPLE: CONNECTOR WITH 20 CONTACTS, GOLD ON CONTACT AREA AND 100% TIN OVER NICKEL ON TAIL
M80-5S22042MQ

DIM 'A' = 18.00mm, DIM 'B' = 25.00mm,
DIM 'C' = 32.00mm MAX, DIM 'D' = 34.00mm MAX



www.harwin.com
technical@harwin.com

THIS DRAWING AND ANY INFORMATION OR DESCRIPTIVE MATTER SET OUT HEREON ARE CONFIDENTIAL AND COPYRIGHT PROPERTY OF THE HARWIN GROUP AND MUST NOT BE DISCLOSED, LOANED, COPIED OR USED FOR MANUFACTURING, TENDERING OR FOR ANY OTHER PURPOSE WITHOUT THEIR WRITTEN PERMISSION.

TOLERANCES

X. = ±1mm

X.X = ±0.25mm

X.XX = ±0.10mm

X.XXX = ±0.01mm

ANGLES = ±5°

UNLESS STATED

MATERIAL:

SEE ABOVE

FINISH: SEE ABOVE

S/AREA: mm²

TITLE: JACKSCREW DATAMATE DIL
HORIZONTAL SMT MALE ASSY
WITH SMT STRAIN RELIEF STRAPS

DRAWING NUMBER:

M80-5S2XXXXMQ

SHT 2 OF 2