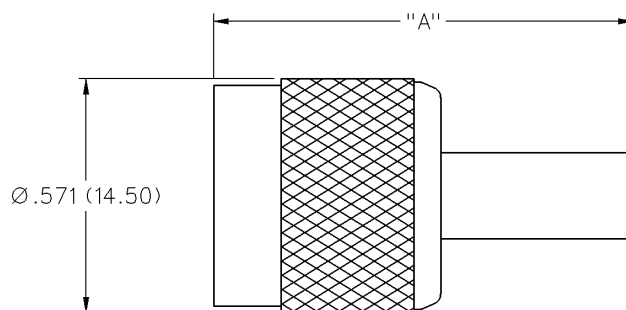
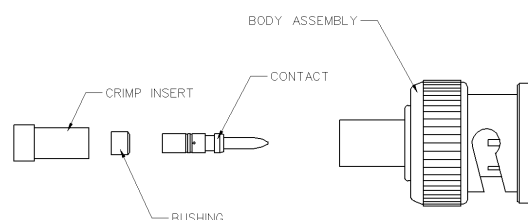
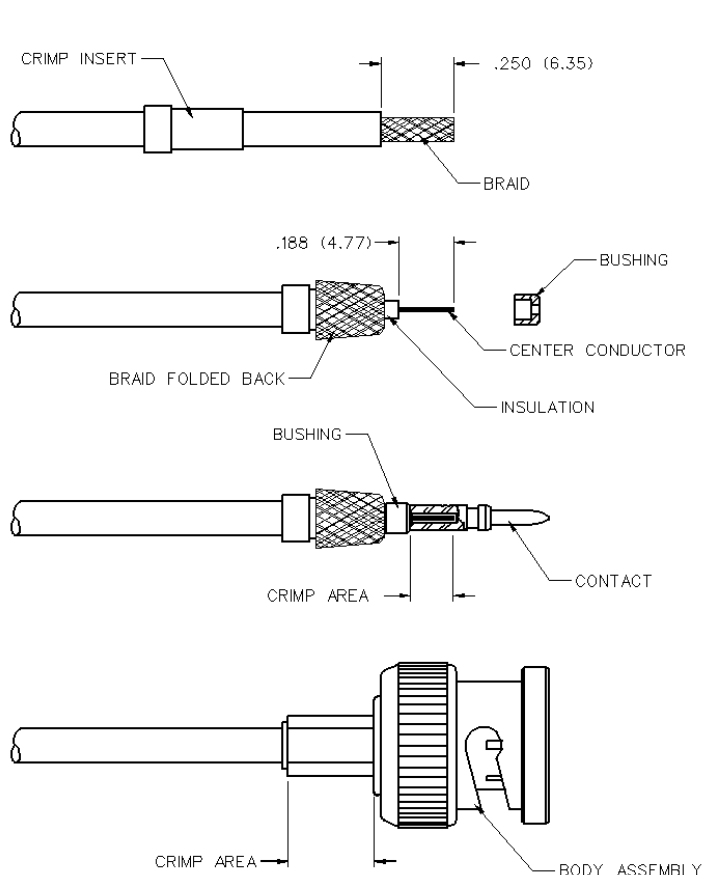


TNC Straight Crimp Type Plug - Solder or Crimp Contact - 4 Piece



PART NUMBER	CABLE TYPE	CONTACT I.D.	BODY I.D.	FERRULE I.D.	TERMINATION
CPM-TNC-19	RG-174, 188, 316	.0245 (0.62)	.167 (4.24)	.118 (3.00)	Crimp Insert



1. Identify connector parts. (4 piece parts)
2. Slide crimp insert over cable and strip cable jacket to dimension shown. Do not nick braid or center conductor during strip operations.
3. Flair braid and fold back around crimp insert as shown. Strip cable insulation to dimension shown. Do not nick center conductor.
4. Place bushing and contact on the cable. Hold the assembly in place and crimp contact to cable center conductor using the appropriate crimp hex.
5. Slide body assembly over contact and other connector parts until a gentle snap is felt, indicating the contact is in place. Crimp the body assembly in the location shown using the appropriate crimp hex.

Part Number	Cable	Body Sleeve Hex	Contact Crimp Hex	Recommended Crimp Tool
CPM-TNC-19	RG-174, 188, 316	0.184 (4.67)	.060 (1.52)	24-306P

TNC Connectors

Specifications



INCHES (MILLIMETERS)
CUSTOMER DRAWINGS AVAILABLE UPON REQUEST

The TNC connector is a threaded version of the BNC mating interface. All contacts are captivated for ruggedness. The TNC is a commercial quality connector that provides additional retention for shock and vibration applications. The TNC connector intermates with all standard 50 Ohm TNC connectors.

Specifications*

Electrical Characteristics

Impedance: 50 Ohm nominal (except where noted)
Frequency range: 0-11 GHz
Working voltage: 500 volts RMS at sea level
Dielectric withstanding voltage: 1500 volts RMS at sea level
Corona level: 375 volts minimum at 70,000 feet
Contact resistance: Outer - 0.2 milliohms maximum
Center - 2.1 milliohms maximum
Insulation resistance: 5000 megohms minimum

Environmental Characteristics

Recommended temperature range: -55°C to +85°C
Moisture Resistance: MIL-STD-202

Mechanical Characteristics

Durability: 500 cycles
Cable retention: 20 lbs., RG-58 C/U cable

Materials

Body and coupling nut: Zinc or brass
Contact: Beryllium copper, phosphor bronze or brass
Crimp Sleeve: Brass
Insulator: Teflon®, TPX or Delrin®
Hardware: Brass
Plating: Body - Nickel
Crimp sleeve - Nickel
Hardware - Nickel
Contact - Gold

* These values are typical and may not apply to all connectors.