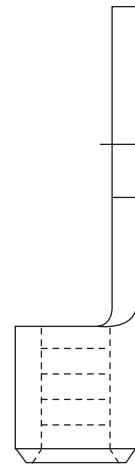
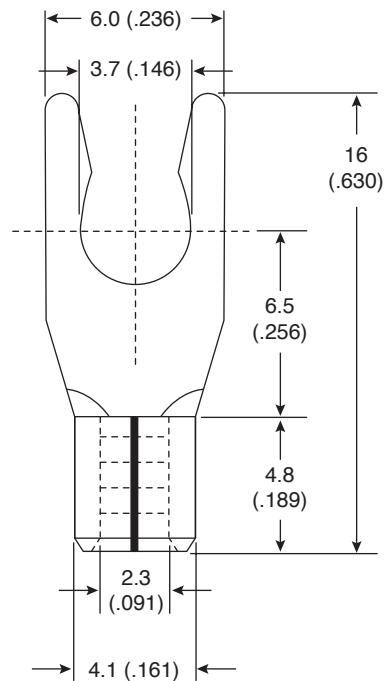


# Locking Spade Solderless Terminal

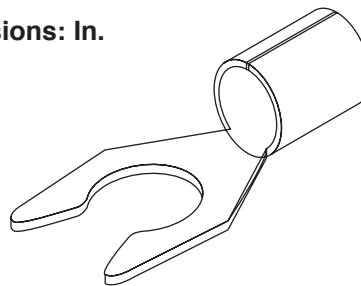
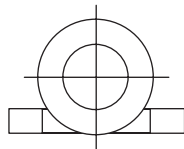
159-1644



Locking Spade Solderless Terminal



Dimensions: In.



## SPECIFICATIONS

Wire Range:	16-14 AWG
Maximum Current:	27 Ampere

Date Last Revised: 7-14-05

Available from Mouser Electronics  
1-800-346-6873  
[www.mouser.com](http://www.mouser.com)

KC-300712

159-1644

# Mouser Electronics

Authorized Distributor

Click to View Pricing, Inventory, Delivery & Lifecycle Information:

[Kobiconn:](#)

[159-1644](#)