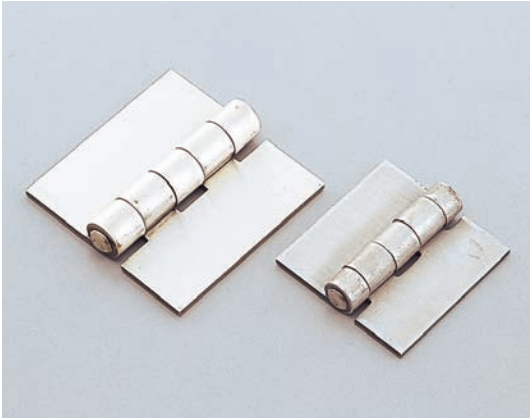


MECHANICAL PARTS

TH-94 TH-94SUS Indent Hinge for Heavy Use

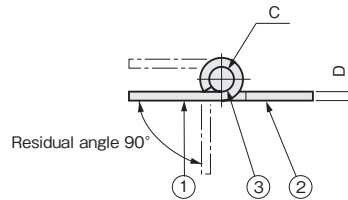
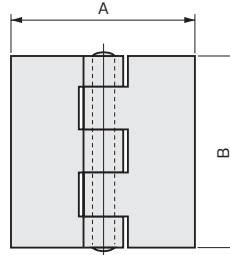


Characteristic

For a welding or heavy weight door, suited for rather large devices such as distribution boards, distribution panels, and control boards. Two types are available, steel and stainless steel.

Application

Distribution boards /
Distribution panels /
Control boards



Specification

Model No.	A	B	C	D	Door Weight (kg)	Net Weight (g)	Code No.
TH-94-1	(50)	51	φ6	t2.5	—	78.1	2187
TH-94SUS-1					22	77.2	2194
TH-94-2	(63)	64	φ7	t3	—	140.0	2188
TH-94SUS-2					28	142.9	2195
TH-94-3	(74)	76			30	186.8	2189
TH-94SUS-3					35	184.0	2196
TH-94-4	(87)	89	φ8	t4	—	269.2	2190
TH-94SUS-4					30	269.2	2190
TH-94-5	(100)	101.6			50	425.6	2191
TH-94SUS-5					60	421.2	2198
TH-94-6	(118)	127	φ11	t4	—	688.6	2192
TH-94SUS-6					55	688.6	2192
TH-94-7	(142)	152			φ12	—	966.4
TH-94SUS-7					85	961.5	2200

Parts List

No.	Part Name	TH-94		TH-94SUS		Quantity
		Material	Finish	Material	Finish	
1	Hinge Piece (A)	SPHC	—	SUS 304	Hairline	1
2	Hinge Piece (B)					1
3	Shaft	SWRM	—	—	—	1

TH-124 Indent Hinge for Heavy Use

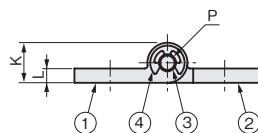
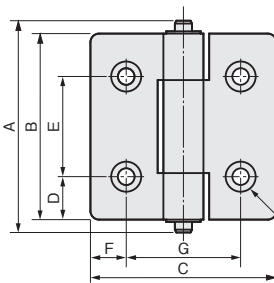


Characteristic

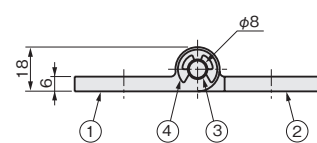
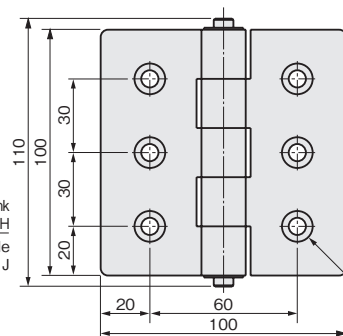
Made of stainless steel for heavy object, having excellent corrosion-resistance.

Application

Distribution boards / Distribution panels /
Various types of testing devices



TH-124-1~3



TH-124-4

Model No.	Door Weight (kg)	Net Weight (g)	Code No.
TH-124-1	30	119	2624
TH-124-2	55	194	2625
TH-124-3	80	304	2626
TH-124-4	90	523	2627

Parts List

No.	Part Name	Material	Finish	Quantity
1	Hinge Piece (A)	SCS13	Buffing	1
2	Hinge Piece (B)			1
3	Shaft	SUS304	—	1
4	E-Shaped Snap Ring			2

Size List

Product No.	A	B	C	D	E	F	G	H	J	K	L	P
1	60	50	50	15	20	7.5	35	φ8.6	φ4.8	14	5	φ6
2	74	65	65	—	35	12.5	40	φ10.5	φ5.8	—	—	—
3	85	75	75	17.5	40	—	50	φ12.5	φ7	16	6	φ8