



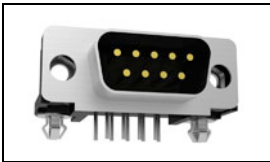
Have a Question?
Chat with a Product
Information Specialist

What can we help you find?

- Products
- Industries
- Resources
- About TE
- My Account
- Innovation
- Support Center

5747840-4 Product Details

Share Print Email



5747840-4

TE Internal Number: 5747840-4
 Active

View 3D PDF

Standard Board Mount Connectors

Always EU RoHS/ELV Compliant (Statement of Compliance)

Product Highlights:

- 9 Positions
- Connector Style = Plug
- PCB Mounting Orientation = Right Angle
- Product Series = HD 20
- With Mating Connector Lock

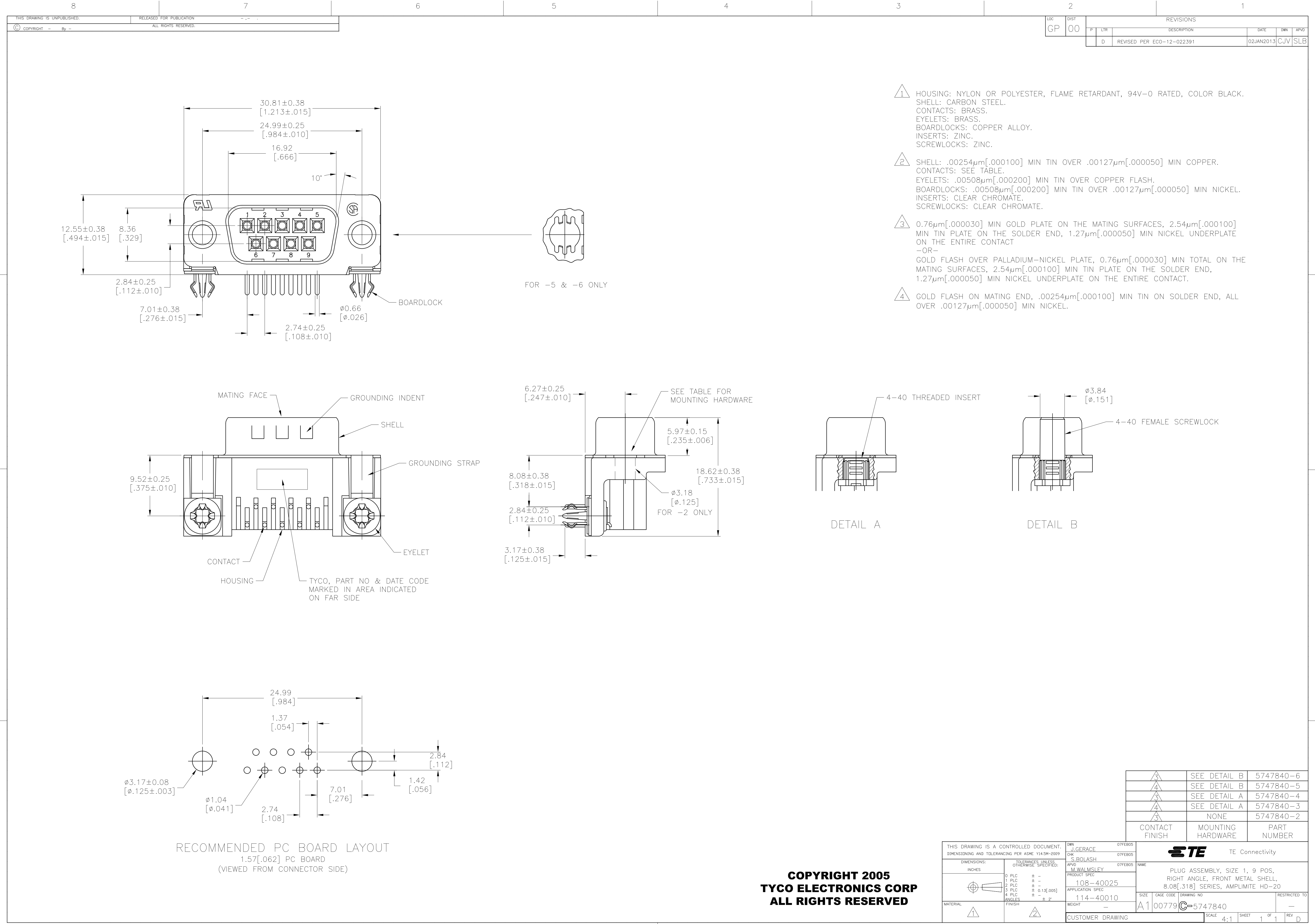
[View all Features](#)

Quick Links

- ▶ [Pricing & Availability](#)
- ▶ [Search for Tooling](#)
- ▶ [View Mating Products \(18\)](#)
- ▶ [Product Feature Selector](#)
- ▶ [Contact Us About This Product](#)

Documentation & Additional Information	
<p>Product Drawings:</p> <ul style="list-style-type: none">• PLUG ASSEMBLY, SIZE 1, 9 POS, RIGHT ANGLE, FRONT MET... (PDF, English) <p>Catalog Pages/Data Sheets:</p> <ul style="list-style-type: none">• AMPLIMITE Subminiature D Connectors - Right-Angle Po... (PDF, English) <p>Product Specifications:</p> <ul style="list-style-type: none">• None Available <p>Application Specifications:</p> <ul style="list-style-type: none">• None Available <p>Instruction Sheets:</p> <ul style="list-style-type: none">• None Available <p>CAD Files: (CAD Format & Compression Information)</p> <ul style="list-style-type: none">• 2D Drawing (DXF, Version D)• 3D Model (IGES, Version D)• 3D Model (STEP, Version D) <p>List all Documents</p>	<p>Additional Information:</p> <ul style="list-style-type: none">• Product Line Information <p>Related Products:</p> <ul style="list-style-type: none">• Tooling• Mating Products (18)




Product Features (Please use the Product Drawing for all design activity)	
<p>Product Type Features:</p> <ul style="list-style-type: none">• PCB Mounting Orientation = Right Angle• Product Series = HD 20• Mating Connector Lock = With• Mating Connector Lock Type = Threaded Insert, 4-40 UNC• PCB Mount Retention = With• PCB Mount Retention Type = Boardlock(s)• Shell Type = Front Metal Shell• Shell Size = 1• Footprint (mm [in]) = 8.08 [.318]• Grounding Indents = With• Grounding Straps = With• PCB Mount Style = Through Hole• Color Code = None• Sealed = No• Profile = Standard• Post Size (mm [in]) = 0.66 [.026]• Mounting Hole Diameter (mm [in]) = 3.18 [.125]• Shell Material = Steel• Threaded Insert Material = Zinc• Eyelet Material = Brass <p>Mechanical Attachment:</p> <ul style="list-style-type: none">• Panel Mount Retention = Without• Boardlock Material = Copper Alloy• Boardlock Plating = Tin over Nickel <p>Termination Features:</p> <ul style="list-style-type: none">• Grounding Clips = Without• Termination Post Length (mm [in]) = 3.18 [0.125]• Solder Tail Contact Plating = Tin over Nickel	<p>Dimensions:</p> <ul style="list-style-type: none">• PCB Thickness, Recommended (in [mm]) = 0.062 [1.57] <p>Body Features:</p> <ul style="list-style-type: none">• Shell Plating = Tin• Threaded Insert Plating = Clear Chromate• Eyelet Plating = Tin over Copper Flash <p>Contact Features:</p> <ul style="list-style-type: none">• Contact Plating, Mating Area, Material = Gold (30)• Contact Shape = Round• Contact Base Material = Brass <p>Housing Features:</p> <ul style="list-style-type: none">• Connector Style = Plug• UL Flammability Rating = UL 94V-0• Housing Material = Thermoplastic - GF <p>Configuration Features:</p> <ul style="list-style-type: none">• Number of Positions = 9 <p>Industry Standards:</p> <ul style="list-style-type: none">• RoHS/ELV Compliance = RoHS compliant, ELV compliant• Lead Free Solder Processes = Wave solder capable to 260°C, Wave solder capable to 240°C, Wave solder capable to 265°C• RoHS/ELV Compliance History = Always was RoHS compliant <p>Other:</p> <ul style="list-style-type: none">• Brand = AMP• Comment = Plugs are preloaded with size 20 DF posted pin contacts



- 1 HOUSING: NYLON OR POLYESTER, FLAME RETARDANT, 94V-0 RATED, COLOR BLACK.
SHELL: CARBON STEEL.
CONTACTS: BRASS.
EYELETS: BRASS.
BOARDLOCKS: COPPER ALLOY.
INSERTS: ZINC.
SCREWLOCKS: ZINC.
- 2 SHELL: .00254µm[.000100] MIN TIN OVER .00127µm[.000050] MIN COPPER.
CONTACTS: SEE TABLE.
EYELETS: .00508µm[.000200] MIN TIN OVER COPPER FLASH.
BOARDLOCKS: .00508µm[.000200] MIN TIN OVER .00127µm[.000050] MIN NICKEL.
INSERTS: CLEAR CHROMATE.
SCREWLOCKS: CLEAR CHROMATE.
- 3 0.76µm[.000030] MIN GOLD PLATE ON THE MATING SURFACES, 2.54µm[.000100] MIN TIN PLATE ON THE SOLDER END, 1.27µm[.000050] MIN NICKEL UNDERPLATE ON THE ENTIRE CONTACT
-OR-
GOLD FLASH OVER PALLADIUM-NICKEL PLATE, 0.76µm[.000030] MIN TOTAL ON THE MATING SURFACES, 2.54µm[.000100] MIN TIN PLATE ON THE SOLDER END, 1.27µm[.000050] MIN NICKEL UNDERPLATE ON THE ENTIRE CONTACT.
- 4 GOLD FLASH ON MATING END, .00254µm[.000100] MIN TIN ON SOLDER END, ALL OVER .00127µm[.000050] MIN NICKEL.

3	SEE DETAIL B	5747840-6
4	SEE DETAIL B	5747840-5
3	SEE DETAIL A	5747840-4
4	SEE DETAIL A	5747840-3
3	NONE	5747840-2
CONTACT FINISH	MOUNTING HARDWARE	PART NUMBER

**COPYRIGHT 2005
TYCO ELECTRONICS CORP
ALL RIGHTS RESERVED**

THIS DRAWING IS A CONTROLLED DOCUMENT. DIMENSIONING AND TOLERANCING PER ASME Y14.5M-2009		DWG J. GERACE 07FEB05	 TE Connectivity	
DIMENSIONS: INCHES		CHK S. BOLASH 07FEB05	NAME	
TOLERANCES UNLESS OTHERWISE SPECIFIED:		APVD M. WALMSLEY 07FEB05	PRODUCT SPEC	
0 PLC ± -		108-40025		RESTRICTED TO
1 PLC ± -		APPLICATION SPEC		
2 PLC ± -		114-40010		REV
3 PLC ± 0.13[.005]		SIZE		
4 PLC ± -		CAGE CODE		D
ANGLES ± 2°		DRAWING NO		
FINISH		WEIGHT		SCALE
MATERIAL		CUSTOMER DRAWING		
		A1 00779 C=5747840		SHEET
		4:1		
				REV