

FO-50378  
DRAWN  
R. L. Z.  
31 MAY '57  
CHECK  
GCH  
13 JUNE '57  
CHECK  
BLS  
4 JUNE '57  
CHECK  
REVISIONS  
ISSUE  
DRAWING NUMBER  
M  
8MAI  
RELEASE NO. SR 6517  
REPLACES  
8MAI  
(M) SKETCH 16022  
ISSUE 1

# MICRO SWITCH

A DIVISION OF MILWAUKEE-HONEYWELL REGULATOR COMPANY  
MILWAUKEE, WISCONSIN

FED. MFR. CODE 91929

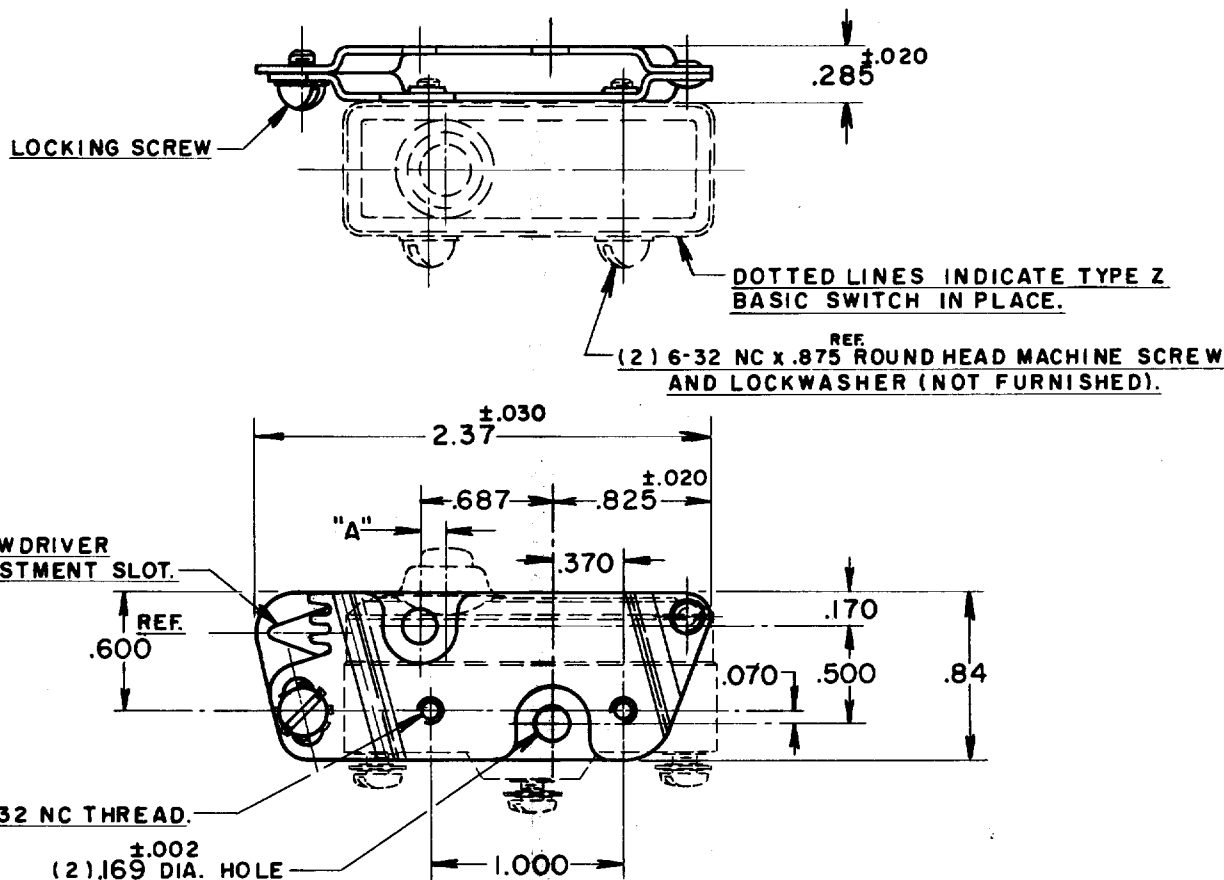
## BRACKET - MOUNTING

CATALOG LISTING

8MAI

### PLUNGER LOCATION

BASIC SWITCH TYPE	DIM. "A"
STANDARD	.057
TYPE Z	.140
TYPE A	.307



### NOTE-

- 1-BRACKET IS SHOWN AT APPROX. MIDPOINT OF TOTAL .080 ADJUSTMENT OF OPERATING POSITION.
- 2-TO ADJUST OPERATING POSITION
  - (a) LOOSEN LOCKING SCREW SLIGHTLY.
  - (b) INSERT SCREWDRIVER WITH .188 TO .250 WIDE TIP IN ADJUSTMENT SLOT AND ROTATE IN DESIRED DIRECTION.
  - (c) TIGHTEN LOCKING SCREW.

THIS DRAWING COVERS A PROPRIETARY ITEM AND IS THE PROPERTY OF MICRO SWITCH, A DIVISION OF HONEYWELL. THIS DRAWING IS NOT TO BE COPIED OR USED WITHOUT THE APPROVAL OF MICRO SWITCH.

### CHARACTERISTICS

### ELECTRICAL DATA

### SCALE FULL

CONTACT ARRANGEMENT

BREAK DISTANCE

DO NOT SCALE PRINT

UNLESS OTHERWISE SPECIFIED  
DIMENSIONS ARE IN INCHES  
TOLERANCES ARE:

ONE PLACE	(.0)	±.030
TWO PLACE	(.00)	±.015
THREE PLACE	(.000)	±.005
ANGLES		±

WEIGHT

# Mouser Electronics

Authorized Distributor

Click to View Pricing, Inventory, Delivery & Lifecycle Information:

[Honeywell:](#)

[8MA1](#)