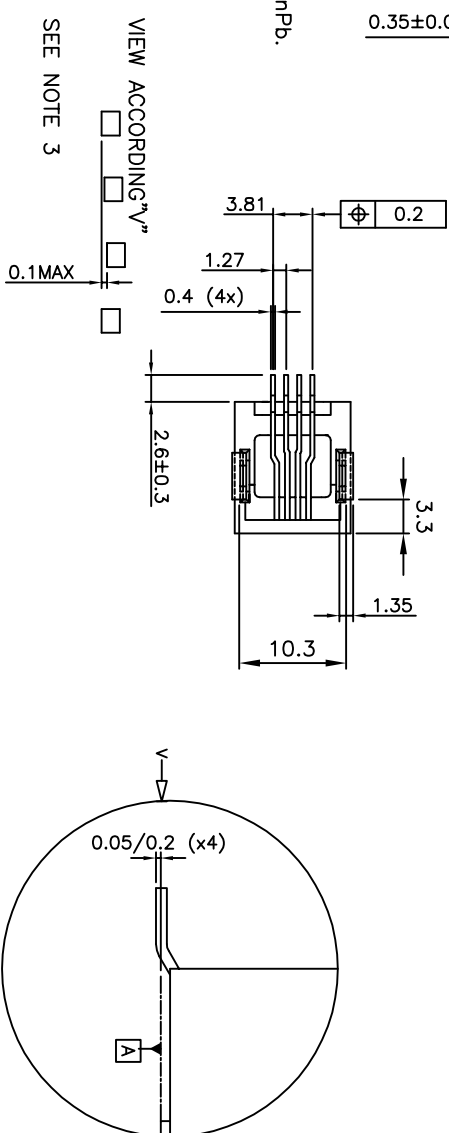
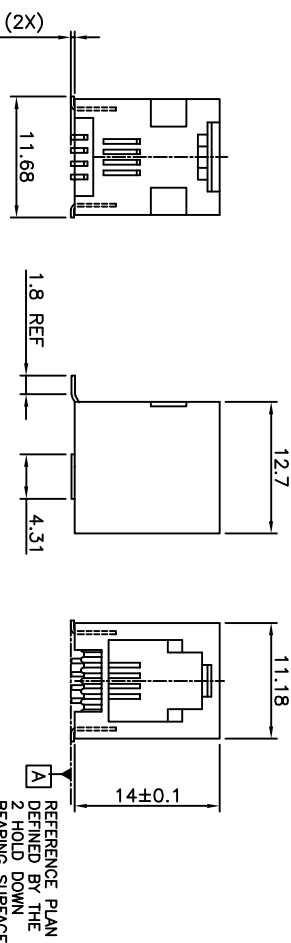


PRODUCT NUMBER
73306-XXXLF

PLATING OPTION	PACKAGE OPTION
1 = GXT 0.76 μ m	1 = TAPE ON REEL
3 = GOLD 0.76 μ m	2 = TUBE
5 = GOLD 1.27 μ m	3 = TAPE ON REEL IN PLASTIC BAG

TERMINAL LOADING
1 = FULLY LOADED

WHEN NEEDED, SUFFIX LETTER "LF"
INDICATES THE PRODUCT IS ROHS
COMPATIBLE, SEE NOTE 4.



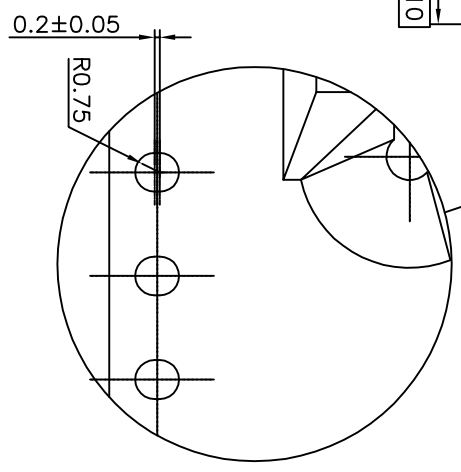
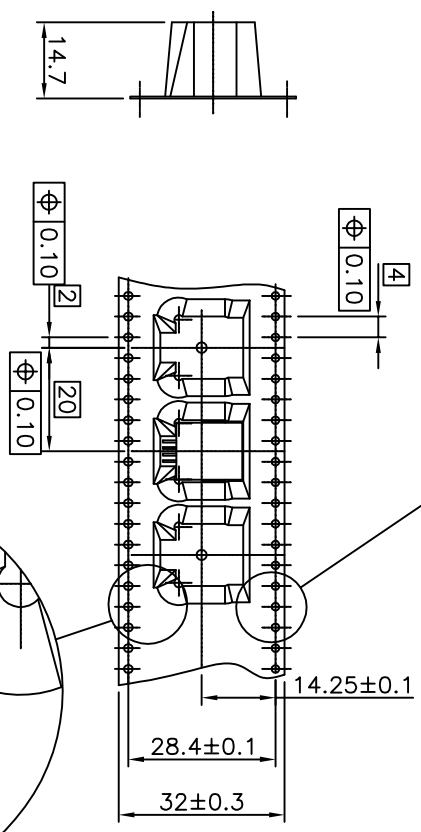
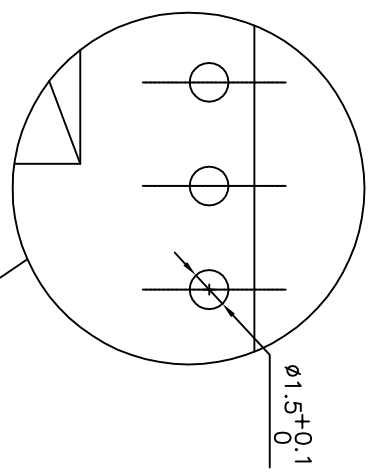
CUSTOMER COPY FOR REFERENCE ONLY

mat'l. code	ISO 1302	tolerance	ISO 406	ISO 1101	projection	product family	MOD JACK
tr	ecm no	dr	date	ISO 1302	tolerance unless otherwise specified	ISO 406	ISO 1101
H	F05-0247	DLE	05.09.12	angle	linear	±0.13	
J	F06-0240	DLE	06.07.18	linear			
K	F09-0076	LSA	09.07.23	±2°			
L	B-15798	JFA	13.09.09	dr	D EGRAND	04.10.18	
F	F03020	DLE	03.01.27	chr	D EGRAND	04.10.18	
G	F04-0363	DLE	04.10.18	qppd	P NZ	04.10.18	
sheet	revision	L	F	B			
index	sheet	1	2	3			

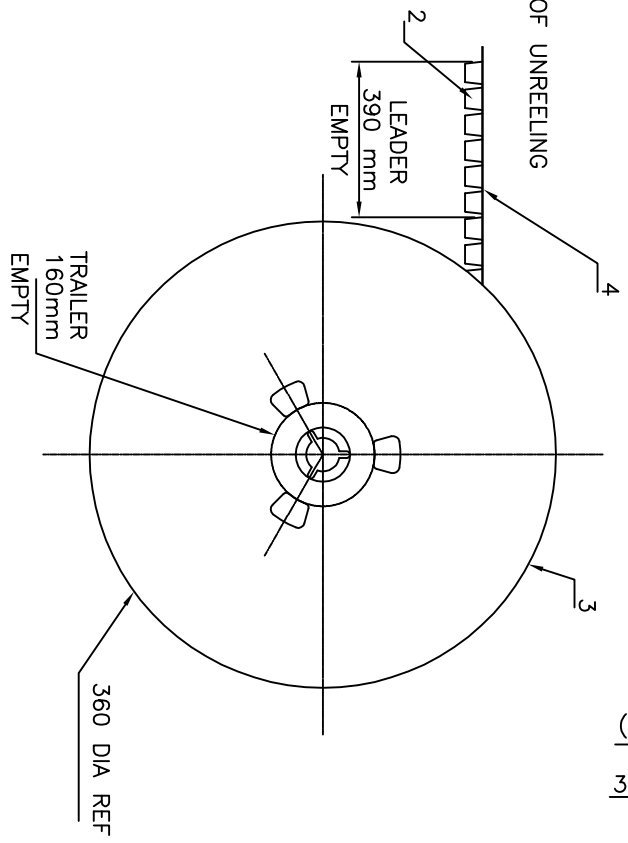
- NOTES:
- 1 - MATERIAL: HOUSING: HIGH TEMP. NYLON, COLOUR BLACK.
TERMINAL: PHOSPHOR BRONZE.
 - 2 - PLATING: CONTACT AREA: SEE TABLE.
SOLDER TAIL : 90/10 SnPb 2 μ m MIN.
WHEN SUFFIX "LF" IS REQUIRED, 2 μ m MIN MATTE TIN OVER 1.27 MIN Ni IS SUPPLIED INSTEAD OF SnPb.
NO RAW EDGES EXCEPT SOLDER TAIL TIPS
 - 3 - SOLDER TAILS COPLANARITY : 0.1 mm
 - 4 - ROHS COMPATIBLE. PRODUCT SPECIFICATIONS
 - a - PLATING:
 - "LF" MEANS THE PRODUCT IS LEAD-FREE, 2 μ m MINIMUM MATTE TIN OVER 1.27 μ m MINIMUM NICKEL UNDERPLATE.
 - b - MANUFACTURING PROCESS COMPATIBILITY
 - THE HOUSING WILL WITHSTAND EXPOSURE TO 245°C PEAK TEMPERATURE FOR 30 SECONDS MAX IN A CONVECTION, INFRA-RED OR VAPOR PHASE OR REFLOW OVEN.
 - c - LABELING:
 - MEETS PACKAGING SPECS AS PER GS-14-920
 - d - LEGAL STATEMENT: SEE GS-22-008
 - 5 - PACKAGING FOR OPTION 3: EACH REEL IS WRAPPED INTO A PLASTIC BAG TO PROTECT FROM MOISTURE DURING STACKING TIME.

PRODUCT NUMBER
SEE SHEET 1

LTR	PART NAME	QTY
1	PRODUCT	280
2	TAPE	1
3	REEL	1
4	COVER TAPE	1



DIRECTION OF UNREELING



1 - IN ACCORDANCE WITH EIA-481 AND IEC 296-3

CUSTOMER COPY FOR REFERENCE ONLY

mat'l. code	surface	tolerance	projection	product family
ISO 1302	ISO 406	ISO 1101	MOD-JACK	
tr ecn no	dr date	tolerances unless otherwise specified		
E F90120	DLE 99.02.01			
F F06.0240	DLE 06.07.18	angles linear	scale 1:1	
dr	D LEGRAND	06.07.18		
engr	P NIZZI	06.07.18		
chr	D LEGRAND	06.07.18		
appd	P NIZZI	06.07.18		
sheet	revision			
index	sheet			

title
SMT RA JACK
4 POS. NARROW OUTSIDE

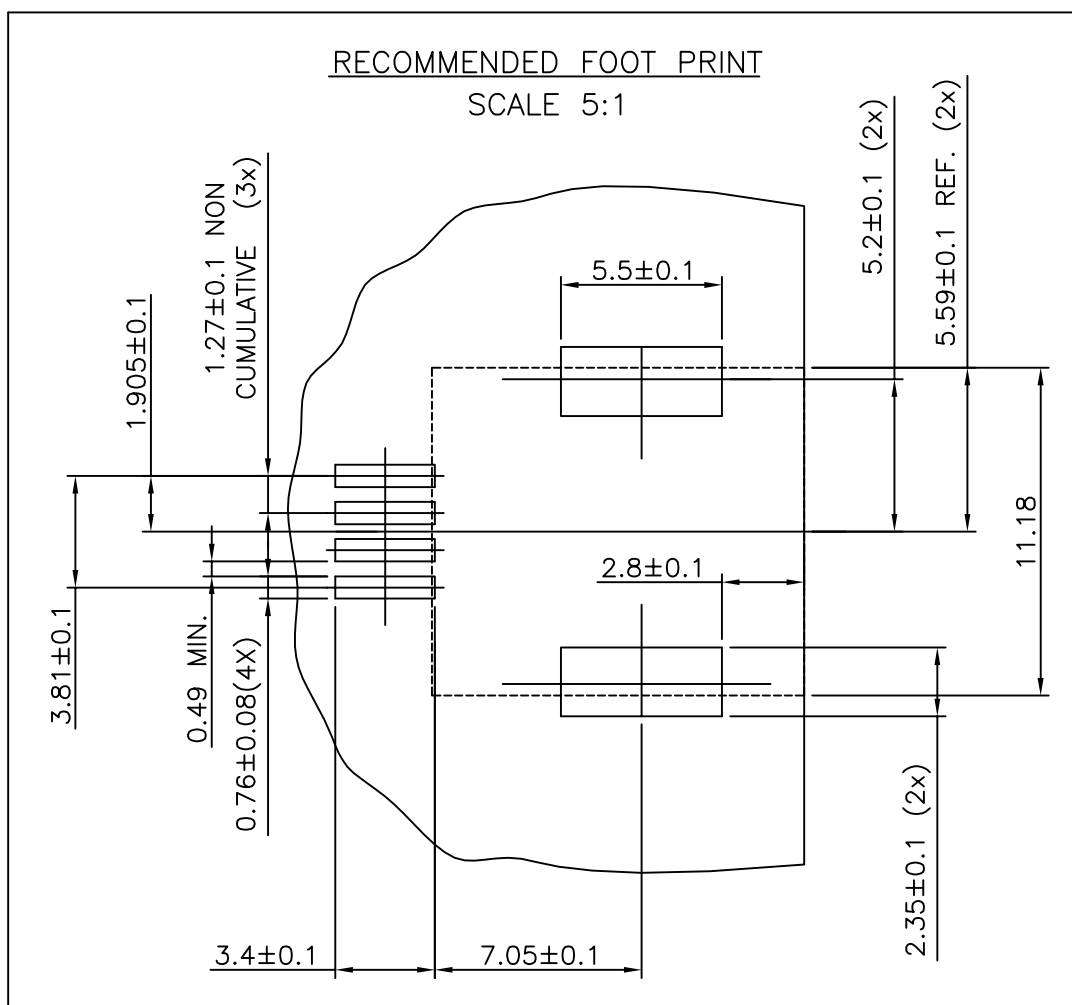


dwg no
73306
sheet 2 of 3
size
A3
CUSTOMER Drawing



FCIconnect.com

Copyright FCI



CUSTOMER COPY FOR REFERENCE ONLY

mat'l. code				surface ISO 1302	✓	tolerance ISO 406 ISO 1101	projection 	product family MOD JACK			
ltr	ecn no	dr	date	tolerances unless otherwise specified			mm 	title			
A	F04.0363	DLE	04.10.18	angles		±0.13		SMT RA JACK			
B	F06-0240	DLE	06.07.18	linear			scale 2:1	4 POS NARROW OUTSIDE			
				dr	D LEGRAND	04.10.18		dwg no		sheet 3 of -	size
				engr	P NIZZI	04.10.18		73306			A4
				chr	D LEGRAND	04.10.18					
				appd	P NZ	04.10.18		type		CUSTOMER Drawing	
sheet index	revision sheet										