

ALUMINUM ELECTROLYTIC CAPACITORS

nichicon



ES

Bi-Polarized, For Audio Equipment

series



For Audio Use



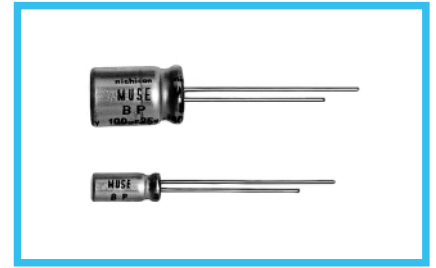
Bi-polarized



Anti-Solvent Feature

- Bi-polarized "nichicon MUSE" acoustic series.
- Suited for audio signal circuits.
- Compliant to the RoHS directive (2011/65/EU).

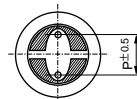
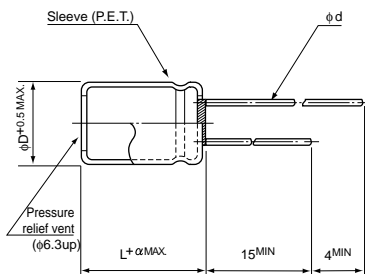
ES ← Bi-polarized FW



Specifications

Item	Performance Characteristics						
Category Temperature Range	-40 to +85°C						
Rated Voltage Range	6.3 to 50V						
Rated Capacitance Range	0.47 to 1000μF						
Capacitance Tolerance	±20% at 120Hz, 20°C						
Leakage Current	After 1 minute's application of rated voltage, leakage current is not more than 0.03CV or 3 (μA), whichever is greater.						
Tangent of loss angle (tan δ)	Measurement frequency : 120Hz at 20°C						
	Rated voltage (V)	6.3	10	16	25	35	50
	tan δ (MAX.)	0.24	0.20	0.16	0.16	0.14	0.12
Stability at Low Temperature	Measurement frequency : 120Hz						
	Rated voltage (V)		6.3	10	16	25	35
	Impedance ratio Z-25°C / Z+20°C		4	3	2	2	2
Endurance	ZT / Z20 (MAX.)		8	6	4	4	4
	Z-40°C / Z+20°C		8	6	4	4	4
Shelf Life	The specifications listed at right shall be met when the capacitors are restored to 20°C after the rated voltage is applied for 1000 hours at 85°C with the polarity inverted every 250 hours.						
Marking	Printed with black color letter on clear green sleeve.						

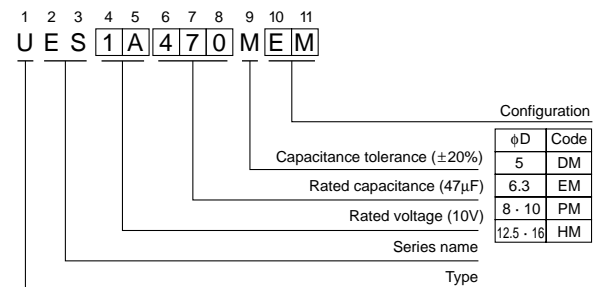
Radial Lead Type



	5	6.3	8	10	12.5	16
φD	2.0	2.5	3.5	5.0	5.0	7.5
P	0.6	0.6	0.6	0.6	0.8	0.8
φd	0.6	0.6	0.6	0.6	0.8	0.8

α	(φD < 10) 1.0
	(φD ≥ 10) 1.5

Type numbering system (Example : 10V 47μF)



- Please refer to page 20 about the end seal configuration.

Dimensions

φD × L (mm)

V	6.3	10	16	25	35	50
Cap.(μF)	Code	0J	1A	1C	1E	1V
0.47	R47					5 × 11
1	010					5 × 11
2.2	2R2					5 × 11
3.3	3R3					5 × 11
4.7	4R7					5 × 11
10	100			5 × 11	5 × 11	6.3 × 11
22	220		5 × 11	6.3 × 11	6.3 × 11	8 × 11.5
33	330	5 × 11	6.3 × 11	6.3 × 11	8 × 11.5	10 × 12.5
47	470	6.3 × 11	6.3 × 11	8 × 11.5	10 × 12.5	10 × 20
100	101	8 × 11.5	10 × 12.5	10 × 12.5	10 × 16	12.5 × 25
220	221	10 × 12.5	10 × 16	10 × 20	12.5 × 25	16 × 25
330	331	10 × 16	10 × 20	12.5 × 20	12.5 × 25	16 × 31.5
470	471	10 × 20	12.5 × 20	12.5 × 25	16 × 25	
1000	102	12.5 × 25	16 × 25	16 × 25	16 × 31.5	

Please refer to page 20, 21, 22 about the formed or taped product spec.
Please refer to page 4 for the minimum order quantity.

CAT.8100C