

SPECIFICATIONS:

ELECTRICAL:
INSULATOR RESISTANCE: 5,000 MegOHMS Min.
DIELECTRIC WITHSTANDING: 1,000VAC r.m.s.
OPERATING TEMPERATURE: -55° C ~ +125° C
CONTACT RESISTANCE: 30 MilliOHMS Max.
POWER PINS: 40 AMPS
SIGNAL PINS: 5 AMPS

MECHANICAL:
CONTACT INSERTION FORCE: 4.5 Kg Max.
CONTACT SEPARATOR FORCE: 0.3Kg Min.

MATERIALS:
CONTACTS: BRASS
INSULATOR: PBT UL94V-0 RATED,
230°C PROCESS TEMP.
SHELL: STEEL
BOARD LOCK: BRASS, NICKEL PLATED
CINCHNUT: BRASS, NICKEL PLATED
BRACKET: STEEL, NICKEL PLATED


FINISH:
SHELL: NICKEL
CONTACTS: FULL GOLD FLASH

684M17W2103L461

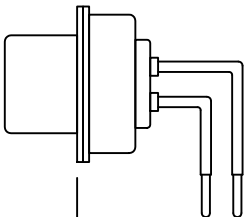
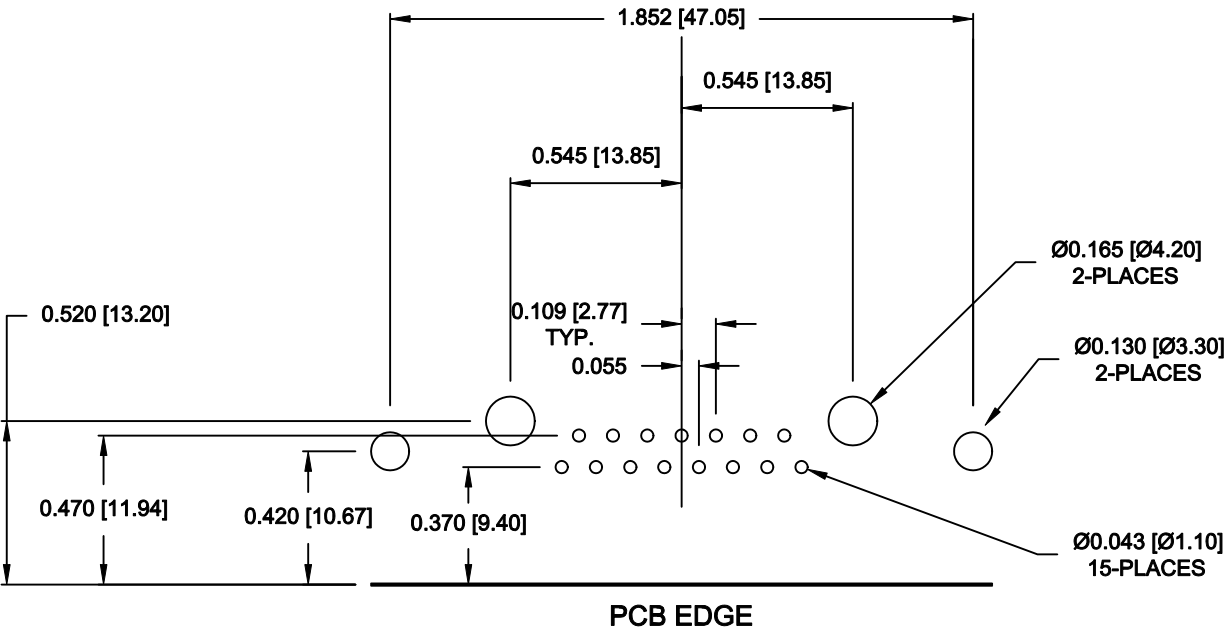
46 = 4-40 INSERTS / BOARD LOCKS

M = MACHINED CONTACTS

RoHS COMPLIANT

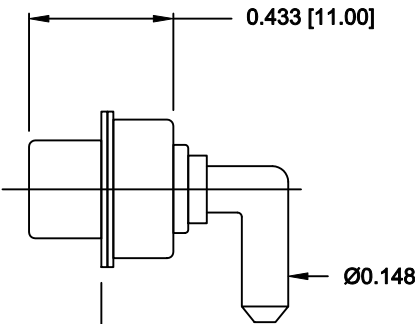
	THESE DRAWINGS AND SPECIFICATIONS ARE THE PROPERTY OF NorComp AND SHALL NOT BE REPRODUCED, COPIED OR USED AS THE BASIS FOR THE MANUFACTURE OR SALE OF APPARATUS WITHOUT WRITTEN PERMISSION.	DRAWN: M. SIGMON		DATE: 08-21-12	
		CHECKED:		DATE:	
		SCALE: 1.5 = 1		SHEET 1 OF 2	
NorComp		DWG NO. 684M17W2103L461			

NOTE:
POWER CONTACTS COME
PRE-LOADED INTO INSULATORS



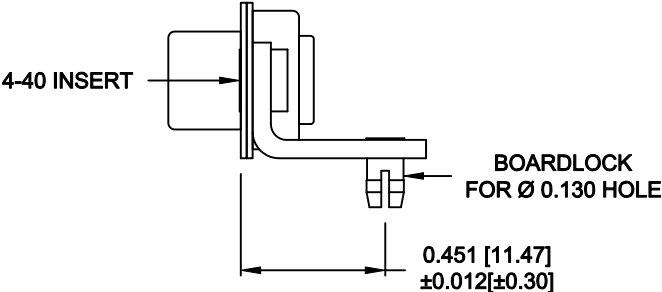
0.401 [10.20]
±0.012[±0.30]

SIGNAL CONTACTS




0.551 [14.00]
±0.012[±0.30]

40 AMP POWER CONTACT



MOUNTING HARDWARE

RoHS COMPLIANT

 NorComp	THESE DRAWINGS AND SPECIFICATIONS ARE THE PROPERTY OF NorComp AND SHALL NOT BE REPRODUCED, COPIED OR USED AS THE BASIS FOR THE MANUFACTURE OR SALE OF APPARATUS WITHOUT WRITTEN PERMISSION.	DRAWN: M. SIGMON		DATE: 08-21-12	
		CHECKED:		DATE:	
		SCALE: 1.5 = 1	SHEET 2 OF 2		REV 3
		DWG NO. 684M17W2103L461			

Mouser Electronics

Authorized Distributor

Click to View Pricing, Inventory, Delivery & Lifecycle Information:

[NorComp:](#)

[684M17W2103L461](#)