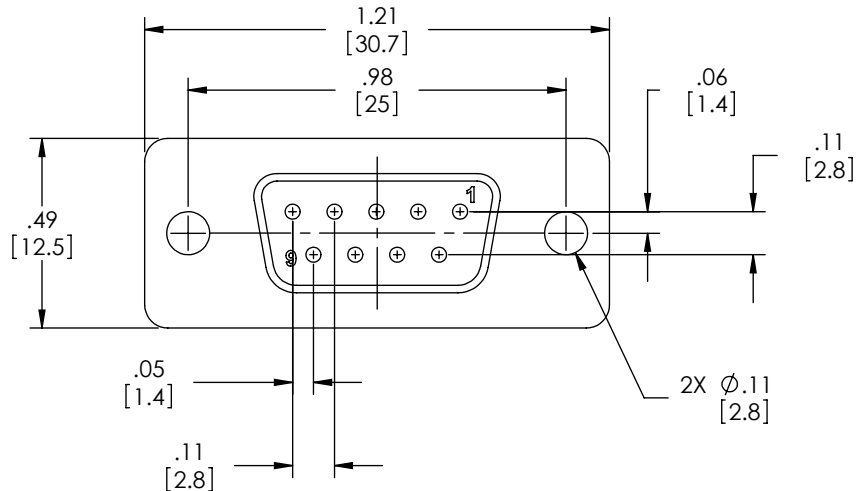
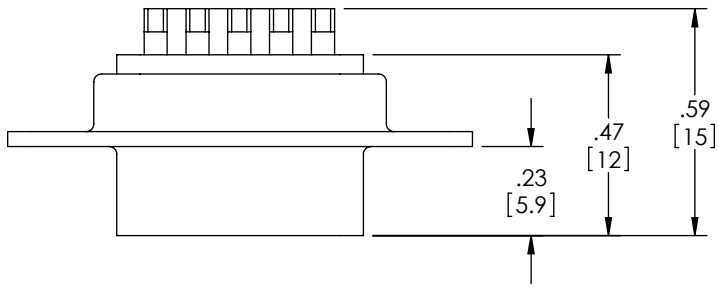


THE INFORMATION CONTAINED IN THIS DRAWING IS THE SOLE PROPERTY OF L-COM, INC. ANY REPRODUCTION IN PART OR WHOLE WITHOUT THE WRITTEN PERMISSION OF L-COM, INC. IS PROHIBITED.

REVISIONS			
REV	DESCRIPTION	DATE	APPROVED
E	ECN 4944: ADDED FRONT & BACK SHELL FINISH, ADDED PKG NOTE, DEL CURRENT RATING	8/3/10	D. CASTRO
-	-	-	-
-	-	-	-
-	-	-	-



NOTES:

MATERIAL:
 CONNECTOR SHELL: STEEL
 CONNECTOR INSULATOR: THERMOPLASTIC, UL94V-0 RATED
 CONTACTS: COPPER ALLOY

FINISH:
 FRONT SHELL: NICKEL PLATED
 BACK SHELL: TIN PLATED
 CONTACTS: GOLD FLASH IN CONTACT AREA OVER NICKEL PLATE
 SOLDER CUPS: TIN PLATED

ELECTRICAL:
 DIELECTRIC WITHSTANDING VOLTAGE: 1000 VAC rms
 INSULATION RESISTANCE: 5000MΩ @ 500VDC

MISCELLANEOUS:
 OPERATING TEMPERATURE: -55°C TO +105°C
 CONNECTOR SHALL BE PACKAGED IN ACCORDANCE WITH L-COM SPEC PS-0031.

CATALOG #	PACKAGING
SD9S	1/BAG
SD9S-TRAY	50/TRAY

UNLESS OTHERWISE SPECIFIED, DIMENSIONS ARE IN INCHES [mm] OVERALL CABLE LENGTH TOLERANCE: ≤12 [305] = +1 [25] / -0 >12 [305] ≤60 [1524] = +2 [51] / -0 >60 [1524] ≤120 [3048] = +4 [102] / -0 >120 [3048] ≤300 [7620] = +6 [152] / -0 >300 [7620] = +3% / -0%	APPROVALS	DATE		45 BEECHWOOD DRIVE NORTH ANDOVER, MA 01845
	DRAWN BY B.MAZEJKA	11/10/2003		CHECKED BY C.McCORMICK
ALL OTHER DIMENSIONAL TOLERANCES: .X = ±.2 .XX = ±.02 .XXX = ±.005	APPROVED BY D.PARHAM	12/08/2003	CATEGORY	DSUB
PROJECTION 	CONFIGURATION DETAILS OF UNDIMENSIONED FEATURES MAY VARY	COLOR VARIATIONS MAY OCCUR	PRODUCT DESCRIPTION	FEMALE DB9F SOLDER CUP CONNECTOR
	1AC08-017	SCALE: NONE	SIZE A	FSCM NO. 43321
			DWG. NO. SD9S	REV. E
			CAD FILE: SD9S.SLDDRW	SHEET 1 OF 1