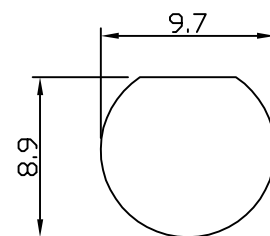
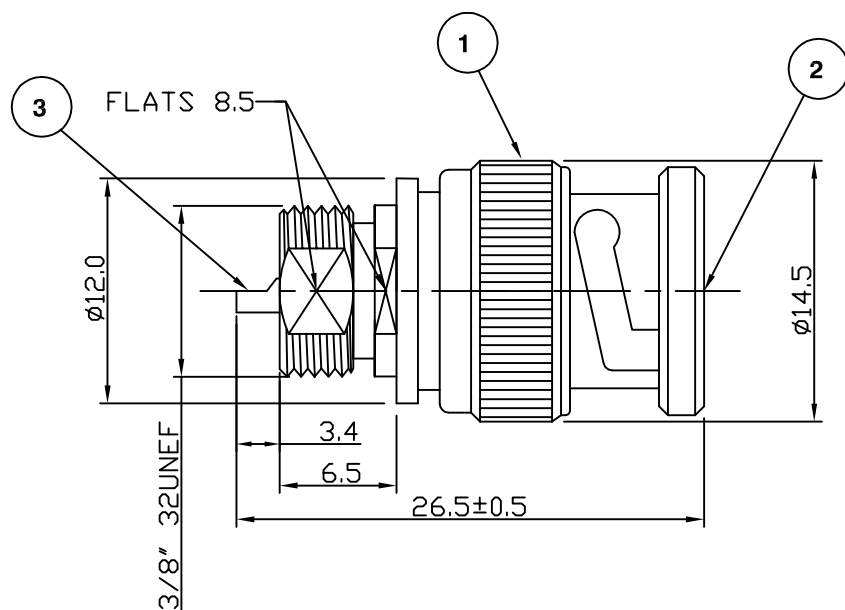
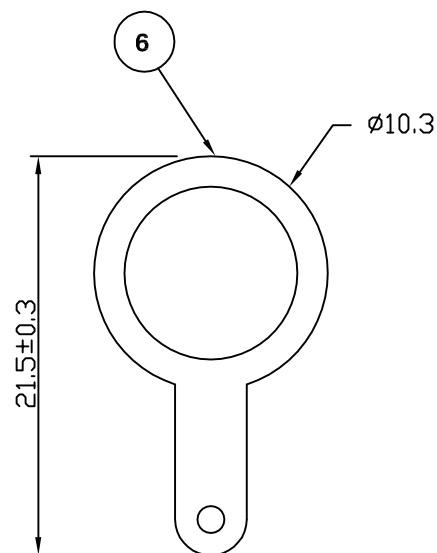
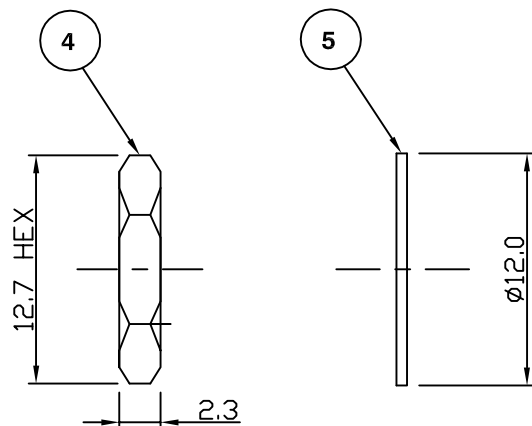


RoHS COMPLIANT



MOUNTING HOLE



Electrical Characteristics

Nominal Impedance:	50 ohms
Frequency Range:	DC to 4 GHz
Insertion Loss:	0.2 dB at 3 GHz
Operating Voltage (rms):	500 V maximum at sea level
Dielectric Withstand Voltage (rms):	1500 V maximum at sea level
Contact Resistance:	1.5 milliohms maximum
Insulation Resistance:	5000 megohms minimum

Mechanical Characteristics

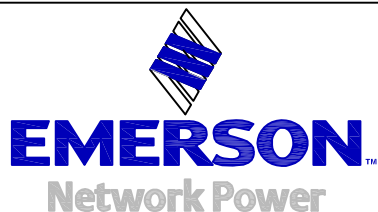
Mating Cycles: 500 cycles minimum
Interface Dimensions: Conform to MIL-C-39012

Environmental Characteristics

Temperature Range: -55 °C to +85 °C

	PART	DESCRIPTION
1	Body	Brass, nickel plated 1.78µm
2	Dielectric	POM
3	Contact	Brass, gold plated 0.08µm to 0.13µm
4	Nut	Brass, nickel plated 1.78µm
5	Washer	Brass, nickel plated 1.78µm
6	Washer	Brass, nickel plated 1.78µm

Added Dimension	JC	4	10 Jan 11
Changed Supplier	MS	3	04 Sep 07
Address changed	JW	2	02 Dec 05
First Issue	SN	1	15 April 02
DESCRIPTION OF REVISION	APPVD	ISS	DATE



Connectivity Solutions
7-13 Russel Way,
Widford Industrial Estate,
Chelmsford, Essex,
CM1 3AA, UK.
Tel: +44 (0) 1245 359515
Fax: +44 (0) 1245 358938

SCALE: Not To Scale	DRAWN BY:	S Nash
DIMENSIONS: mm	CHECKED BY:	S Nash
TOLERANCES: ± 0.2mm unless otherwise stated	APPROVED BY:	G Dalton
	DATE:	15 April 02

TITLE:

BNC Bulkhead Plug

PART NUMBER:

VB2094

PAGE: 1 of 1