

DESIGNED & DIMENSIONED
IN INCHES[MILLIMETERS]

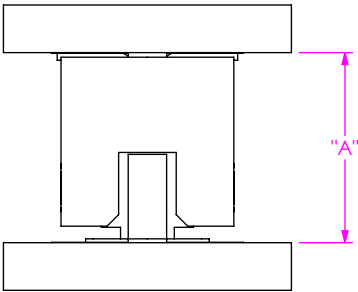


FIG 1
SFM-D-SM MATED WITH TFM-D-SM

TABLE 1					
		SFM-D LEAD STYLE		WIPE	
		-02 / -L2 / -T2			
		"A" FULLY MATED	"A" MAX	FULLY MATED	MIN @ "A" MAX
TFM-D LEAD STYLE	-02	.248 [6.30]	.255 [6.48]	.022 [0.56]	.015 [0.38]
	-12	.318 [8.08]	.333 [8.46]	.030 [0.76]	.015 [0.38]
	-22	.388 [9.86]	.403 [10.24]	.030 [0.76]	.015 [0.38]
	-32	.463 [11.76]	.478 [12.14]	.030 [0.76]	.015 [0.38]

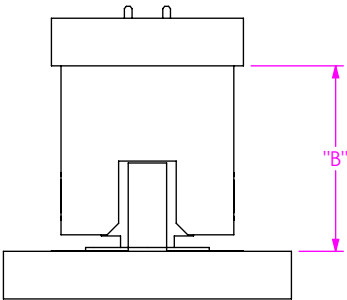


FIG 2
SFM-D-SM MATED WITH TFM-D-TH

TABLE 2					
		SFM-D LEAD STYLE		WIPE	
		-02 / -L2 / -T2			
		"B" FULLY MATED	"B" MAX	FULLY MATED	MIN @ "B" MAX
TFM-D LEAD STYLE	-01	.242 [6.15]	.249 [6.32]	.022 [0.56]	.015 [0.38]
	-03	.242 [6.15]	.257 [6.53]	.030 [0.76]	.015 [0.38]
	-11	.312 [7.92]	.327 [8.31]	.030 [0.76]	.015 [0.38]
	-13	.312 [7.92]	.327 [8.31]	.030 [0.76]	.015 [0.38]
	-21	.382 [9.70]	.397 [10.08]	.030 [0.76]	.015 [0.38]
	-23	.382 [9.70]	.397 [10.08]	.030 [0.76]	.015 [0.38]
	-31	.457 [11.61]	.472 [11.99]	.030 [0.76]	.015 [0.38]

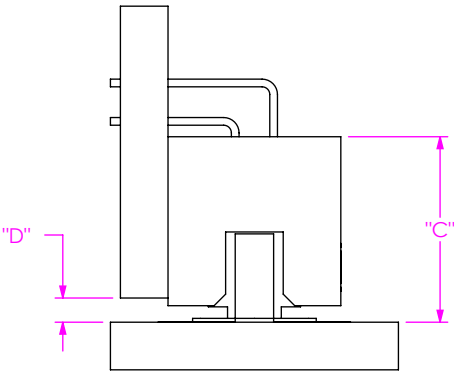


FIG 3
SFM-D-SM MATED WITH TFM-D-RA

TABLE 3							
		SFM-D LEAD STYLE				WIPE	
		-02 / -L2 / -T2					
		"C" FULLY MATED	"C" MAX	"D" FULLY MATED	"D" MAX	FULLY MATED	MIN @ "C" MAX
TFM-D LEAD STYLE	-01-RA	.242 [6.15]	.260 [6.60]	.032 [0.81]	.050 [1.27]	.033 [0.84]	.015 [0.38]

NOTES:

1. ALL DIMENSIONS BASED ON NOMINAL VALUES FOR SAMTEC RECOMMENDED PCB LAYOUTS.
2. ALTHOUGH MAX DIMENSION ARE LISTED SAMTEC RECOMMENDS FULLY MATING COMPONENTS.

c:\enterprisevault\DWG\MISC\MKTG\XFM MATED DOCUMENT-MKT.SLDDRW

PROPRIETARY NOTE
THIS DOCUMENT CONTAINS CONFIDENTIAL AND PROPRIETARY INFORMATION AND ALL DESIGN, MANUFACTURING, REPRODUCTION, USE, PATENT RIGHTS AND SALES RIGHTS ARE EXPRESSLY RESERVED BY SAMTEC, INC. THIS DOCUMENT SHALL NOT BE DISCLOSED, IN WHOLE OR PART, TO ANY UNAUTHORIZED PERSON OR ENTITY NOR REPRODUCED, TRANSFERRED OR INCORPORATED IN ANY OTHER PROJECT IN ANY MANNER WITHOUT THE EXPRESS WRITTEN CONSENT OF SAMTEC, INC.



520 PARK EAST BLVD, NEW ALBANY, IN 47150
PHONE: 812-944-6733 FAX: 812-948-5047
e-Mail: info@SAMTEC.com code: 55322

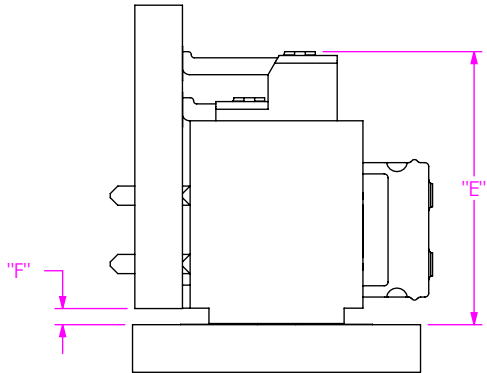


FIG 4
SFM-D-SM MATED WITH TFM-DH

TABLE 4							
		SFM-D LEAD STYLE				WIPE	
		-02 / -L2 / -T2					
		"E" FULLY MATED	"E" MAX	"F" FULLY MATED	"F" MAX	FULLY MATED	MIN @ "E" MAX
TFM-D LEAD STYLE	-02-DH	.356 [9.04]	.382 [9.70]	.021 [0.53]	.047 [1.19]	.041 [1.04]	.015 [0.38]

WHEN MATING TFM-DH WITH SFM-D, -A OPTION MUST BE SELECTED

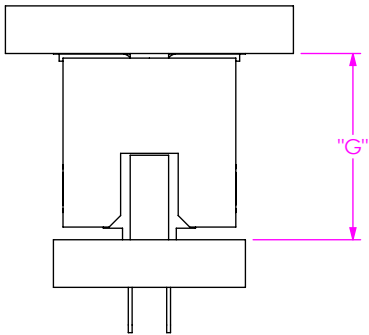


FIG 5
SFM-D-TH MATED WITH TFM-D-SM

TABLE 5					
		SFM-D LEAD STYLE		WIPE	
		-01 / -03 / -L1 / -L3 / -T1			
		"G" FULLY MATED	"G" MAX	FULLY MATED	MIN @ "G" MAX
TFM-D LEAD STYLE	-02	.243 [6.17]	.250 [6.35]	.022 [0.56]	.015 [0.38]
	-12	.313 [7.95]	.328 [8.33]	.030 [0.76]	.015 [0.38]
	-22	.383 [9.73]	.398 [10.11]	.030 [0.76]	.015 [0.38]
	-32	.458 [11.63]	.473 [12.01]	.030 [0.76]	.015 [0.38]

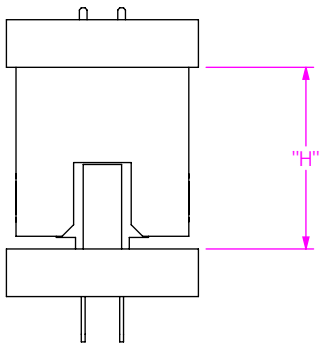


FIG 6
SFM-D-TH MATED WITH TFM-D-TH

TABLE 6					
		SFM-D LEAD STYLE		WIPE	
		-01 / -03 / -L1 / -L3 / -T1			
		"H" FULLY MATED	"H" MAX	FULLY MATED	MIN @ "H" MAX
TFM-D LEAD STYLE	-01	.237 [6.02]	.244 [6.20]	.022 [0.56]	.015 [0.38]
	-03	.237 [6.02]	.252 [6.40]	.030 [0.76]	.015 [0.38]
	-11	.307 [7.80]	.322 [8.18]	.030 [0.76]	.015 [0.38]
	-13	.307 [7.80]	.322 [8.18]	.030 [0.76]	.015 [0.38]
	-21	.377 [9.58]	.392 [9.96]	.030 [0.76]	.015 [0.38]
	-23	.377 [9.58]	.392 [9.96]	.030 [0.76]	.015 [0.38]
	-31	.452 [11.48]	.467 [11.86]	.030 [0.76]	.015 [0.38]

PROPRIETARY NOTE
THIS DOCUMENT CONTAINS CONFIDENTIAL AND PROPRIETARY INFORMATION AND ALL DESIGN, MANUFACTURING, REPRODUCTION, USE, PATENT RIGHTS AND SALES RIGHTS ARE EXPRESSLY RESERVED BY SAMTEC, INC. THIS DOCUMENT SHALL NOT BE DISCLOSED, IN WHOLE OR PART, TO ANY UNAUTHORIZED PERSON OR ENTITY NOR REPRODUCED, TRANSFERRED OR INCORPORATED IN ANY OTHER PROJECT IN ANY MANNER WITHOUT THE EXPRESS WRITTEN CONSENT OF SAMTEC, INC.

samtec

520 PARK EAST BLVD, NEW ALBANY, IN 47150
PHONE: 812-944-6733 FAX: 812-948-5047
e-Mail: info@SAMTEC.com code: 55322

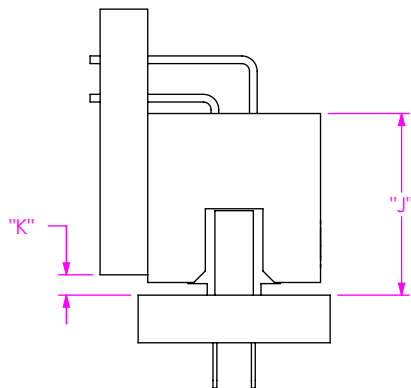


FIG 7
SFM-D-TH MATED WITH TFM-D-RA

TABLE 7							
		SFM-D LEAD STYLE				WIPE	
		-01 / -03 / -L1 / -L3 / -T1					
		"J" FULLY MATED	"J" MAX	"K" FULLY MATED	"K" MAX	FULLY MATED	MIN @ "J" MAX
TFM-D LEAD STYLE	-01-RA	.237 [6.02]	.255 [6.48]	.027 [0.67]	.045 [1.13]	.033 [0.84]	.015 [0.38]

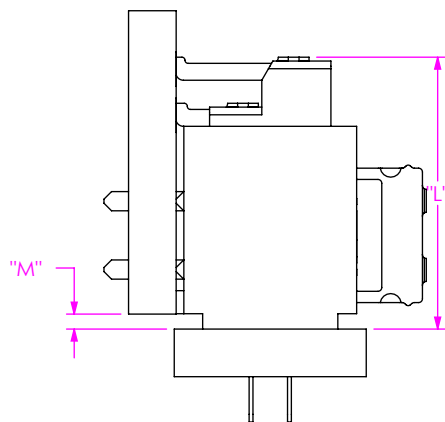


FIG 8
SFM-D-TH MATED WITH TFM-DH

TABLE 8							
		SFM-D LEAD STYLE				WIPE	
		-01 / -03 / -L1 / -L3 / -T1					
		"L" FULLY MATED	"L" MAX	"M" FULLY MATED	"M" MAX	FULLY MATED	MIN @ "L" MAX
TFM-D LEAD STYLE	-02-DH	.354 [8.99]	.377 [9.58]	.020 [0.51]	.043 [1.09]	.038 [0.97]	.015 [0.38]

WHEN MATING TFM-DH WITH SFM-D, -A OPTION MUST BE SELECTED

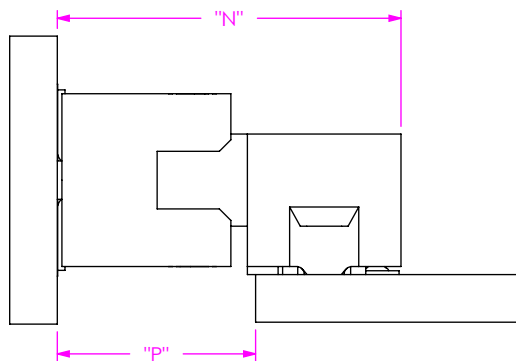


FIG 9
SFM-DH MATED WITH TFM-D-SM

TABLE 9							
		SFM-D LEAD STYLE				WIPE	
		-02-DH					
		"N" FULLY MATED	"N" MAX	"P" FULLY MATED	"P" MAX	FULLY MATED	MIN @ "N" MAX
TFM-D LEAD STYLE	-02	.448 [11.38]	.455 [11.56]	.258 [6.55]	.265 [6.73]	.022 [0.56]	.015 [0.38]
	-12	.518 [13.16]	.533 [13.54]	.328 [8.33]	.343 [8.71]	.030 [0.76]	.015 [0.38]
	-22	.588 [14.94]	.603 [15.32]	.398 [10.11]	.413 [10.49]	.030 [0.76]	.015 [0.38]
	-32	.663 [16.84]	.678 [17.22]	.473 [12.01]	.488 [12.40]	.030 [0.76]	.015 [0.38]

PROPRIETARY NOTE
THIS DOCUMENT CONTAINS CONFIDENTIAL AND
PROPRIETARY INFORMATION AND ALL DESIGN,
MANUFACTURING, REPRODUCTION, USE, PATENT RIGHTS
AND SALES RIGHTS ARE EXPRESSLY RESERVED BY SAMTEC,
INC. THIS DOCUMENT SHALL NOT BE DISCLOSED, IN WHOLE
OR PART, TO ANY UNAUTHORIZED PERSON OR ENTITY NOR
REPRODUCED, TRANSFERRED OR INCORPORATED IN ANY
OTHER PROJECT IN ANY MANNER WITHOUT THE EXPRESS
WRITTEN CONSENT OF SAMTEC, INC.

samtec

520 PARK EAST BLVD, NEW ALBANY, IN 47150
PHONE: 812-944-6733 FAX: 812-948-5047
e-Mail: info@SAMTEC.com code: 55322

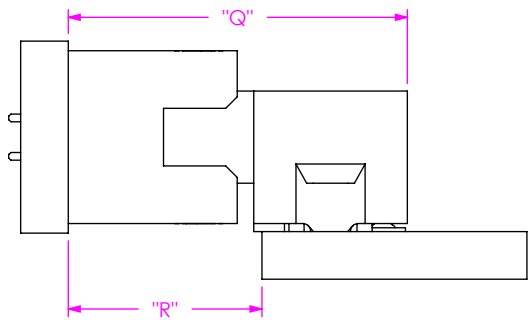


FIG 10
SFM-DH MATED WITH TFM-D-TH

TABLE 10							
		SFM-D LEAD STYLE				WIPE	
		-02-DH					
		"Q" FULLY MATED	"Q" MAX	"R" FULLY MATED	"R" MAX	FULLY MATED	MIN @ "Q" MAX
TFM-D LEAD STYLE	-01	.442 [11.23]	.449 [11.40]	.252 [6.40]	.259 [6.58]	.022 [0.56]	.015 [0.38]
	-03	.442 [11.23]	.457 [11.61]	.252 [6.40]	.267 [6.78]	.030 [0.76]	.015 [0.38]
	-11	.512 [13.00]	.527 [13.39]	.322 [8.18]	.337 [8.56]	.030 [0.76]	.015 [0.38]
	-13	.512 [13.00]	.527 [13.39]	.322 [8.18]	.337 [8.56]	.030 [0.76]	.015 [0.38]
	-21	.582 [14.78]	.597 [15.16]	.392 [9.96]	.407 [10.34]	.030 [0.76]	.015 [0.38]
	-23	.582 [14.78]	.597 [15.16]	.392 [9.96]	.407 [10.34]	.030 [0.76]	.015 [0.38]
	-31	.657 [16.69]	.672 [17.07]	.467 [11.86]	.482 [12.24]	.030 [0.76]	.015 [0.38]

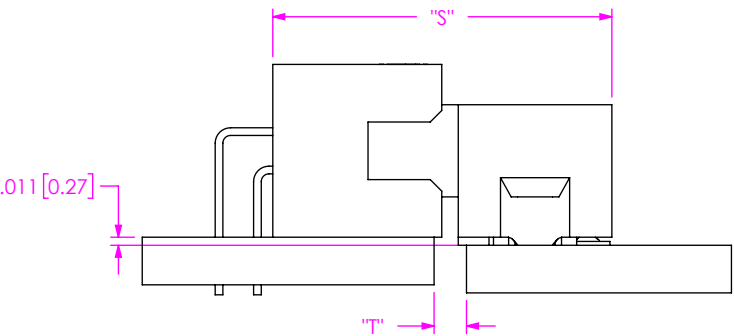


FIG 11
SFM-DH MATED WITH TFM-D-RA

TABLE 11							
		SFM-D LEAD STYLE				WIPE	
		-02-DH					
		"S" FULLY MATED	"S" MAX	"T" FULLY MATED	"T" MAX	FULLY MATED	MIN @ "S" MAX
TFM-D LEAD STYLE	-01-RA	.442 [11.23]	.460 [11.68]	.042 [1.07]	.060 [1.52]	.033 [0.84]	.015 [0.38]

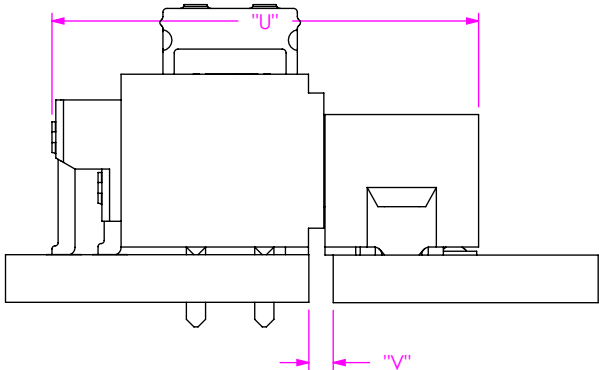


FIG 12
SFM-DH MATED WITH TFM-DH

TABLE 12							
		SFM-D LEAD STYLE				WIPE	
		-02-DH					
		"U" FULLY MATED	"U" MAX	"V" FULLY MATED	"V" MAX	FULLY MATED	MIN @ "U" MAX
TFM-D LEAD STYLE	-02-DH	.556 [14.12]	.582 [14.78]	.032 [0.81]	.058 [1.47]	.041 [1.04]	.015 [0.38]

PROPRIETARY NOTE
THIS DOCUMENT CONTAINS CONFIDENTIAL AND PROPRIETARY INFORMATION AND ALL DESIGN, MANUFACTURING, REPRODUCTION, USE, PATENT RIGHTS AND SALES RIGHTS ARE EXPRESSLY RESERVED BY SAMTEC, INC. THIS DOCUMENT SHALL NOT BE DISCLOSED, IN WHOLE OR PART, TO ANY UNAUTHORIZED PERSON OR ENTITY NOR REPRODUCED, TRANSFERRED OR INCORPORATED IN ANY OTHER PROJECT IN ANY MANNER WITHOUT THE EXPRESS WRITTEN CONSENT OF SAMTEC, INC.



520 PARK EAST BLVD, NEW ALBANY, IN 47150
PHONE: 812-944-6733 FAX: 812-948-5047
e-Mail: info@SAMTEC.com code: 55322

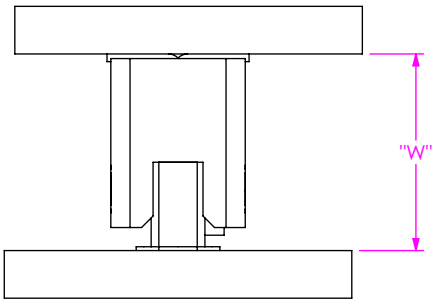


FIG 13
SFM-S-SM MATED WITH TFM-S-SM

TABLE 13					
		SFM-S LEAD STYLE		WIPE	
		-02 / -L2 / -T2			
		"W" FULLY MATED	"W" MAX	FULLY MATED	MIN @ "W" MAX
TFM-S LEAD STYLE	-02	.256 [6.50]	.256 [6.50]	.015 [0.38]	.015 [0.38]

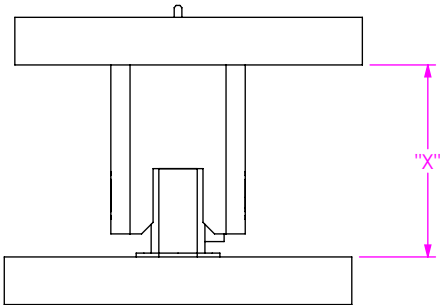


FIG 14
SFM-S-SM MATED WITH TFM-S-TH

TABLE 14					
		SFM-S LEAD STYLE		WIPE	
		-02 / -L2 / -T2			
		"X" FULLY MATED	"X" MAX	FULLY MATED	MIN @ "X" MAX
TFM-S LEAD STYLE	-01	.250 [6.35]	.250 [6.35]	.015 [0.38]	.015 [0.38]
	-03	.250 [6.35]	.257 [6.53]	.022 [0.56]	.015 [0.38]

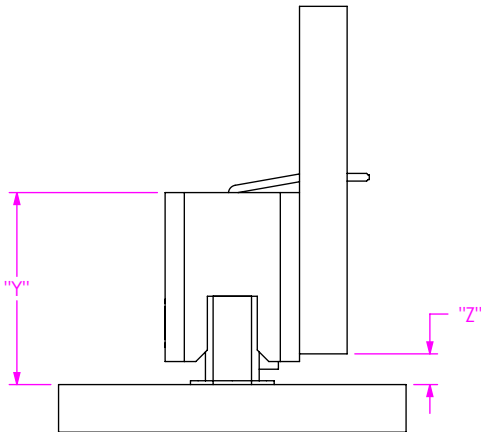


FIG 15
SFM-S-SM MATED WITH TFM-S-RA

TABLE 15							
		SFM-S LEAD STYLE				WIPE	
		-02 / -L2 / -T2					
		"Y" FULLY MATED	"Y" MAX	"Z" FULLY MATED	"Z" MAX	FULLY MATED	MIN @ "Y" MAX
TFM-S LEAD STYLE	-01-RA	.250 [6.35]	.254 [6.45]	.040 [1.02]	.044 [1.12]	.019 [0.48]	.015 [0.38]

PROPRIETARY NOTE
THIS DOCUMENT CONTAINS CONFIDENTIAL AND PROPRIETARY INFORMATION AND ALL DESIGN, MANUFACTURING, REPRODUCTION, USE, PATENT RIGHTS AND SALES RIGHTS ARE EXPRESSLY RESERVED BY SAMTEC, INC. THIS DOCUMENT SHALL NOT BE DISCLOSED, IN WHOLE OR PART, TO ANY UNAUTHORIZED PERSON OR ENTITY NOR REPRODUCED, TRANSFERRED OR INCORPORATED IN ANY OTHER PROJECT IN ANY MANNER WITHOUT THE EXPRESS WRITTEN CONSENT OF SAMTEC, INC.



520 PARK EAST BLVD, NEW ALBANY, IN 47150
PHONE: 812-944-6733 FAX: 812-948-5047
e-Mail: info@SAMTEC.com code: 55322

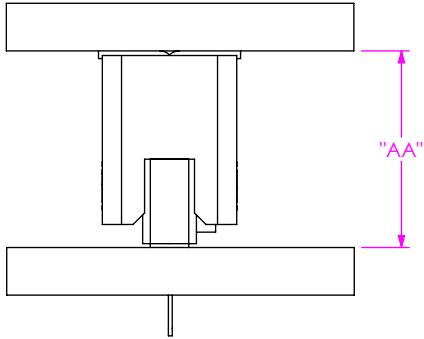


FIG 16
SFM-S-TH MATED WITH TFM-S-SM

TABLE 16					
		SFM-S LEAD STYLE		WIPE	
		-01 / -03 / -L1 / -L3 / -T1			
		"AA" FULLY MATED	"AA" MAX	FULLY MATED	MIN @ "AA" MAX
TFM-S LEAD STYLE	-02	.256 [6.50]	.256 [6.50]	.015 [0.38]	.015 [0.38]

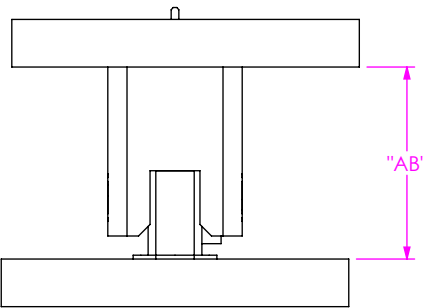


FIG 17
SFM-S-TH MATED WITH TFM-S-TH

TABLE 17					
		SFM-S LEAD STYLE		WIPE	
		-01 / -03 / -L1 / -L3 / -T1			
		"AB" FULLY MATED	"AB" MAX	FULLY MATED	MIN @ "AB" MAX
TFM-S LEAD STYLE	-01	.250 [6.35]	.250 [6.35]	.015 [0.38]	.015 [0.38]
	-03	.250 [6.35]	.257 [6.53]	.022 [0.56]	.015 [0.38]

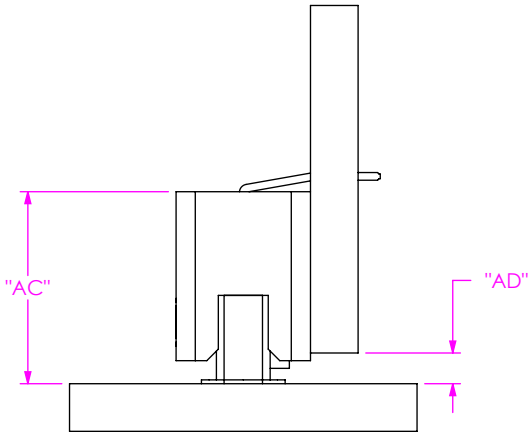


FIG 18
SFM-S-TH MATED WITH TFM-S-RA

TABLE 18							
		SFM-S LEAD STYLE				WIPE	
		-01 / -03 / -L1 / -L3 / -T1					
		"AC" FULLY MATED	"AC" MAX	"AD" FULLY MATED	"AD" MAX	FULLY MATED	MIN @ "AC" MAX
TFM-S LEAD STYLE	-01-RA	.250 [6.35]	.254 [6.45]	.040 [1.02]	.044 [1.12]	.019 [0.48]	.015 [0.38]

PROPRIETARY NOTE
THIS DOCUMENT CONTAINS CONFIDENTIAL AND PROPRIETARY INFORMATION AND ALL DESIGN, MANUFACTURING, REPRODUCTION, USE, PATENT RIGHTS AND SALES RIGHTS ARE EXPRESSLY RESERVED BY SAMTEC, INC. THIS DOCUMENT SHALL NOT BE DISCLOSED, IN WHOLE OR PART, TO ANY UNAUTHORIZED PERSON OR ENTITY NOR REPRODUCED, TRANSFERRED OR INCORPORATED IN ANY OTHER PROJECT IN ANY MANNER WITHOUT THE EXPRESS WRITTEN CONSENT OF SAMTEC, INC.



520 PARK EAST BLVD, NEW ALBANY, IN 47150
PHONE: 812-944-6733 FAX: 812-948-5047
e-Mail: info@SAMTEC.com code: 55322

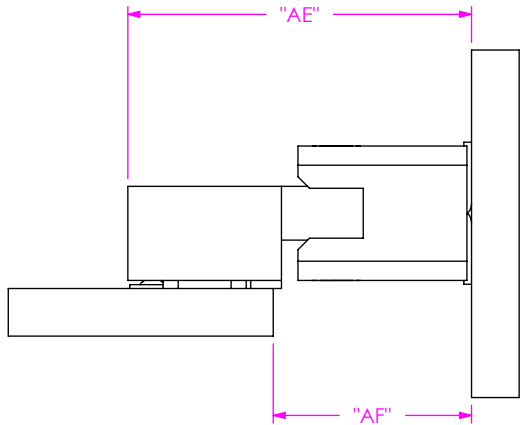


FIG 19
SFM-SH MATED WITH TFM-S-SM

TABLE 19							
		SFM-S LEAD STYLE				WIPE	
		-02-SH					
		"AE" FULLY MATED	"AE" MAX	"AF" FULLY MATED	"AF" MAX	FULLY MATED	MIN @ "AE" MAX
TFM-S LEAD STYLE	-02	.448 [11.38]	.455 [11.56]	.258 [6.55]	.265 [6.73]	.022 [0.56]	.015 [0.38]

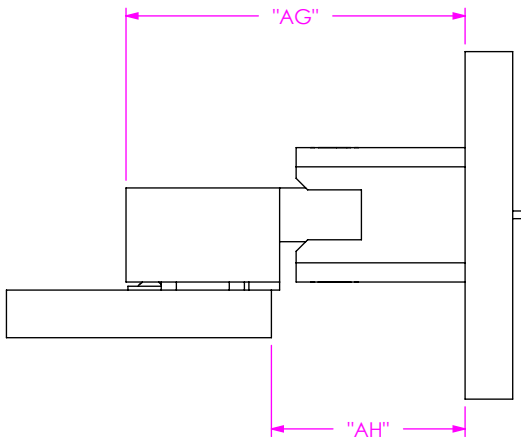


FIG 20
SFM-SH MATED WITH TFM-S-TH

TABLE 20							
		SFM-S LEAD STYLE				WIPE	
		-02-SH					
		"AG" FULLY MATED	"AG" MAX	"AH" FULLY MATED	"AH" MAX	FULLY MATED	MIN @ "AG" MAX
TFM-S LEAD STYLE	-01	.442 [11.23]	.449 [11.40]	.252 [6.40]	.259 [6.58]	.022 [0.56]	.015 [0.38]
	-03	.442 [11.23]	.457 [11.61]	.252 [6.40]	.267 [6.78]	.030 [0.76]	.015 [0.38]

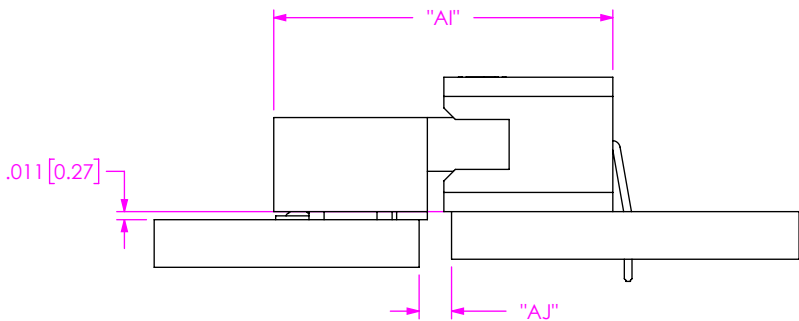


FIG 21
SFM-SH MATED WITH TFM-S-RA

TABLE 21							
		SFM-S LEAD STYLE				WIPE	
		-02-SH					
		"AI" FULLY MATED	"AI" MAX	"AJ" FULLY MATED	"AJ" MAX	FULLY MATED	MIN @ "AI" MAX
TFM-S LEAD STYLE	-01-RA	.442 [11.23]	.455 [11.56]	.042 [1.07]	.055 [1.40]	.028 [0.71]	.015 [0.38]

PROPRIETARY NOTE
THIS DOCUMENT CONTAINS CONFIDENTIAL AND
PROPRIETARY INFORMATION AND ALL DESIGN,
MANUFACTURING, REPRODUCTION, USE, PATENT RIGHTS
AND SALES RIGHTS ARE EXPRESSLY RESERVED BY SAMTEC,
INC. THIS DOCUMENT SHALL NOT BE DISCLOSED, IN WHOLE
OR PART, TO ANY UNAUTHORIZED PERSON OR ENTITY NOR
REPRODUCED, TRANSFERRED OR INCORPORATED IN ANY
OTHER PROJECT IN ANY MANNER WITHOUT THE EXPRESS
WRITTEN CONSENT OF SAMTEC, INC.

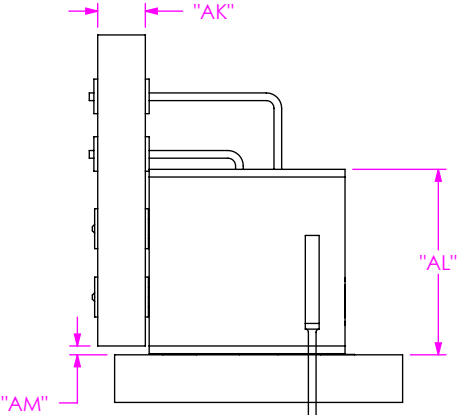


FIG 22
SFM-D-SM MATED WITH TFM-D-REX

TABLE 22								
			SFM-D LEAD STYLE				WIPE	
			-02 / -L2 / -T2					
			"AK"	"AL" FULLY MATED	"AL" MAX	"AM" FULLY MATED	"AM" MAX	FULLY MATED
TFM-D LEAD STYLE	-01-RE1	.062 [1.57]	.242 [6.13]	.257 [6.52]	.012 [0.29]	.027 [0.67]	.030 [0.76]	.015 [0.38]
	-01-RE2	.093 [2.36]	.242 [6.13]	.257 [6.52]	.012 [0.29]	.027 [0.67]	.030 [0.76]	.015 [0.38]

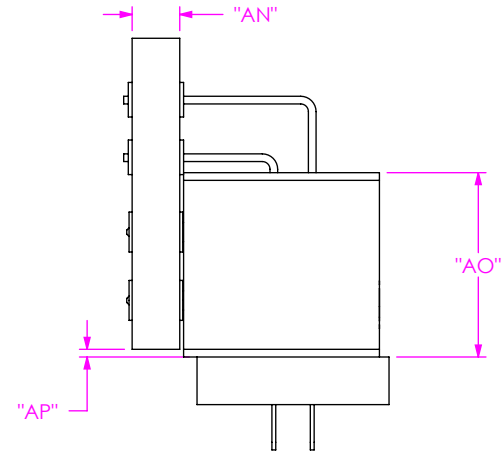


FIG 23
SFM-D-TH MATED WITH TFM-D-REX

TABLE 23								
			SFM-D LEAD STYLE				WIPE	
			-01 / -03 -L1 / -L3 / -T1					
		"AN"	"AO" FULLY MATED	"AO" MAX	"AP" FULLY MATED	"AP" MAX	FULLY MATED	MIN @ "AO" MAX
TFM-D LEAD STYLE	-01-RE1	.062 [1.57]	.240 [6.10]	.251 [6.38]	.010 [0.25]	.021 [0.53]	.026 [0.66]	.015 [0.38]
	-01-RE2	.093 [2.36]	.240 [6.10]	.251 [6.38]	.010 [0.25]	.021 [0.53]	.026 [0.66]	.015 [0.38]

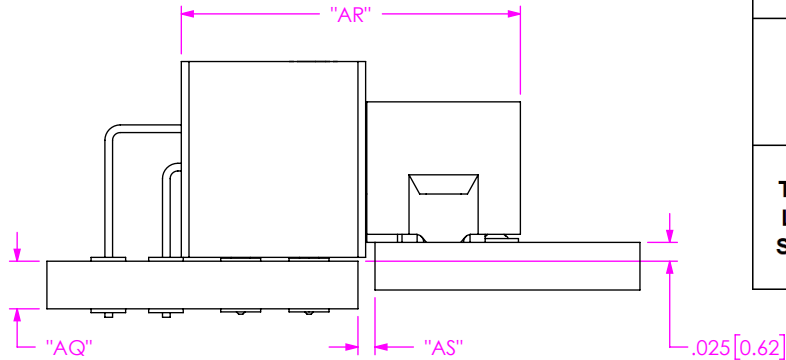


FIG 24
SFM-D-DH MATED WITH TFM-D-REX

TABLE 24								
			SFM-D LEAD STYLE				WIPE	
			-02-DH					
			"AQ"	"AR" FULLY MATED	"AR" MAX	"AS" FULLY MATED		
TFM-D LEAD STYLE	-01-RE1	.062 [1.57]	.442 [11.23]	.457 [11.61]	.022 [0.56]	.037 [0.94]	.030 [0.76]	.015 [0.38]
	-01-RE2	.093 [2.36]	.442 [11.23]	.457 [11.61]	.022 [0.56]	.037 [0.94]	.030 [0.76]	.015 [0.38]

PROPRIETARY NOTE
THIS DOCUMENT CONTAINS CONFIDENTIAL AND PROPRIETARY INFORMATION AND ALL DESIGN, MANUFACTURING, REPRODUCTION, USE, PATENT RIGHTS AND SALES RIGHTS ARE EXPRESSLY RESERVED BY SAMTEC, INC. THIS DOCUMENT SHALL NOT BE DISCLOSED, IN WHOLE OR PART, TO ANY UNAUTHORIZED PERSON OR ENTITY NOR REPRODUCED, TRANSFERRED OR INCORPORATED IN ANY OTHER PROJECT IN ANY MANNER WITHOUT THE EXPRESS WRITTEN CONSENT OF SAMTEC, INC.



520 PARK EAST BLVD, NEW ALBANY, IN 47150
PHONE: 812-944-6733 FAX: 812-948-5047
e-Mail: info@SAMTEC.com code: 55322