

5

4

3

2

1

Description: D-Sub Hood, Plastic, H andh HS Series, 15 Pins
Part No: 40-9715H,HS
(40-9715-HS is the same as 40-9715-H, but with metalized plating)

DRAWING NO.
40-9715H,HS-CUST

REVISIONS

01

OFFICIAL RELEASE

12-19-12

G

Z

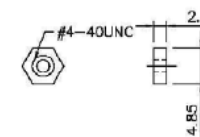
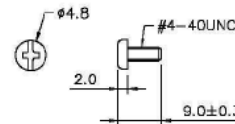
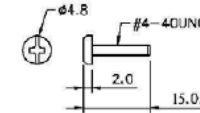
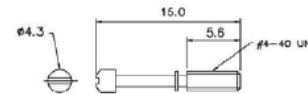
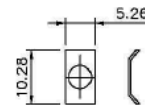
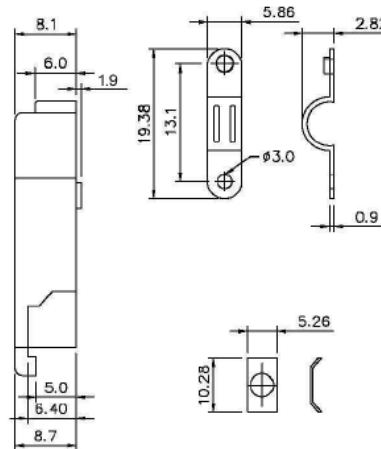
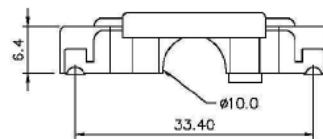
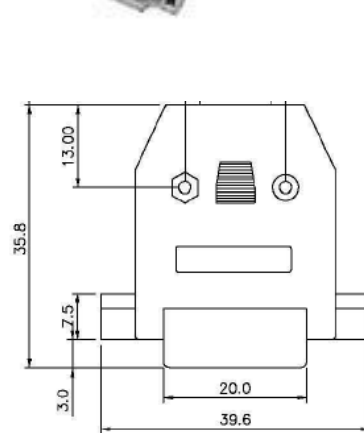
M

W

M

L

ECO-12-0335

**DIM OUTLINE**

Hood Material: ABS,UL 94HB
Color: Gray,Black,Ivory
Screw Nut &Clip And Other ,Nickel Plated
Plated:1Set/Bag

TOLERANCE UNLESS OTHERWISE SPECIFIED		DRAWN BY	DATE
DECIMALS		GARY.ZHG	12-19-12
mm		CHECKED BY	DATE
X.X		MONICA.W	12-19-12
X.XX		APPROVED BY	DATE
X.XXX		MA LIN	12-19-12
ANGLES		U/M	mm
± 0.5°			

THIS DRAWING WAS PRODUCED BY COMPUTER,
DO NOT SCALE DRAWING OR UPDATE MANUALLY.

 EMERSON Network Power		Connectivity Solutions	
TITLE			
D-Sub Hood, Plastic, H Series, 15 Pins D-Sub Hood, Deluxe Metalized HS Series, 15 Pins			
SHEET	DRAWING NO.		SIZE
1 OF 1	40-9715H,HS-CUST		A

5

4

3

2

1